

31572 INDUSTRIAL ROAD
LIVONIA, MICHIGAN

HI-TECH FOR LEASE
6,150 – 22,704 Square Feet Available



**SIGNATURE
ASSOCIATES**
KNOW SIGNATURE | KNOW RESULTS

LIVONIA EXECUTIVE CENTER



PROPERTY FEATURES

- 6,150 – 22,704 square feet available
- Move in ready office / hi-tech suites
- Access to shared loading dock and truckwell
- Great window line creates bright office areas
- 17' clear height in warehouse areas
- Nice park like setting
- Updated monument signage
- Lease Rate: \$9.95/sq.ft. NNN



For more information, please contact:

JASON STOUGH
(248) 948 4180
jstough@signatureassociates.com

CHRISTOPHER D'ANGELO
(248) 948 0109
cdangelo@signatureassociates.com

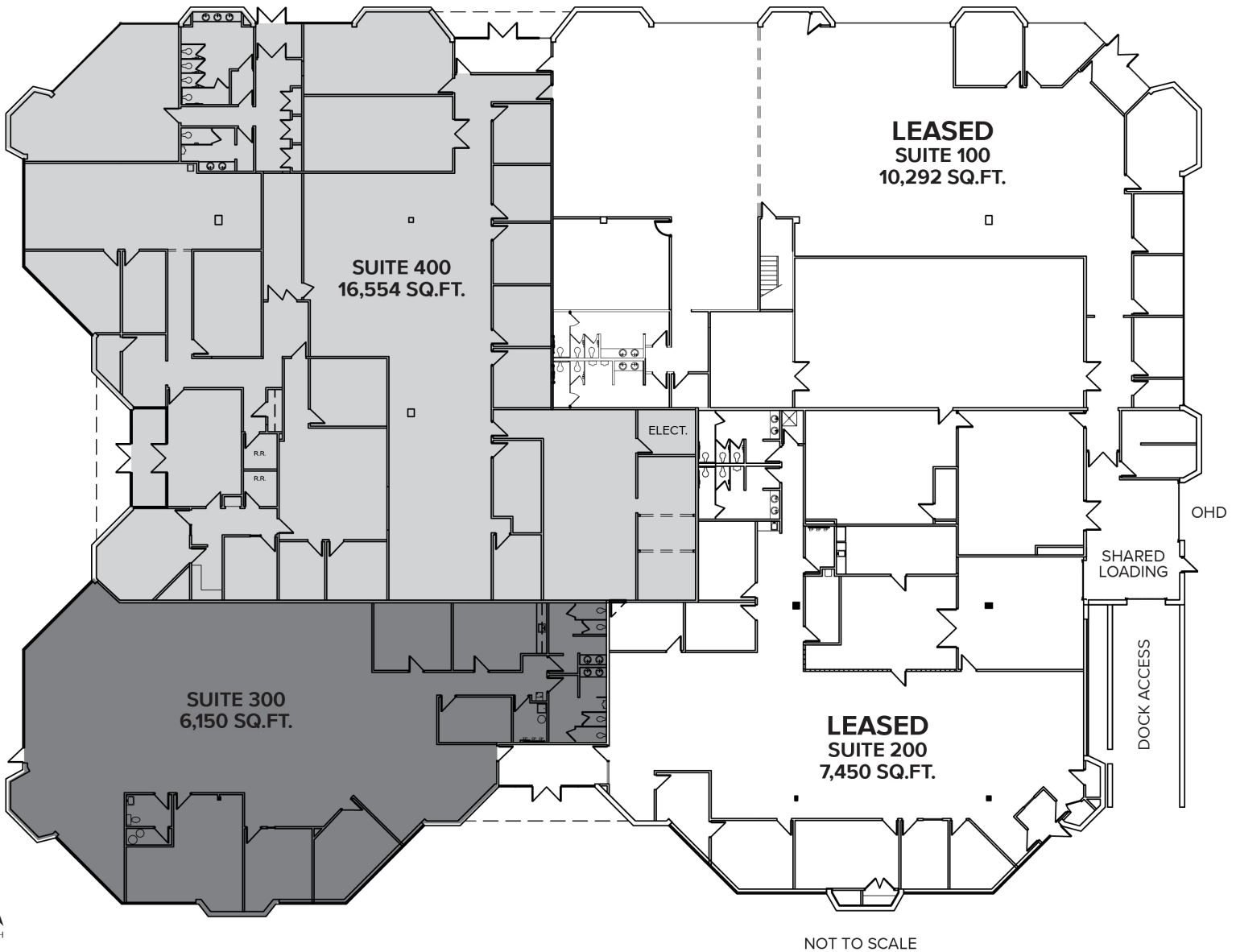
SIGNATURE ASSOCIATES
One Towne Square, Suite 1200
Southfield, MI 48076
www.signatureassociates.com

31572 Industrial Road – Livonia, Michigan

Hi-Tech For Lease

6,150 – 22,704
Square Feet
AVAILABLE

Floor Plan



For more information, please contact:

JASON STOUGH
(248) 948 4180
jstough@signatureassociates.com

CHRISTOPHER D'ANGELO
(248) 948 0109
cdangelo@signatureassociates.com

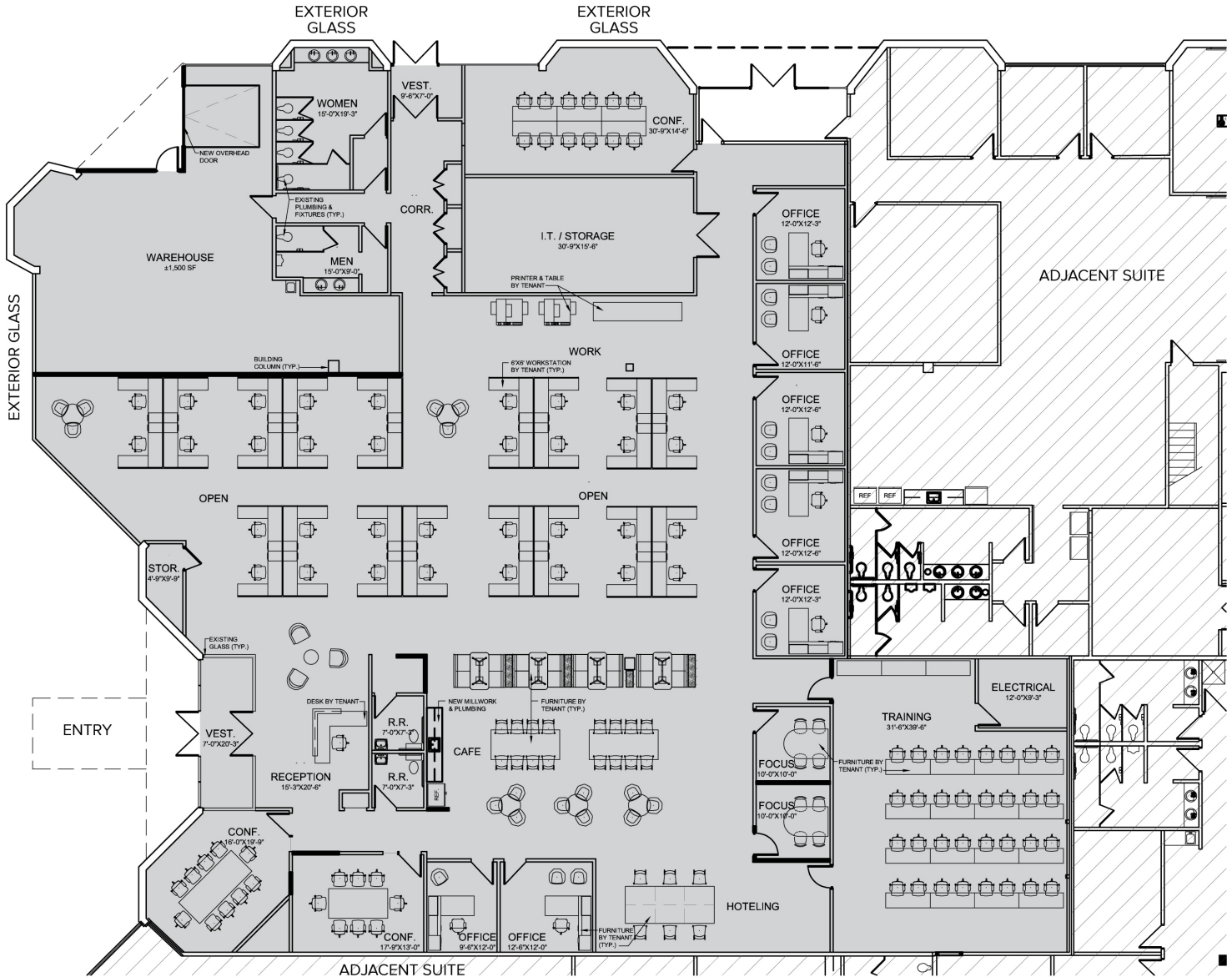
SIGNATURE ASSOCIATES
One Towne Square, Suite 1200
Southfield, MI 48076
www.signatureassociates.com

31572 Industrial Road – Livonia, Michigan

Hi-Tech For Lease

6,150 – 22,704
Square Feet
AVAILABLE

Conceptual Floor Plan Suite 400 – 16,554 SF



For more information, please contact:

JASON STOUGH
(248) 948 4180
jstough@signatureassociates.com

CHRISTOPHER D'ANGELO
(248) 948 0109
cdangelo@signatureassociates.com

SIGNATURE ASSOCIATES
One Towne Square, Suite 1200
Southfield, MI 48076
www.signatureassociates.com

31572 Industrial Road – Livonia, Michigan

Hi-Tech For Lease

6,150 – 22,704
Square Feet
AVAILABLE

Conceptual Floor Plan
Suite 400 – 16,554 SF



For more information, please contact:

JASON STOUGH
(248) 948 4180
jstough@signatureassociates.com

CHRISTOPHER D'ANGELO
(248) 948 0109
cdangelo@signatureassociates.com

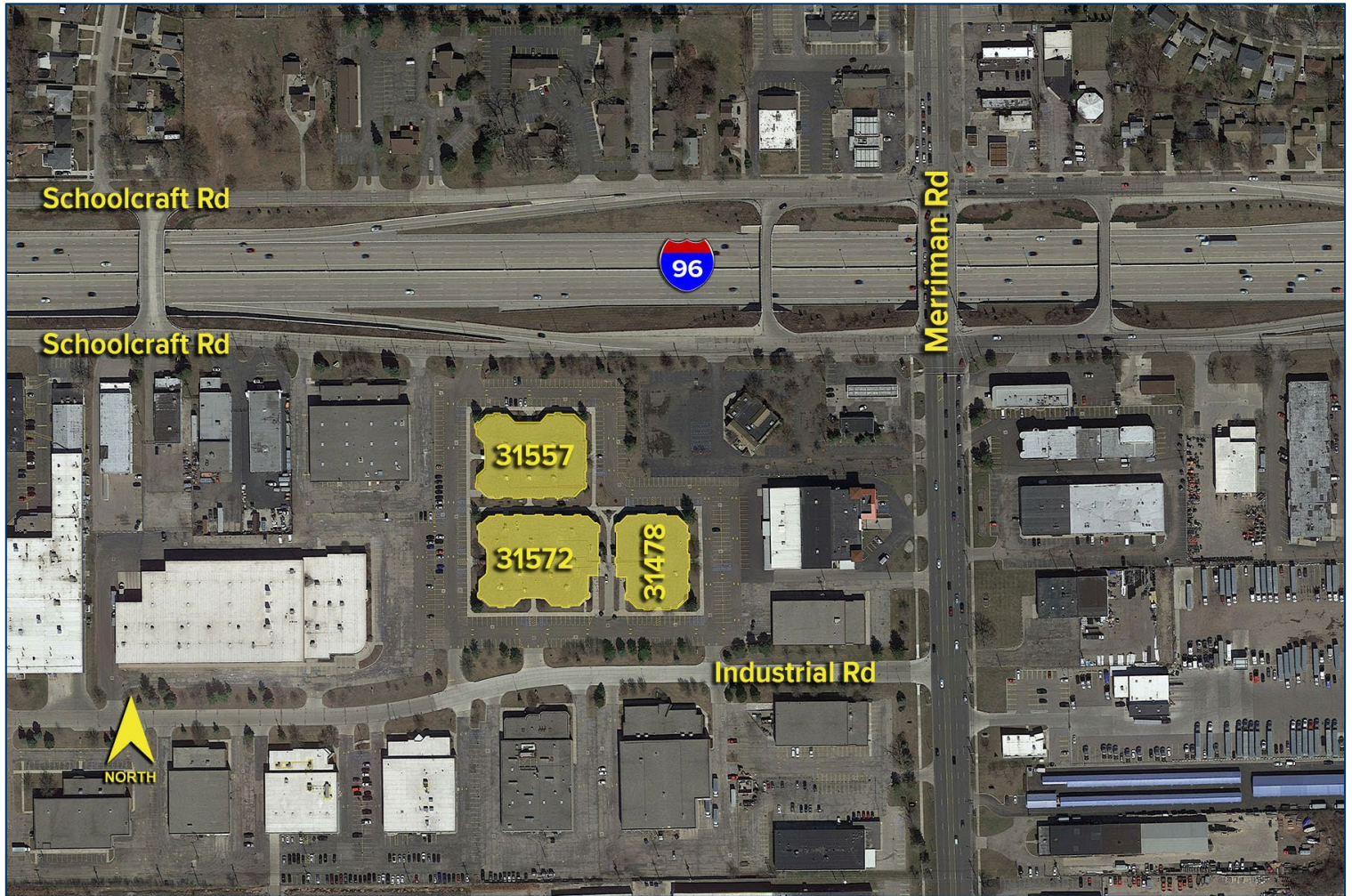
SIGNATURE ASSOCIATES
One Towne Square, Suite 1200
Southfield, MI 48076
www.signatureassociates.com

31572 Industrial Road – Livonia, Michigan

Hi-Tech For Lease

6,150 – 22,704
Square Feet
AVAILABLE

Aerial



For more information, please contact:

JASON STOUGH
(248) 948 4180
jstough@signatureassociates.com

CHRISTOPHER D'ANGELO
(248) 948 0109
cdangelo@signatureassociates.com

SIGNATURE ASSOCIATES
One Towne Square, Suite 1200
Southfield, MI 48076
www.signatureassociates.com