

3,072 sq ft MAYFAIR OFFICES TO LET

THIRD FLOOR, 58 DAVIES STREET, LONDON W1



LOCATION

Occupying a prominent position at the northern end of Davies Street at the apex of Davies Street and South Molton Lane, 58 Davies Street is on the doorstep of Oxford Street, Bond Street and South Molton Street, Bond Street Underground and the Elizabeth Line Crossrail (expected to operate from late 2019) stations. It is therefore well-located for transport, retail, restaurant and leisure amenities.

DESCRIPTION

The available accommodation comprises the majority of the Third Floor providing a total area of about 3,072 sq ft (285.4 sq m). The suite overlooks both Davies Street and South Molton Lane and has excellent natural light.

AMENITIES

- Air-conditioning
- 24-hour access
- 8 person passenger lift
- Dedicated shower/WC
- Excellent natural light
- Open plan layout

LEASE

A new lease is available for a term to be agreed.

COSTS

Rent	£67.50 per sq ft (offices)
	£15.00 per sq ft (storage)
Rates*	TBC (estimated £25.00 per sq ft)
Service Charge	Estimated £10.00 per sq ft

* Interested parties are advised to make their own investigations.

For further information please contact:

John Buckingham T: 020 7493 7856 M: 07836 534504



E: john.buckingham@unionland.co.uk

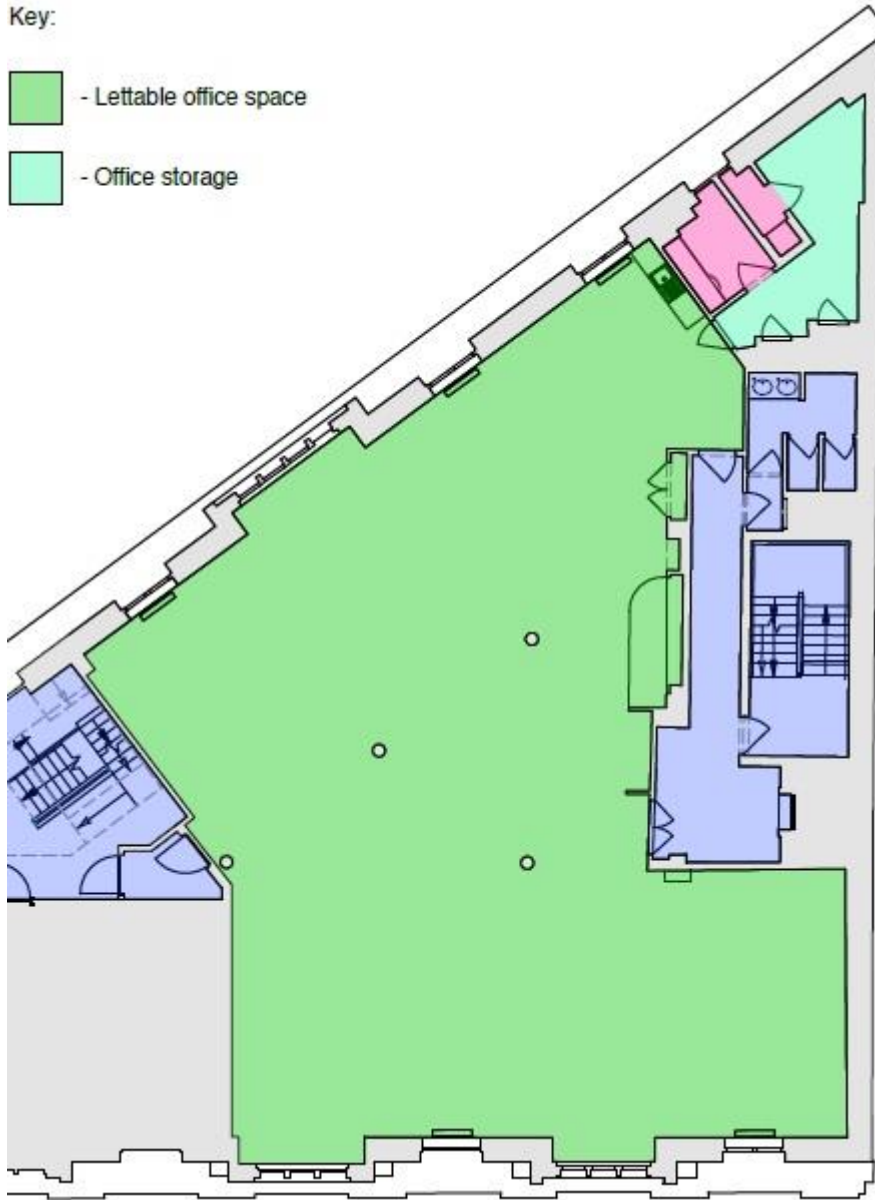
Or our joint agent:

Cushman & Wakefield

M: 07912 977980 / 07885 201163

Key:

-  - Lettable office space
-  - Office storage



DRAWING PREPARED BY WILKINSON KING ARCHITECTS

UNION
15 Dover Street
London
W1S 4LP

020 7493 7856