

truecre.com



The answer is always TRUE.

EXCLUSIVE AGENT:
Richard Schnider | 203.762.6173 | rs@truecre.com

FOR LEASE

FOOD | DRIVE-THRU OPPORTUNITY

1563 WEST MAIN ST. WILLIMANTIC CT 06226

1,200± SF



APPROVED FOOD USE & DRIVE-THRU!

CALL FOR MORE
DETAILS

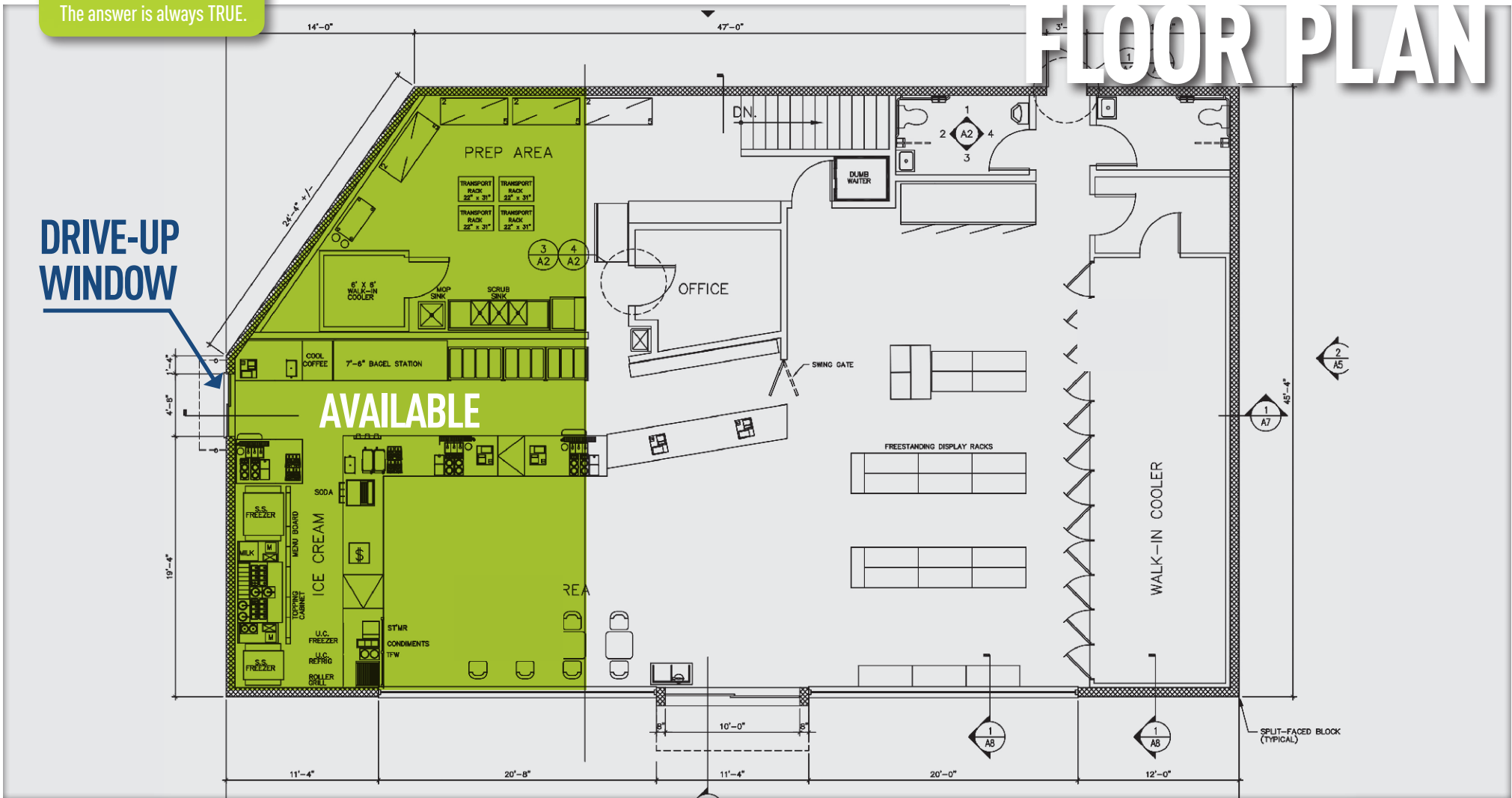
BUILD YOUR BUSINESS EFFORTLESSLY
FROM THE CONSTANT STREAM OF
GAS & C-STORE CUSTOMERS!

THIS HIGHLY VISIBLE SITE IS LOCATED
NEXT TO BJ'S, OCEAN STATE JOB LOTS
AND THE DMV!

HUGE TRAFFIC FLOW!

NOTE: The information contained in this document has been collected from various sources and should be independently verified for its accuracy. As such, TRUE shall not be held liable for any consequential damage arising out of any use or reliance on any content or materials contained herein.
*The town has indicated that a drive-through at this locations is very possible.

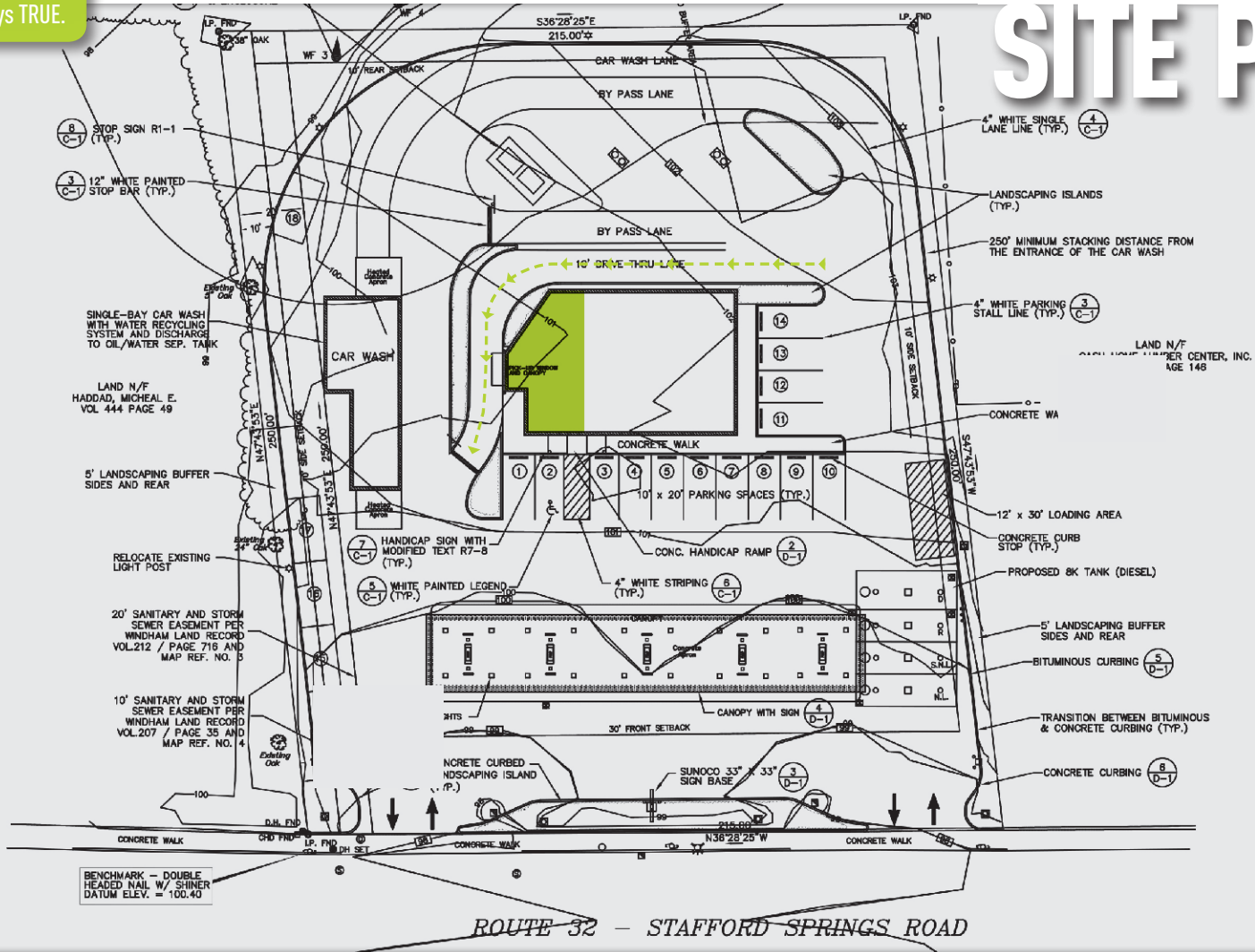
FLOOR PLAN



FLOOR PLAN SHOWING POTENTIAL LAYOUT OF TENANT AREA WITH DRIVE-UP WINDOW. THIS IS YOUR OPPORTUNITY TO BUILD YOUR BUSINESS THROUGH THE CONSTANT STREAM OF GAS & C-STORE CUSTOMERS!

The answer is always TRUE.

SITE PLAN



NOTE: The information contained in this document has been collected from various sources and should be independently verified for its accuracy. As such, TRUE shall not be held liable for any consequential damage arising out of any use or reliance on any content or materials contained herein.

truecre.com



The answer is always TRUE.

EXCLUSIVE AGENT:
Richard Schnider | 203.762.6173 | rs@truecre.com

FOR LEASE

FOOD | DRIVE-THRU OPPORTUNITY

1563 WEST MAIN ST. WILLIMANTIC CT 06226

AERIAL



SITE

NOTE: The information contained in this document has been collected from various sources and should be independently verified for its accuracy. As such, TRUE shall not be held liable for any consequential damage arising out of any use or reliance on any content or materials contained herein.