



725 Main St

725 Main St, Chula Vista, CA 91911

Jose Hernandez

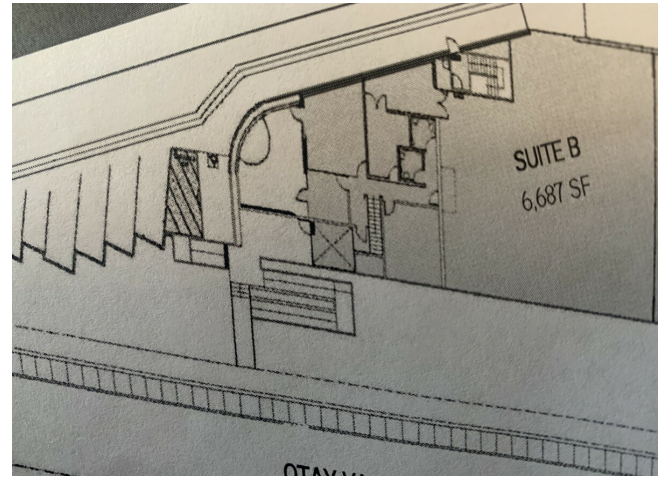
Jose D Hernandez
9051 Mira Mesa Blvd, Suite Box 261339, San Diego, CA 92126
jdmaincv@gmail.com
(858) 224-4759



725 Main St

Upon Request

725 Main Street Suite B 1 roll up door 14' height. 3 bathrooms ADA compliant, building height is approximately 20' height. Power 120/208 three phase 4 wire 600 amps. Approximately 6700 SF 3000 Office 3700 warehouse Approximately T1 Ready, Alarm, kitchen, break room, conference room, numerous large offices/flex rooms. Excellent exposure off of Main Street with direct access to the property from Main Street. Shows likes Class A office space, meticulously taken care of. Please do not disturb occupants, contact only Jose for scheduling a visit, COVID protocols in place, masks required to tour. Available Late November, 2021....



Rental Rate:	Upon Request
--------------	--------------

Property Type:	Industrial
----------------	------------

Property Subtype:	Showroom
-------------------	----------

Rentable Building Area:	13,000 SF
-------------------------	-----------

Year Built:	2009
-------------	------

Rental Rate Mo:	Upon Request
-----------------	--------------

1st Floor Ste B

Space Available	6,700 SF
Rental Rate	Upon Request
Date Available	December 01, 2021
Service Type	Negotiable
Office Size	6,700 SF
Space Type	Relet
Space Use	Industrial
Lease Term	Negotiable

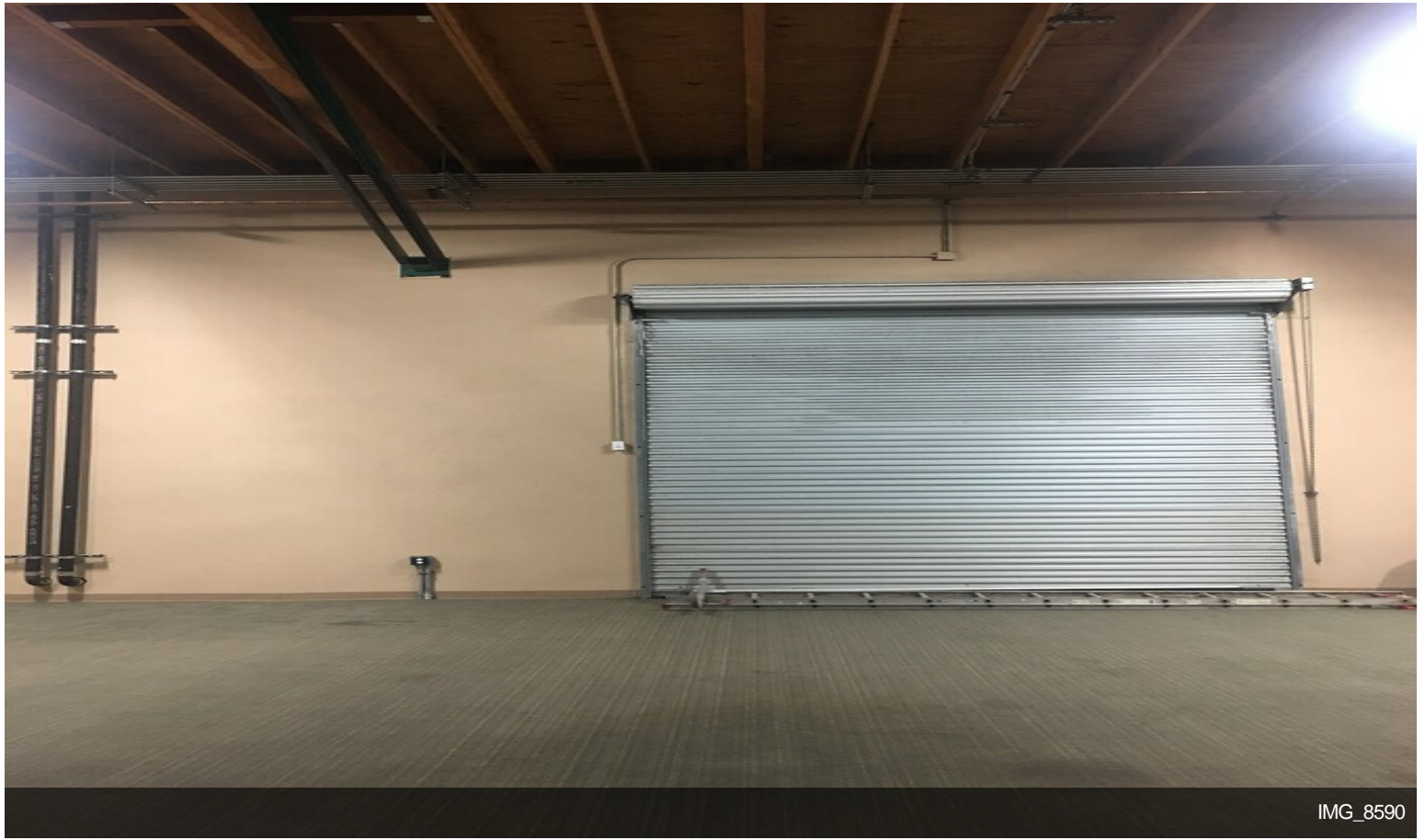
Office & Warehouse, 1 roll up door 14' height. 3 ADA compliant bathrooms, 2 storage/flex rooms. Do not Disturb Tenants. Must wear masks to tour the space. Power 120/208 three phase 4 wire 600 Amps Shows like Class A Office Space, great for corporate headquarters, high end sales. 6700 SF Approximately 3700 of warehouse and 3000 of office space. Three ADA complaint rest rooms, triple height ceilings in the warehouse, T1 Ready, alarm, cameras, break room, kitchenette, Air Conditioning in the offices. 14' roll up door, man door. Great exposure directly off of Main Street In Chula Vista, 3/4 mile to 805 N and S.



725 Main St, Chula Vista, CA 91911

725 Main Street Suite B
1 roll up door 14' height. 3 bathrooms ADA compliant, building height is approximately 20' height.
Power 120/208 three phase 4 wire 600 amps.
Approximately 6700 SF
3000 Office 3700 warehouse Approximately
T1 Ready, Alarm, kitchen, break room, conference room, numerous large offices/flex rooms. Excellent exposure off of Main Street with direct access to the property from Main Street.
Shows likes Class A office space, meticulously taken care of.
Please do not disturb occupants, contact only Jose for scheduling a visit, COVID protocols in place, masks required to tour.
Available Late November, 2021.

Property Photos



IMG_8590



Building Photo