

14551 E. NINE MILE ROAD
EASTPOINTE, MICHIGAN

INDUSTRIAL FOR LEASE
13,138 Square Feet Available



**SIGNATURE
ASSOCIATES**
KNOW SIGNATURE | KNOW RESULTS

EXCELLENT MANUFACTURING BUILDING



PROPERTY FEATURES

- 13,138 square feet available
- 2,000 square feet office
- 20' clear height
- (3) 10' x 14', 10' x 12' grade level doors
- (9) cranes: (2) 15-ton, (1) 5-ton, (1) 3-ton, (1) 2-ton, (4) JIB
- 25HP compressor with air lines throughout
- New Owner: Currently undergoing substantial improvements
- Lease Rate: \$7.50/sq. ft. Gross



For more information, please contact:

JOE STACK
(248) 359 0615
jstack@signatureassociates.com

CHRIS MONSOUR
(248) 948 0107
cmonsour@signatureassociates.com

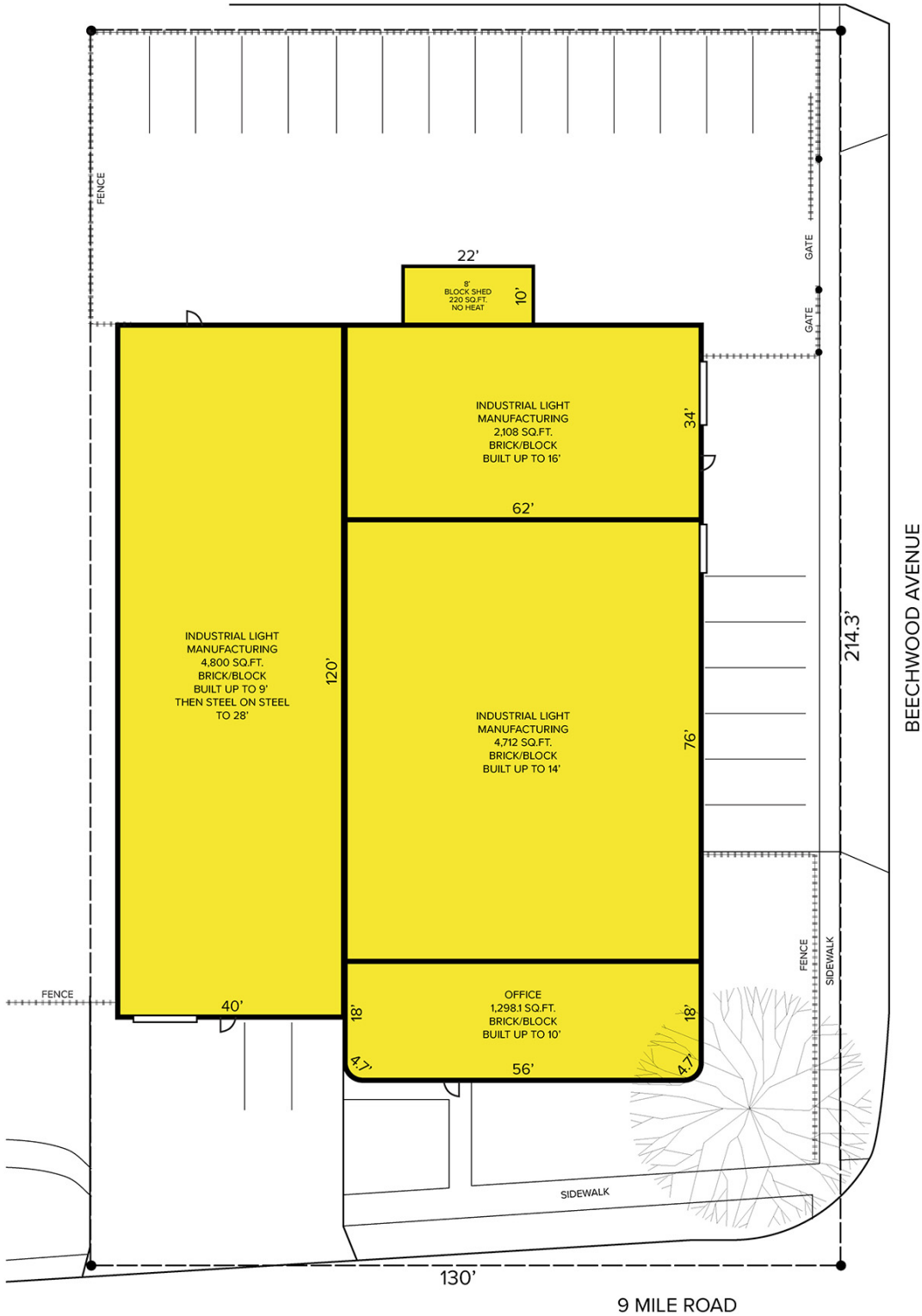
SIGNATURE ASSOCIATES
One Towne Square, Suite 1200
Southfield, MI 48076
www.signatureassociates.com

14551 E. Nine Mile Road – Eastpointe, Michigan

Industrial For Lease

13,138
Square Feet
AVAILABLE

Site Plan



For more information, please contact:

JOE STACK
(248) 359 0615
jstack@signatureassociates.com

CHRIS MONSOUR
(248) 948 0107
cmonsour@signatureassociates.com

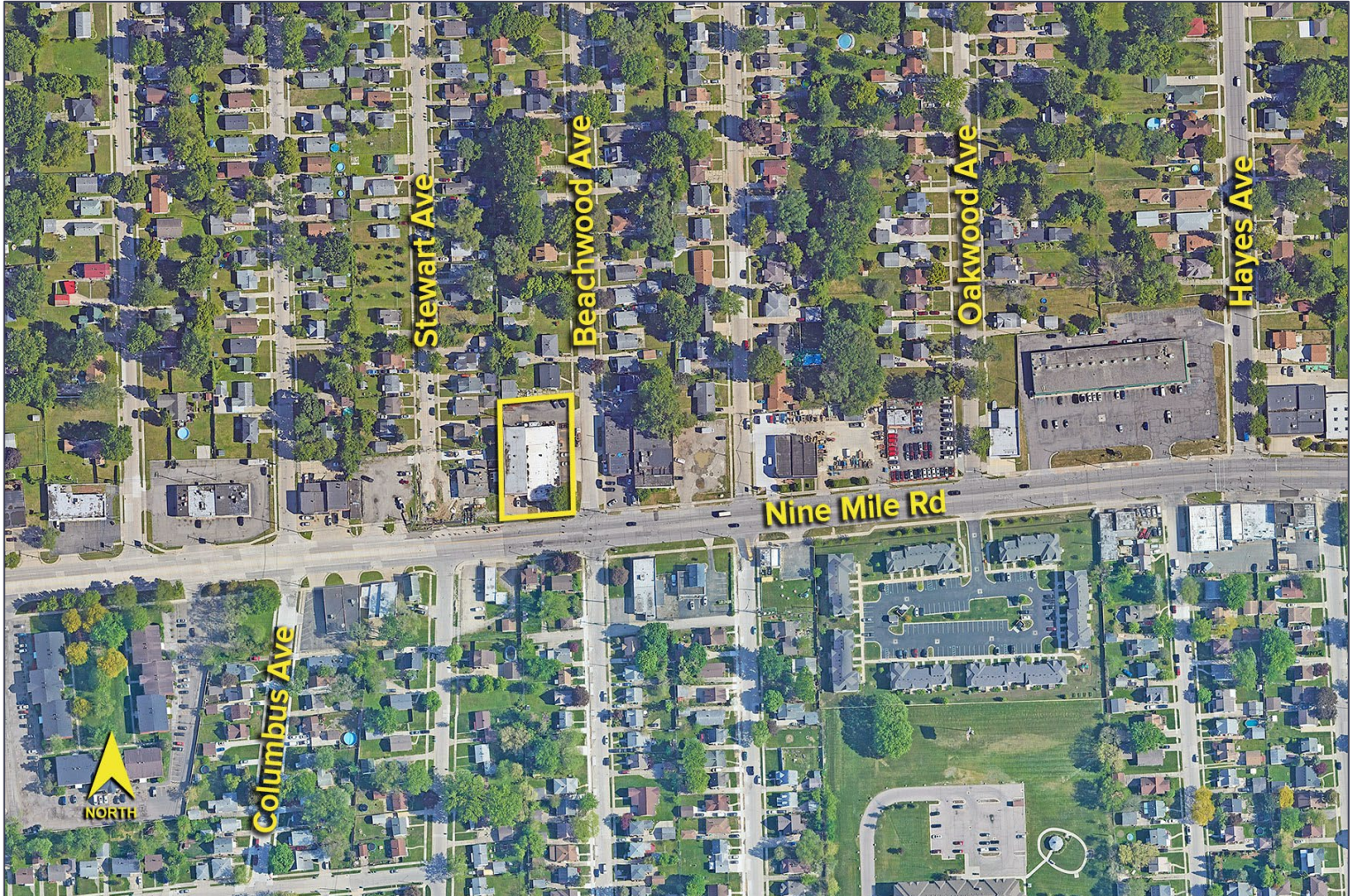
SIGNATURE ASSOCIATES
One Towne Square, Suite 1200
Southfield, MI 48076
www.signatureassociates.com

14551 E. Nine Mile Road – Eastpointe, Michigan

Industrial For Lease

13,138
Square Feet
AVAILABLE

Aerial



For more information, please contact:

JOE STACK
(248) 359 0615
jstack@signatureassociates.com

CHRIS MONSOUR
(248) 948 0107
cmonsour@signatureassociates.com

SIGNATURE ASSOCIATES
One Towne Square, Suite 1200
Southfield, MI 48076
www.signatureassociates.com