

NEWLY REMODELED RETAIL SPACE IN MONTAVILLA

FOR LEASE

THE MONTY

7850 SE STARK STREET
PORTLAND, OR 97215

+/-3,141 RSF

RATE: \$26.00/RSF

NNN: \$8.50

PARKING: 5 SPACES

TIM DUBOIS
tim@ecacre.com

JOSH BEAN, SIOR
josh@ecacre.com

503.205.0610



ETHOS COMMERCIAL ADVISORS LLC | 1111 NE FLANDERS ST, SUITE 201 | PORTLAND, OR 97232

These marketing materials do not constitute an offer to sell or lease, and do not constitute or contain promises, representations or warranties of any kind. The information in these marketing materials may contain approximations and images for illustration purposes. The owner, broker and their agents assume no risk or liability for inaccuracies, errors or omissions in these marketing materials. The terms and conditions of any transaction with respect to the property shall be contained exclusively in a written purchase and sale agreement or lease between the owner and the purchaser or tenant. Prospective purchasers or tenants should perform their own inspections of the property to verify its condition, permitted uses, and all other characteristics. | © 2023 Ethos Commercial Advisors LLC. All Rights Reserved. | 10.27.23

LICENSED IN OREGON AND WASHINGTON

Recently renovated showroom retail and production space in the heart of Montavilla. The space features exposed to structure bow truss ceilings with skylights along with five onsite parking spaces for customers, staff or delivery vehicles.

LOCATION

Stragically located in the center of Montavilla's thriving business district on SE Stark Street, The Monty benefits from the high foot-traffic generated by the eclectic mix of bars, restaurants, cafes and other soft good and service retailers. It is perfect for a business looking to establish a presence in one of the "Hot 'hoods in the US: 10 neighborhoods you need to visit."

HIGHLIGHTS

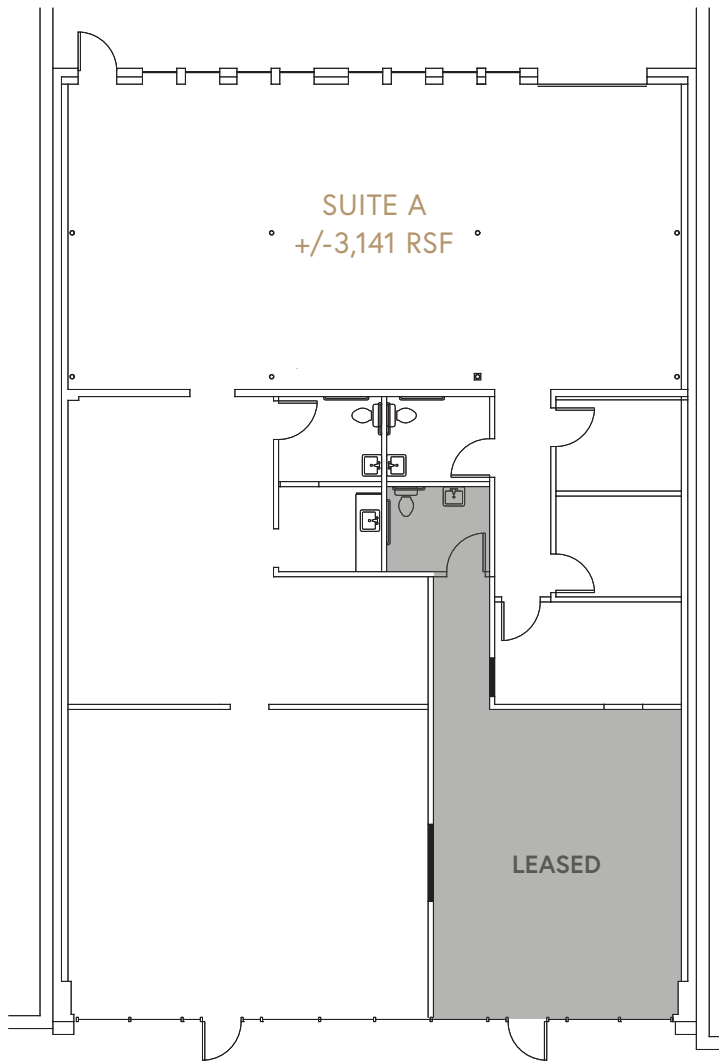
- Recently renovated
- High ceilings with skylights
- Neighborhood amenities abound
- Opportunity for building signage
- Stylish storefront with large windows
- Across from pedestrian-only street

An aerial photograph of a vibrant urban district. The street is paved with colorful geometric patterns in shades of blue, green, and yellow. Outdoor seating with white umbrellas is visible on the sidewalk. A "STREET CLOSED" sign is placed on the street. In the background, there are buildings, trees, and a clear sky.

**Vibrant district
with stylish
retail and bustling
foot traffic**

**Five onsite
parking spaces**

**Close to
Mt. Tabor Park**



THIS DRAWING IS NOT TO SCALE AND IS FOR ILLUSTRATIVE PURPOSES ONLY.

- High-visibility retail space
- Grade-level loading with roll-up door
- High ceilings with exposed structure and skylight
- Two private restrooms
- Three separate offices
- Kitchenette





7850 SE STARK STREET | PORTLAND, OR 97215

 Walk Score 88

 Transit Score 85

 Bike Score 92

Bus Routes 