

TWO B1 LOTS ON RT-29 TOTALING 2.1 ACRES

14203 Lee Hwy
Gainesville, VA 20155



Location, value and flexibility are truly outstanding for this 2.1 property zoned B-1 with exceptional visibility on Lee Highway, near I-66 and in the heart of Gainesville's commercial district. Offered at an unbeatable price for sale or as pad sites for lease ideal uses include urgent care, medical offices, child-care facility, hotel, retail, veterinary hospital, restaurant, assisted living facility and many more.

Sale Price: \$1,800,000

Wright Realty, Inc. founded in 1946 continues to serve your real estate needs with over 60 years and five generations of experience



Edward B. Wright, III

9009 Sudley Road
Manassas, Virginia 20110

Phone: 703-368-8136
Fax: 703-368-7238
Email: ebw@wright-realty.com
Website: www.wright-realty.com

Offering subject to errors, omissions, prior sale, change in price, or withdrawal without notice.





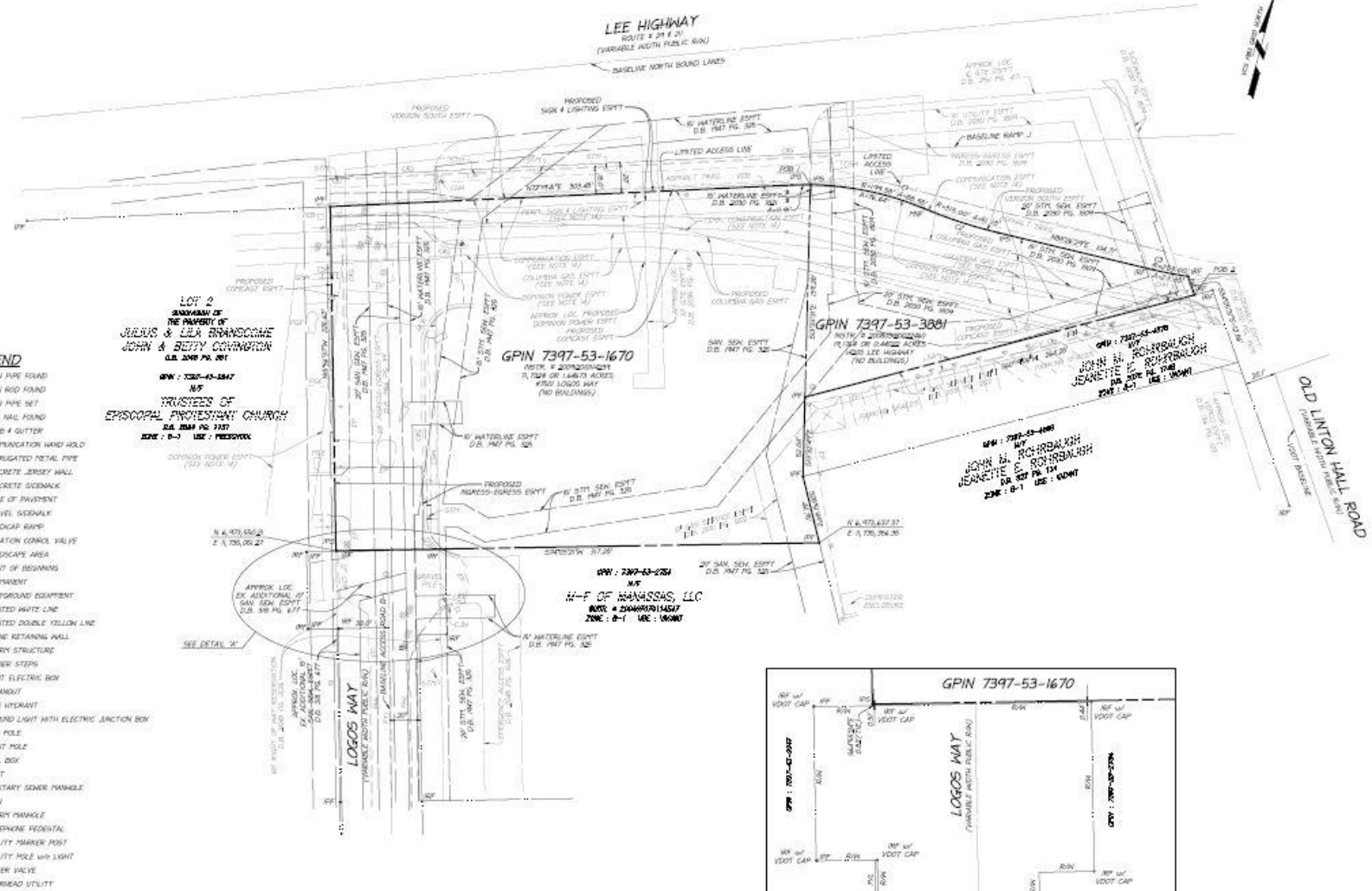


ALTAIRSPS LAND
TITLE SURVEY

PROPERTY OF
COMMONWEALTH OF VIRGINIA
INSTRUMENT # 20090320022460
INSTRUMENT # 2009020014239
BRENTSVILLE DISTRICT
PRINCE WILLIAM COUNTY, VIRGINIA



DATE: 1-20-20
DRAWN BY: KDU
SCALE: 1" = 30'
SHEET: 2 OF 2
FILE NUMBER: 2009-1-0-80



LEGEND

- IPY IRON PIPE ROAD
- IRP IRON ROD ROAD
- IPS IRON PIPE NET
- IPR IRON RAIL ROAD
- CAG CURB & GUTTER
- OHV COMMUNICATION HAND HOLD
- CHP CORRUGATED METAL PIPE
- CRH CONCRETE JERSEY WALL
- CSH CONCRETE SIDEWALK
- EP EDGE OF PAVEMENT
- GSW GRAVEL SIDEWALK
- HCR HANDICAP RAMP
- ICV IRRIGATION CONTROL VALVE
- LSA LANDSCAPE AREA
- FOB POINT OF BEGINNING
- PERM PERMANENT
- PGE PLAYGROUND EQUIPMENT
- PHL PAINTED WHITE LINE
- PFL PAINTED DOUBLE YELLOW LINE
- SRK STONE RETAINING WALL
- STY STORY STRUCTURE
- TSP TYPED STEPS
- VED VEGETATION
- CLD CLEARDUT
- FIW FIRE HYDRANT
- GLB GROUND LIGHT WITH ELECTRIC JUNCTION BOX
- GUP GUY POLE
- LIP LIGHT POLE
- MBL MAIL BOX
- POST
- SSS SANITARY SEWER MANHOLE
- SGW SIGN
- STY STORY MANHOLE
- TEP TELEPHONE PEDestal
- UPM UTILITY MARKER POST
- ULP UTILITY POLE WITH LIGHT
- WV WATER VALVE
- OUV OVERHEAD UTILITY
- GRD GUARD RAIL
- SFR SPLIT RAIL FENCE
- WDF WOOD FENCE
- AEU APPROXIMATE LOCATION UNDERGROUND ELECTRIC LINE (RED PAINT MARKS)
- ATU APPROXIMATE LOCATION UNDERGROUND TELECOMMUNICATION LINE (ORANGE PAINT MARKS)
- AWU APPROXIMATE LOCATION UNDERGROUND WATERLINE (BLUE PAINT MARKS)

LOT 2
SUBDIVISION OF
THE PROPERTY OF
JULIUS & LENA BRANSKOME
JOHN & BETTY COMPTON
O.S. 2008 PG. 001

OWN: 1307-45-2847
M-F
TRUSTEES OF
EPISCOPAL PROTESTANT CHURCH
O.S. 2004 PG. 737
ZONE: B-1 USE: RESIDENC

GPIN 7397-53-1670
NOTE: 4.201202020202
7.7000 OR LARGER ACRES
7.7000 LOGS MAY
(NO BUILDINGS)

GPIN 7397-53-3081
NOTE: 2.201202020202
7.7000 OR LARGER ACRES
7.7000 LOGS MAY
(NO BUILDINGS)

OWN: 2007-03-1000
M-F
JOHN H. ROHRBACH
JEANETTE E. ROHRBACH
O.S. 2007 PG. 004
ZONE: B-1 USE: MGMT

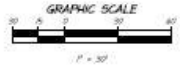
OWN: 2307-03-2251
M-F
M-F OF MANASSAS, LLC
NOTE: 4.2004001014547
ZONE: B-1 USE: MGMT

CURVE DATA

NO.	CHORD	ARC LENGTH	ANGLE	CHORD BEARING	ARC BEARING
1	199.00	252.977	88.51	S 71.02° E	S 62.52° W
2	135.00	175.871	81.81	S 27.24° E	S 62.52° W
3	224.00	317.770	82.84	S 62.52° E	N 27.24° W



DETAIL 'A'
NO SCALE



1-17-2021 2021-03-10-1-0 LOGS WAY & LEE HIGHWAY SURVEY PLATFORM - BOUNDARY 20090320022460



HILLWOOD DR

JOHN MARSHALL HWY E OF LEE HWY

LEE HWY

29

29

LEE HWY

LEE HWY E OF

LOGOS WAY

CHAVIS AVE

OLD UNION FALLS RD

Feet



