

| EXCHANGE
| FLAGS

www.exchangeflags.com

Contents

Introduction	4
Location	6-7
Walker House	8-10
Horton House	11-13
Well-connected	16-19
What's Here	20-21
Agents details	22

Introduction

Exchange Flags is an iconic Landmark in the heart of Liverpool's Commercial District. Comprehensively refurbished and remodelled to provide modern and efficient workspace with offices from 1,000 sq.ft to 20,000 sq.ft and introducing a vibrant new restaurant destination for the City.

Exchange Flags comprises two distinct buildings; Horton House and Walker House, combining stunning historic architecture with modern, stylish refurbishment providing Grade A offices.



The Flags



1. Princes Dock
2. Museum Of Liverpool
3. James St Station
4. Moorfields Station
5. Town Hall
6. St Paul's Square
7. Liverpool One
8. Royal Liver Building
9. Cunard Building
10. Port of Liverpool Building
11. Exchange Station
12. Mann Island
13. India Building



1. Starbucks
2. Costa
3. Fazenda
- Vincent's
- Gourmet Coffee
- Philpotts
4. Mowgli
5. Cau
6. Gino D'Acampo
7. Bacaro
8. Castle St Townhouse
9. San Carlo
10. Restaurant Bar & Grill
11. The Alchemist
12. Caffè Nero
13. Neighbourhood
14. Piccolino



1. Malmaison
2. Crowne Plaza
3. Hilton
4. Raddisson Blu
5. Mercure Atlantic Tower
6. Hard Days Night
7. Ingido
8. Travellodge
9. Aloft
10. easyHotel



1. JD Gyms
2. Nourish Boutique Gym
3. Signature Fit Club
4. The Yoga Hub
5. White Wolf Yoga

Walker House

- Large open floor plates with panoramic views of Liverpool
- BREEAM rating “Very Good”
- Newly remodelled reception area
- Secure basement car parking
- Fully accessible raised floors
- LG7 compliant lighting
- High specification HVAC comfort cooling
- Bicycle racks and electric car charging point
- Shower facilities



Reception



Available space

[Back to contents](#)

4TH FLOOR

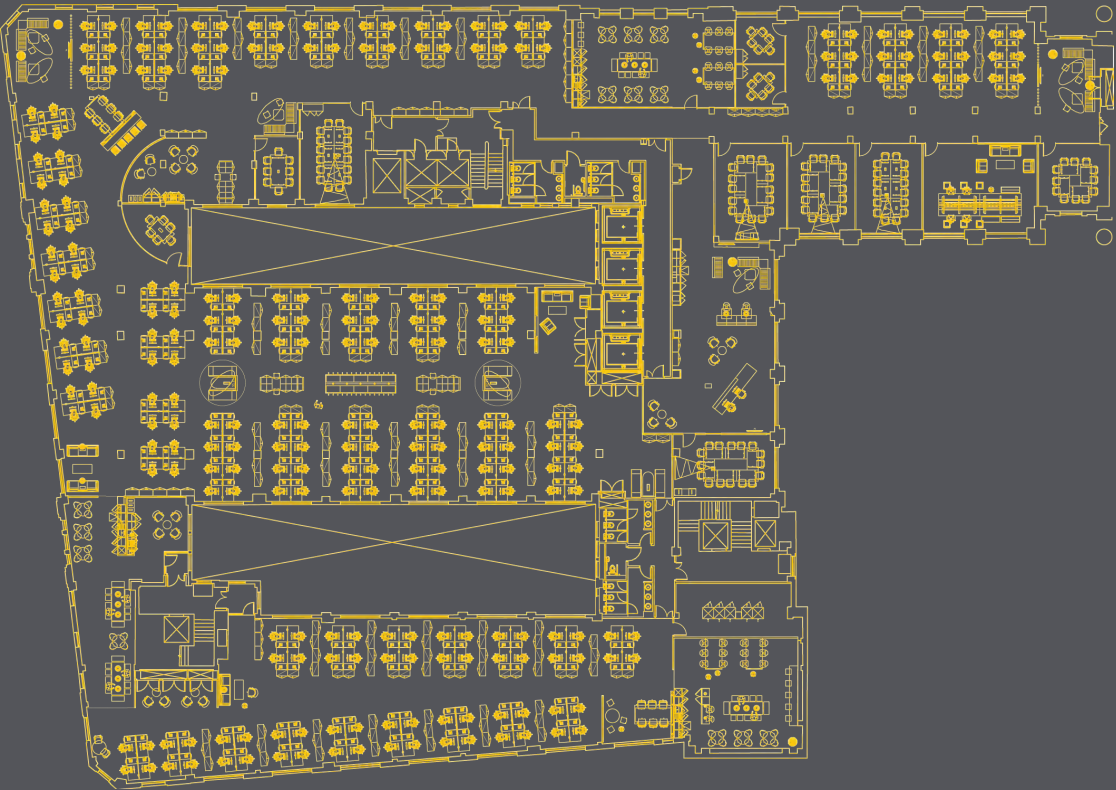
10,764 SQ FT | 999.97 SQ M

PART 5TH FLOOR

6,100 SQ FT | 566.7 SQ M

PART 7TH FLOOR

2,485 SQ FT | 230.8 SQ M



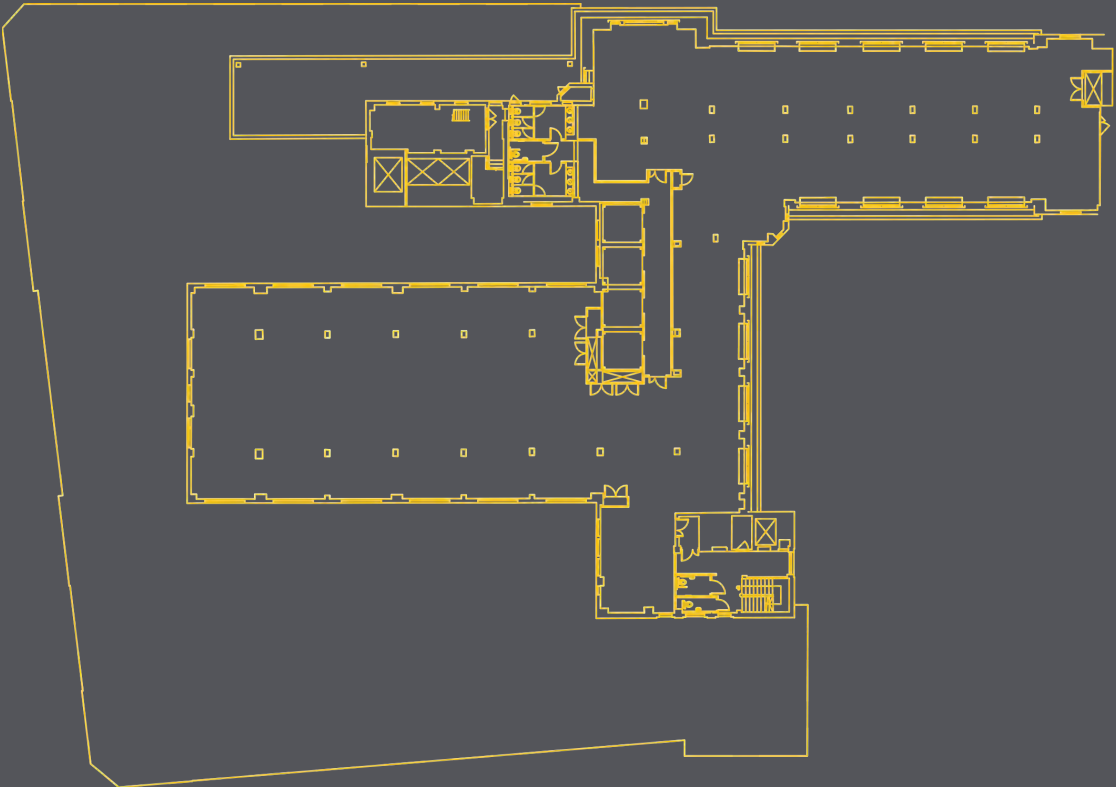
Horton House

- Stylish contemporary reception area
- High specification HVAC comfort cooling
- Secure basement car parking
- Fully accessible raised floors
- LG7 compliant lighting
- Shower facilities
- Bicycle racks and electric car charging point



9TH FLOOR

SQFT 3,974 | SQM 369



Meeting Room



Monument



View from the roof of Exchange Flags

Well-connected

With panoramic views of Liverpool, Exchange Flags offers an unrivalled location in the Commercial District. Positioned directly behind the Town Hall and walking distance from all of the cities key places it's just a short stroll to Liverpool ONE, and seconds from Moorfields train station.

Car

Liverpool has excellent transport links with direct access to the M62, M57, and M53 motorways leading to the national motorway network.

Rail

Liverpool Lime Street provides mainline service connections to all major UK towns and cities with London Euston just over 2 hours away with trains departing hourly.

Air

Liverpool John Lennon airport, with direct flights to over 70 destinations, is just 9 miles away (around 20 minutes by taxi).

Ferry

Just a short stroll to the Pierhead will have you aboard Mersey Ferries who offer a regular service to Birkenhead and the Wirral.





The Flags



Liverpool Town Hall



Mowgli

Situated at the top of Castle Street, Liverpool's newly remodelled gastronomic quarter, Exchange Flags is surrounded by the finest restaurants and bars in the city and just a short walk from Liverpool ONE, home to the best shops in the city.

What's Here

Award winning restaurants, Fazenda and Vincents are on site, so you don't need to venture far to eat out in luxury surroundings.

Philpotts and Gourmet Coffee offer an informal setting where you can grab some lunch or a healthy breakfast.

Fazenda



Vincents Cafe



San Carlo desert

Wellbeing is important to us, and we run bi-weekly yoga and meditation classes, available to all tenants.

With our regular events programme at Exchange Flags there's always something to do.

Vincents Cafe



Philpotts



Bacaro

Exchange Flags is within walking distance of all the City's key destinations.

Piccolino



Neighbourhood

Castle st Townhouse



Letting Agents



GVA ian.steele@gva.co.uk 0151 471 6707 jonathan.lowe@gva.co.uk 0151 471 6729	Worthington Owen mark@worthingtonowen.com 0151 230 1130 andrew@worthingtonowen.com 0151 363 3877
---	---

For further information or to arrange a viewing please contact the joint agents.

BREEAM

Walker House has achieved a BREEAM rating of “Very Good”.

EPC

Walker House has an energy performance rating of C62.

SERVICE CHARGE

Any ingoing tenant will be responsible for the payment of a service charge towards the upkeep and maintenance of the common areas.

VAT

All figures quoted are exclusive of, but may be liable to, VAT at the prevailing rate.

@ExchangeFlags

/ExchangeFlags

/company/exchange-flags

/exchangeflags

www.exchangeflags.com

GVA hereby gives notice that the information provided (either for itself, for any joint agents or for the vendors lessors of this property whose agent GVA is in this brochure is provided on the following conditions:

1. The particulars are set out as a general outline only, for the guidance of intending purchasers and/or lessees and do not constitute an offer or contract, or part of an offer or contract.
2. All descriptions, dimensions and references to this property’s condition and any necessary permission for use and occupation, and any other relevant details, are given in good faith and are believed to be correct. However, any intending purchasers or tenants should not rely on them as statements or representations of fact but satisfy themselves of their correctness by inspection or otherwise.
1. No person in the employment of GVA, or any joint agents, has any authority to make or give any representation or warranty whatsoever in relation to the property or properties in this brochure.
2. All prices quoted are exclusive of VAT.
3. GVA shall have no liability whatsoever in relation to any documents contained within the brochure or any elements of the brochure which were prepared solely by third parties, and not by GVA.

