

3125 Poplarwood Ct

OFFICES FOR LEASE



- ✓ Well-Known Highwoods Office Park Location
- ✓ Scenic, Wooded Campus Environment
- ✓ Easy Access to I-440 & Downtown Raleigh
- ✓ On-Site Property Management and Maintenance

LEASES AVAILABLE

PROPERTY DETAILS

3125 Poplarwood Court offers thoughtfully updated office space with efficient layouts designed to support a variety of business needs. Tenants benefit from a professional atmosphere, on-site property management, ample parking, and access to the amenities of Highwoods Office Park, creating a functional and comfortable workplace environment.

AVAILABILITIES

Suite 200 – 4,158 SF, Suite 150 – 2,193 SF,
Suite 106 – 466 SF, Suite 111 – 210 SF,
Suite 107 – 206 SF, Suite 109 – 204 SF



3125 Poplarwood Ct Exterior



Outdoor Seating Within the Office Park



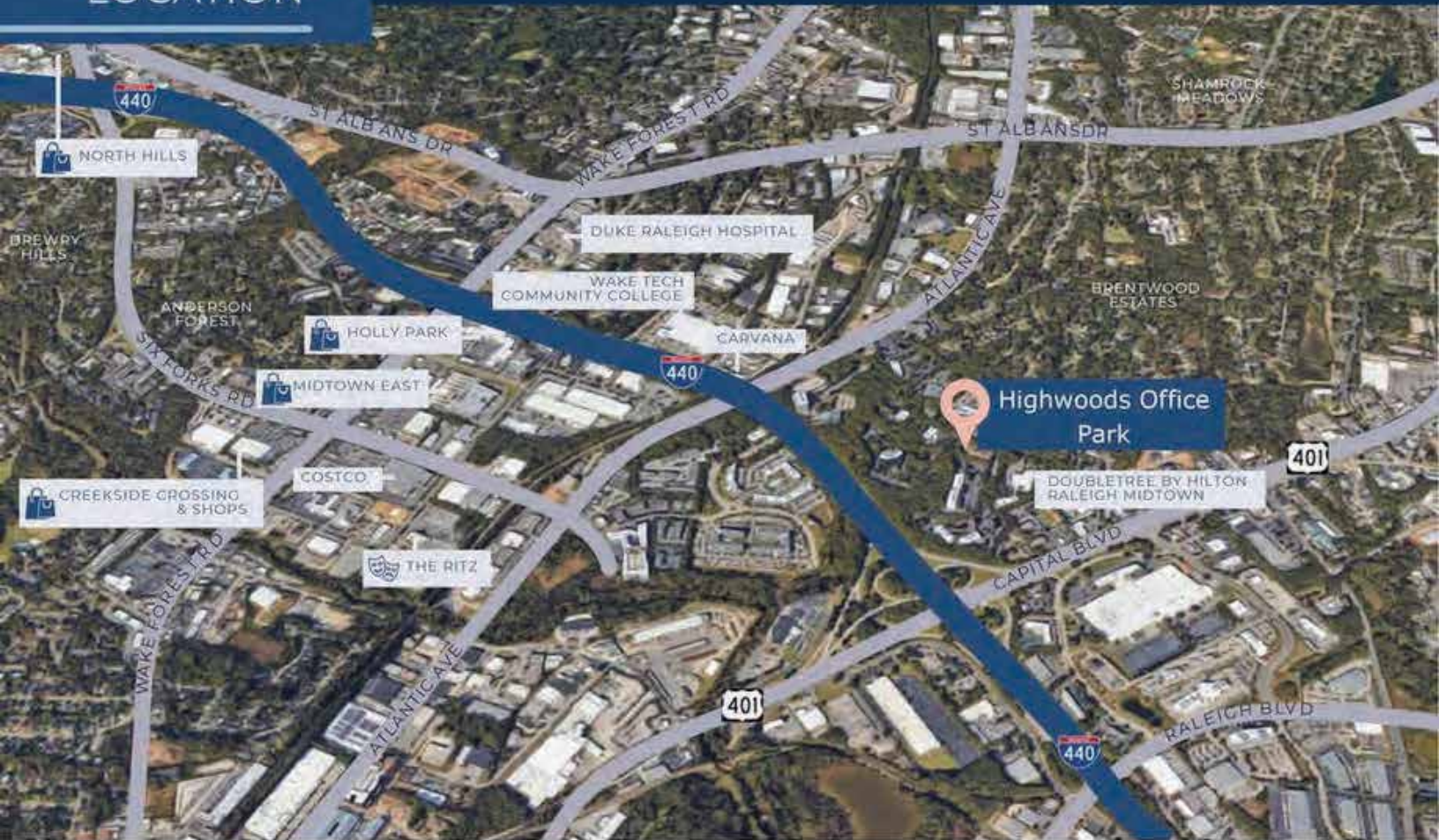
Joe Van Gogh Coffee Shop

FOR MORE INFO, CONTACT

Rachael Gaston | 619.855.2960 | rachael.gaston@debnamcre.com

WWW.DebnamCRE.com





Quick access to amenity-rich neighborhoods with dining, retail, and hotels.



DISTANCE TO

Atlantic Ave	0.4 mi
Capital Blvd	0.2 mi
I-440	0.7 mi
Midtown	2.0 mi
Downtown Raleigh	4.0 mi

FOR MORE INFO, CONTACT

Rachael Gaston | 619.855.2960 | rachael.gaston@debnamcre.com

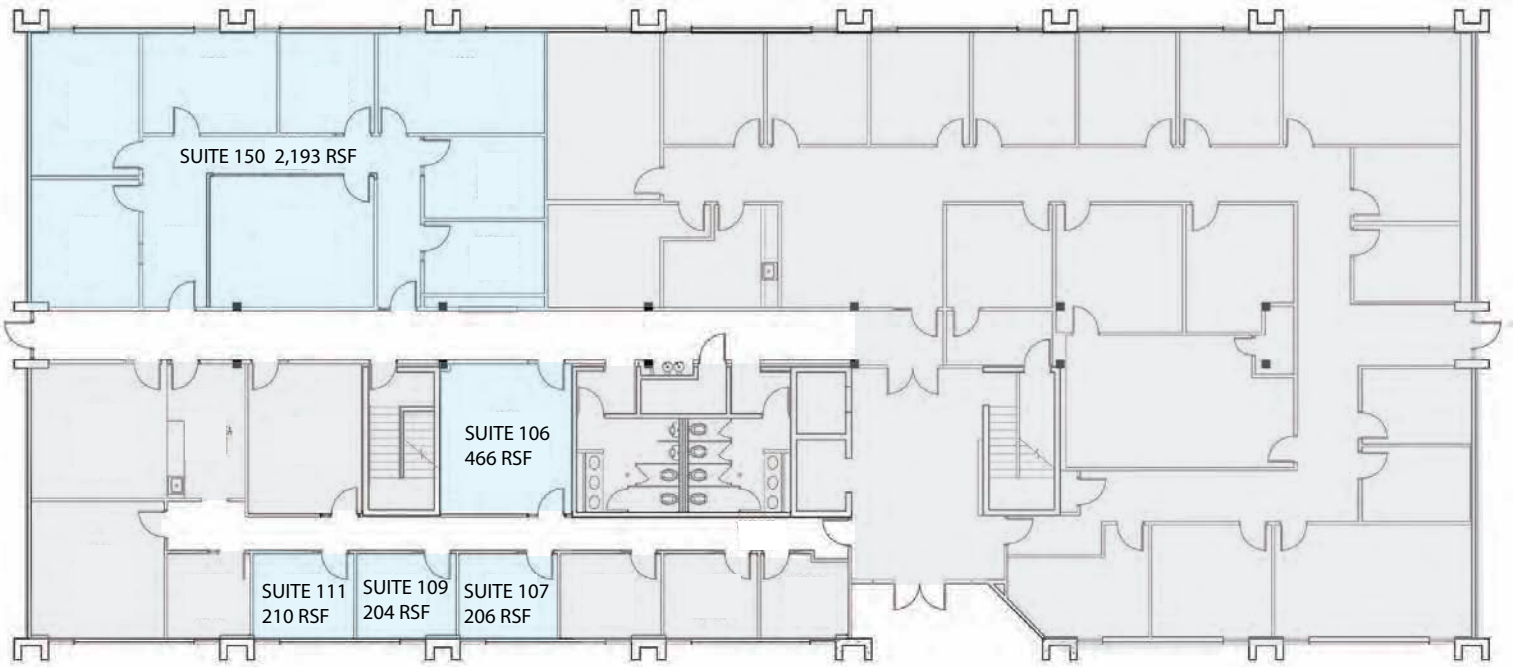
WWW.DebnamCRE.com



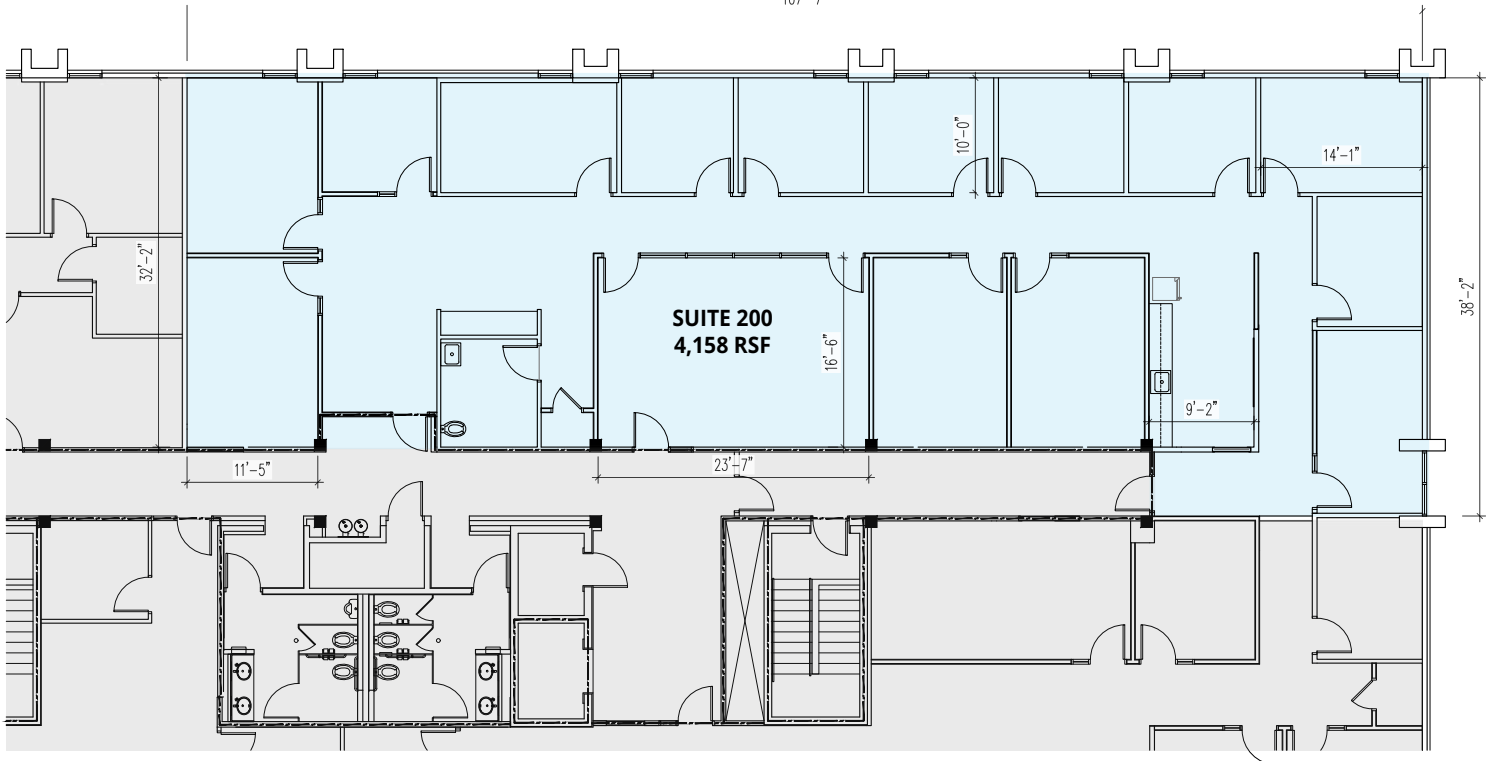
3125 POPLARWOOD COURT

RALEIGH NC 27604

AVAILABILITIES: SUITE 150: 2,193 RSF, SUITE 106: 466 RSF, SUITE 107: 206 RSF
SUITE 109: 204 RSF, SUITE 111: 210 RSF, Suite 200: 4,158 RSF



107'-7"



Disclaimer: The above floor plan is not to scale.

RACHAEL GASTON
Broker / Leasing Agent
Rachael.Gaston@debnamcre.com

DEBNAM COMMERCIAL REAL ESTATE
2900 Highwoods Blvd. Ste 200
Raleigh, NC 27604
919-946-6785
DEBNAMCRE.COM