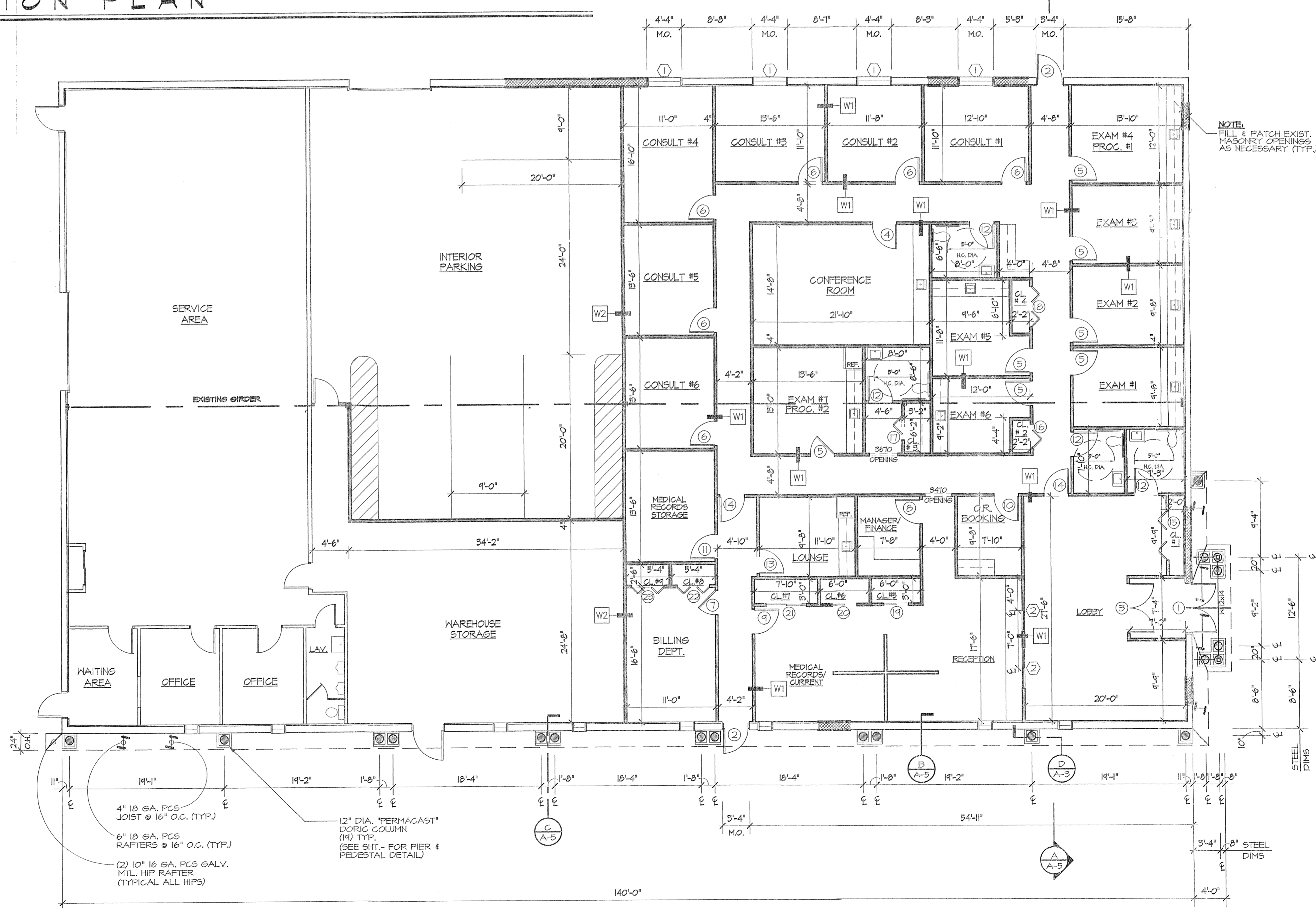


PARTIAL FOUNDATION PLAN
SCALE: 1/8"=1'-0"



FLOOR PLAN
SCALE: 1/8"=1'-0"

LEGEND

- W1 HALL TYPE TAG (SEE DETAILS, SHEET A-4)
- # DOOR TYPE TAG (SEE SCHEDULE, SHEET A-4)
- # WINDOW TYPE TAG (SEE SCHEDULE, SHEET A-4)
- EXISTING CONSTRUCTION
- PROPOSED CONSTRUCTION
- MASONRY WALL FILL & PATCH

MEDICAL AREA: 5,566 SQ. FT.
VETERINARIAN AREA: 2,534 SQ. FT.
STORAGE AREA: 1,054 SQ. FT.
PARKING AREA: 2,046 SQ. FT.

HAWKINS WEBB JAEGER P.L.L.C.
ENGINEERS-ARCHITECTS-SURVEYORS-PLANNERS
3239 RTE. 117 BUILDING 9-SUITE 1 MEDFORD, NEW YORK 11763
PHONE (631) 732-7777, N.Y.S. LICENSE NO. 04648 P.E.L.S.
ESTAB. 1872

PROJECT NO.	DATE	REVISION
05-0119		
DRAWN BY: R.J.F.		
DESIGNED BY: M.F.M., A.J.A.		
DATE: APRIL 20, 2005		
CKD. BY:		
DATE:		
SCALE: 1/4"=1'-0"		
CADD FILE:		

PROJECT: MEDICAL OFFICE FOR GENERAL SURGERY ASSOC.
PARTIAL FOUND. PLAN, FLOOR PLAN
SITUAET AT: STATAKET, NY