



RCB
DEVELOPMENT

7410 NORTHSIDE DRIVE

North Charleston, SC 29420

FOR LEASE

Suites ranging from 2,441 to 5,517 SF

BUILDING HIGHLIGHTS

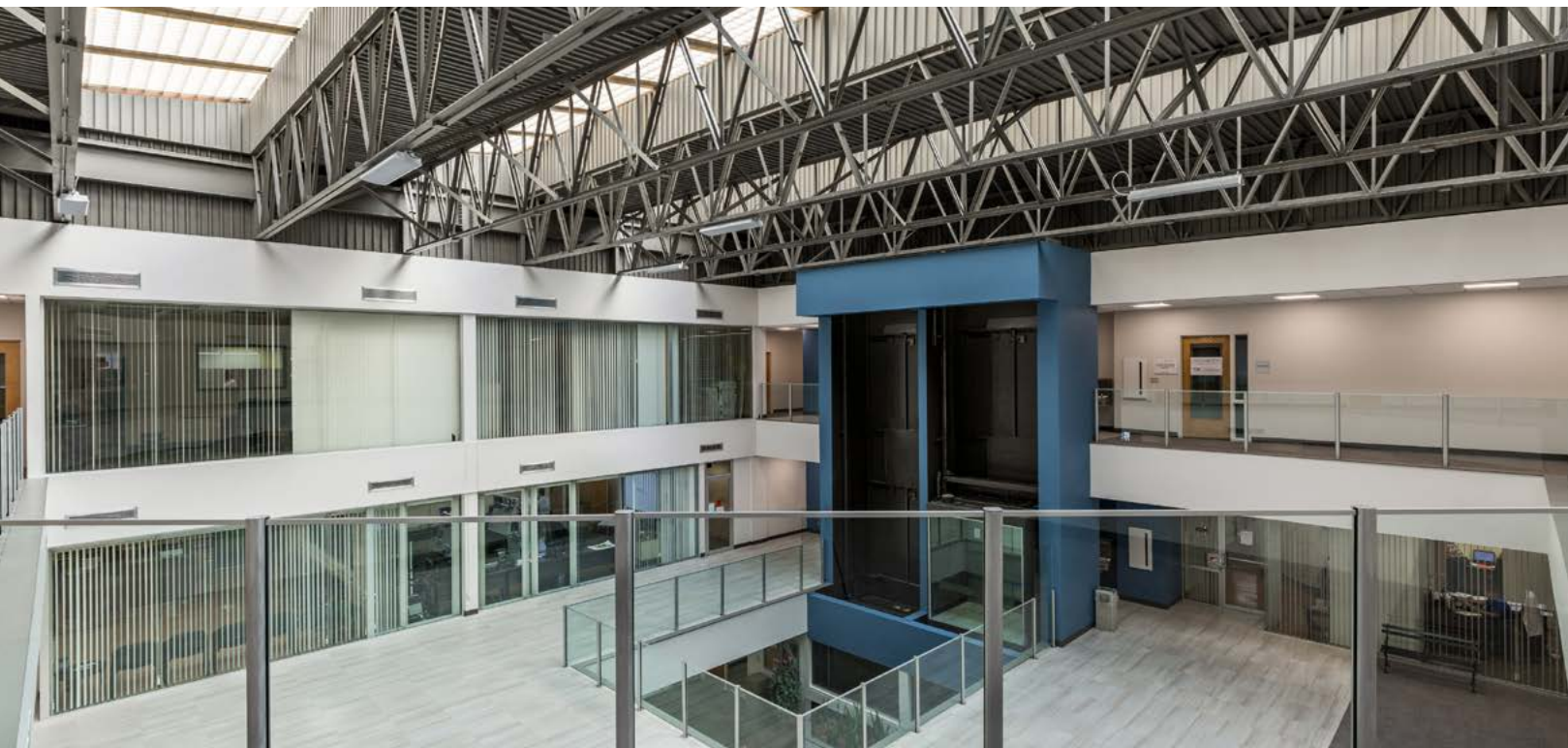


Brand new spec suites now available

Newly renovated facade, lobby and common area

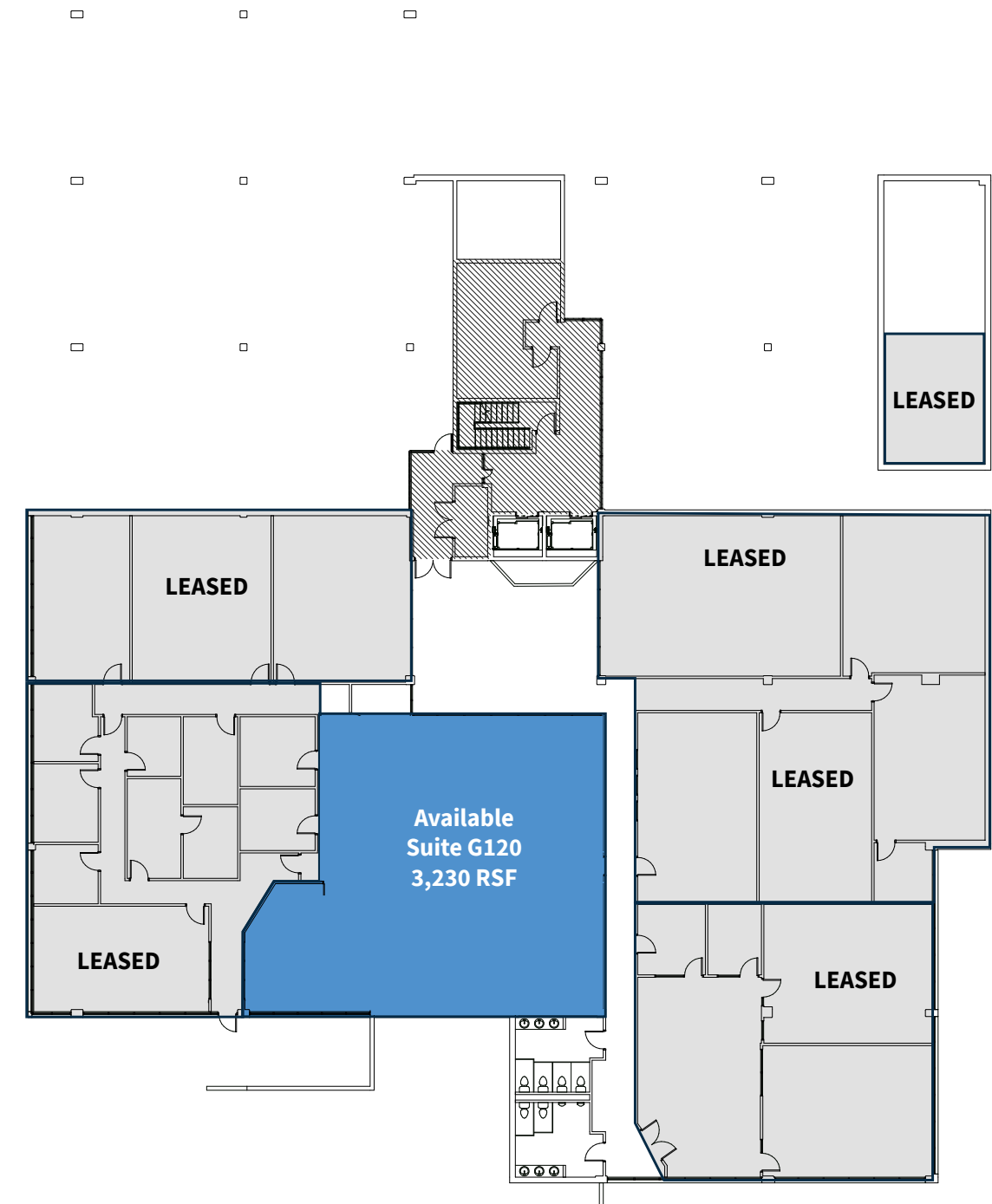
Parking 3.00/1,000 RSF

Convenient access to I-26 via Ashley Phosphate Road - Exit 209



FLOOR PLANS

GROUND FLOOR

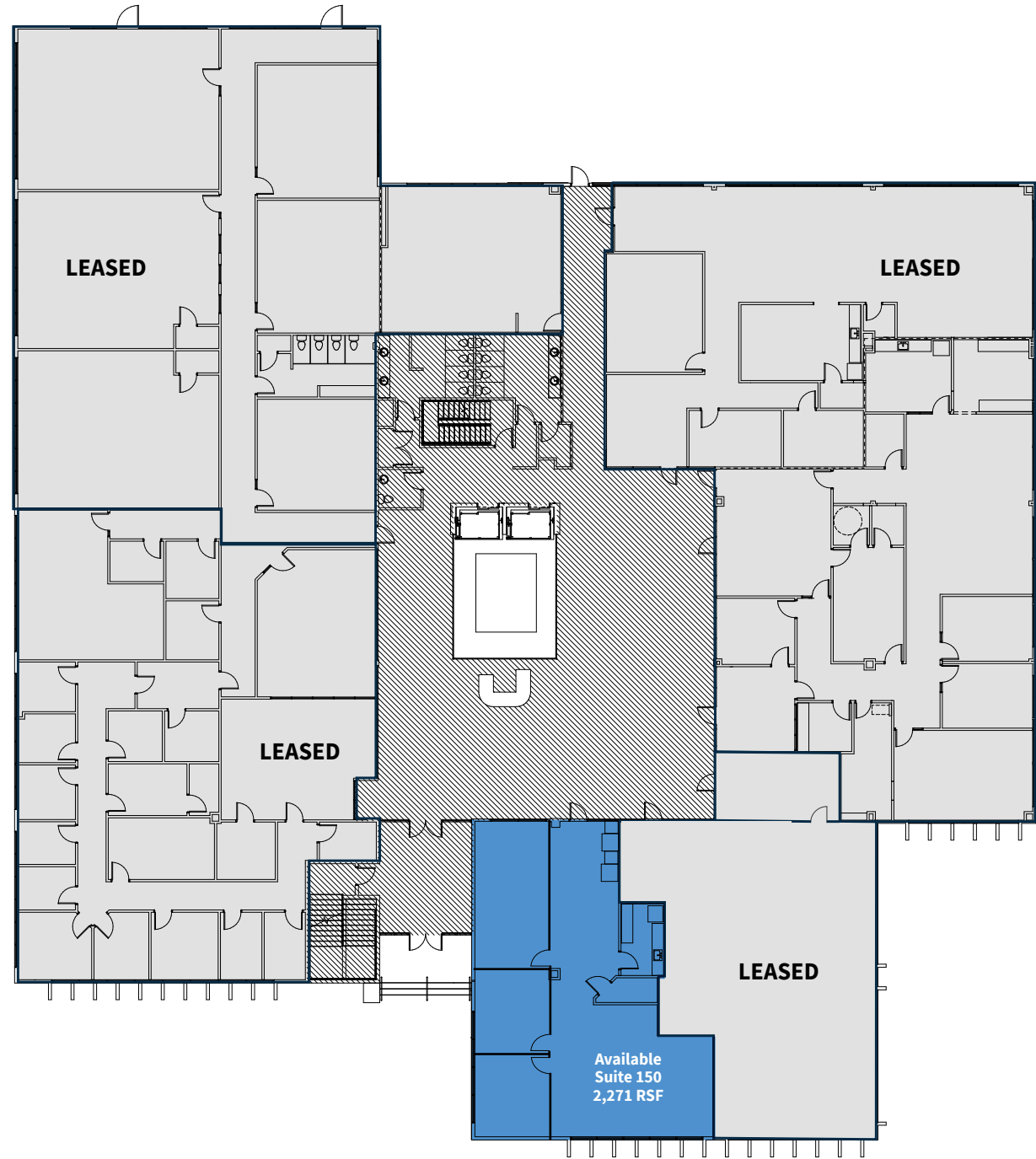


Suite G120

3,230 RSF

FLOOR PLANS

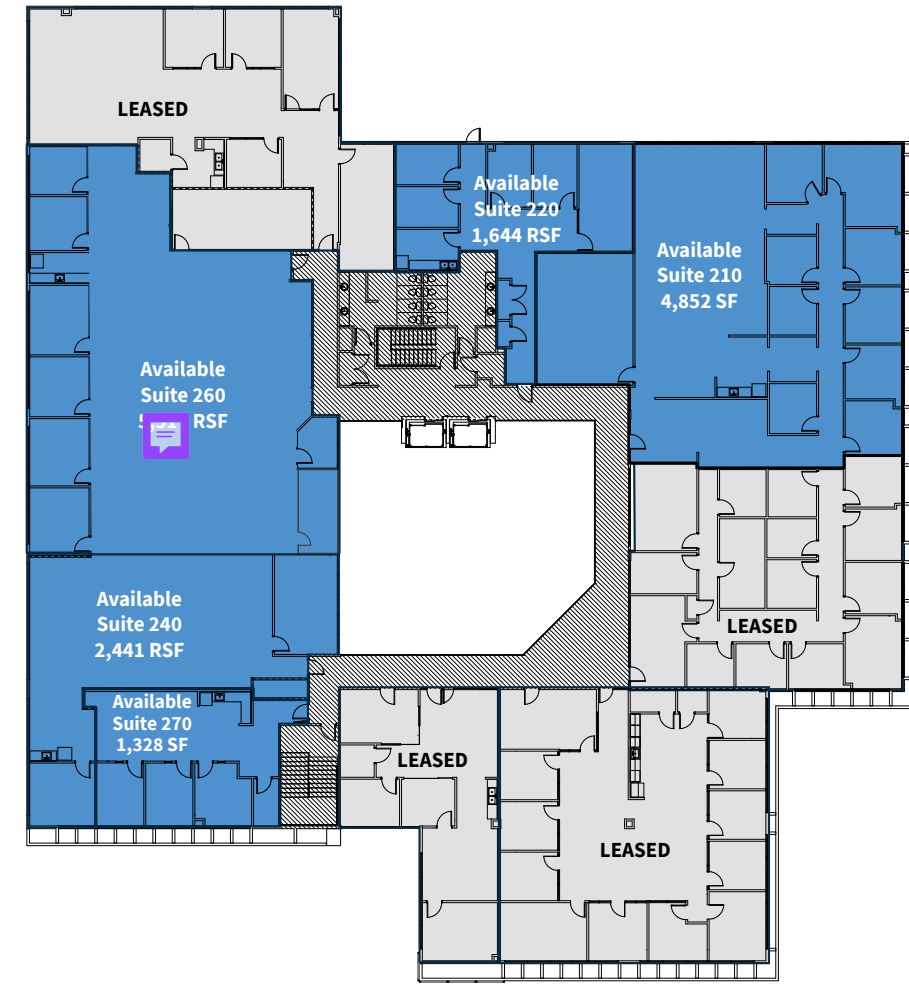
FIRST FLOOR



Suite 150	2,271 RSF
------------------	-----------

FLOOR PLANS

SECOND FLOOR



SUITE 260 IMPROVEMENTS

New LED lights | New ceiling tiles and grid |
 New carpet tiles | Newly painted |
 Upgraded HVAC

Suite 210	4,852 SF
Suite 220	1,644 RSF
Suite 240	2,441 SF
Suite 260	5,517 RSF
Suite 270	1,328 SF

ACCESS & AMENITIES



7410 NORTHSIDE DRIVE
North Charleston, SC 29420

Food and Beverage

- 1 Ruby Tuesday
- 2 McDonald's
- 3 Waffle House
- 4 Los Parados
- 5 Taco Bell
- 6 Wendy's
- 7 Denny's
- 8 Penalty Box Sports Lounge
- 9 Mei Thai Restaurant & Sushi Bar
- 10 Olive Garden
- 11 Outback Steakhouse
- 12 Chik-fil-A
- 13 Pizza Hut
- 14 Jimmy John's

- 15 Chipotle Mexican Grill
- 16 Starbucks (1)
- 17 Panera Bread
- 18 Panda Express
- 19 Chuck E. Cheese's
- 20 Starbucks (2)
- 21 LongHorn Steakhouse
- 22 Cold Stone Creamery
- 23 Firehouse Subs
- 24 Smokey Bones Bar & Fire Grill

Education

- 1 ECPI University
- 2 Trident Technical College

Hotel & Lodging

- 1 SpringHill Suites by Marriott
- 2 Fairfield Inn & Suites by Marriott
- 3 Hyatt Place North Charleston
- 4 DoubleTree by Hilton Hotel
- 5 Holiday Inn Express & Suites

Retail

- 1 Lowe's
- 2 The Home Depot
- 3 Northwoods Mall
- 4 Barnes & Noble
- 5 Best Buy
- 6 Walmart Supercenter
- 7 Target
- 8 North Rivers Town Center

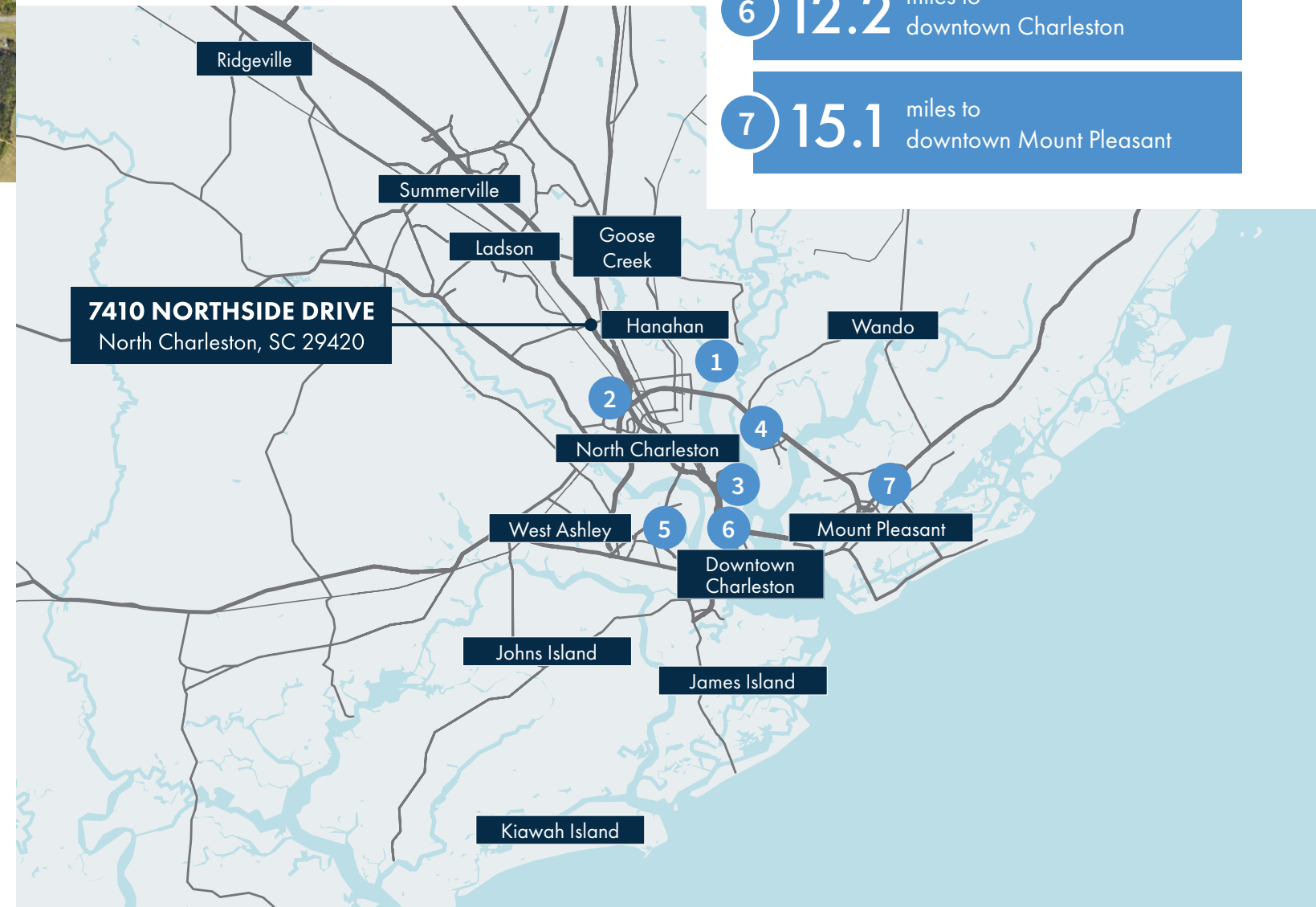
LOCATION

LOCATION OVERVIEW

7410 Northside Drive is located in North Charleston just 0.2 miles from I-26. The property is in close proximity to major population bases; downtown, North Charleston, Daniel Island, Mount Pleasant and West Ashley. Accessible via either I-26 or Rivers Avenue, 7410 Northside Drive is connected to the area's major arterial roadways serving a logistical advantage for both businesses and their employees.

Another location attribute to the property is its close proximity to the commercial districts of North Charleston. Specifically, 7410 Northside Drive is proximate to North Charleston's North Pointe Plaza, North Rivers Town Center, Northwoods Mall, Trident Technical College and numerous apartment complexes. Recognized as one of Charleston's up-and-coming areas, North Charleston draws both residents, businesses and employees alike.

- 1 5.6 miles to North Charleston Port Terminal
- 2 7.2 miles to the Charleston International Airport
- 3 8.3 miles to the new Hugh Leatherman Terminal
- 4 10.0 miles to Daniel Island
- 5 10.6 miles to downtown West Ashley
- 6 12.2 miles to downtown Charleston
- 7 15.1 miles to downtown Mount Pleasant



7410 NORTHSIDE DRIVE
North Charleston, SC 29420



For more information, contact:

Brian Connolly

+1 202.316.4846

brian.connolly@jll.com

Although information has been obtained from sources deemed reliable, JLL does not make any guarantees, warranties or representations, express or implied, as to the completeness or accuracy as to the information contained herein. Any projections, opinions, assumptions or estimates used are for example only. There may be differences between projected and actual results, and those differences may be material. JLL does not accept any liability for any loss or damage suffered by any party resulting from reliance on this information. If the recipient of this information has signed a confidentiality agreement with JLL regarding this matter, this information is subject to the terms of that agreement. ©2026 Jones Lang LaSalle Brokerage, Inc. All rights reserved.

