

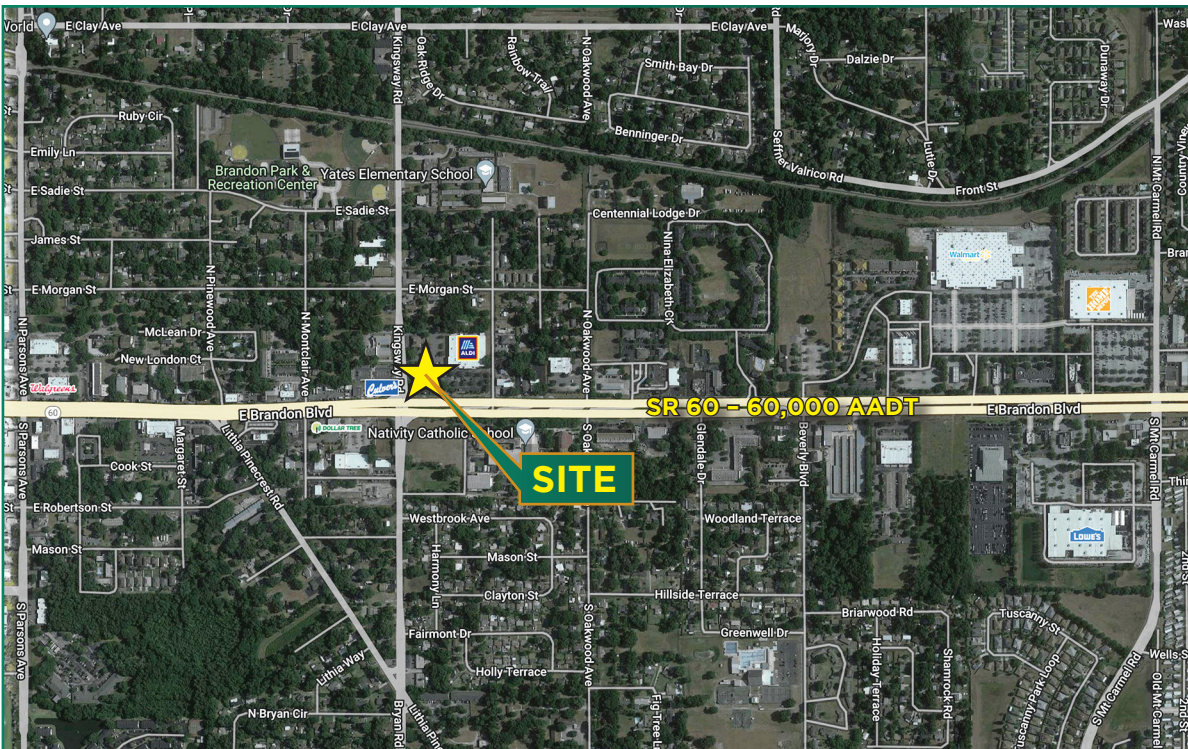
# FOR LEASE

606 E Brandon Blvd  
Brandon, FL 33511



## DEMOGRAPHICS

	1 mile	3 mile	5 mile
Population	11,402	98,600	215,044
Average HH Income	\$57,052	\$79,546	\$81,152
Median Age	37.5	38.5	37.6
Traffic – 60,000 AADT on SR 60			



## PROJECT/ MARKET HIGHLIGHTS

- Signalized intersection on Brandon Blvd at Kingsway Road
- 4,688 sf+/- building
- Excellent street visibility and direct access from Brandon Blvd
- Currently used for automotive services with 6 bays
- Shared pylon signage

FOR MORE INFORMATION CONTACT:

**Sandia Wasserman**  
sandia@floridaretailpartners.com

**Kathryn Brandewie**  
kathryn@floridaretailpartners.com

**813.251.3333**

2202 S. MacDill Avenue  
Tampa, FL 33629

PARTNER **XTEAM**  
RETAIL ADVISORS

# FOR LEASE

606 E Brandon Blvd  
Brandon, FL 33511

FOR MORE INFORMATION CONTACT:

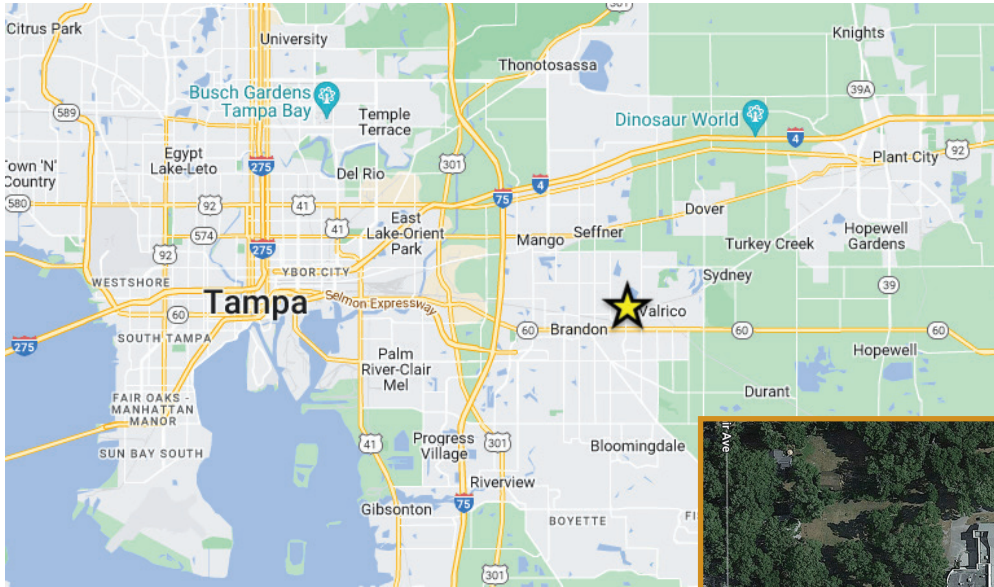
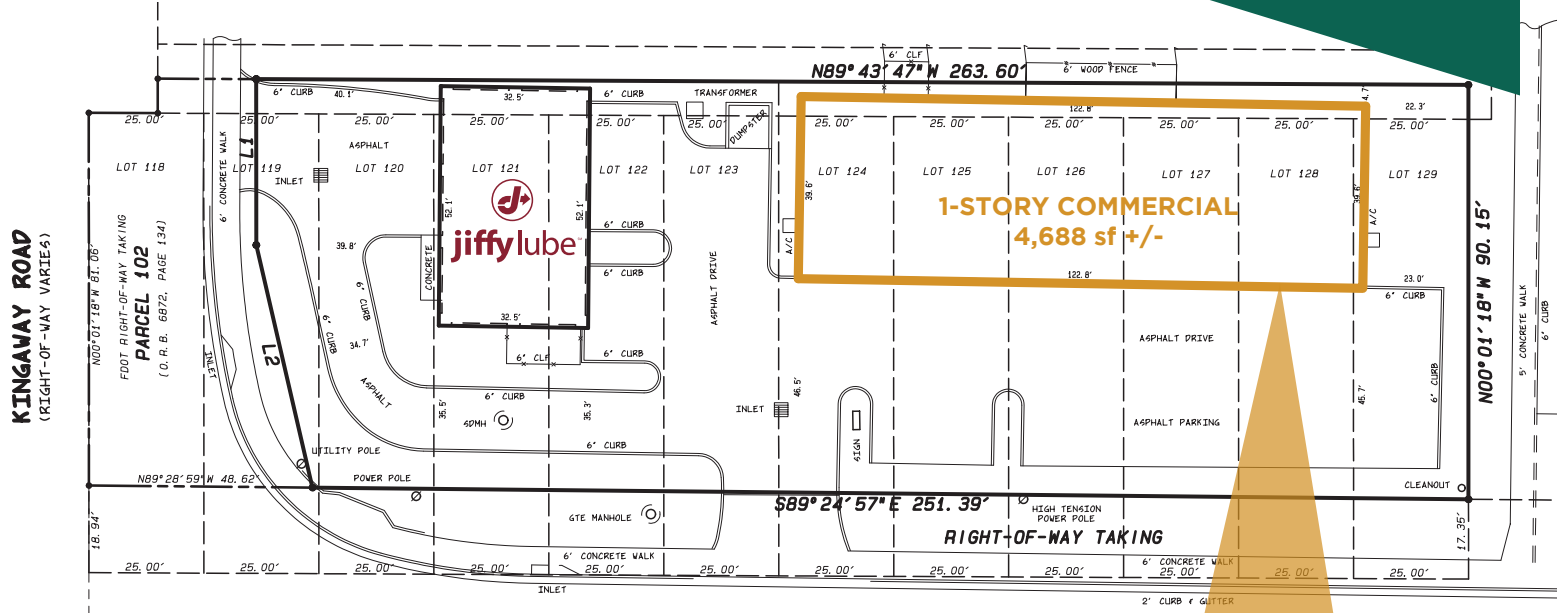
**Sandia Wasserman**

sandia@floridaretailpartners.com

**Kathryn Brandewie**

kathryn@floridaretailpartners.com

**813.251.3333**



**FLORIDA**  
**RETAIL PARTNERS**  
| Licensed Real Estate Broker |

**PARTNER XTEAM**  
RETAIL ADVISORS

2202 S. MacDill Avenue • Tampa, FL 33629

**813.251.3333**

**floridaretailpartners.com**