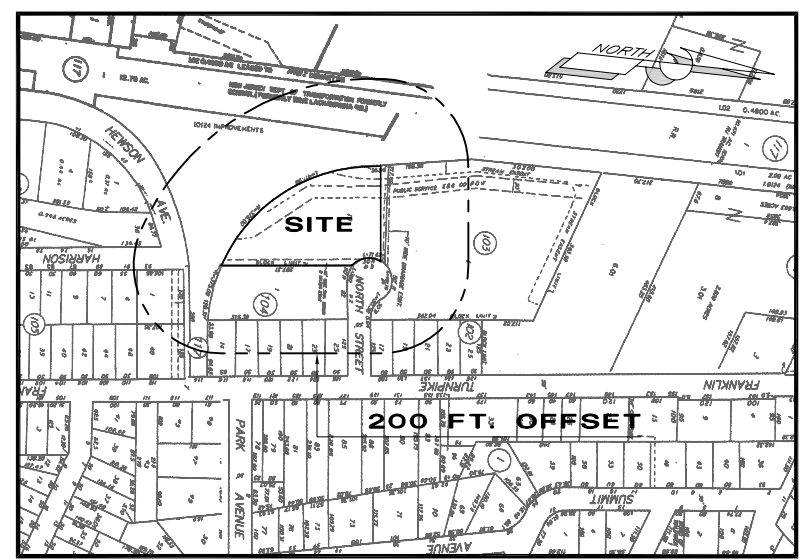


**SITE PLAN**  
(SCALE: 1 IN. = 20 FT.)



**LOCATION MAP**  
(SCALE: 1 IN. = 200 FT.)

**GENERAL NOTES**

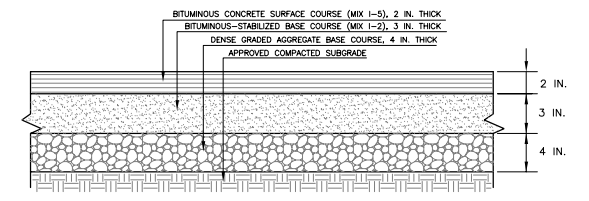
- TOPOGRAPHIC AND BOUNDARY INFORMATION BASED ON REFERENCE NUMBER 2.
- SURVEY DATUM PER REFERENCE NUMBER 2.
- THE CONTRACTOR SHALL BE RESPONSIBLE TO VERIFY ALL EXISTING CONDITIONS REPRESENTED ON THE PLANS. HE/SHE SHALL NOTIFY THE PROJECT ENGINEER IMMEDIATELY IF VARIATIONS ARE FOUND.
- ALL WORK SHALL BE SUBJECT TO INSPECTION BY AND APPROVAL OF THE MUNICIPAL ENGINEER. THE CONTRACTOR AND / OR OWNER SHALL BE RESPONSIBLE TO COORDINATE THE REQUIREMENTS OF THESE INSPECTIONS WITH THE MUNICIPAL ENGINEER PRIOR TO CONSTRUCTION.
- THE CONTRACTOR SHALL BE RESPONSIBLE TO COORDINATE ALL WORK WITH THE BOROUGH OF WALDWICK.
- EXISTING CONDITIONS (INCLUDING SPOT ELEVATIONS) ARE REPRESENTED WITH AN "ITALIC" FONT AND PROPOSED CONDITIONS (INCLUDING SPOT ELEVATIONS) ARE REPRESENTED WITH AN "UPRIGHT" FONT.
- THE CONTRACTOR SHALL COMPLY WITH THE NEW JERSEY ONE CALL REGULATIONS BY CALLING 1 (800) 272-1000 PRIOR TO THE COMMENCEMENT OF ANY EXCAVATION.
- ALL WORK SHALL BE CONSTRUCTED IN CONFORMANCE WITH THE LATEST APPLICABLE MUNICIPAL ORDINANCES.
- ALL FIELD ADJUSTMENTS AND / OR DEVIATIONS FROM THE APPROVED PROJECT DOCUMENTS / PLANS MUST BE APPROVED BY THE MUNICIPAL ENGINEER. FIELD ADJUSTMENTS AND / OR DEVIATIONS MADE WITHOUT THE APPROVAL OF THE MUNICIPAL ENGINEER ARE PERFORMED AT THE RISK OF THE OWNER AND / OR CONTRACTOR. THE OWNER / CONTRACTOR SHALL BE RESPONSIBLE TO SUBMIT THESE ADJUSTMENTS AND / OR DEVIATIONS TO THE MUNICIPALITY FOR APPROVAL.
- THE CONTRACTOR SHALL BE RESPONSIBLE TO COORDINATE WITH THE ADJACENT PROPERTY OWNERS FOR ANY WORK THAT MAY IMPACT THEIR PROPERTY PRIOR TO CONSTRUCTION.
- SURFACE AND SUBSURFACE ENVIRONMENTAL CONDITIONS (INCLUDING WETLANDS) WERE NOT EXAMINED OR CONSIDERED AS PART OF THESE PLANS.
- ALL PROPOSED "ADA" ACCESSIBLE CURB RAMPS SHALL BE CONSTRUCTED IN ACCORDANCE WITH THE CURRENT GOVERNING "AMERICAN WITH DISABILITIES ACT" RULES & REGULATIONS.
- ALL SIGNS (NOT INCLUDING BUILDING SIGNS), STRIPING AND PAVEMENT MARKINGS SHALL BE CONSTRUCTED IN ACCORDANCE WITH THE MOST RECENT ADDITION OF THE MANUAL ON UNIFORM TRAFFIC CONTROL DEVICES (INCLUDING COLOR & MATERIALS).
- UTILITIES EXIST WITHIN THE VICINITY OF THE PROJECT. THE CONTRACTOR SHALL BE RESPONSIBLE TO VERIFY THE LOCATION OF ANY UTILITY FACILITY WITHIN THE PROJECT LIMITS AND ITS VICINITY. THE CONTRACTOR SHALL NOTIFY THE PROJECT ENGINEER IMMEDIATELY OF ANY CONFLICTS WITH THE PROPOSED CONSTRUCTION.
- THE CONTRACTOR SHALL BE RESPONSIBLE TO COMPLY WITH THE CURRENT RULES & REGULATIONS OF THE GOVERNING SOIL CONSERVATION DISTRICT AS THEY APPLY TO THE PROPOSED CONSTRUCTION.

**REFERENCES**

- THE BOROUGH OF WALDWICK TAX MAP SHEET NUMBER 7.
- SURVEY ENTITLED: "SURVEY OF: 3 NORTH STREET BOROUGH OF WALDWICK BERGEN COUNTY, NEW JERSEY TAX MAP LOT 19, BLOCK 103", PREPARED BY DIAZ LAND SURVEYING, LLC, DATED MAY 29, 2008.

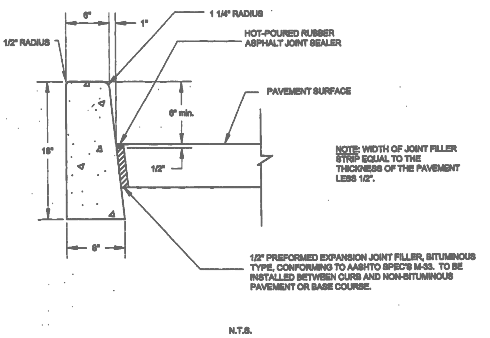
**PARKING SUMMARY**

EXISTING PARKING STALLS TO REMAIN	14
PROPOSED PARKING STALLS	38
TOTAL PARKING STALLS	52



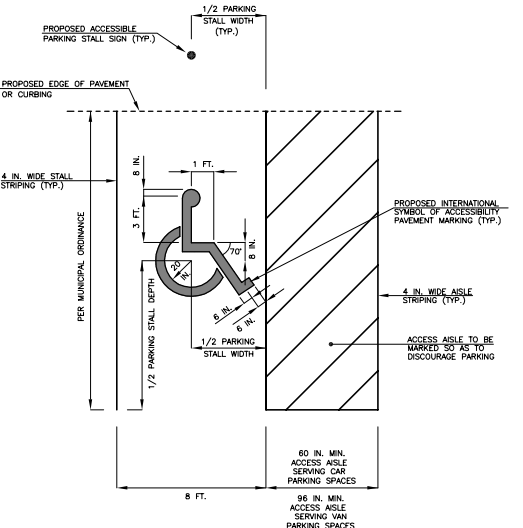
**TYPICAL SITE PAVEMENT SECTION**  
(N.T.S.)

- NOTES:
- SUBGRADE COMPACTION SHALL BE APPROVED BY THE MUNICIPAL ENGINEER.
  - AN ALTERNATE PAVEMENT SECTION MAY BE SUBSTITUTED BASED ON FIELD CONDITIONS, BASED ON CBR TESTING OR FIELD EVALUATION OF SOIL CLASSIFICATION THE CONTRACTOR AND / OR OWNER SHALL PROVIDE FIELD SUBGRADE CONDITIONS AND THE ALTERNATE PAVEMENT SECTION. TEST RESULTS AND THE ALTERNATE PAVEMENT SECTION SHALL BE REVIEWED & APPROVED BY THE MUNICIPAL ENGINEER PRIOR TO CONSTRUCTION.
  - CONSTRUCTION OF THE SUBGRADE COURSE AND THE PREPARATION OF THE SUBGRADE SHALL BE PERFORMED IN ACCORDANCE WITH SECTION 208 THE NJDOT STANDARD SPECIFICATIONS FOR ROAD AND BRIDGE CONSTRUCTION 1989 AND AMENDMENTS THERETO.
  - THE CONSTRUCTION OF THE DENSE GRADED AGGREGATE BASE COURSE SHALL BE PERFORMED IN ACCORDANCE WITH SECTION 301 OF THE NJDOT STANDARD SPECIFICATIONS FOR ROAD AND BRIDGE CONSTRUCTION 1989 AND AMENDMENTS THERETO.
  - THE CONSTRUCTION OF THE BITUMINOUS STABILIZED BASE COURSE SHALL BE PERFORMED IN ACCORDANCE WITH SECTION 304 OF THE NJDOT STANDARD SPECIFICATIONS FOR ROAD AND BRIDGE CONSTRUCTION 1989 AND AMENDMENTS THERETO.
  - THE CONSTRUCTION OF THE BITUMINOUS CONCRETE SURFACE COURSE SHALL BE PERFORMED IN ACCORDANCE WITH SECTION 404 OF THE NJDOT STANDARD SPECIFICATIONS FOR ROAD AND BRIDGE CONSTRUCTION 1989 AND AMENDMENTS THERETO.

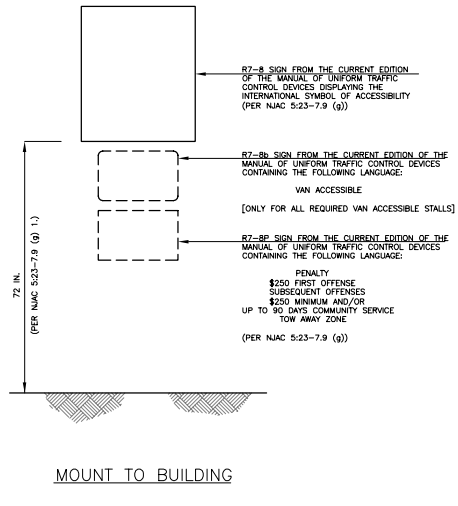


- NOTES:
- CONCRETE TO BE NJDOT CLASS "B" (AIR ENTRAINMENT).
  - TRANSVERSE JOINTS 1/2" WIDE SHALL BE INSTALLED IN THE CURB 2'-0" APART AND SHALL BE FILLED WITH PREPARED BITUMINOUS-IMPREGNATED FIBER JOINT FILLER, COMPLYING WITH THE REQUIREMENTS OF AASHTO M-218, RECESSED 1/4" FROM THE FRONT FACE AND TOP OF THE CURB.
  - DURABLE JOINTS (FORMED) SHALL BE INSTALLED MIDWAY BETWEEN EXPANSION JOINTS.

**CONCRETE VERTICAL CURB DETAIL**  
(N.T.S.)

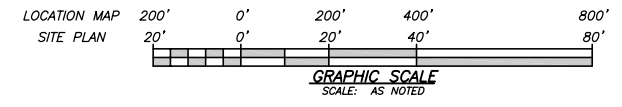


**AMERICANS WITH DISABILITIES ACT ACCESSIBLE PARKING STALL DETAIL**  
(N.T.S.)



**AMERICANS WITH DISABILITIES ACT ACCESSIBLE PARKING STALL SIGN DETAIL**  
(N.T.S.)

- NOTES:
- THE FOLLOWING SHALL BE IN ACCORDANCE WITH THE REQUIREMENTS OF THE MUNICIPAL ENGINEER:
    - STRIPING COLOR AND MATERIAL.
    - MARKING COLOR AND MATERIAL.
    - ACCESS ISLE PAVEMENT MARKING.



drawn by RR	checked by MC
MATTHEW G. CLARK	

DATE	REVISIONS
	SITE PLAN
	<b>3 NORTH STREET</b> BLOCK 103 - LOT 19 BOROUGH OF WALDWICK BERGEN COUNTY, NEW JERSEY

<b>MCB ENGINEERING ASSOCIATES, LLC</b>	P.O. BOX 588, 11 FURLER STREET TOWANA, NEW JERSEY 07511-0588	
	PHONE: (973) 812-6580 - FACSIMILE: (973) 812-6681 Email: mcb@mcbeo.com	
scale AS NOTED	date 05/15/2009	project no. 3153
N.J. PROFESSIONAL ENGINEER LICENSE No. 40394		sheet no. 1 OF 1

