

FOR LEASE

\$0.90/sf NNN (\$0.41)



3651 Foothill Blvd, Oakland, CA 94601

Corner unit | Perfect for eCommerce, warehousing, storage

± 3,253 square feet | More info www.3651FoothillBlvd.com



Tim Vi Tran, SIOR, CCIM

510 213 8883 | tim@ivycommercial.com

CalBRE# 01784630

HIGHLIGHTS

Building Size: ± 3,253 square feet

Lot Size: ± 3,639 square feet

Year Built: ± 1946

Loading: One grade level motorized roll up door, 13 ft W x 12 ft H

Restroom: 1 restroom in warehouse

Ceiling Height: ± 16 feet

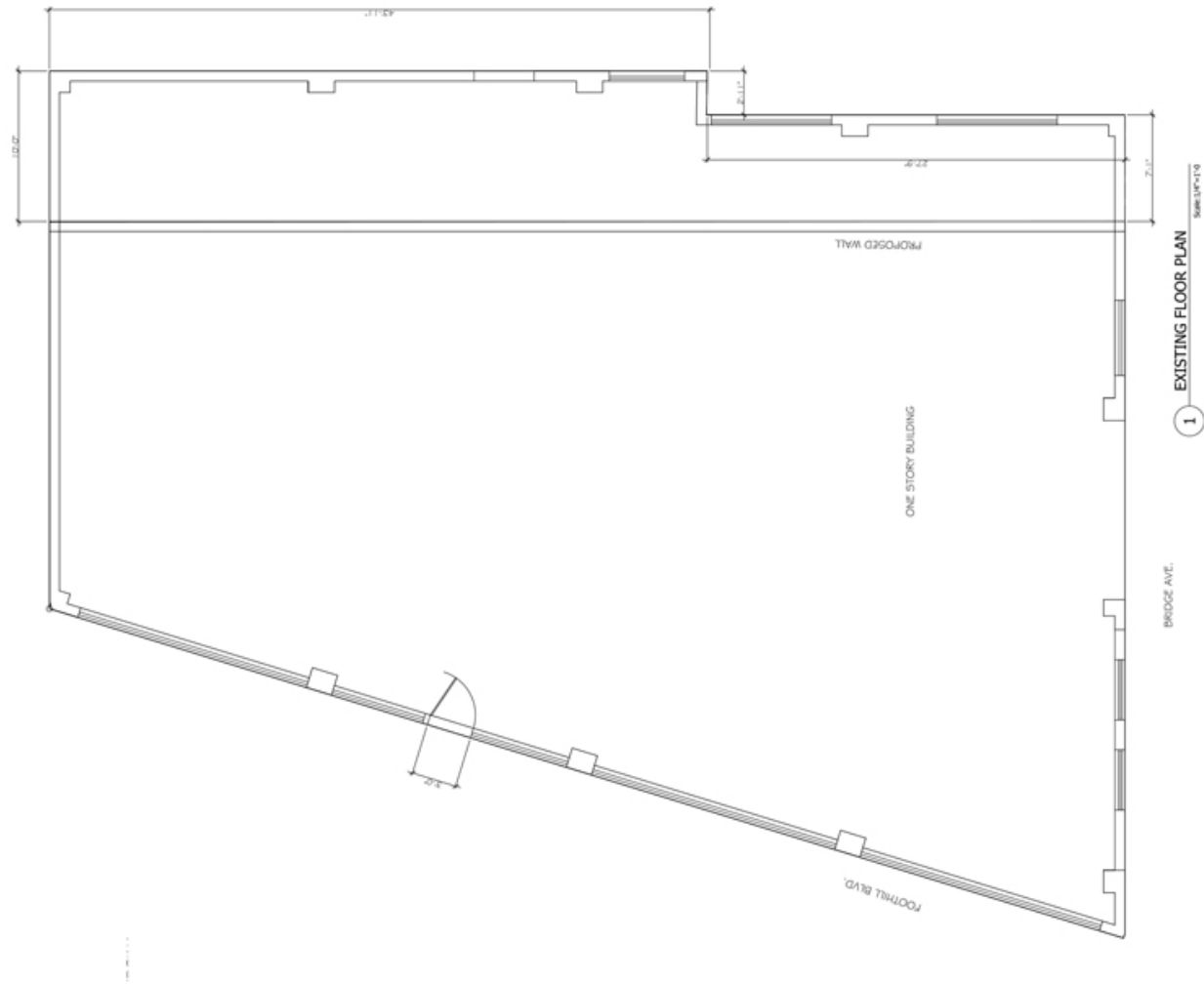
Parking: street parking available

Location: Easy convenient access to transportation, hotels, restaurants, etc

Accessibility: Close to OAK airport, Port of Oakland and freeways 880

Public Transportation: Walking distance to bus stops and Fruitvale BART Station

FLOOR PLAN



PHOTOS



DEMOGRAPHICS

KEY FACTS

57,955

Population



3.31

Average Household Size

32.6

Median Age

\$51,959

Median Household Income

ANNUAL LIFESTYLE SPENDING



\$1,891
Travel



\$65
Theatre/Operas/
Concerts



N/A
Movies/Museums/
Parks



\$44
Sports Events



\$6
Online Games

ANNUAL HOUSEHOLD SPENDING



\$1,890
Apparel &
Services



\$4,728
Groceries



\$144
Computers &
Hardware



\$4,363
Health Care



\$3,392
Eating Out

HOUSING STATS



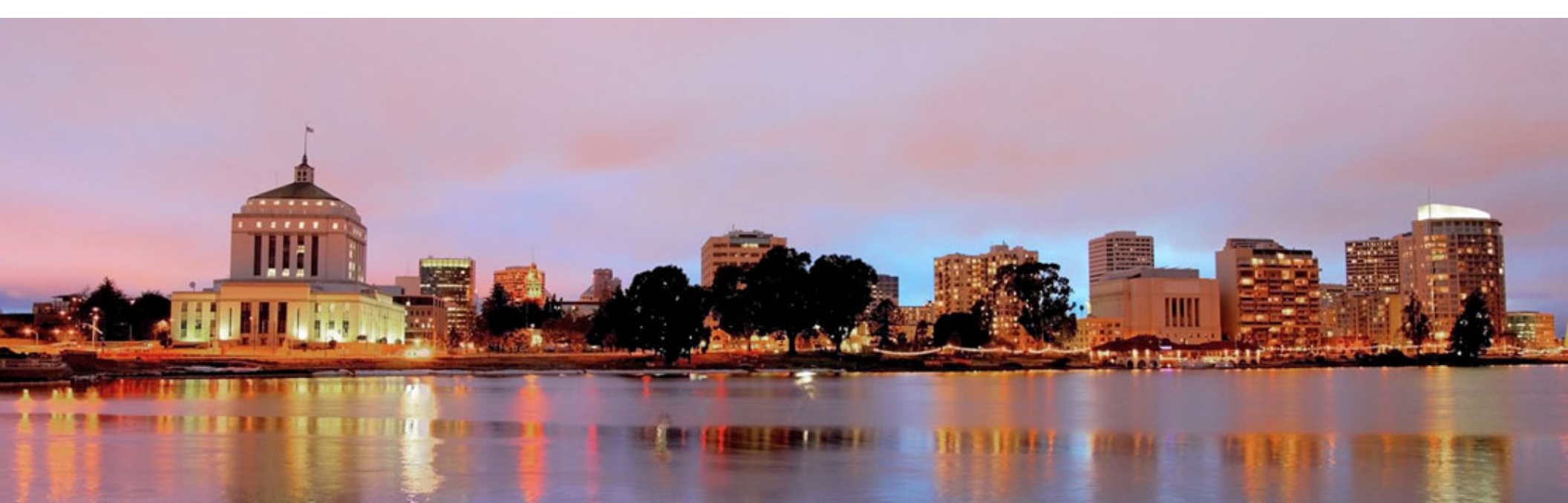
\$573,353
Median Home Value



\$6,953
Average Spent on
Mortgage & Basics



\$1,175
Median Contract
Rent



[WWW.365 | FOOTHILLBLVD.COM](http://WWW.365FOOTHILLBLVD.COM)

Contact Exclusive Agents for Details & Tours

Tim Vi Tran, SIOR, CCIM

tim@ivycommercial.com

www.ivycommercial.com

510 213 8883

39488 Stevenson Place, Suite 100

Fremont, CA 94539

CA DRE #01526630