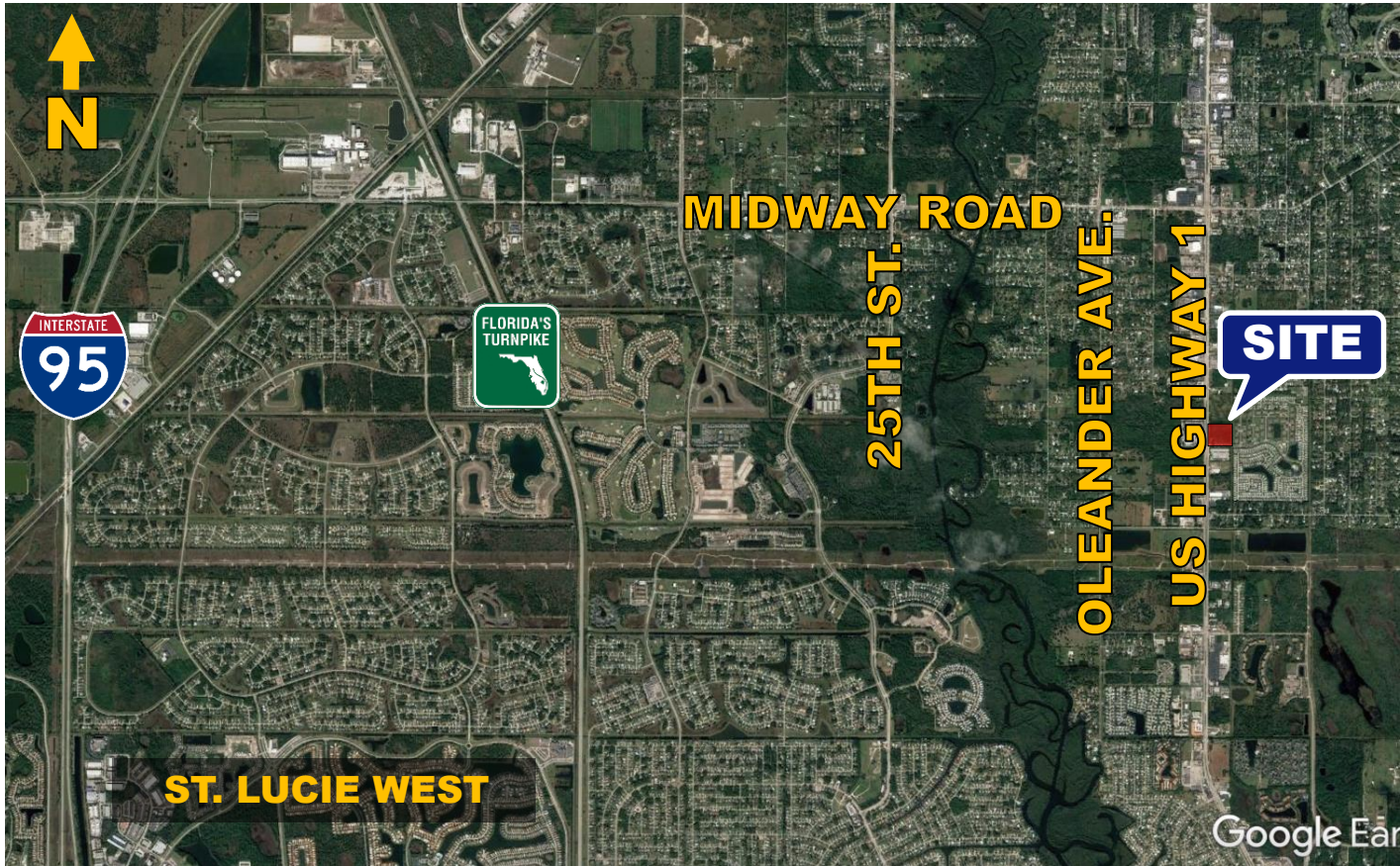


# BANK OWNED DEVELOPMENT LAND

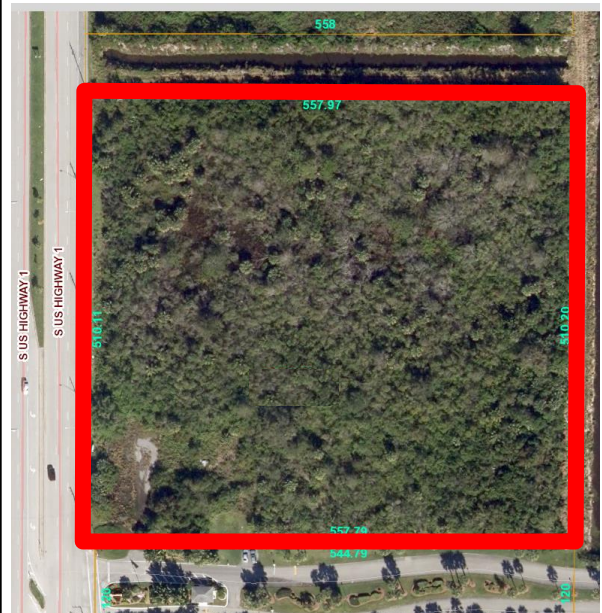
±6.5 Acre Corner Site on US-1 • Fort Pierce • FL



## PROPERTY HIGHLIGHTS

- ±6.53 acres of General Commercial land fronting US Highway 1 in Unincorporated St. Lucie County
- Great mixed-use location surrounded by residential development, car dealerships, self storage, retail and more.
- Situated just a few miles north of the densely populated St. Lucie West and Tradition DRIs
- Easy access to the site via I-95 at Midway Road
- Population of over ±100,000 residents in a 5-mile radius around the property
- PCN: 3403-502-0338-000-5
- Offered at \$400,000.00

## PARCEL BOUNDARY MAP



Thomas R. Gibson, Broker  
561.776.9300  
trg@assetspecialists.com



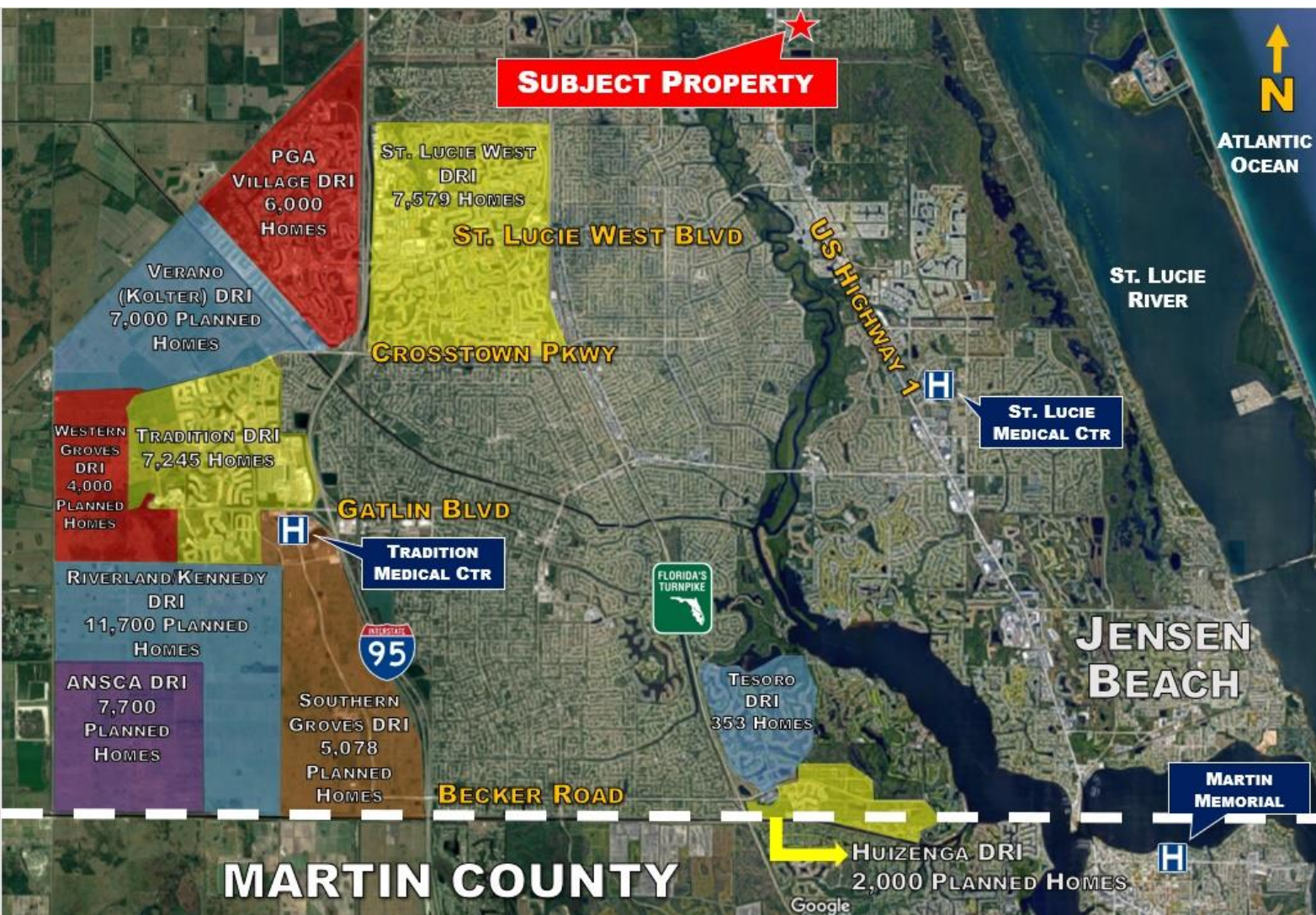
ASSET  
SPECIALISTS, INC.

Asset Specialists, Inc.  
3710 Buckeye Street • Suite 100  
Palm Beach Gardens, FL 33410



# AREA MAP

## Surrounding Master-Planned Communities



**A S S E T**

**SPECIALISTS, INC.**

Commercial Real Estate Services

3710 Buckeye Street • Suite 100 • Palm Beach Gardens • FL • 33410  
Thomas R. Gibson, Broker • 561.776.9300 • trg@assetspecialists.com  
www.AssetSpecialists.com