



## Sugar Land Office Condominiums

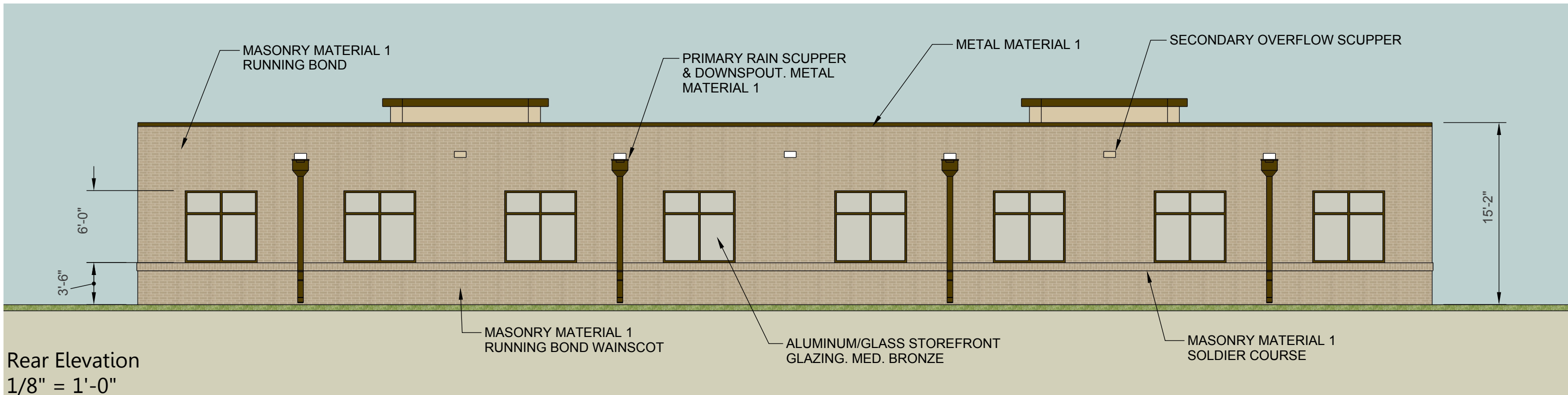
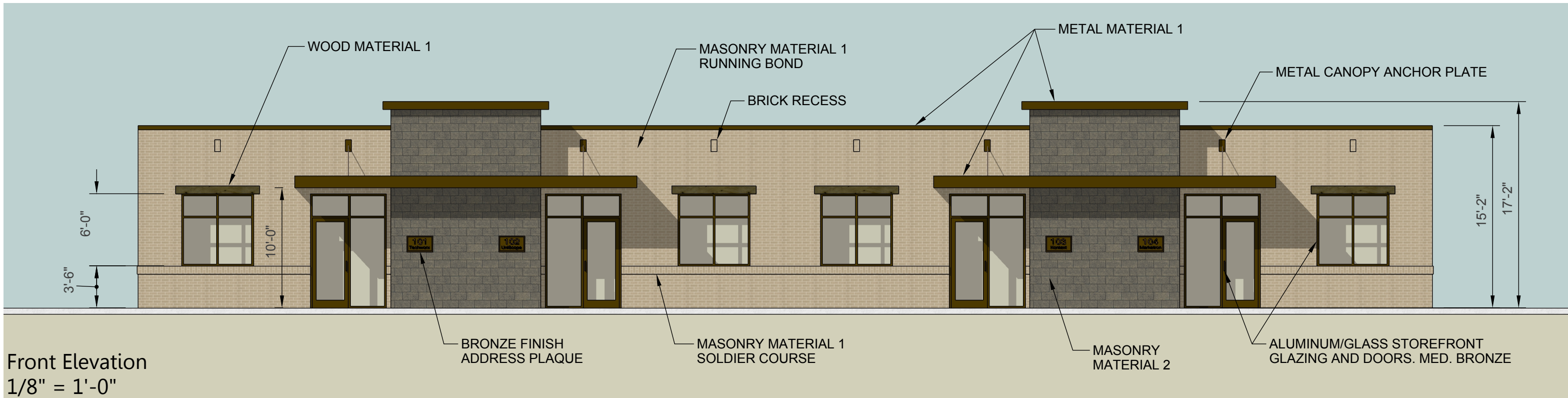
Sugar Land Business Park  
Phase 1 Submittal  
14 March, 2017

**SLOC, LLC**

**HARRELL**  
ARCHITECTS, LP

9575 Katy Freeway  
Suite 200  
Houston, Texas 77024





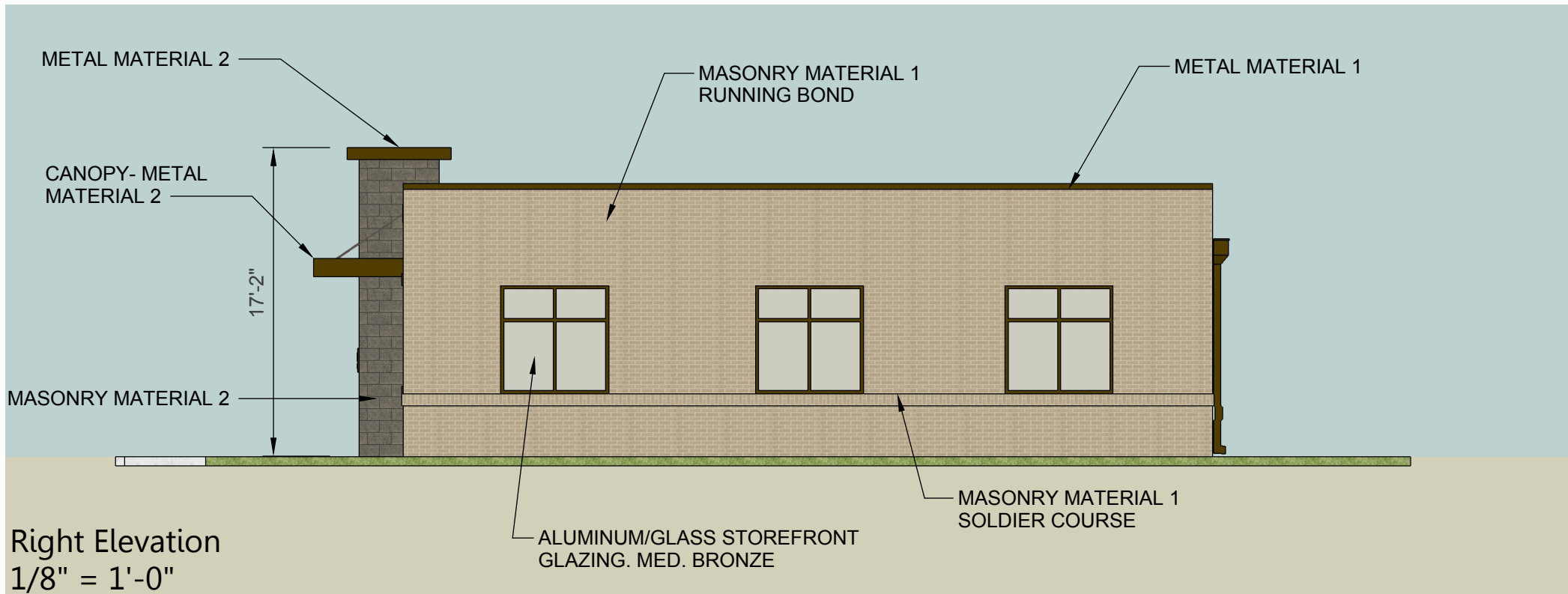
## Sugar Land Office Condominiums

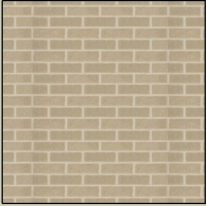

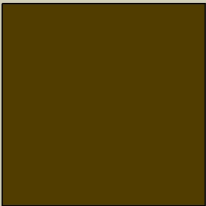

**SLOC, LLC**

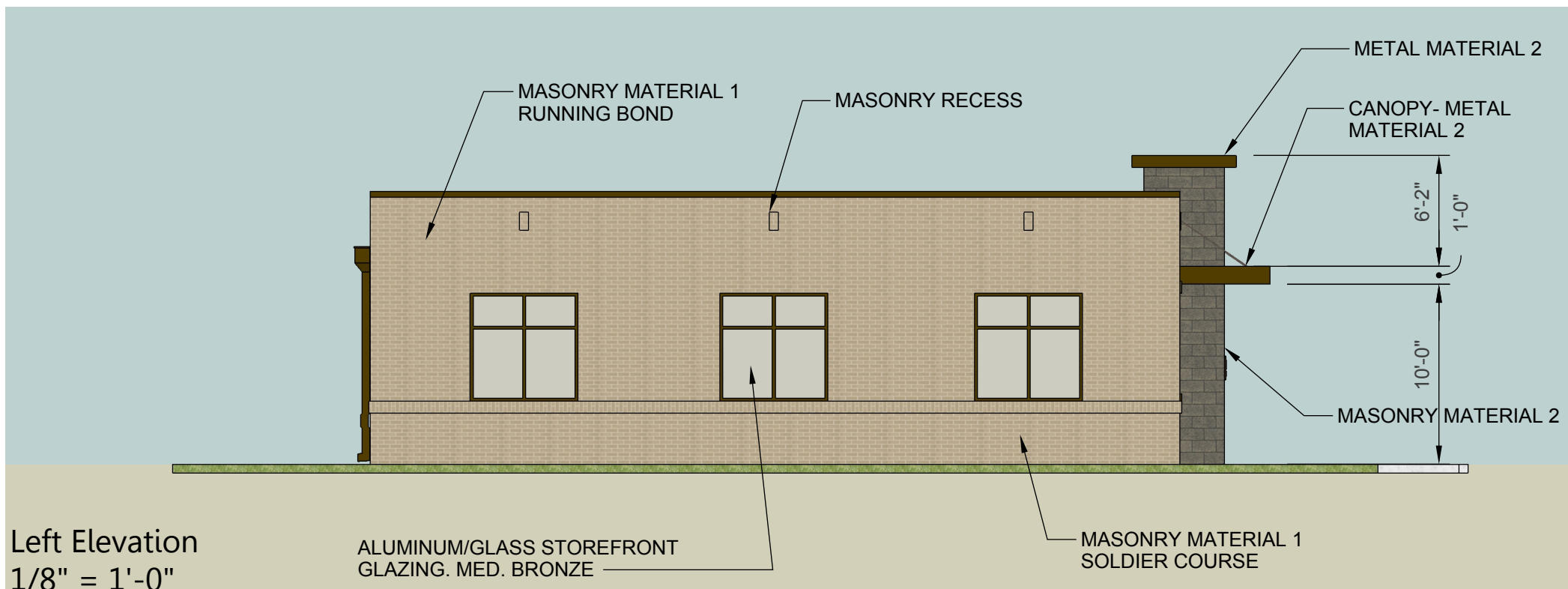
Sugar Land Business Park  
Phase 1 Submittal  
14 March, 2017

**HARRELL**  
ARCHITECTS, LP

9575 Katy Freeway  
Suite 200  
Houston, Texas 77024



	<b>MASONRY MATERIAL 1</b>	<b>BELDEN MODULAR BRICK TUMBLEWEED VELOUR 1</b>
	<b>MASONRY MATERIAL 2</b>	<b>HEADWATERS CONC. 8"x4"x16" GROUND FACE COLOR: BURNT UMBER</b>
	<b>METAL MATERIAL 1</b>	<b>BERRIDGE METALS MEDIUM BRONZE</b>
	<b>WOOD MATERIAL 1</b>	<b>WESTERN RED CEDAR ROUGH-SAWN TIMBER- 4"x 8" STAINED</b>



## Sugar Land Office Condominiums

**SLOC, LLC**

Sugar Land Business Park  
Phase 1 Submittal  
14 March, 2017



9575 Katy Freeway  
Suite 200  
Houston, Texas 77024