

Lakeline Center

SEC Lakeline & Cypress Creek & Little Elm Trl - Cedar Park



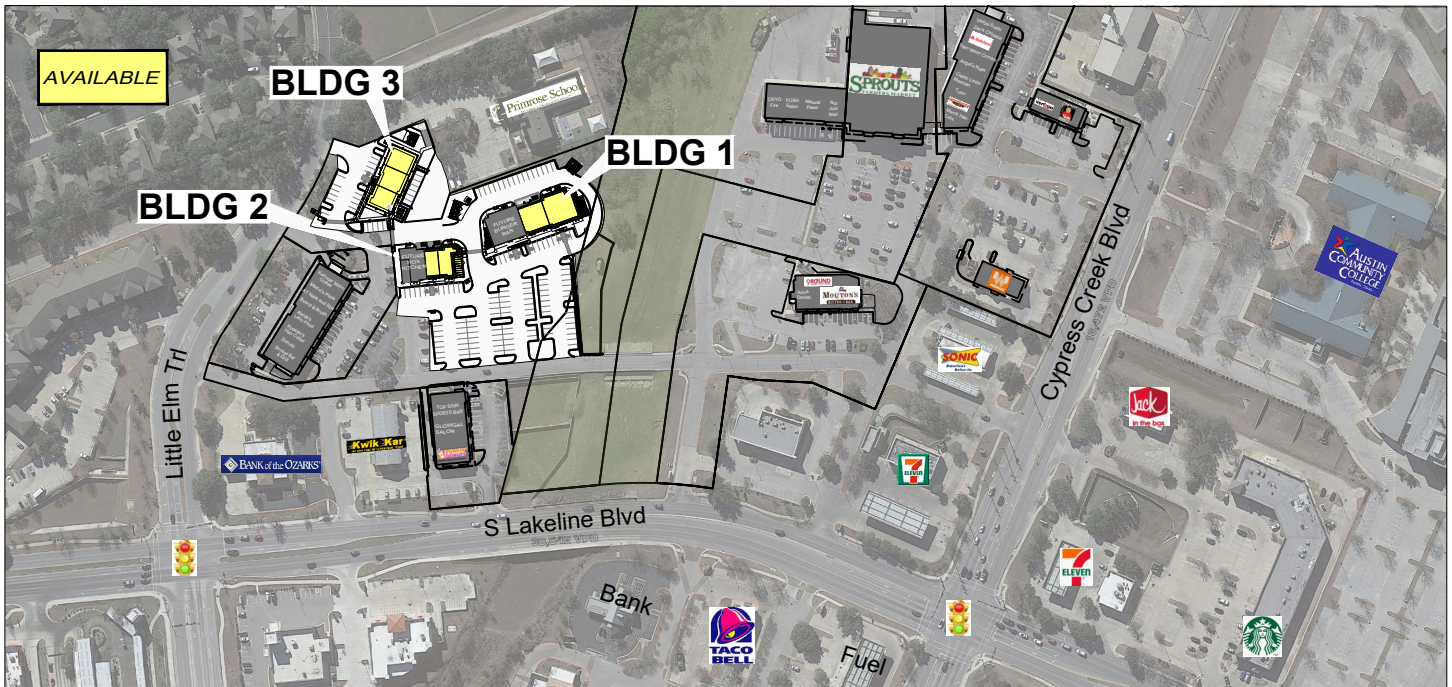
ADDRESS: 2005 & 2015 Little Elm Trail, Cedar Park

AVAILABLE SPACE:

- Building 1 5,847 Sq.Ft.
- Building 2 3,111 Sq.Ft.
- Building 3 5,558 Sq.Ft.

RENT:

NNN



Contact:
 Marc Currey (512) 426-4142
 MCurrey@CentresSouthwest.com
 Zeke Currey (512) 587-2989
 Zeke.Currey@CentresSouthwest.com

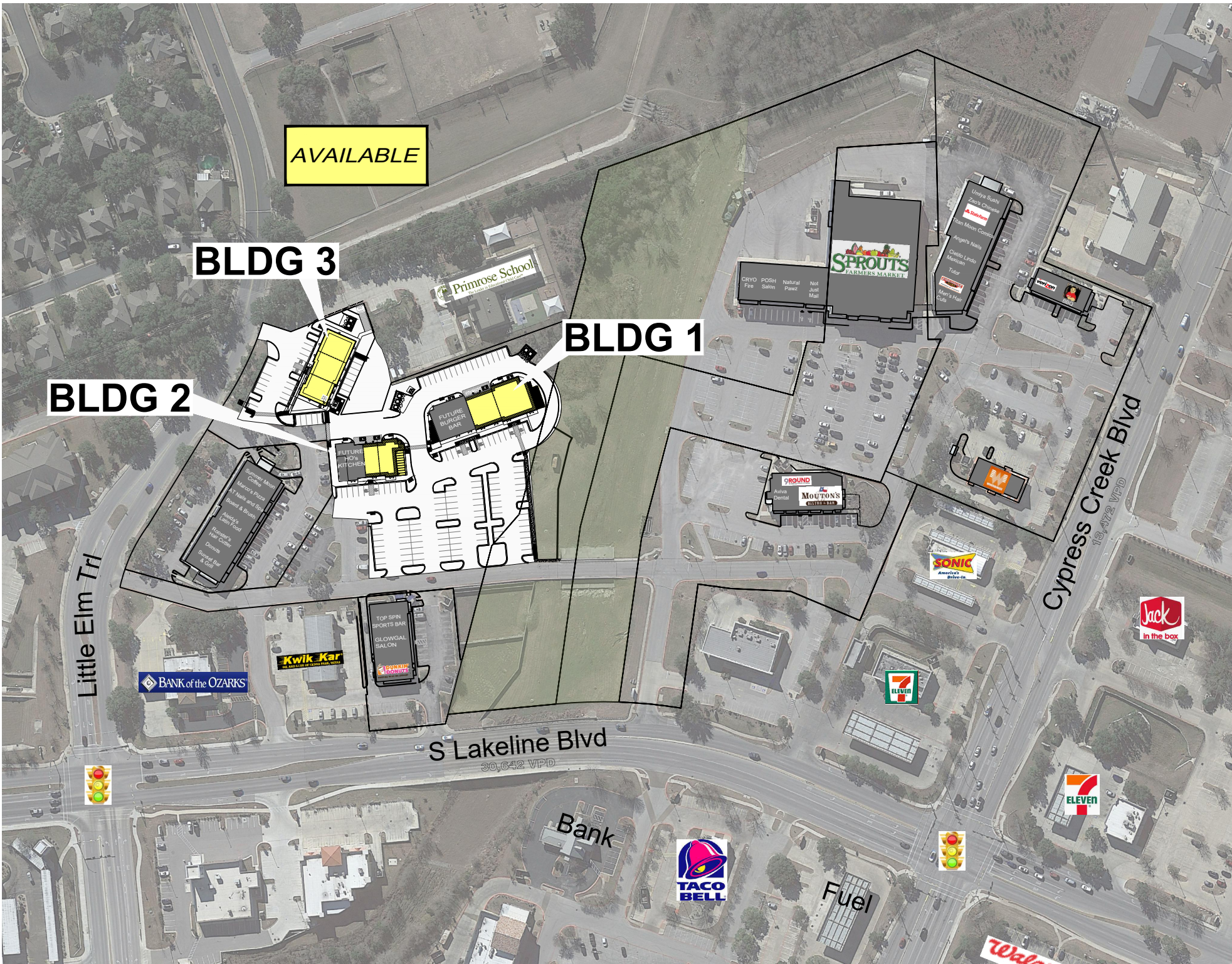
DEMOGRAPHICS:	1 Mile	3 Mile	5 Mile
Population	17,072	94,015	213,002
Households	6,489	35,433	82,811
Avg. H.H. Income	\$93,776	\$104,290	\$104,000

AVAILABLE

BLDG 3

BLDG 2

BLDG 1



Little Elm Trl

S Lakeline Blvd
30,642 VPD

Cypress Creek Blvd
18,472 VPD

Primrose School

SPROUTS FARMERS MARKET

GROUND MOUTONS CATERERS

SONIC Drive-Ins

7-ELEVEN

Jack in the box

7-ELEVEN

TACO BELL

Fuel

WALMART

BANK of the OZARKS

Kwik-Kar

TOP SPIN SPORTS BAR
GLOWGAL SALON

FUTURE BURGER BAR

FUTURE HO'S KITCHEN

Summer Moon Cafe
Mason's Pizzeria
A Hair and Styling
Barber & Beauty
Rogers's Hair Care
Dennis Sweet Bar & Grill

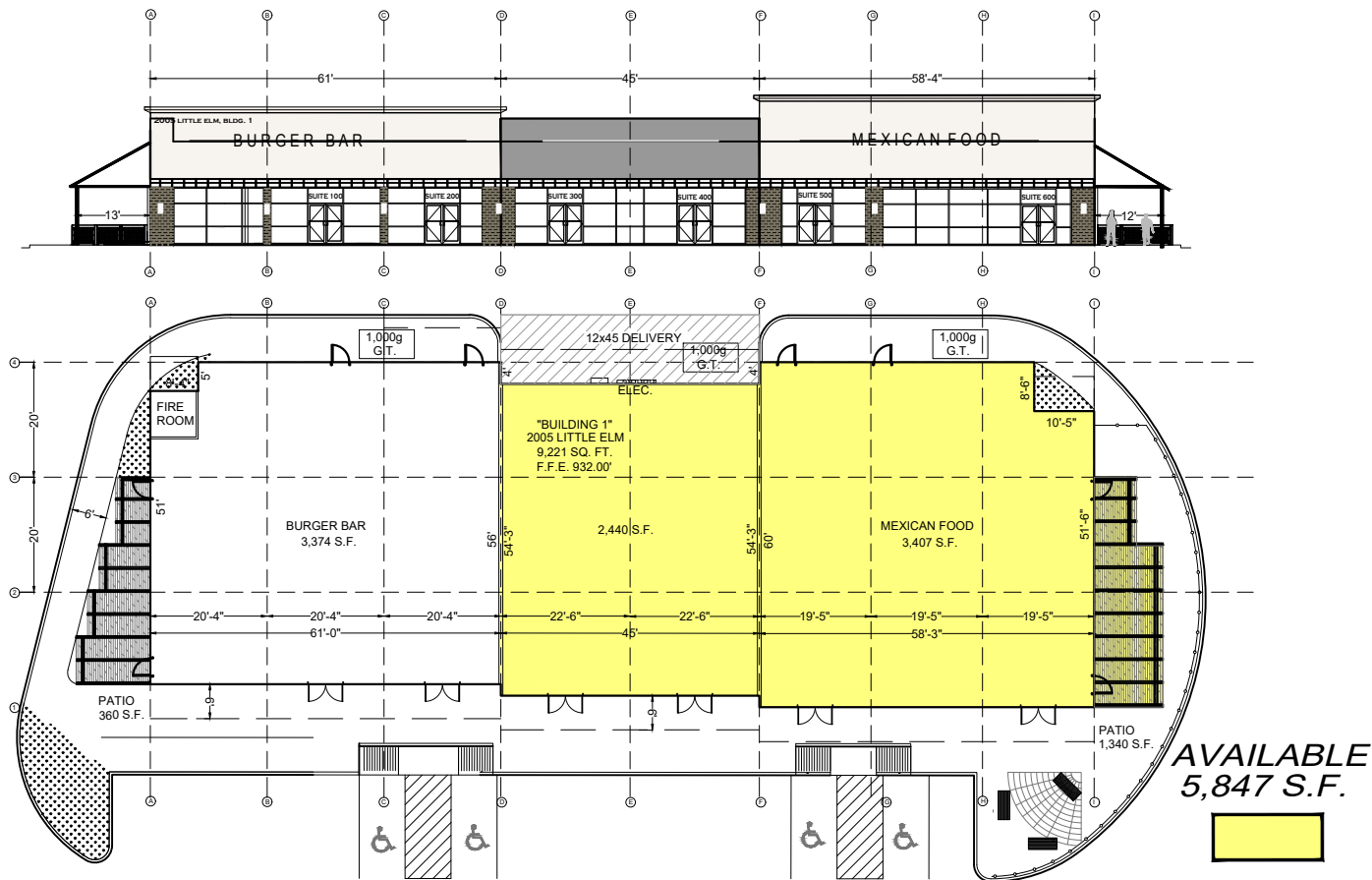
CRYO Fire Salon
POSH Natural Hair
Not Just Mail

Umyra Bank
Zoo's Chinese
Team Moon Comics
Angie's Nails
Cristo Lindo Mexican
Tutor
Men's Hair Club



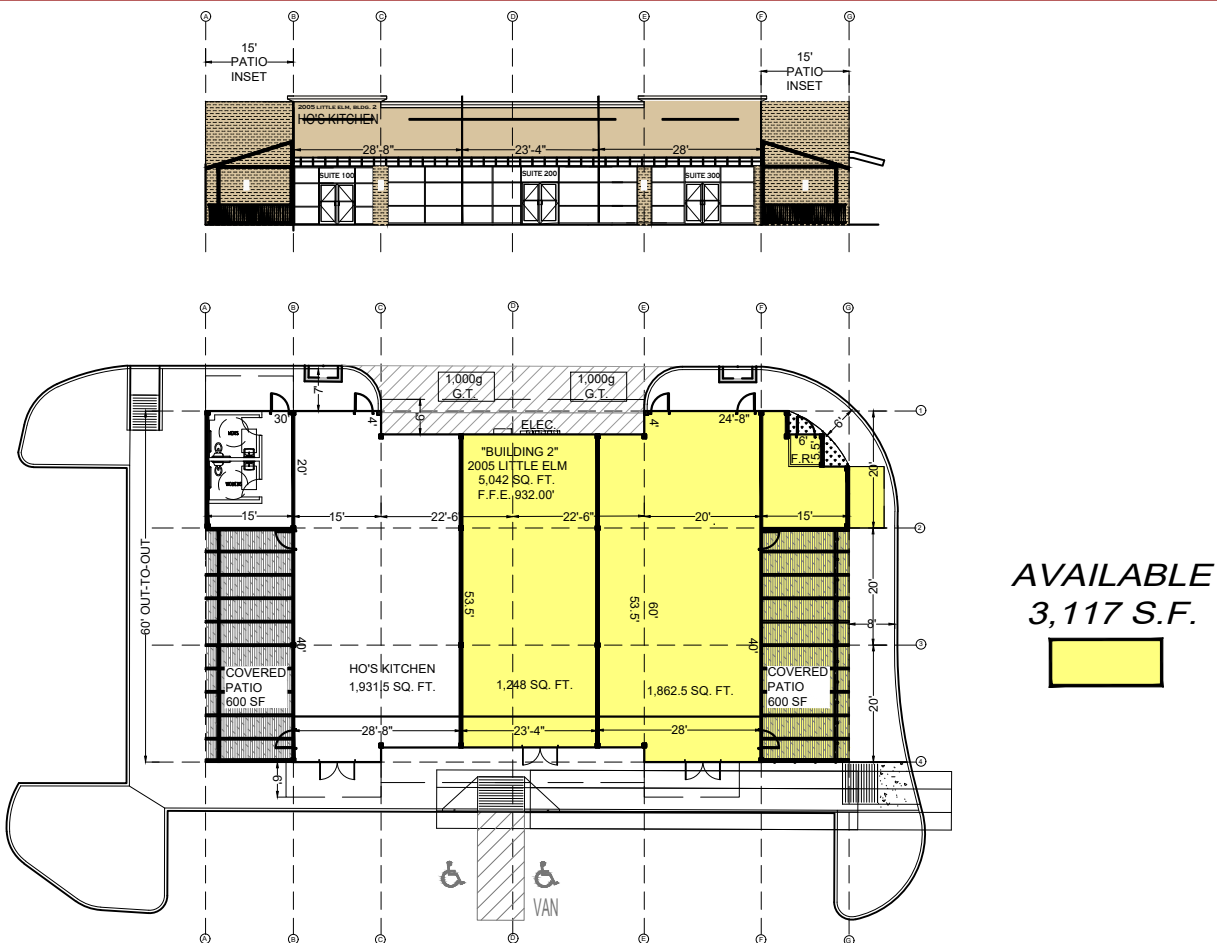
LAKELINE CENTER - BUILDING 1

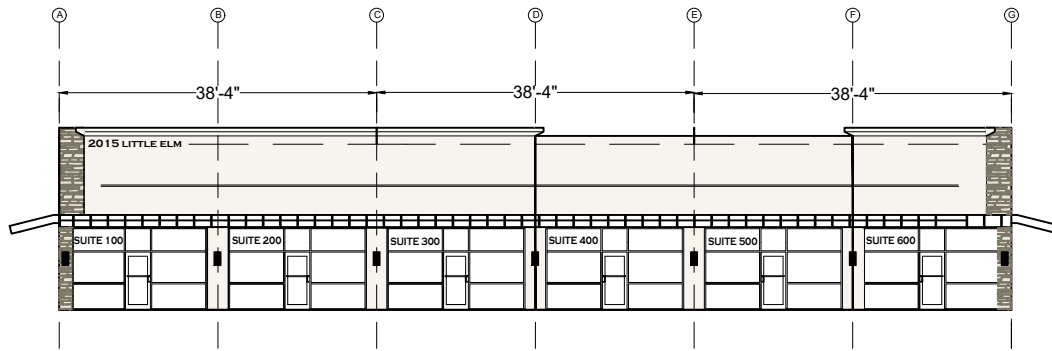
2005 Little Elm Trail



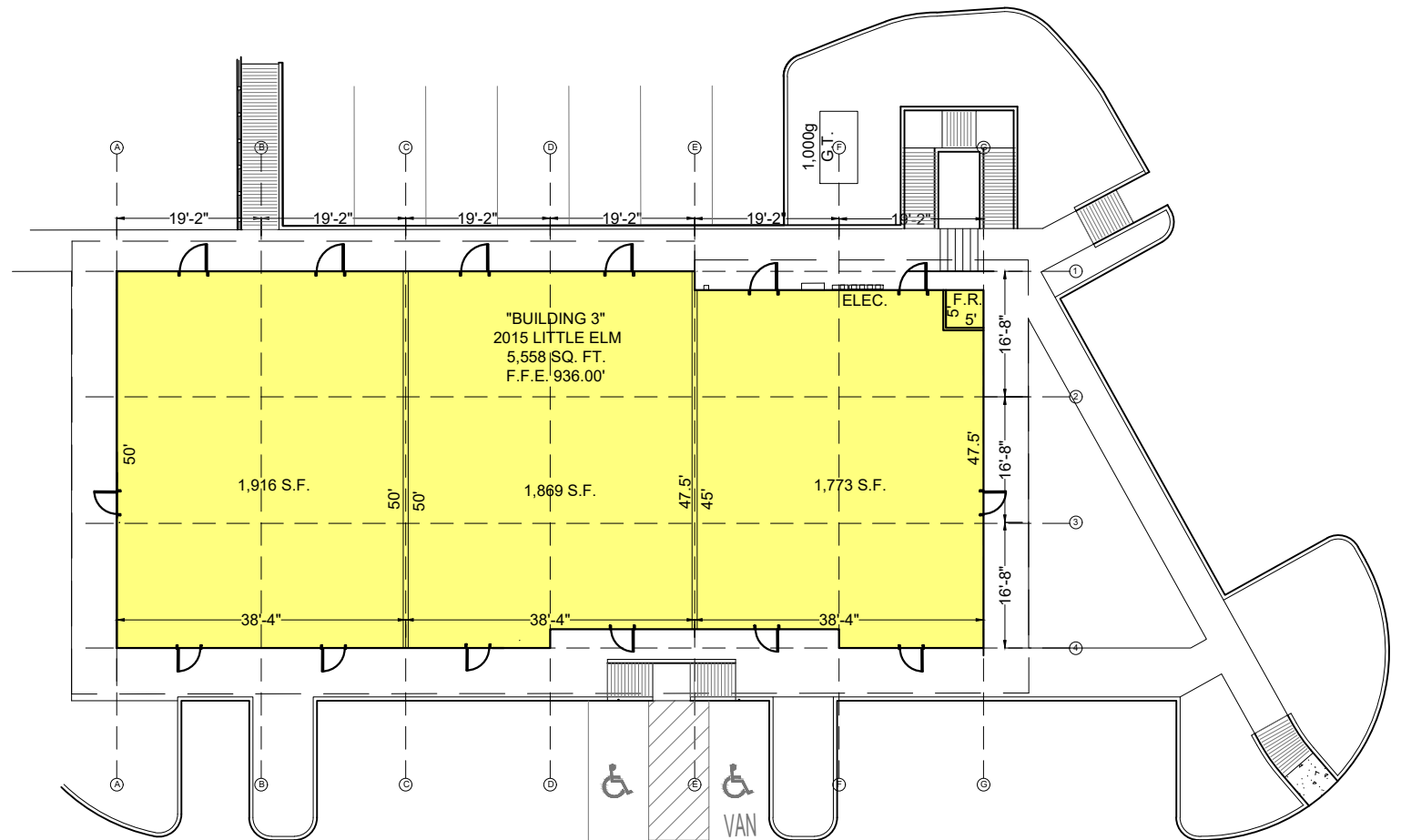
LAKELINE CENTER - BUILDING 2

2005 Little Elm Trail





**AVAILABLE
5,558 S.F.**



LAKELINE CENTER - BUILDING 3

2015 Little Elm Trail