



FOR SUBLEASE: **±23,500 SF**

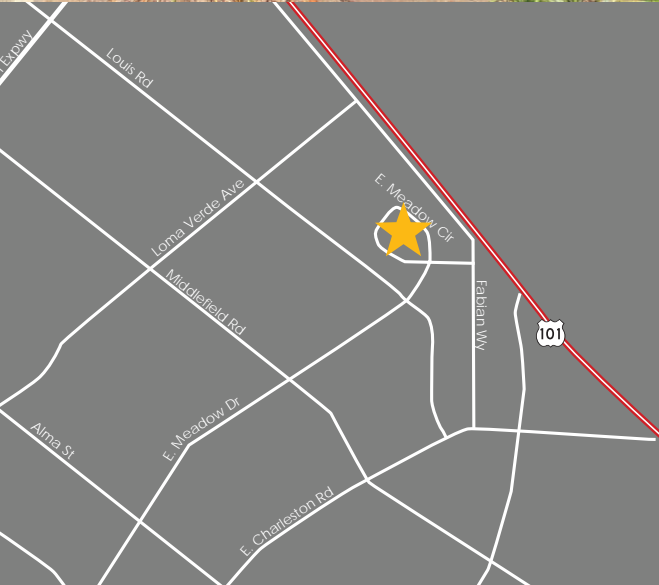
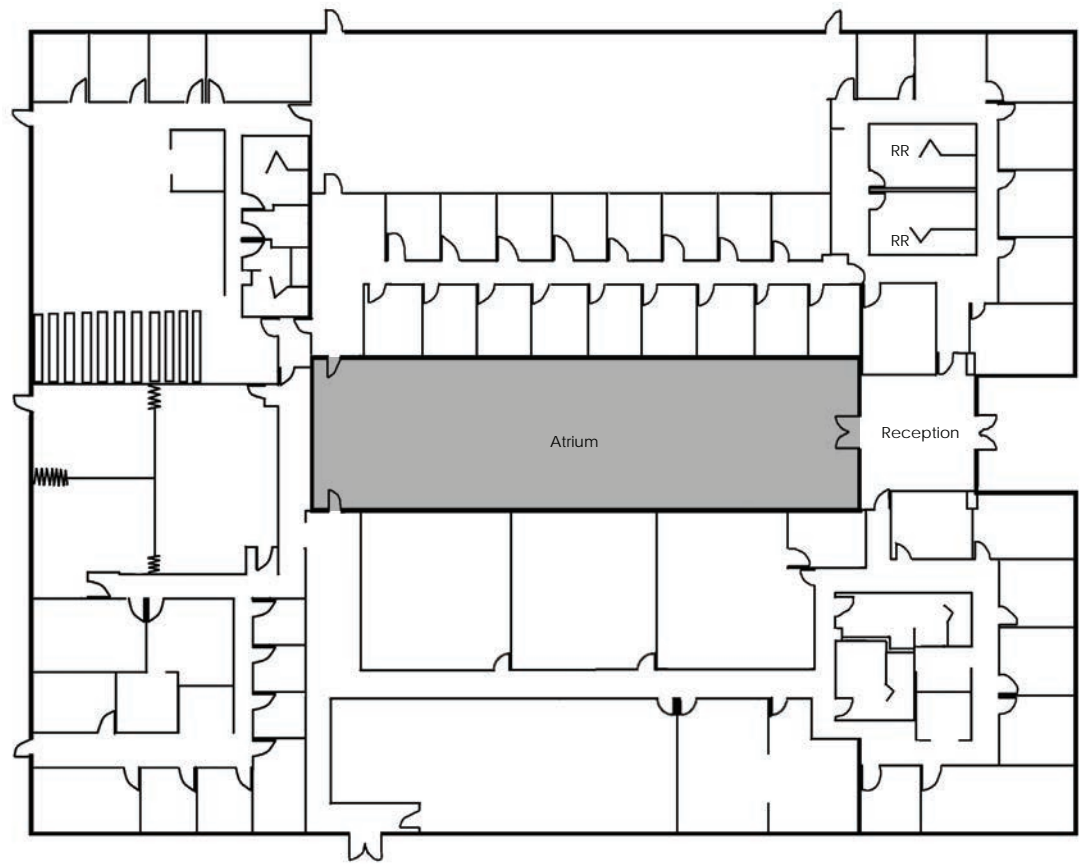
1069
E. MEADOW CIRCLE
PALO ALTO, CALIFORNIA

AUSTIN O'SUCH 650.688.8503 austin.osuch@ngkf.com CA RE License #02064631

DAVID O'SUCH 650.473.4761 dosuch@ngkf.com CA RE License #01033820

245 Lytton Avenue, Suite 150, Palo Alto, CA 94301

The distributor of this communication is performing acts for which a real estate license is required. The information contained herein has been obtained from sources deemed reliable but has not been verified and no guarantee, warranty or representation, either express or implied, is made with respect to such information. Terms of sale or lease and availability are subject to change or withdrawal without notice. 19-1148.04/20



- » Full Building Opportunity ±23,500 SF
- Divisible to ±8,000 SF
- » \$2.50 NNN
- » Mix of Open Office and Private Offices
- » LED: April 30, 2023
- » Private Atrium

- » Zoning: ROLM (Research, Office, Limited Manufacturing)
- » Great Signage
- » 3.3/1000 Parking
- » Contact Agents to Tour

069

E. MEADOW CIRCLE
PALO ALTO, CALIFORNIA

AUSTIN O'SUCH 650.688.8503 austin.osuch@ngkf.com CA RE License #02064631
DAVID O'SUCH 650.473.4761 dosuch@ngkf.com CA RE License #01033820