

FLEX/INDUSTRIAL FOR SALE/LEASE



\$1,975,000 (\$99.56 PSF)

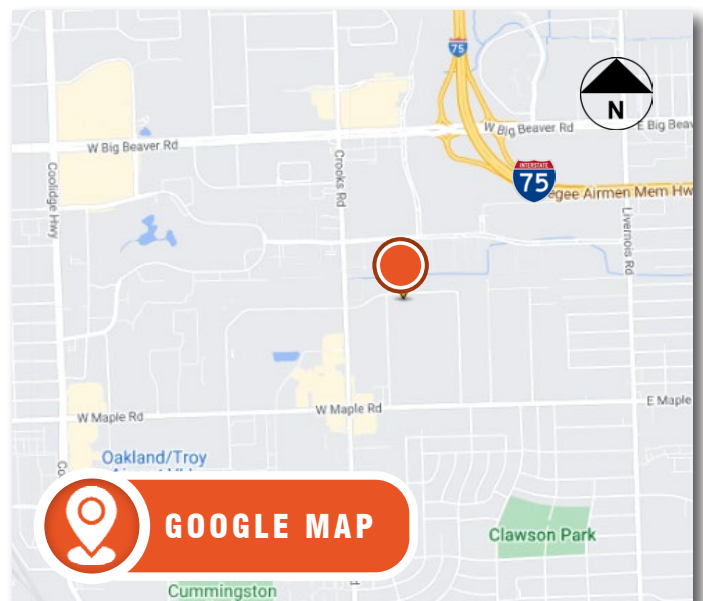
1179 Maplelawn, Troy, Michigan

SALE HIGHLIGHTS

- Recently Renovated
- **High-End Finishes with Glass Doors & Walls**
- Located In High Occupancy Flex Market

BUILDING AMENITIES

- 19,838 SF Flex/R&D/Light Industrial Building
- **Fully Air-Conditioned**
- 1 Grade Level Door
- 18-20' Ceilings
- Easy Access to I-75 & Connecting Freeways
- Lease Rate: \$8.95 NNN + util



HAYMAN COMPANY 

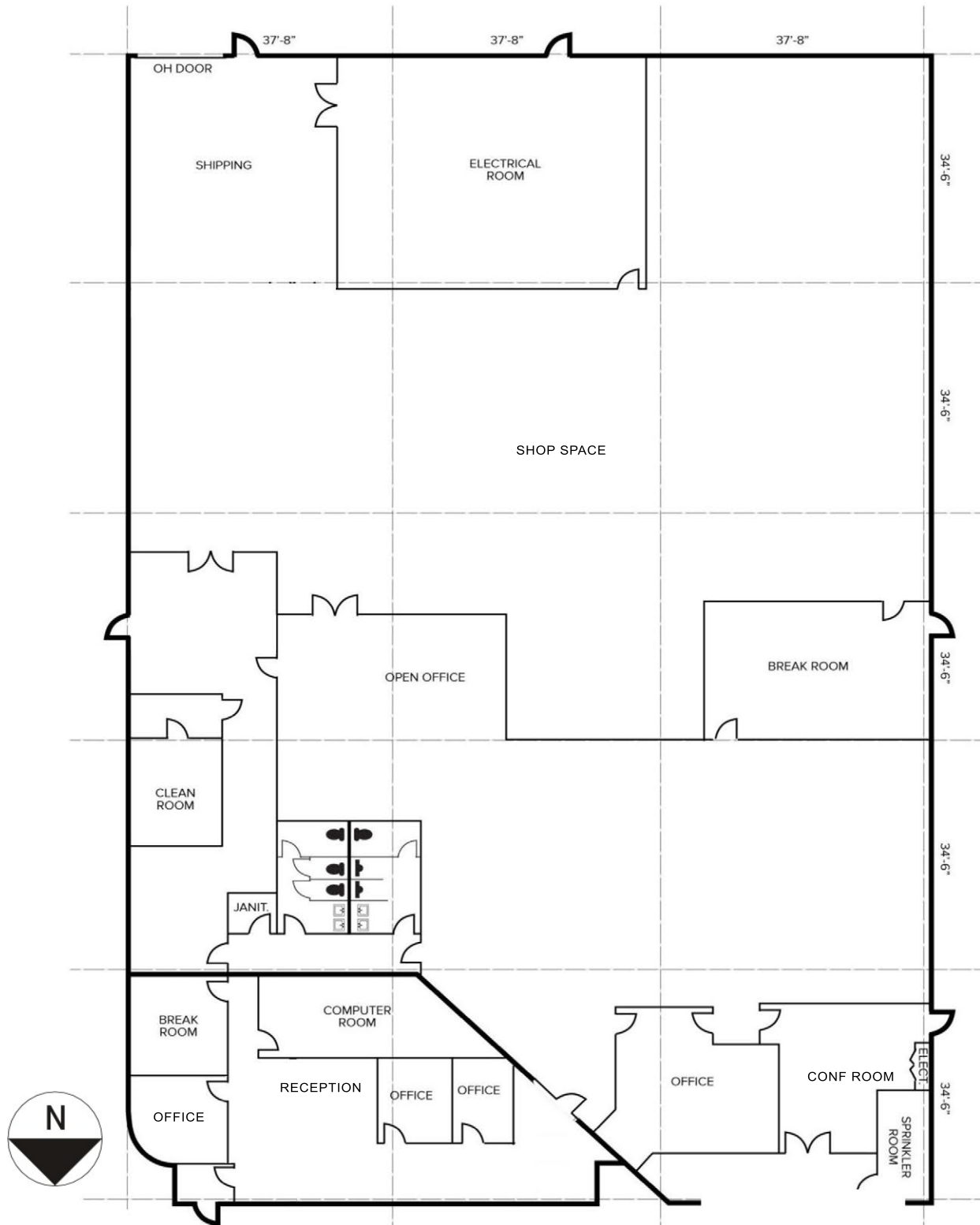
29100 Northwestern Hwy, Suite 410
Southfield, MI 48034
248.879.7777
www.haymancompany.com

Lawrence Randazzo
248.879.4739
lrandozzo@haymanco.com

Bill Basirico
248.879.4721
bbasirico@haymanco.com

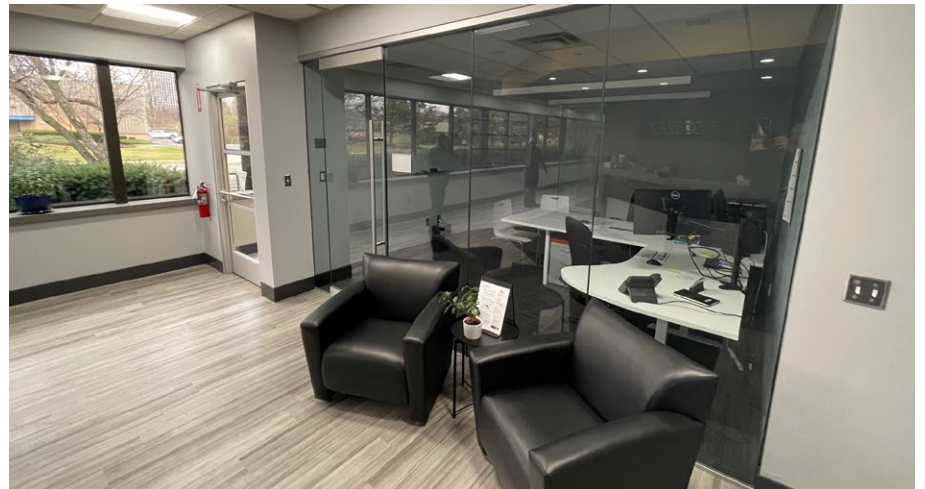
FLOOR PLAN

1179 Maplelawn, Troy, Michigan



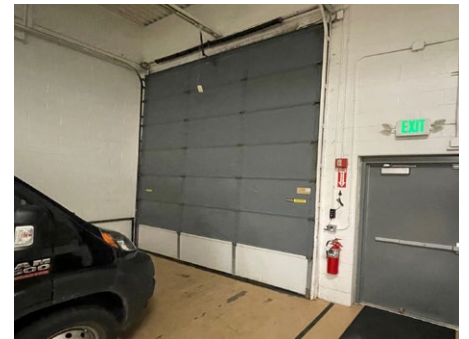
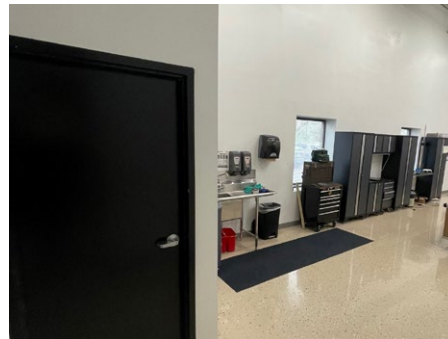
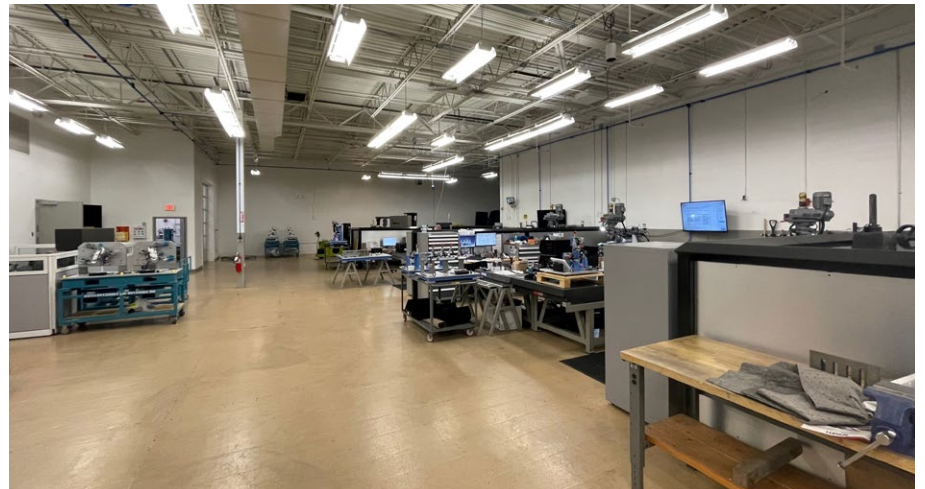
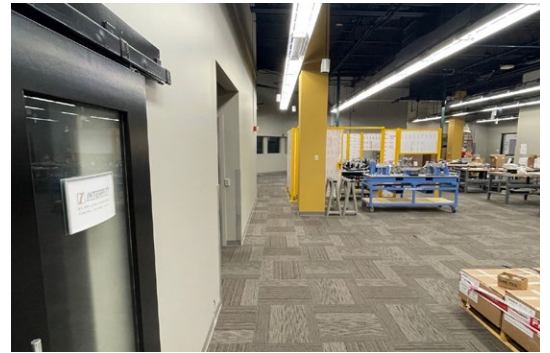
PICTURES

1179 Maplawn, Troy, Michigan



PICTURES

1179 Maplawn, Troy, Michigan



HAYMAN COMPANY 

29100 Northwestern Hwy, Suite 410
Southfield, MI 48034

248.879.7777
www.haymancompany.com

SITE PLAN

1179 Maplawn, Troy, Michigan

