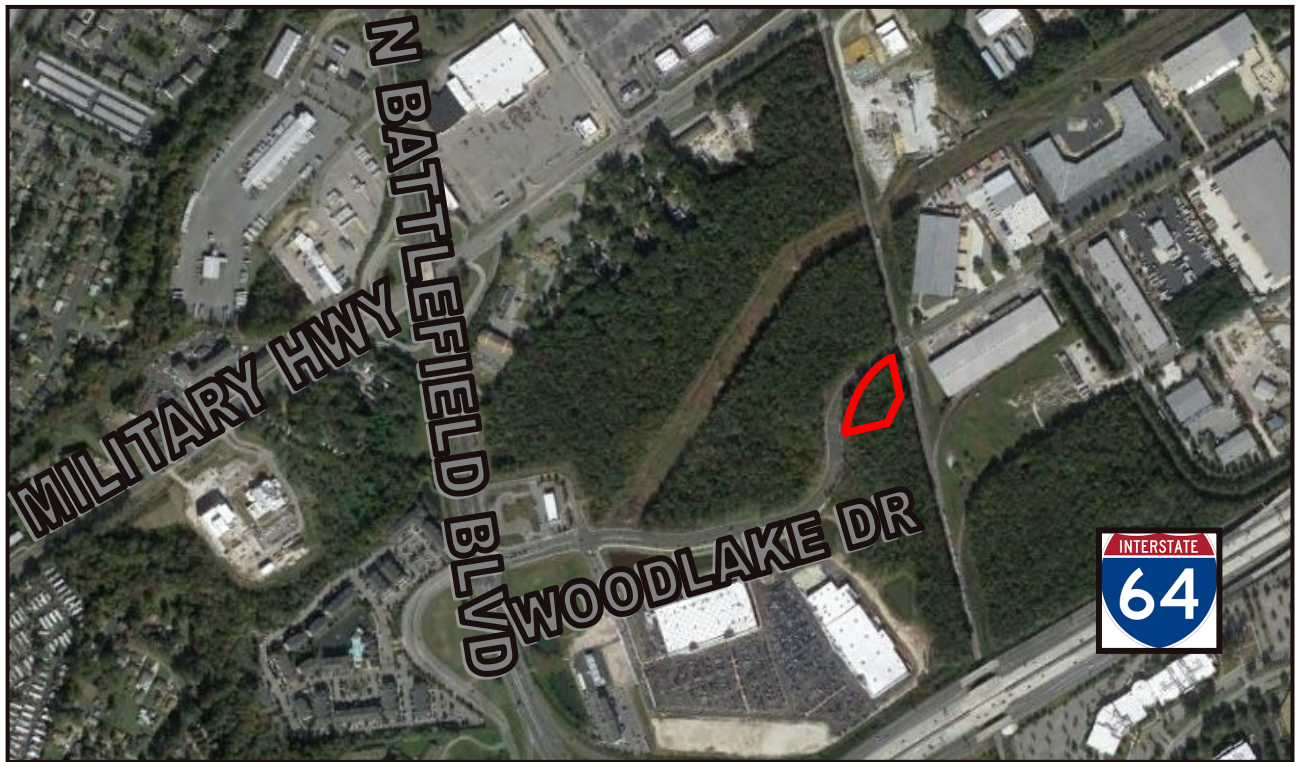


COMMERCIAL RETAIL LAND FOR SALE

351 Woodlake Drive
(Greenbrier) Chesapeake, VA 23320



PRICE NEGOTIABLE

- 2.583 Acres, Zoned B3 - Commercial Retail Land
- New Woodlake Drive Extension
- Next to the new Greenbrier Square, Kroger, Dick's Sporting Goods, Field & Stream, HomeGoods and Planet Fitness
- City Water & Sewer
- Approximately 58,000 cars daily on Battlefield Boulevard

The information presented in this marketing flyer is obtained from sources believed to be reliable, but is not warranted.
This offer is subject to prior sale or lease, errors, omissions or withdrawal without notice.

EXCLUSIVELY OFFERED BY :

CONTACT: LINDSEY R. ELLIOTT

lre@riddleassociates.com

ROBB RIDDLE, CCIM

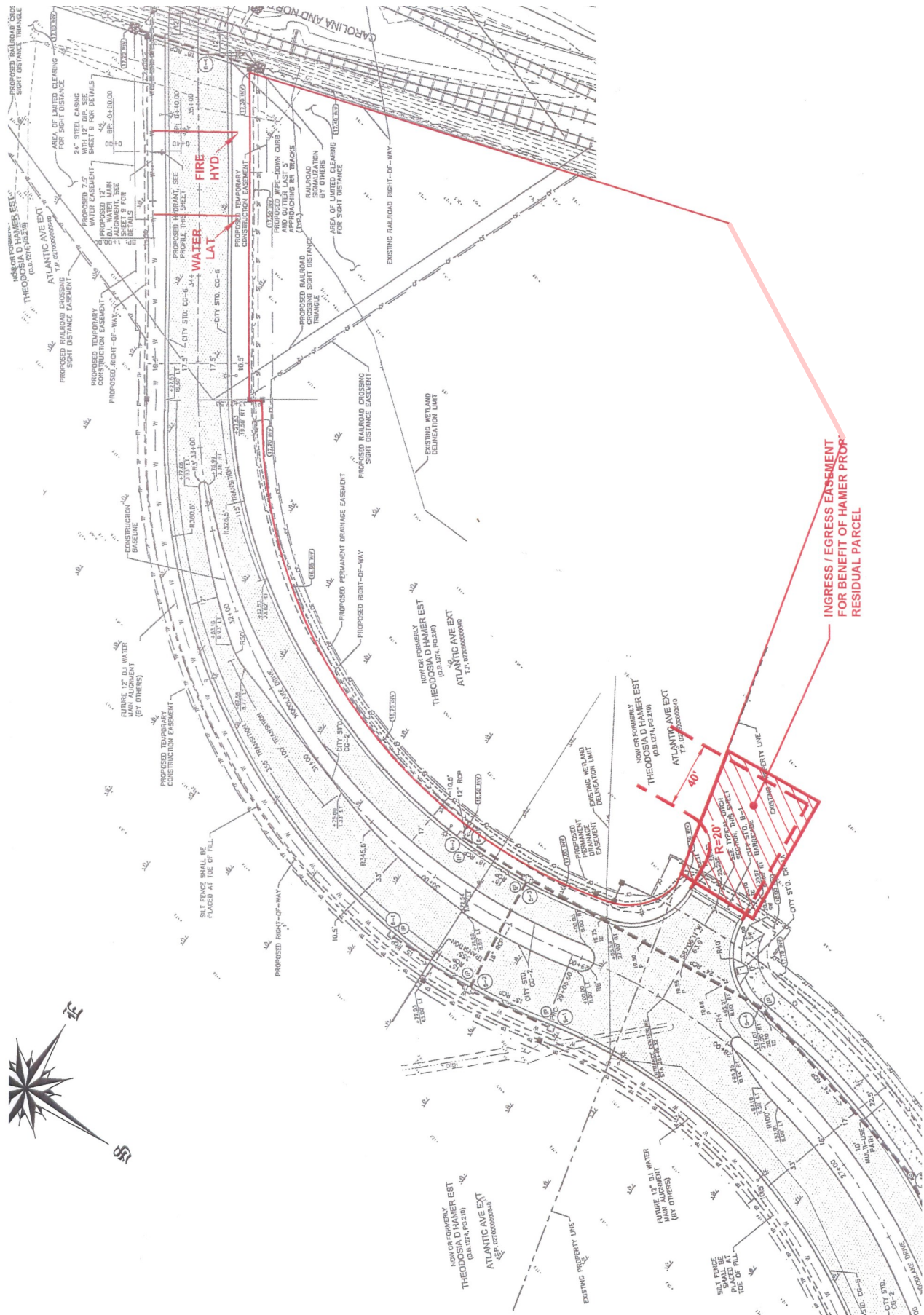
rlr@riddleassociates.com

(757) 523-1900

RIDDLE ASSOCIATES, INC.

Commercial Real Estate

"Real Estate Services Tailored to Your Needs"



351 Woodlake Drive, Chesapeake, VA 23320

The information presented in this marketing flyer is obtained from sources believed to be reliable, but is not warranted. This offer is subject to prior sale or lease, errors, omissions or withdrawal without notice.

NOTES:

1. THIS COMPOSITE DRAWING DOES NOT CONSTITUTE A BOUNDARY SURVEY OR SUBDIVISION PLAT. IT WAS PREPARED FROM DEEDS AND PLATS OBTAINED FROM THE CLERK OF COURTS OFFICE, CITY OF CHESAPEAKE, VIRGINIA. IT IS NOT SUITABLE FOR RECORDATION OR CONVEYANCE OF LAND.
2. THIS COMPOSITE DRAWING IS NOT INTENDED TO SHOW ANY PHYSICAL FEATURES, NOR ENVIRONMENTAL ISSUES SUCH AS WETLANDS, EXISTING STRUCTURES, OR ANY UTILITIES, PRIVATE OR PUBLIC. HASSELL & FOLKES DID NOT DO ANY FIELD WORK IN THE PREPARATION OF THIS DRAWING.
3. THIS COMPOSITE DRAWING WAS PERFORMED WITHOUT THE BENEFIT OF A TITLE REPORT AND CONSEQUENTLY MAY NOT DEPICT ALL MATTERS AFFECTING THE TITLE OF THE PROPERTY SHOWN.



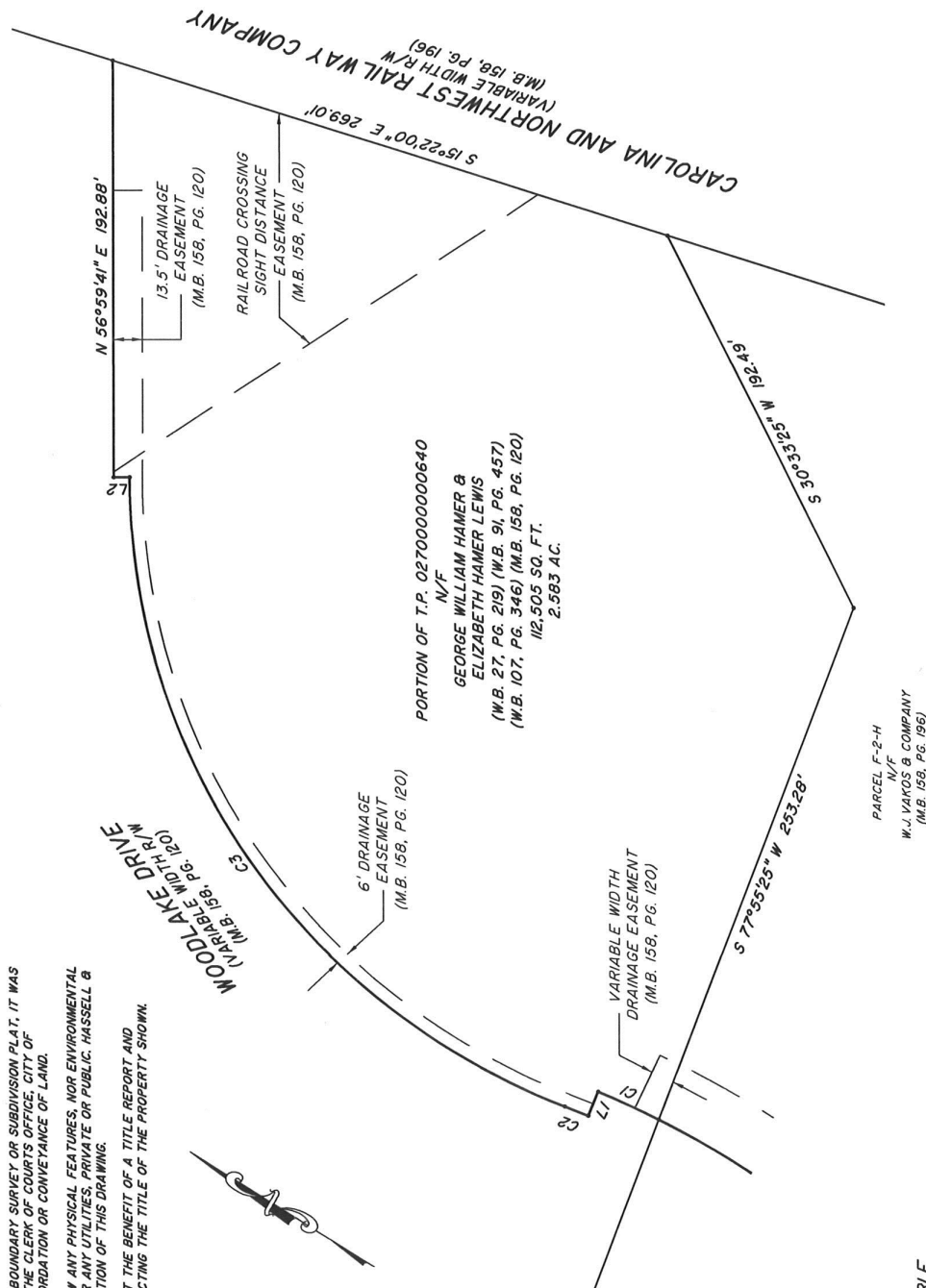
COMPOSITE DRAWING
OF
PORTION OF
T.P. 0270000000640
AS SHOWN IN
M.B. 158, PG. 120
CHESAPEAKE, VIRGINIA

LINE TABLE

LINE	BEARING	DISTANCE
L1	N 79°34'00" E	11.99'
L2	S 33°00'19" E	7.50'

CURVE TABLE

CURVE	DELTA	RADIUS	LENGTH	TANGENT	CHORD	BEARING
C1	4°12'53"	420.00'	30.90'	15.46'	30.89'	N 08°19'33" W
C2	1°38'35"	408.00'	11.70'	5.85'	11.70'	N 11°15'18" W
C3	69°04'16"	312.00'	376.12'	214.72'	353.76'	N 22°27'33" E



GRAPHIC SCALE

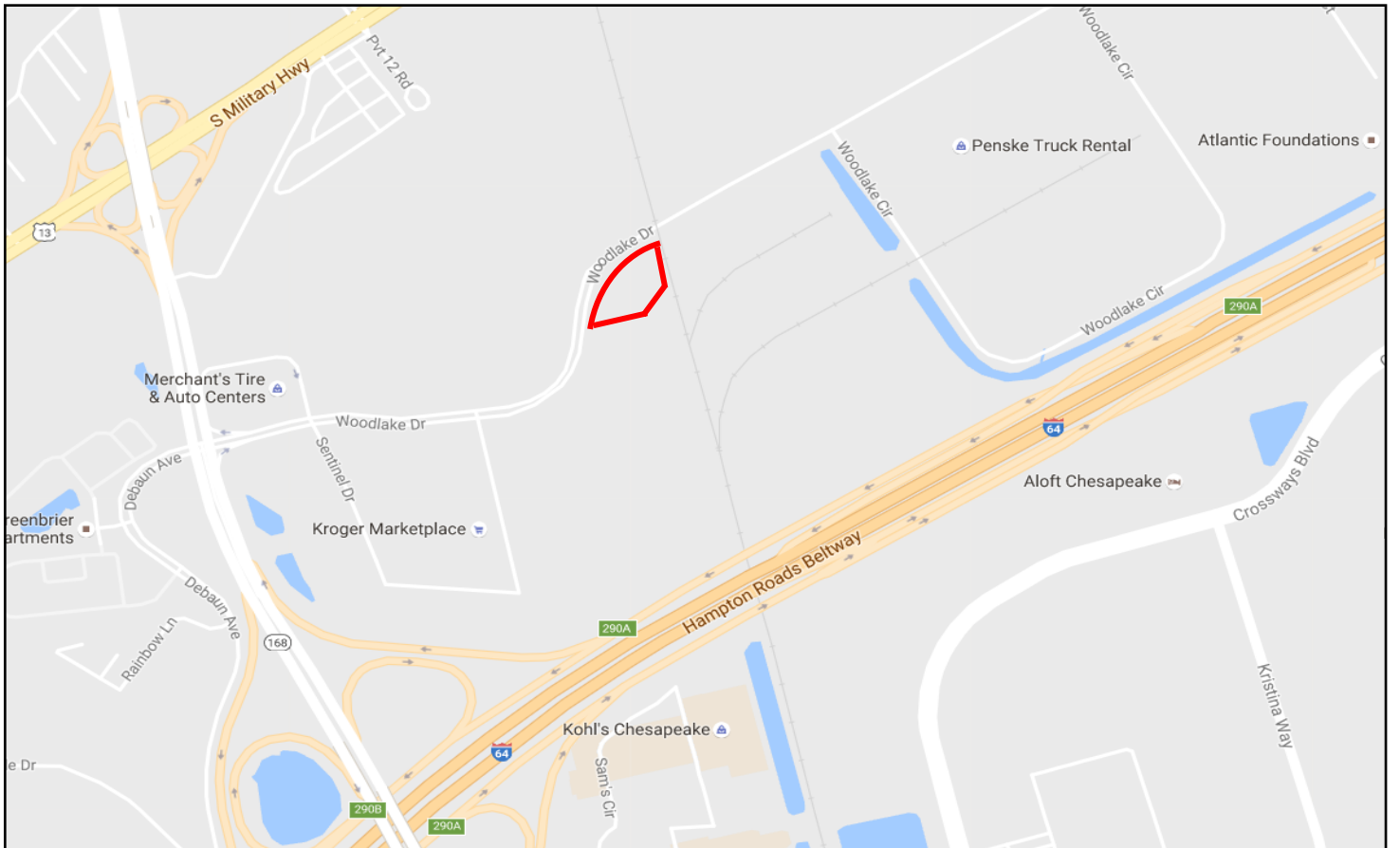


SCALE: 1"=50'

HASSELL & FOLKES, P.C.
ENGINEERS-SURVEYORS-PLANNERS
325 VOLVO PARKWAY
CHESAPEAKE, VIRGINIA 23320
PHONE: (757) 547-9531 FAX: (757) 547-9481
www.hfpc-online.com

351 Woodlake Drive, Chesapeake, VA 23320

The information presented in this marketing flyer is obtained from sources believed to be reliable, but is not warranted. This offer is subject to prior sale or lease, errors, omissions or withdrawal without notice.



351 Woodlake Drive, Chesapeake, VA 23320

The information presented in this marketing flyer is obtained from sources believed to be reliable, but is not warranted.
This offer is subject to prior sale or lease, errors, omissions or withdrawal without notice.