

FOR LEASE

Capitol Hill Retail

501 East Pine Street
SEATTLE, WA 98122

Prime Corner
Retail Space
2,205 SF

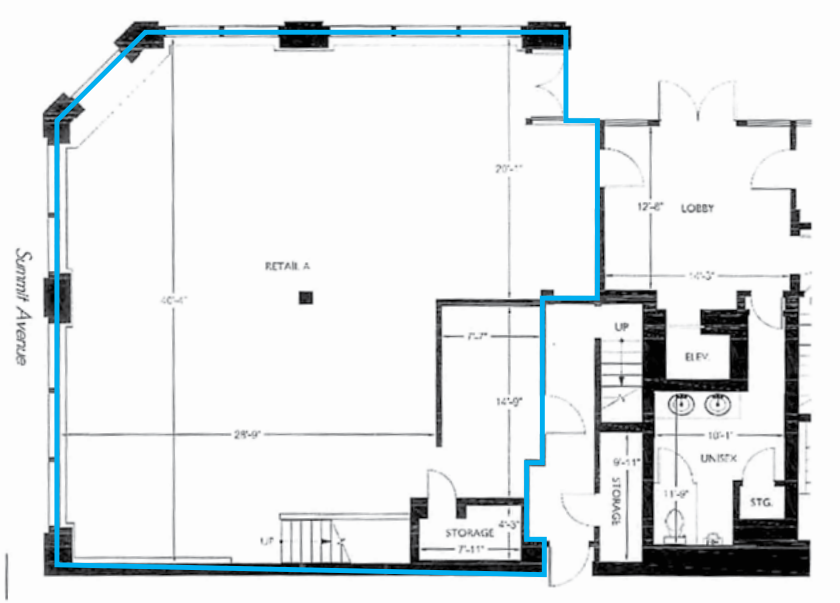
Located at the intersection of Pine & Summit.
High-ceiling, corner suite with remarkable exposure.
Minutes to Business Center.



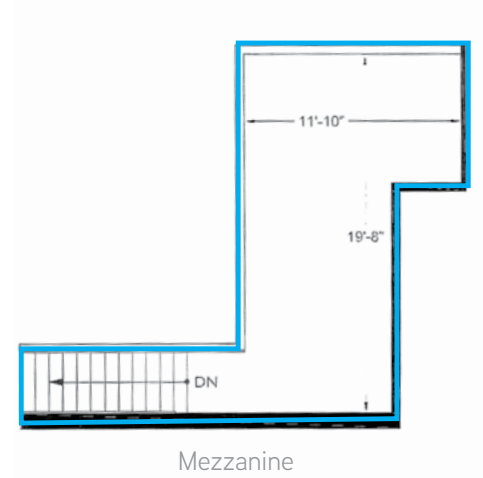
Colliers International
601 Union Street | Suite 5300
Seattle, WA 98101
+1 206 223 0866

Xinxin Li
Senior Director
+1 206 223 0485
xinxin.li@colliers.com

Ryan Marn, CCIM
Associate Vice President
+1 206 223 1431
ryan.marn@colliers.com



Ground level



Mezzanine





Building Economics



Walk Score™
99



Transit Score™
100

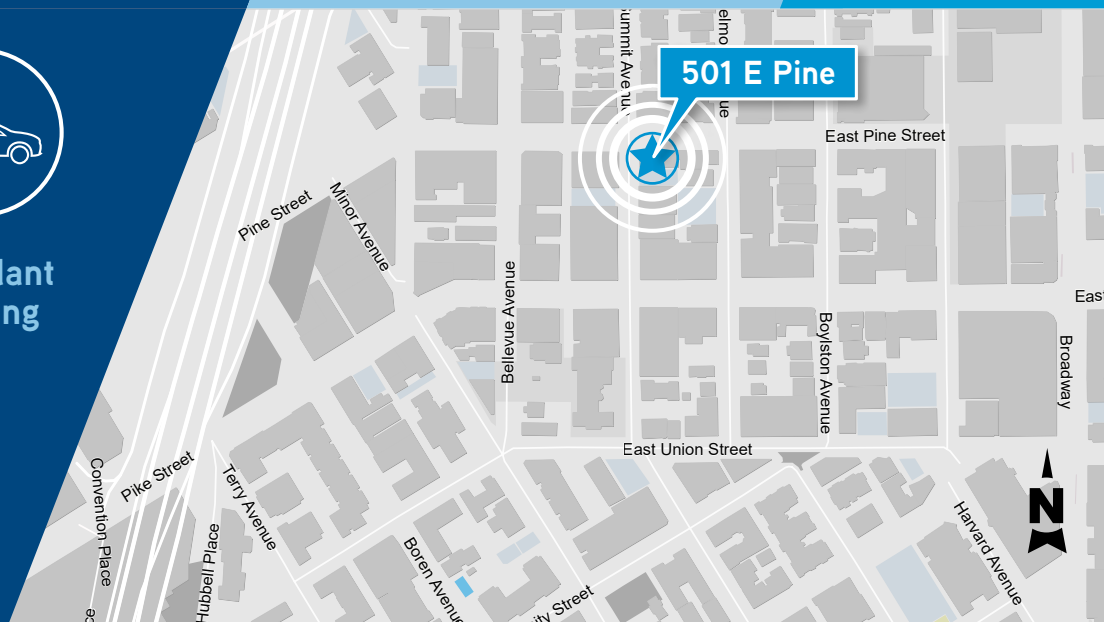


Bike Score™
75



Abundant
Parking

Location



Base Rent:
\$48.00 PSF

NNN:
\$8.50 PSF
(includes all utilities)

Term:
5-10 years

FOR LEASE | CAPITOL HILL RETAIL SPACE // 501 East Pine Street // Seattle



Xinxin Li
Senior Director
+1 206 223 0485
xinxin.li@colliers.com

Ryan Marn, CCIM
Associate Vice President
+1 206 223 1431
ryan.marn@colliers.com

This document has been prepared by Colliers International for advertising and general information only. Colliers International makes no guarantees, representations or warranties of any kind, expressed or implied, regarding the information including, but not limited to, warranties of content, accuracy and reliability. Any interested party should undertake their own inquiries as to the accuracy of the information. Colliers International excludes unequivocally all inferred or implied terms, conditions and warranties arising out of this document and excludes all liability for loss and damages arising therefrom. This publication is the copyrighted property of Colliers International and/or its licensor(s). © 2019. All rights reserved.

Colliers International
601 Union Street | Suite 5300
Seattle, WA 98101
www.colliers.com

