

COMMERCIAL SPACE

121 E.MAIN ST, ST. CLAIRSVILLE, OH



FOR
LEASE



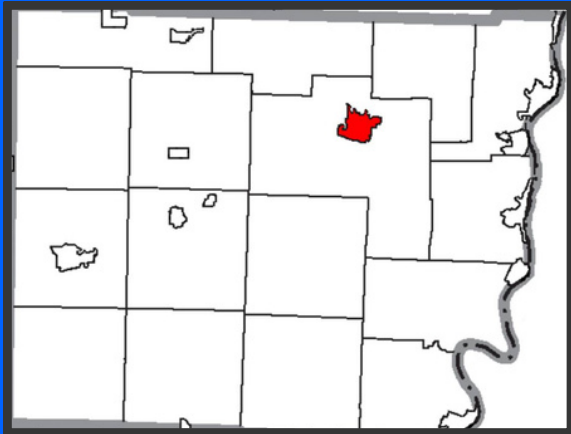
**HARVEY
GOODMAN**

Broker, John Sambuco

Jay Goodman



- **Location:** Situated in Belmont County in eastern Ohio, just off Interstate 70 and close to the Ohio-West Virginia border.
- **County Seat:** St. Clairsville serves as the county seat of Belmont County.
- **Historic Charm:** The city features a charming downtown with historic architecture and local businesses that reflect its 19th-century roots.
- **Population:** Home to approximately 5,000 residents, offering a small-town atmosphere with access to larger metropolitan areas.
- **Recreation:** Includes Memorial Park, which offers a pool, walking trails, sports fields, and picnic areas.
- **Shopping & Dining:** Nearby Ohio Valley Mall and various locally owned restaurants and shops provide a mix of retail and dining options.
- **Proximity to Wheeling, WV:** Just minutes from Wheeling, providing easy access to additional amenities, employment opportunities, and cultural events.



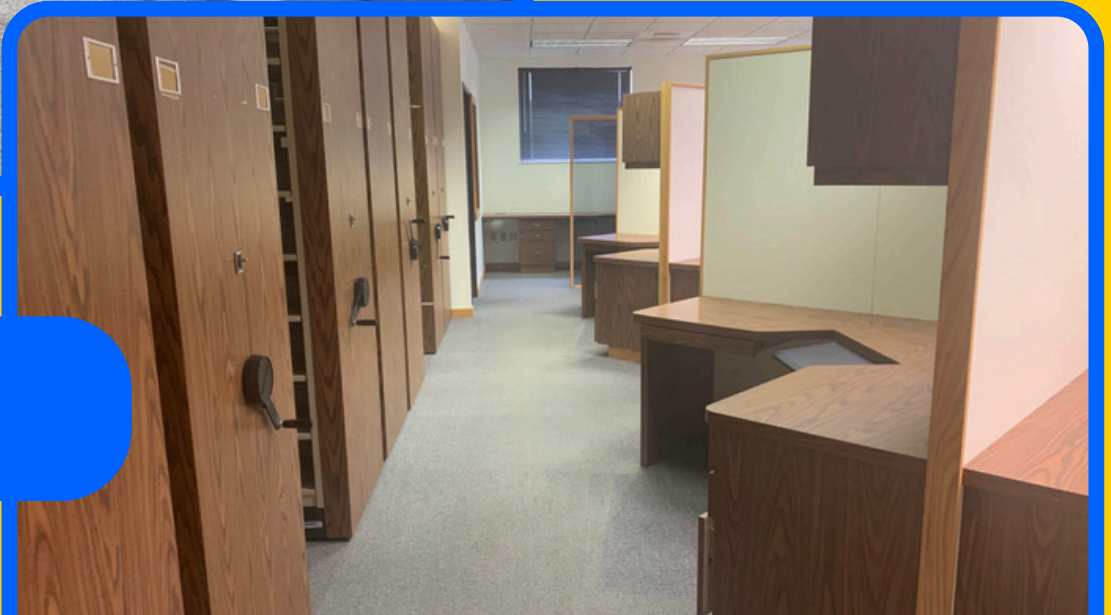
LOCATION OVERVIEW

The city of St. Clairsville was established in 1796 as Newellstown and renamed in 1802 to honor General Arthur St. Clair. It is the county seat of Belmont County and is home to 5,000 people, businesses, and recreational opportunities. St. Clairsville's Downtown Historic District, a portion of which was listed on the U.S. Department of the Interior's National Register of Historic Places in 1994, is the heartbeat of the community. The Belmont County Courthouse and the Belmont County Heritage Museum serve as anchors. The service industry is well represented with many professional offices, banks and small businesses, along with county offices and the public library.



**HARVEY
GOODMAN**

Broker, John Sambuco



Executive Summary

Discover a professional and versatile 1,800 sq. ft. office space in the heart of downtown St. Clairsville. This well maintained property offers 13 work stations and an office with options to suit a variety of business needs. Located on Main Street, the property enjoys excellent visibility, easy accessibility, and proximity to local dining, shops, and the Belmont County Courthouse. Perfect for professional services, administrative operations, or a growing business seeking a central, high-traffic location.



**HARVEY
GOODMAN**

Broker, John Sambuco

Property Highlights



- **1,800 SF**
- **Reception area + multiple private offices**
- **Downtown Main Street location**
- **Near courthouse, restaurants, and retail**
- **Strong visibility and traffic**
- **Ample nearby parking**

For Lease
\$2,350

PHOTOS

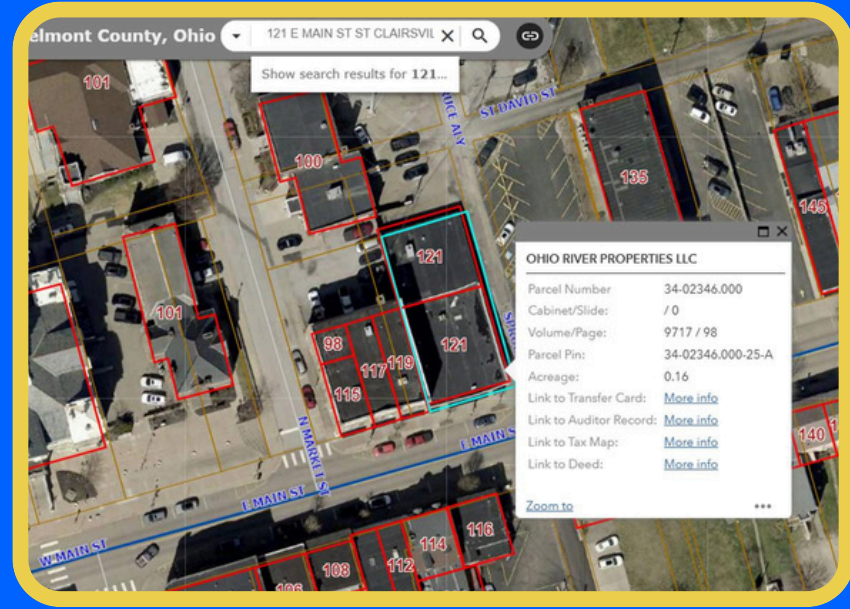


**HARVEY
GOODMAN**

Broker, John Sambuco



PLAT MAP





**HARVEY
GOODMAN**

Broker, John Sambuco

**THANK
YOU!**



STEUBENVILLE, OH OFFICE
2700 Sunset Blvd
Steubenville, Ohio 43952
740-264-0300

ST CLAIRSVILLE, OH OFFICE
250 W. Main St
St. Clairsville, Ohio 43950
740-695-3131

MARTINS FERRY, OH OFFICE
410 Walnut St
Martin Ferry, OH 43935
740-633-6363

WEIRTON, WV OFFICE
253 Three Springs Dr
Weirton, WV 26062
304-723-3131

WHEELING, WV, OH OFFICE
980 R National Rd
Wheeling, WV 26003
304-233-4451

BARNESVILLE, OH OFFICE
820 Bond Ave
Barnesville, Ohio 43713
740-425-3535

JAY GOODMAN, CCIM
O (740) 695-3131, C (773) 936-6511
jayg@goodmanrealtor.com



The information contained in the following Marketing Package is proprietary and strictly confidential. It is intended to be reviewed only by the party receiving it from Harvey Goodman and should not be made available to any other person or entity without the written consent of Harvey Goodman Realtor.

The information in this market package has been secured by sources deemed to be reliable. Harvey Goodman Realtor makes no representations or warranties expressed or implied as to the accuracy of this information. References to square footage or age are approximate. Purchaser must verify the accuracy of the information and bears all risks for any inaccuracies. Information is subject to verification and no liability for errors or omissions are assumed.