



FOR LEASE

AFFORDABLE PROFESSIONAL OFFICES

830 N Main St,
Wichita, KS 67203

CONTACT

JAKE RAMSTACK

jake@insitere.com
M 316-841-3814

PROPERTY INFO



SPACE AVAILABLE

Suite 203 | 121 SF | \$240
Suite 205 | 281 SF | \$450
Suite 206 | 286 SF | \$450
Suite 208 | 160 SF | \$300



LEASE RATE

\$19.50/SF



LEASE TYPE

Full Service



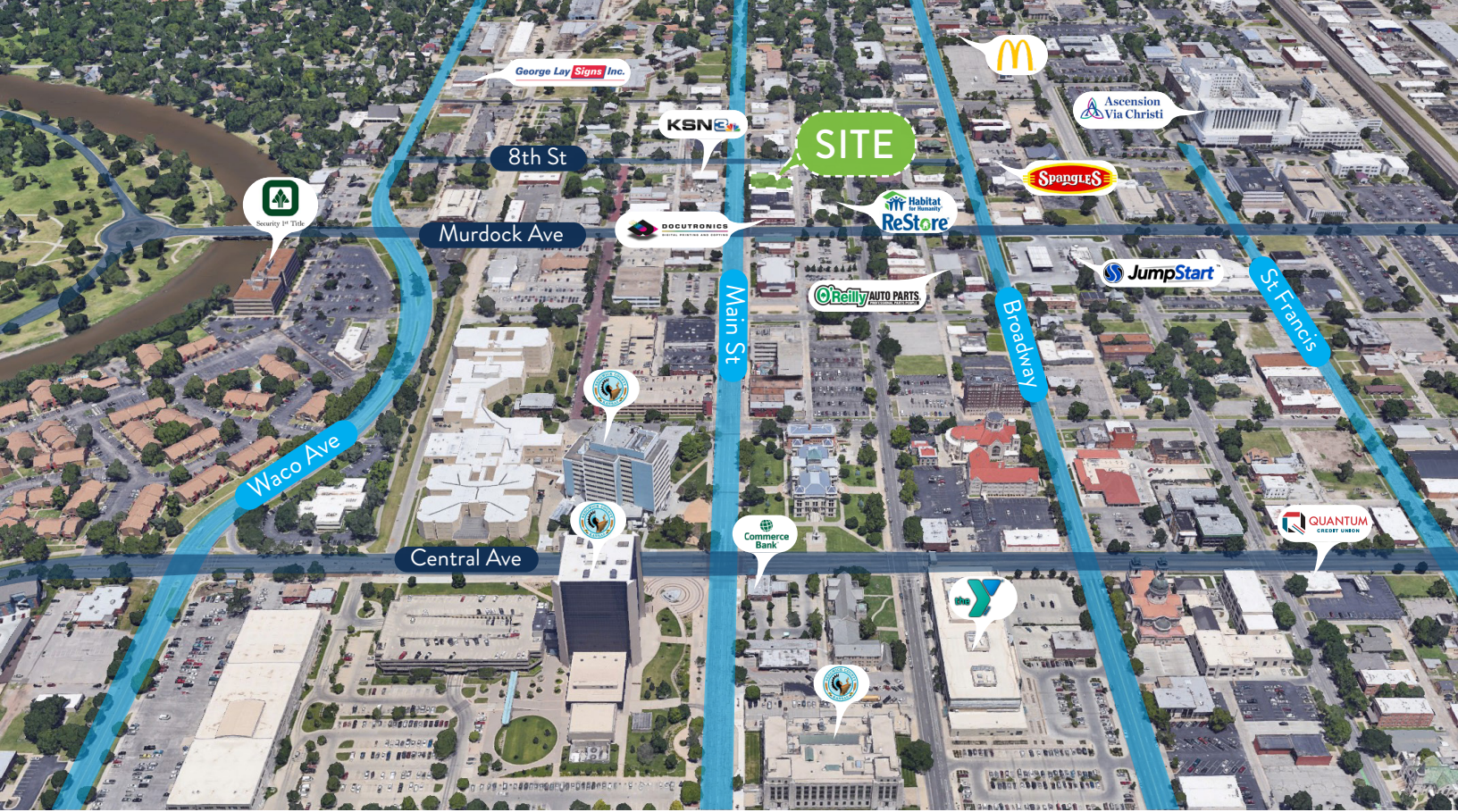
HIGHLIGHTS

- Proximity to downtown
- Onsite parking
- Highly visible
- Multiple sizes
- Private offices

InSite

REAL • ESTATE • GROUP

608 W DOUGLAS AVE
INSITERE.COM | 316-618-1100



AREA NEIGHBORS



AREA NEIGHBORS

- Jump Start
- Ascension Via Christi St. Francis
- Credit Union of America
- Spangles
- Wichita Habitat For Humanity
- Commerce Bank
- KSNW-TV
- Little Saigon Restaurant
- Hutton
- InSite Real Estate Group
- Docutronics
- Quantum Credit Union
- Sedgwick County Courthouse
- Sedgwick County Election Office
- Wichita Park & Recreation
- O'Reilly Auto Parts
- George Lay Signs, Inc.
- Quantum Credit Union
- McDonald's



NO. OF BUSINESSES

5,750



DAY POPULATION

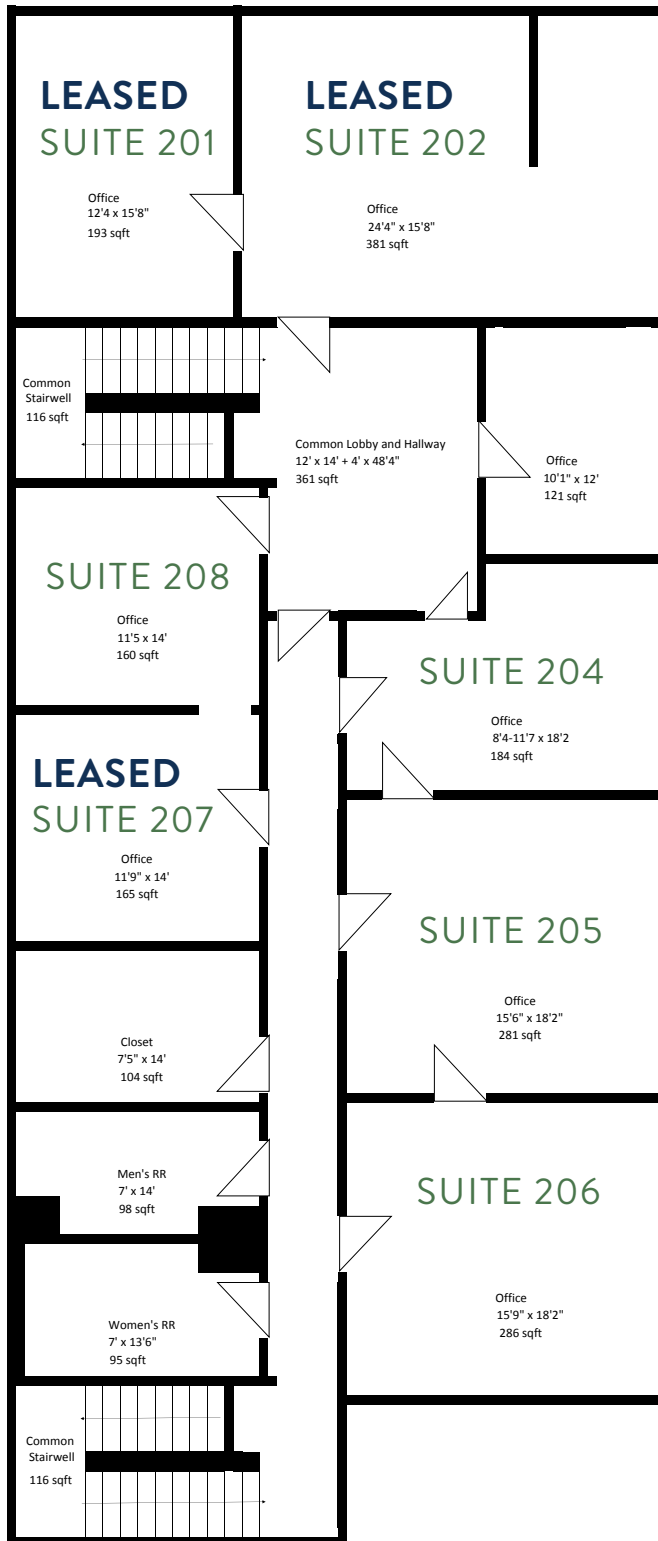
124,375



TRAFFIC COUNT

Murdock: 11,267

FLOOR PLAN



- SUITE 201 - **LEASED**
- SUITE 202 - **LEASED**
- SUITE 203 - **\$240**
- SUITE 204 - **LEASED**
- SUITE 205 - **\$450**
- SUITE 206 - **\$450**
- SUITE 207 - **LEASED**
- SUITE 208 - **\$300**

