



OFFICE BUILDING FOR LEASE

COLONY ON FAIRVIEW OFFICE PARK

6729 FAIRVIEW ROAD, SUITE E, CHARLOTTE, NC 28210



COLONY ON FAIRVIEW OFFICE PARK

6729 FAIRVIEW ROAD, SUITE E, CHARLOTTE, NC 28210

PROPERTY OVERVIEW



OFFERING SUMMARY

Available SF:	1,839 SF
Lease Rate:	\$26.00 SF/yr (NNN)
Building Size:	6,000 SF

PROPERTY OVERVIEW

Colonial Style office park in the heart of Southpark.

PROPERTY HIGHLIGHTS

- 2nd Floor Office Suite
- Located in SouthPark
- Directly across the street from Whole Foods, Philips Place, and Sharon Square
- Great ingress and egress to navigate the SouthPark market
- Fantastic access to shopping, restaurants, hotels and other amenities

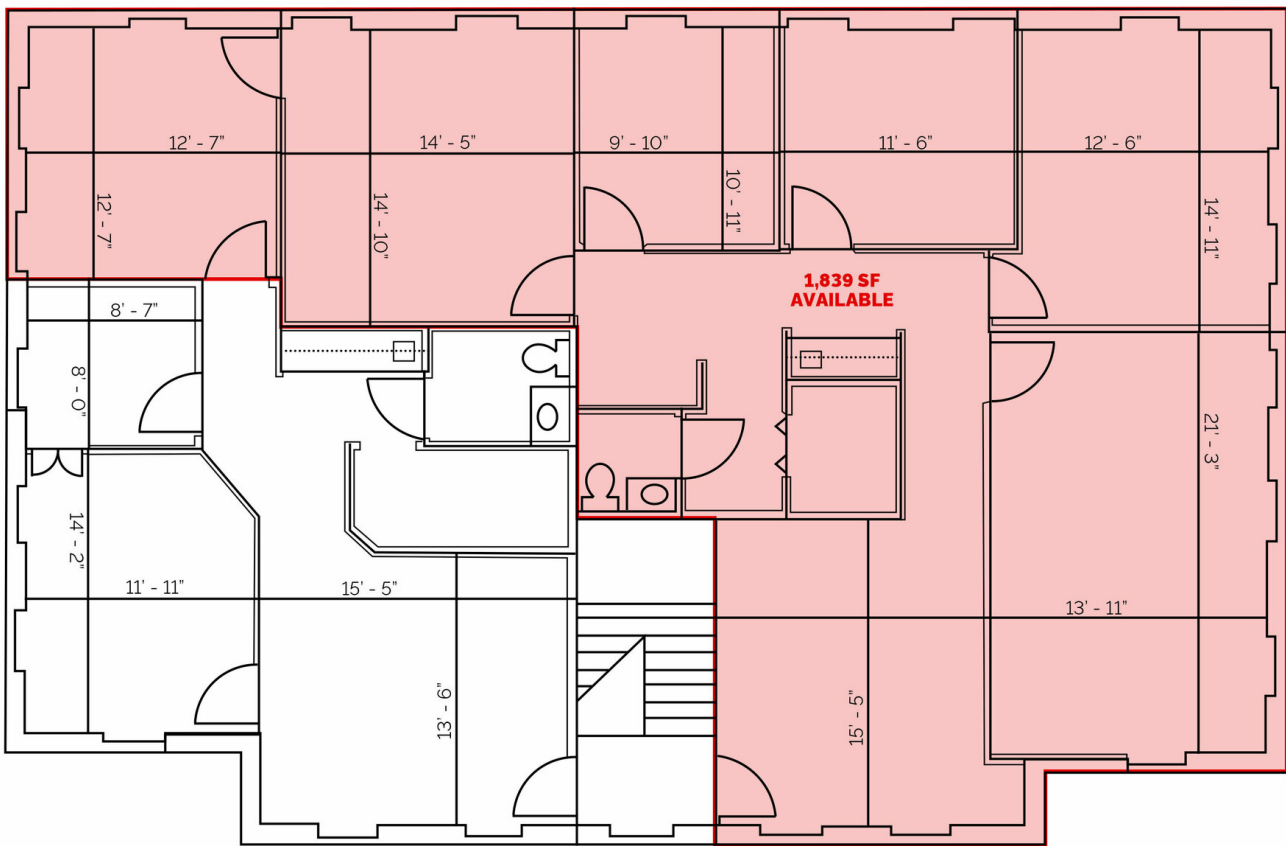
DEMOGRAPHICS

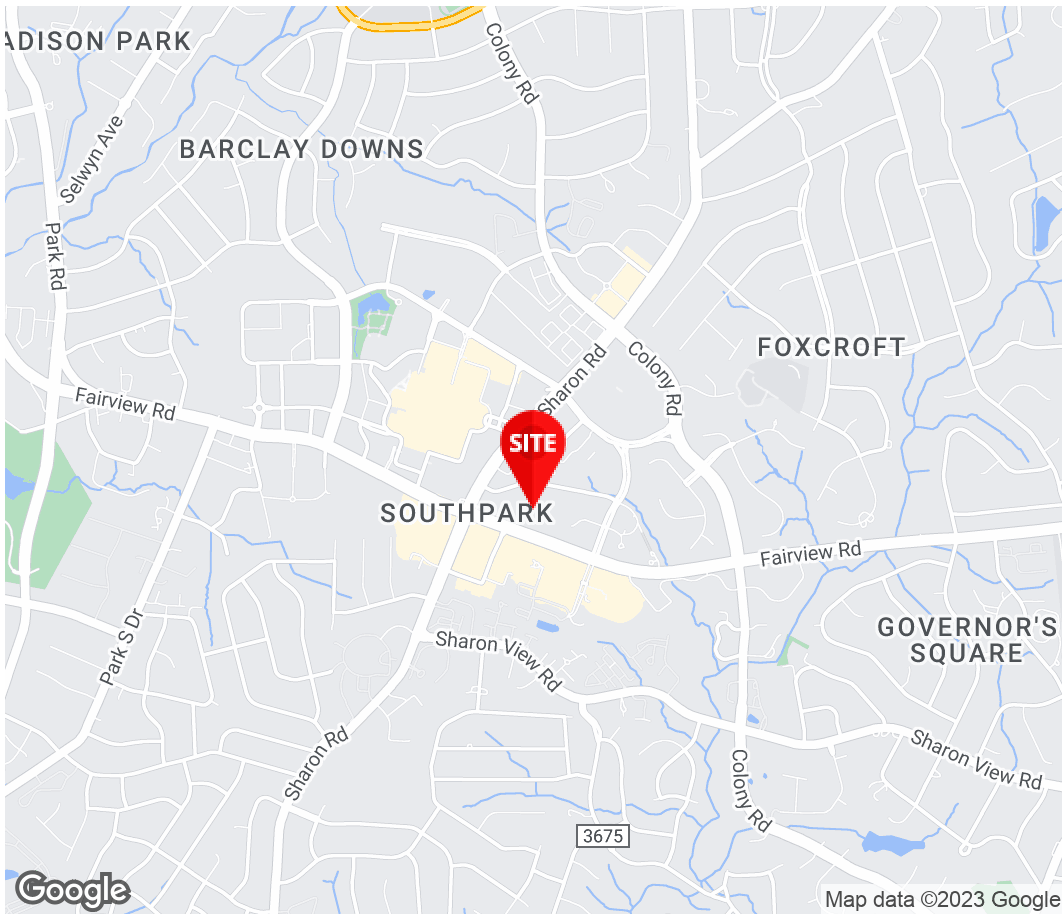
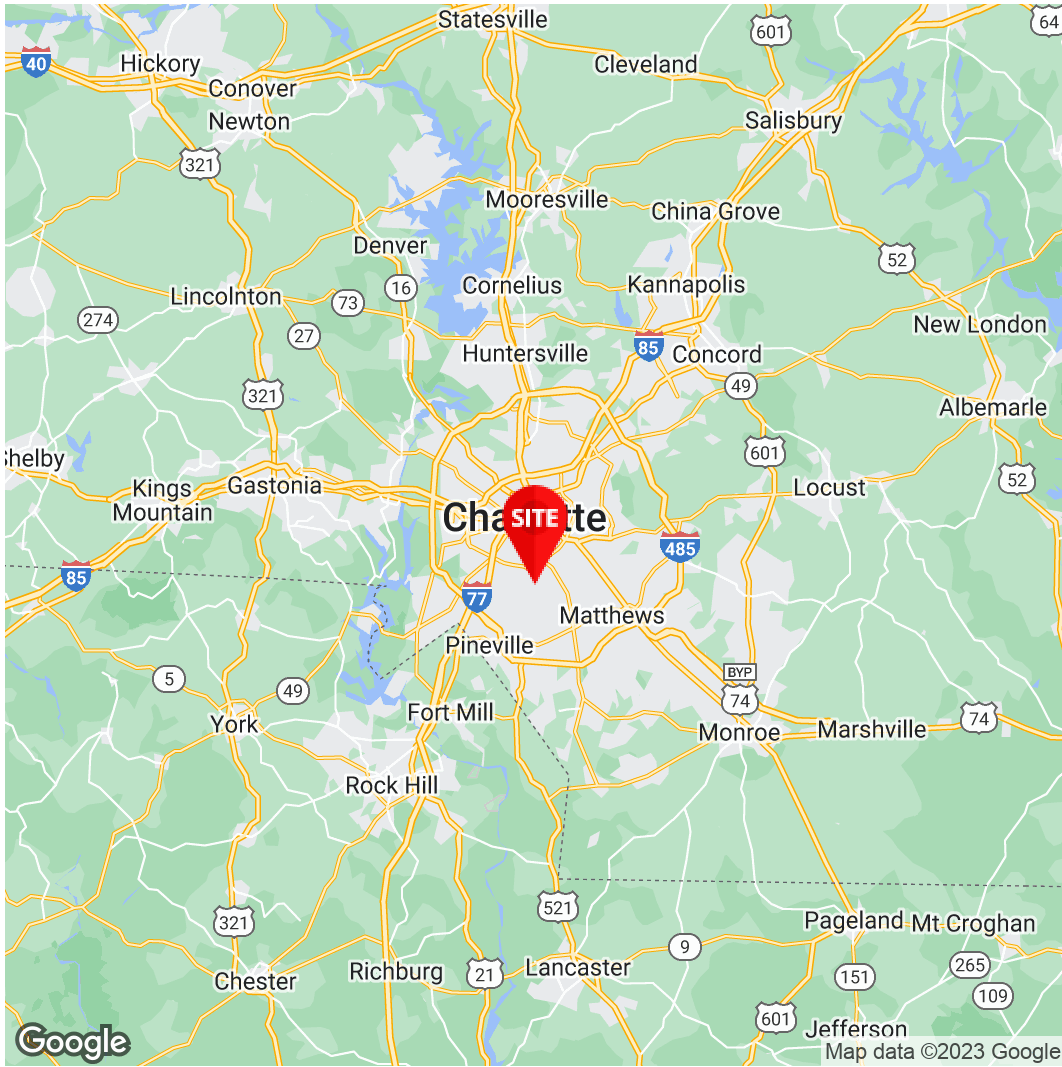
	1 Mile	3 Miles	5 Miles
Total Households:	5,047	40,372	114,743
Total Population:	9,394	88,146	250,342
Average HH Income:	\$162,061	\$149,906	\$120,891

COLONY ON FAIRVIEW OFFICE PARK

6729 FAIRVIEW ROAD, SUITE E, CHARLOTTE, NC 28210

SUITE __ | 1,839 RSF





Charles S. Neil, CCIM
Principal
980.819.0119
Charles.Neil@Divaris.Com

The information contained herein should be considered confidential and remains the sole property of Divaris Real Estate, Inc. at all times. Although every effort has been made to ensure accuracy, no liability will be accepted for any errors or omissions. Disclosure of any information contained herein is prohibited except with the express written permission of Divaris Real Estate, Inc.