



FOR SALE

Parcel 21162610020300
Kemmerer, WY 83101

± 27.92 AC | Commercial Land

Property Specs

OFFERED PRICE	\$975,000
LOT SIZE	± 27.92 Acres
TYPE	Commercial Land
ZONING	Commercial Highway
TAX ID	21162610020300

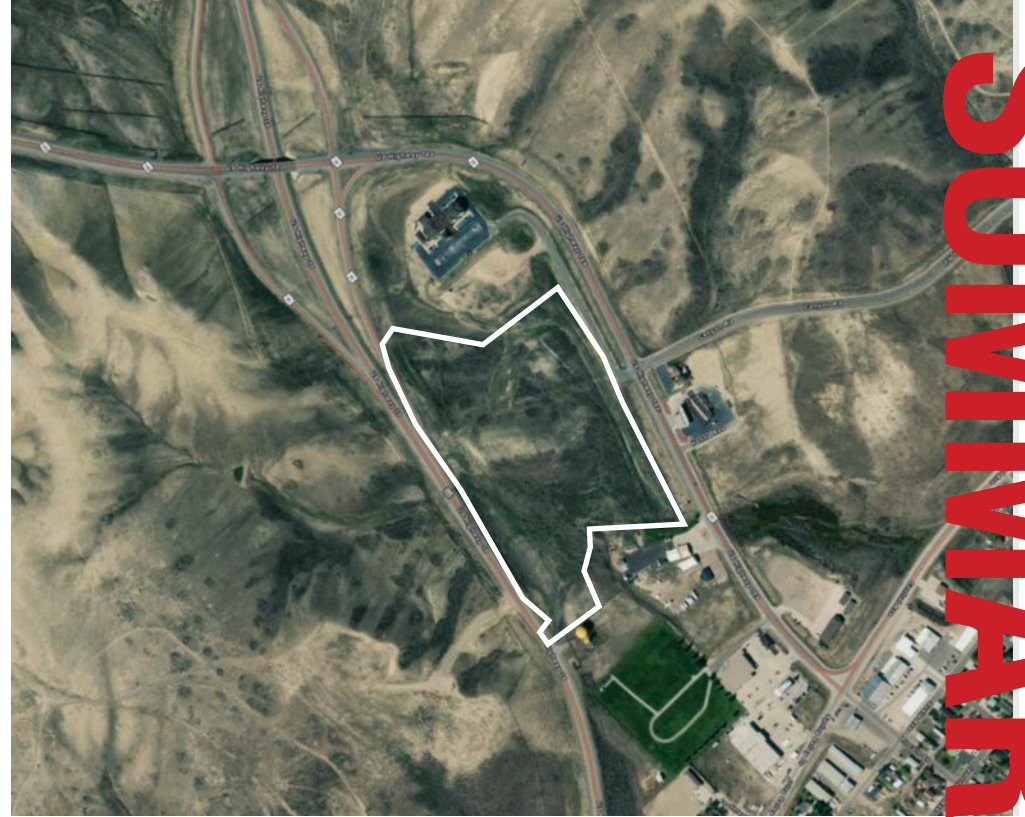
- Prime frontage along US-30 ALT with strong highway visibility and access
- Zoning allows retail, drive-thru, auto service, hospitality, medical, RV park, self-storage and more
- Positioned near the planned TerraPower Natrium Nuclear Facility (~\$3B public/private investment)
- Offered at ~\$35K/acre (~\$0.80/SF)



OR TEXT 23571 TO 39200

Message frequency will vary. Message and data rates may apply. Reply HELP for help or STOP to cancel.

[ARTI Terms of Service](#) | [ARTI Privacy Statement](#)

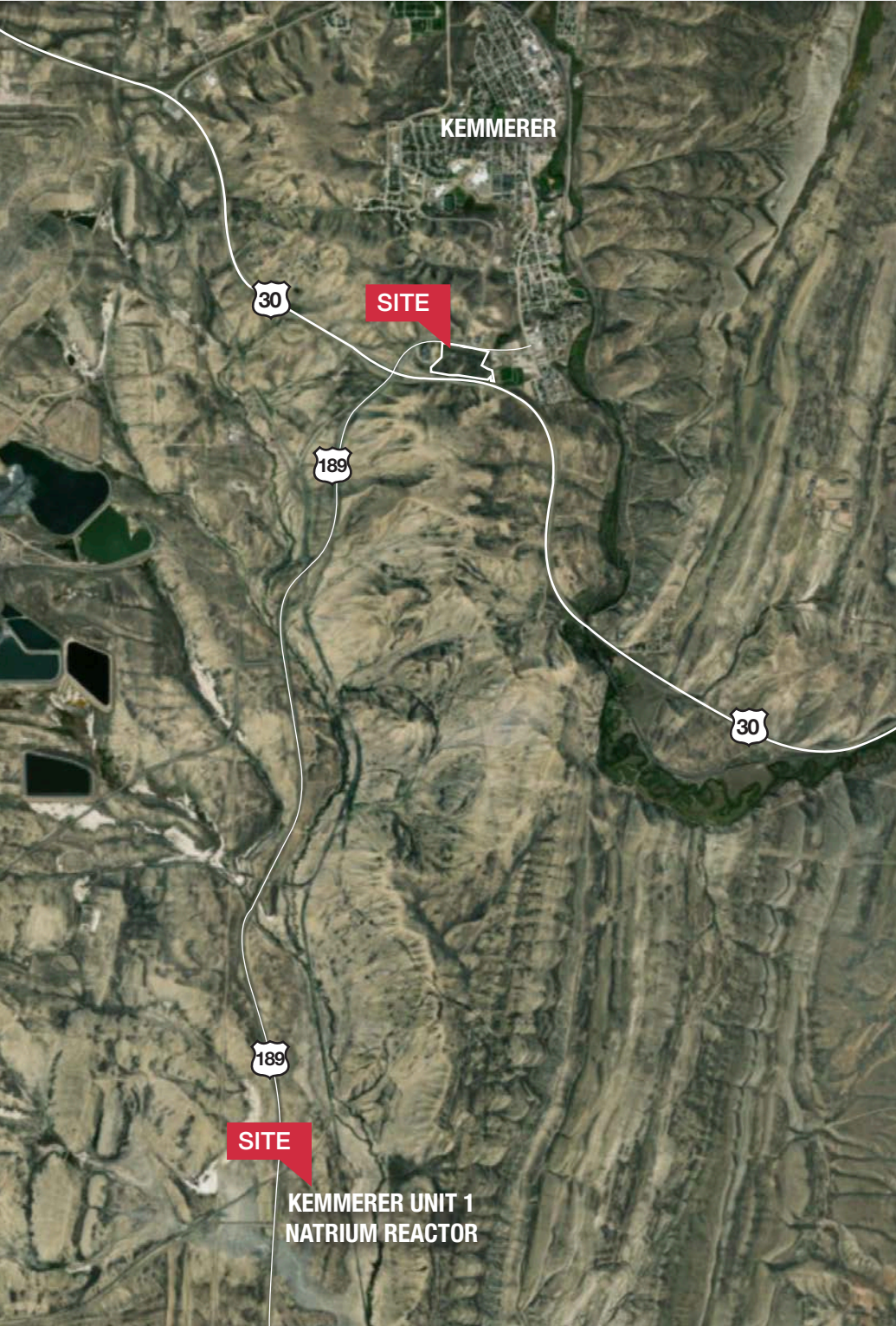


SUMMARY

AREA MAP



- Shops/Tenants
- Schools
- Public Parks
- Govt. Buildings
- Airport

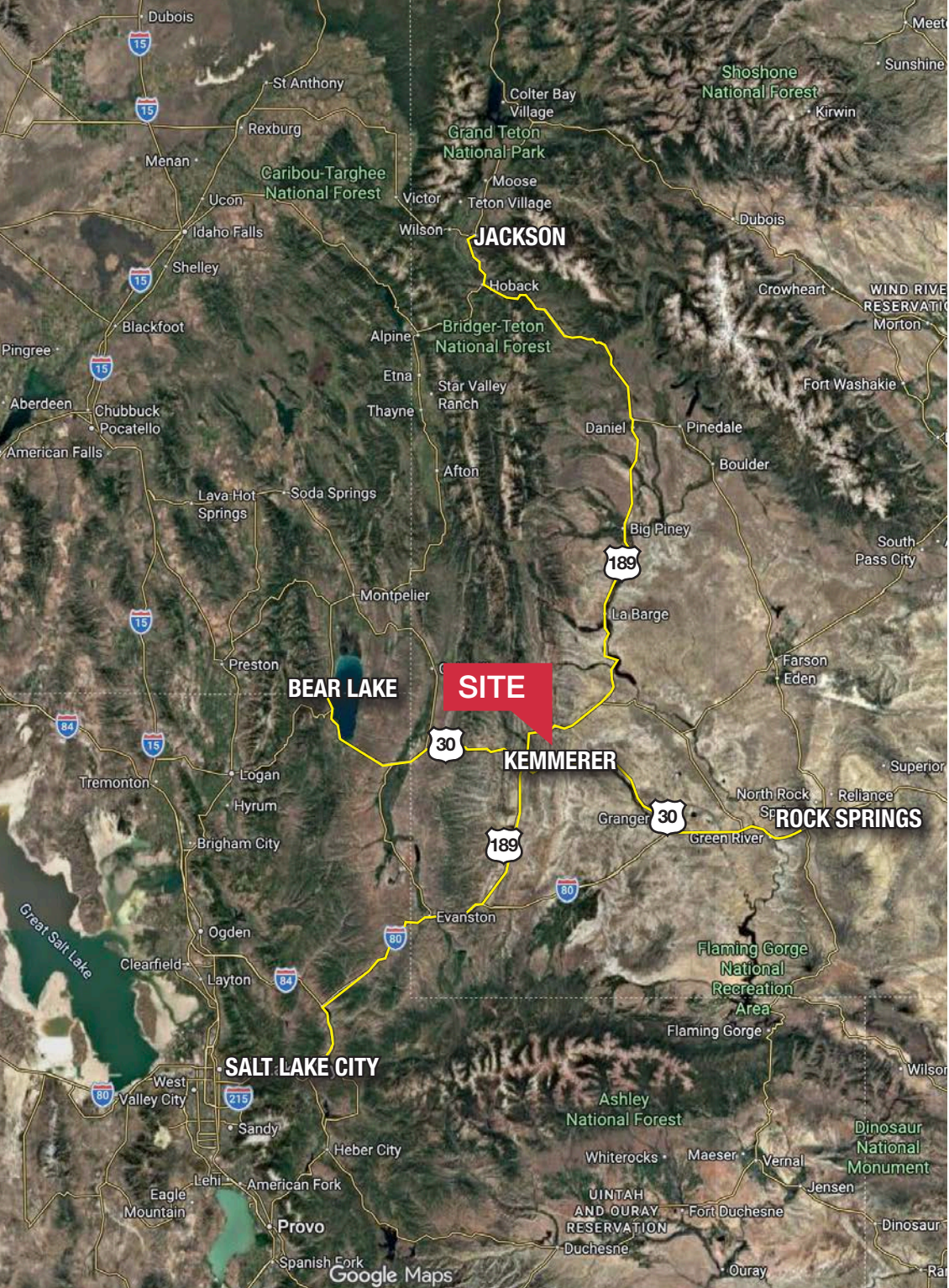


TerraPower Natrium Advanced Nuclear Project – Kemmerer, Wyoming

The subject property is strategically positioned along a primary ingress route into Kemmerer and is expected to be among the first commercial sites encountered by plant-related traffic entering the community from the TerraPower development. This location provides direct exposure to construction traffic, workforce activity, and long-term operational demand tied to one of the largest energy investments in Wyoming.

TerraPower — the advanced nuclear company founded by **Bill Gates** — is developing the Natrium reactor project in Kemmerer in partnership with the U.S. Department of Energy. Site work began in June 2024, with operations currently targeted around 2030. The project is expected to generate approximately 1,600+ construction jobs and roughly 250+ permanent positions once operational.

The scale and duration of this development position Kemmerer for sustained population support, housing demand, and increased commercial activity — creating a meaningful long-term growth driver for strategically located real estate.



Kemmerer sits between Wyoming’s premier recreation corridor and the Wasatch Front growth market.

The property benefits from proximity to Bear Lake and Jackson Hole tourism traffic while maintaining connectivity to the 2.6M+ Salt Lake City metro.

This location offers strategic access to both regional travelers and long-term economic growth corridors.

Regional Connectivity:

LOCATIONS	Driving Time
Bear Lake, Idaho	~1 Hour
Rock Springs, Wyoming	~1.5 Hours
Jackson, Wyoming	~2.75 Hours
Salt Lake City, Utah	~2.5 Hours

DEMOGRAPHICS



POPULATION

2025 Population

1-mile

707

3-mile

3,287

5-mile

3,376

HOUSEHOLDS

2025 Households

1-mile

340

3-mile

1,403

5-mile

1,438

INCOME

2025 Average HH Income

1-mile

\$86,180

3-mile

\$87,262

5-mile

\$87,601

TERMS & CONDITIONS

Terms and Conditions

This offering, including any related digital marketing, contains selected information pertaining to the Property and does not purport to be a representation of the state of the Property, to be all-inclusive, or to contain all or part of the information which interested parties may require to evaluate a purchase or lease of real property.

Financial Information

Any and all financial projections and information are provided for general reference purposes only and have been gathered from sources deemed reliable. Certain assumptions have been made relating to the general economy, market conditions, competition and other factors beyond the control of seller and NAI Premier. Therefore, all projections, assumptions and other information provided and made herein are subject to material variation.

Summary Documents

Additionally, all references to acreage, square feet, and other measurements are approximations. Any demographics, geographic information systems(GIS), maps, photography, zoning, site plan, survey, engineering, architectural drawings, and any other information are without assurance of their accuracy, time sensitivity, completeness, or status of approval. Documents presented may be preliminary, have no assurance of being “as built”, and may not reflect actual property boundaries or improvements. Additional information and an opportunity to inspect the Property can be made available to qualified parties. In this Memorandum, certain documents are described in summary form. These summaries do not purport to be complete nor necessarily accurate descriptions of the full documents referenced herein. Interested parties are expected to review and confirm all such summaries and other documents of whatever nature independently and not rely on the contents of this Memorandum in any manner.

Non-Warranty

Neither the seller or NAI Premier, nor any of their respective directors, officers, Affiliates or representatives make any representation or warranty, expressed or implied, as to the accuracy or completeness of this Offering Memorandum or any of its contents, as to the financial performance of the property, or as to the condition of the Property, malfunctions or mechanical defects on the Property or to any improvements thereon, including but not limited to the material, workmanship or mechanical components of the structures, foundations, roof, heating, plumbing, electrical or sewage system, drainage or moisture conditions, air conditioning, or damage by the presence of pests, mold or other organisms, environmental condition, soils conditions, the zoning of the Property, the suitability of the Property for Interested parties intended use or purpose, or for any other use or purpose.

No Obligation

No legal commitment or obligation shall arise by reason of your receipt of this Memorandum or use of its contents; Interested Parties are to rely solely on its investigations and inspections of the Property in evaluating a possible purchase or lease of the real property. The seller expressly reserves the right, at its sole discretion, to reject any or all offers to purchase or lease the Property, and/or to terminate discussions with any entity at any time, with or without notice, which may arise as a result of review of this Memorandum.

Confidentiality

By receipt of this Memorandum, you agree that this Memorandum and its contents are confidential in nature, that you will hold and treat such in the strictest confidence and that you will not disclose this Memorandum, or any of its contents, to any other entity without the prior written authorization of the seller or NAI Premier. If after reviewing this Memorandum, you have no further interest in purchasing or leasing the Property, please delete or return this Memorandum to NAI Premier.



WHY NAI

Our professionals leverage decades of experience, industry-leading technology, and a leading global network to help you excel in your real estate goals.

325+
OFFICES

1.1 BIL
SF MANAGED

5,800+
PROFESSIONALS

TOP 6
2024 LIPSEY RANKING

 LEARN MORE AT
naiaexcel.com

NAI Premier

COMMERCIAL REAL ESTATE SERVICES, WORLDWIDE

7455 Union Park Ave, Ste A
Midvale, UT 84047

801.255.3333 | naiaexcel.com

Marlon Hill
Wy Lic RE-16554
801.548.3262
mhill@naiaexcel.com

Tom Longaker
Wy Lic RE-16600
801.755.1264
tlongaker@naiaexcel.com

This offering, including any related digital marketing, contains selected information pertaining to the Property and does not purport to be a representation of the state of the Property, to be all-inclusive, or to contain all or part of the information which interested parties may require to evaluate a purchase or lease of real property.

Neither the seller or NAI Excel, nor any of their respective directors, officers, Affiliates or representatives make any representation or warranty, expressed or implied, as to the accuracy or completeness of this Offering Memorandum or any of its contents, as to the financial performance of the property, or as to the condition of the Property, malfunctions or mechanical defects on the Property or to any improvements thereon, including but not limited to the material, workmanship or mechanical components of the structures, foundations, roof, heating, plumbing, electrical or sewage system, drainage or moisture conditions, air conditioning, or damage by the presence of pests, mold or other organisms, environmental condition, soils conditions, the zoning of the Property, the suitability of the Property for interested parties intended use or purpose, or for any other use or purpose. ARTI Terms of Service | <https://brokerstechnology.com/terms-of-use/> ARTI Privacy Policy | <https://brokerstechnology.com/privacy-policy/>