

2700 E FOOTHILL BLVD

Pasadena, CA 91107



AVAILABLE FOR LEASE



PROPERTY INFORMATION

Building Size

> 45,300 SF

Available Size

- > 2,133 SF
- > 2,499 SF
- > 6,182 SF

Length of Term

> 5-10 years

Zoning

> C

Parking

> Free parking
(Surface lot plus
subterranean
parking with a ratio
of 4.0/1,000 SF)

Year Built

> 1991

Available

> Immediately

GET IN TOUCH

SHADD WALKER, SIOR

Senior Executive Vice President

+1 213 532 3242

Shadd.Walker@colliers.com

License No. 1253297

MATTHEW MAZUR

Associate

+1 213 532 3203

Matthew.Mazur@colliers.com

License No. 01983729

COLLIERS INTERNATIONAL

+1 213 627 1214

865 S. Figueroa St, Suite 3500

Los Angeles, CA 90017

www.colliers.com



LOCATION HIGHLIGHTS



Easy access to the
134, 164, 210
& 710 Freeways



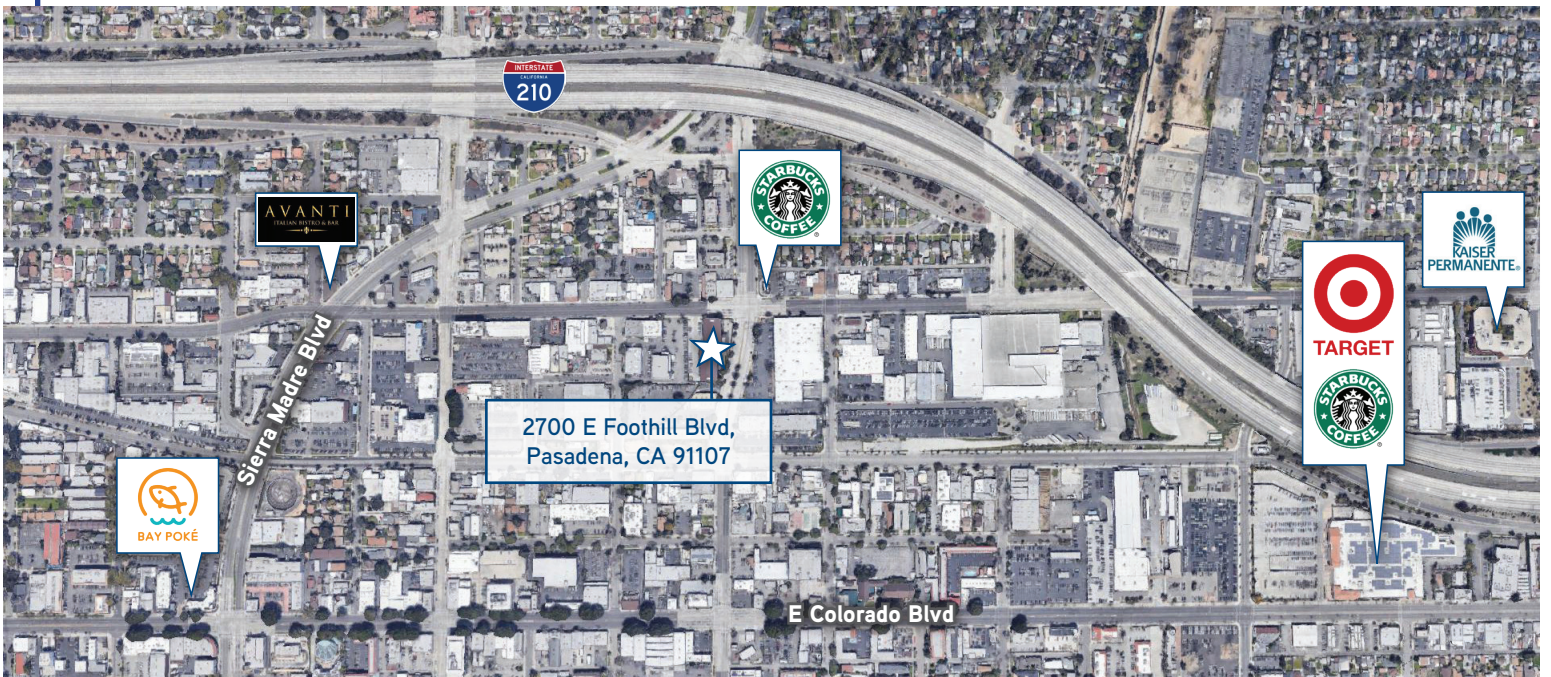
Close proximity to the
many offerings on
E Colorado Blvd



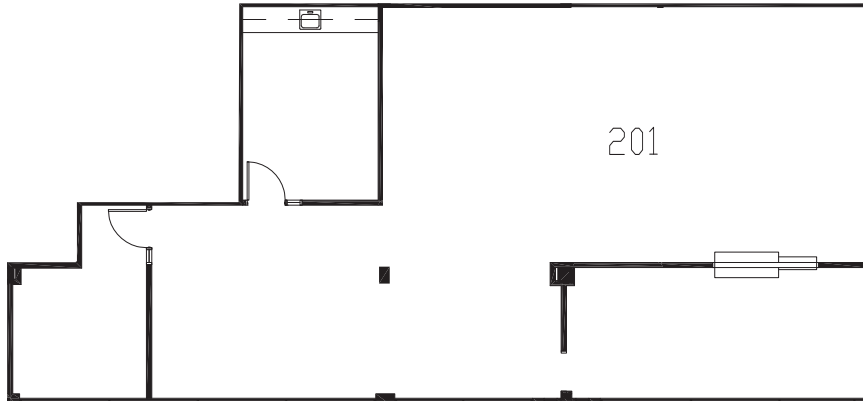
Within a 10-minute drive to
the Rose Bowl Stadium &
Old Town Pasadena



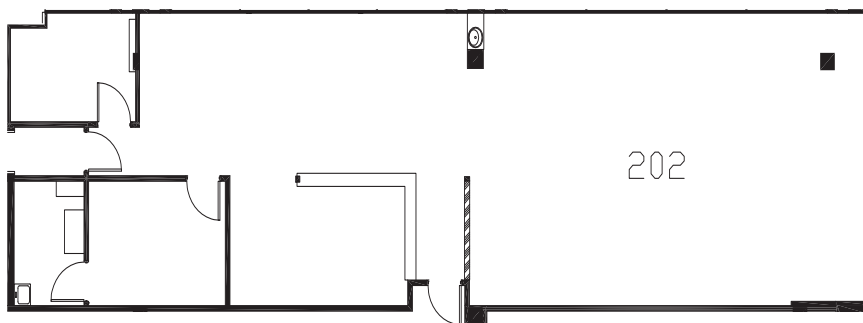
WalkScore rating of
89/100 - most errands are
accomplishable by foot



FLOOR PLAN

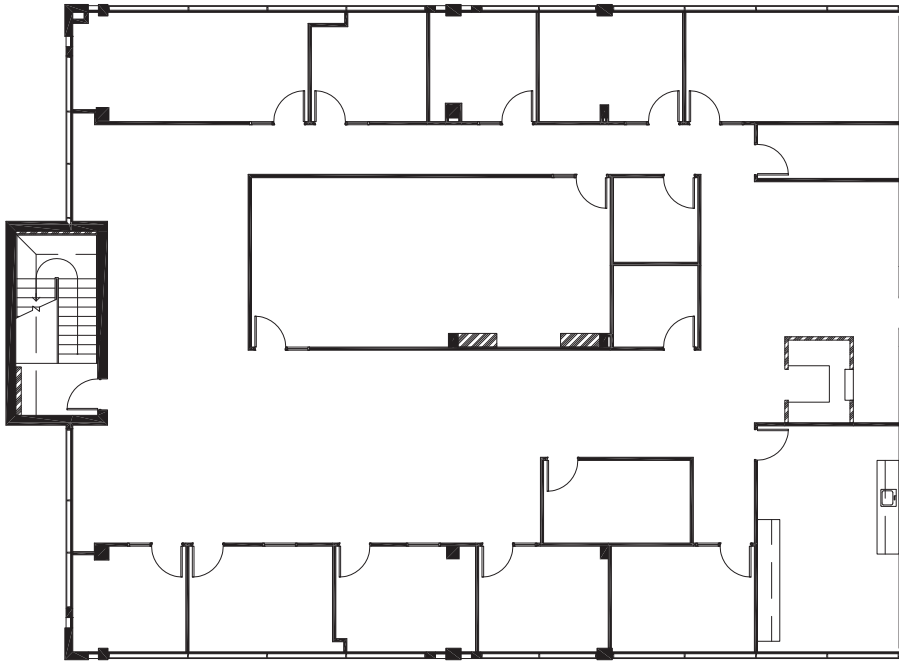


- > Second Floor
- > Suite 201
- > 2,133 SF Available
- > **\$2.80/SF FSG**



- > Second Floor
- > Suite 202
- > 2,499 SF Available
- > **\$2.80/SF FSG**

FLOOR PLAN



- > Third Floor
- > Suite 300
- > 6,182 SF Available
- > **\$2.80/SF FSG**



GET IN TOUCH

SHADD WALKER, SIOR
Senior Executive Vice President
+1 213 532 3242
Shadd.Walker@colliers.com
License No. 1253297

MATTHEW MAZUR
Associate
+1 213 532 3203
Matthew.Mazur@colliers.com
License No. 01983729

COLLIERS INTERNATIONAL
+1 213 627 1214
865 S. Figueroa St, Suite 3500
Los Angeles, CA 90017
www.colliers.com