



CORPORATE REALTY

201 St. Charles Ave., Suite 4411, New Orleans, LA 70170
504.581.5005 | corp-realty.com

OFFICE SPACE | FOR LEASE

Touch Down in Benson Tower

1450 Poydras Street

NEW ORLEANS, LA 70112

Maureen Clary CPM®
mclary@corp-realty.com
504.493.6766

Michael J. Siegel S10R
msiegel@corp-realty.com
504.581.5005



OFFICE SPACE | FOR LEASE

1450 Poydras Street, New Orleans, LA 70112

BUILDING DESCRIPTION

Your team can score with two suites available in Benson Tower, located directly next door to the Superdome and Champions Square. The 14th floor suites measure a combined 6,112 sf and feature private offices. The spaces can be leased separately or together.

Benson Tower is a 26-story, LEED certified, Class A office tower anchoring the Poydras corridor, adjacent to the Hyatt Regency New Orleans and across from the Medical District and New Orleans City Hall. The building features a hospitality suite, competitive parking garage rates, and 24/7 security. Take advantage of quick access to the interstate and other parts of the city. Walk easily to the Central Business District, government buildings, South Market District, restaurants, and more.

Corporate Realty provides on-site property management.

PARKING

3:1,000 rsf in Superdome Garage.



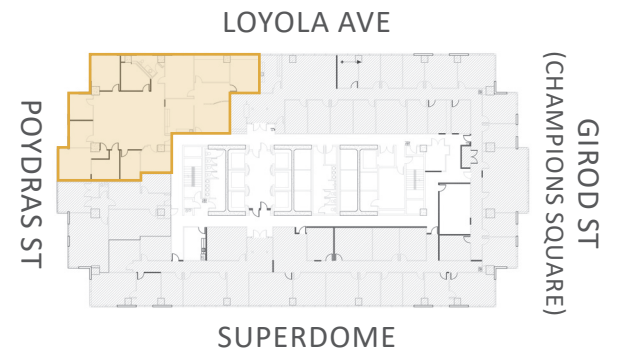
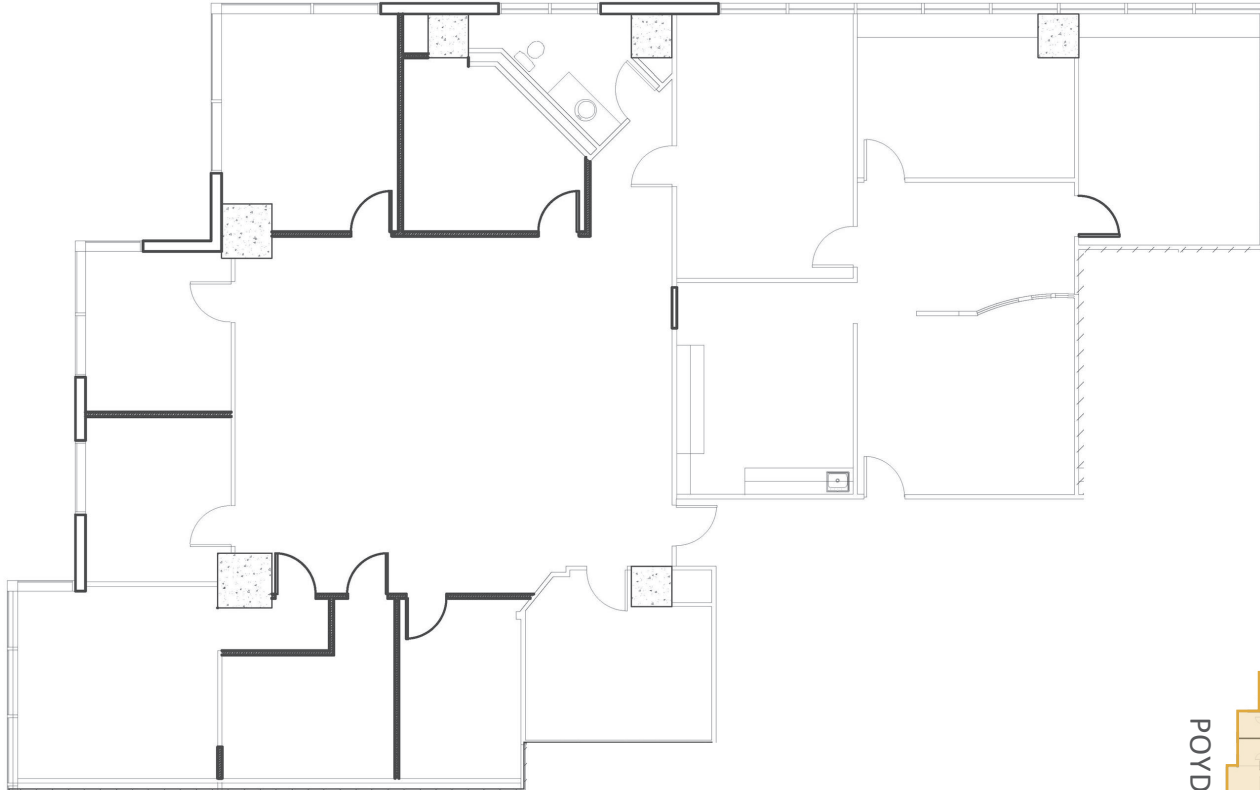
CORPORATE REALTY

Maureen Clary CPM®
mclary@corp-realty.com
504.493.6766

Michael J. Siegel SIOR
msiegel@corp-realty.com
504.581.5005

BENSON TOWER

AVAILABLE SPACE: 4,290 RSF



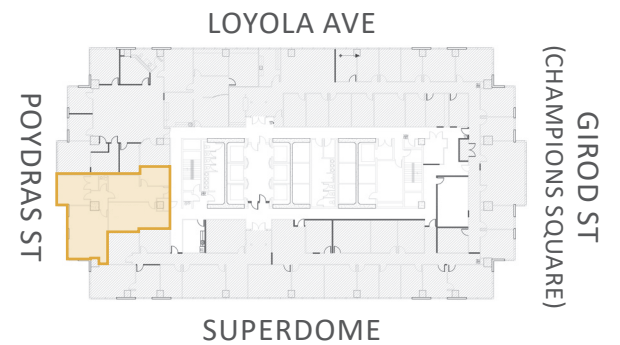
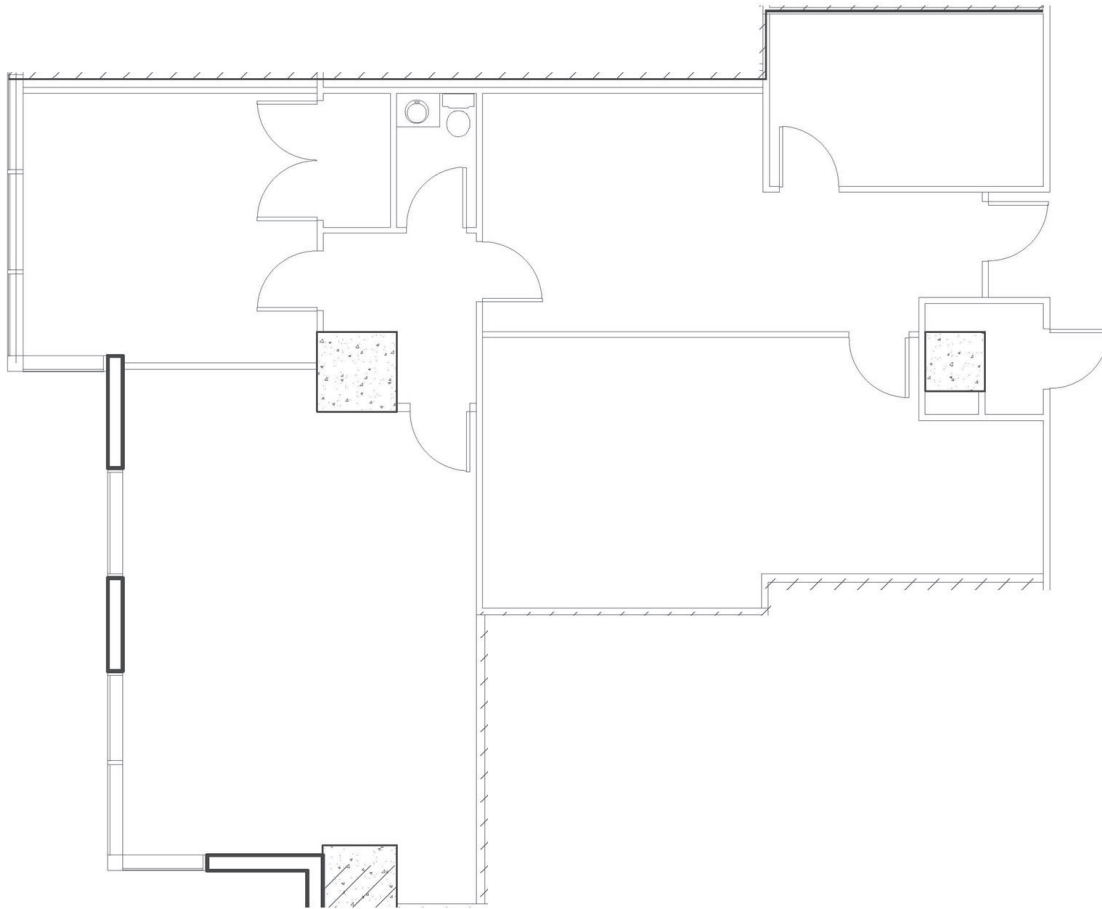
CORPORATE REALTY

Maureen Clary CPM®
mclary@corp-realty.com
504.493.6766

Michael J. Siegel S10R
msiegel@corp-realty.com
504.581.5005

BENSON TOWER

AVAILABLE SPACE: 1,822 RSF



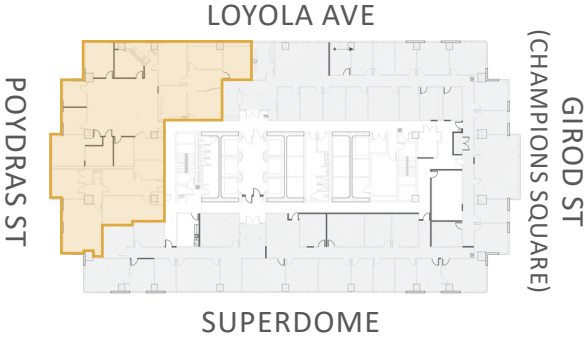
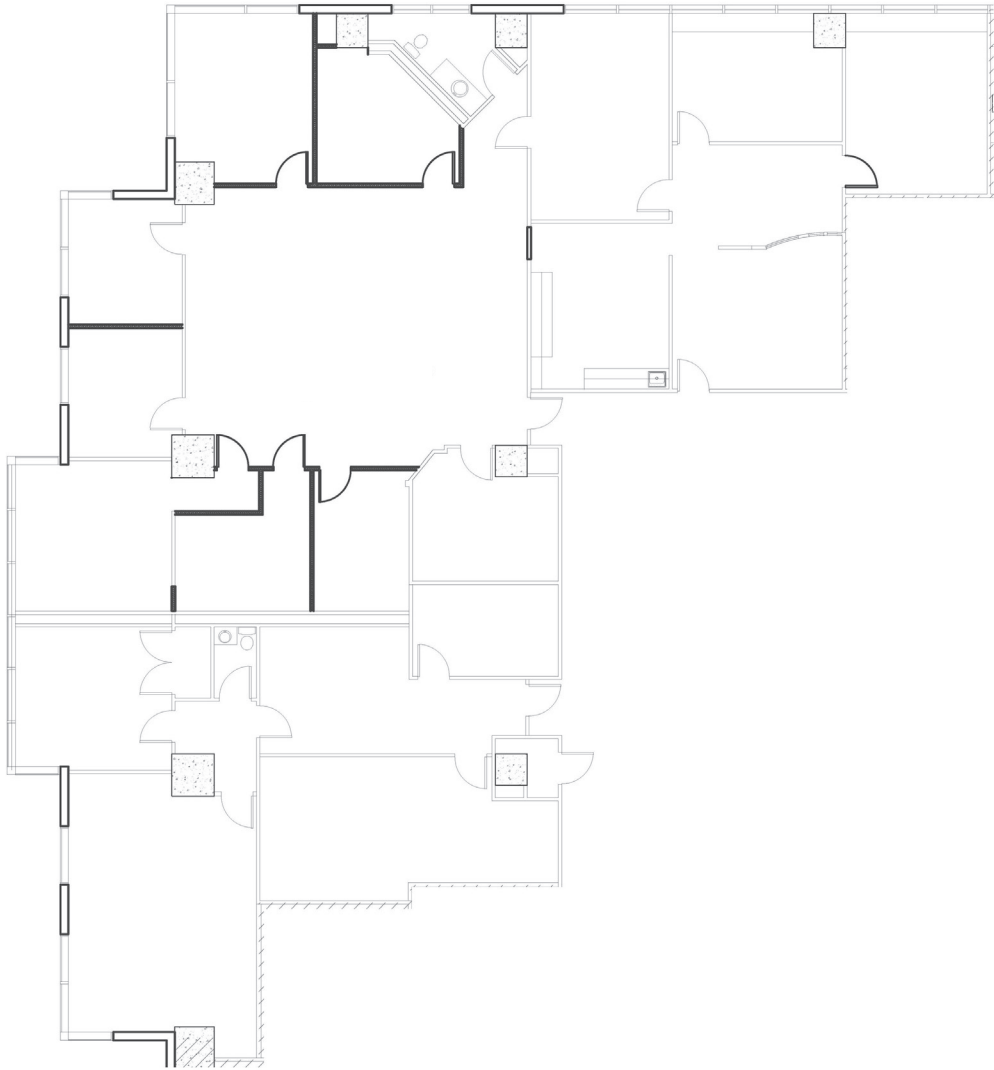
CORPORATE REALTY

Maureen Clary CPM®
mclary@corp-realty.com
504.493.6766

Michael J. Siegel S10R
msiegel@corp-realty.com
504.581.5005

BENSON TOWER

COMBINED SPACE: 6,112 RSF



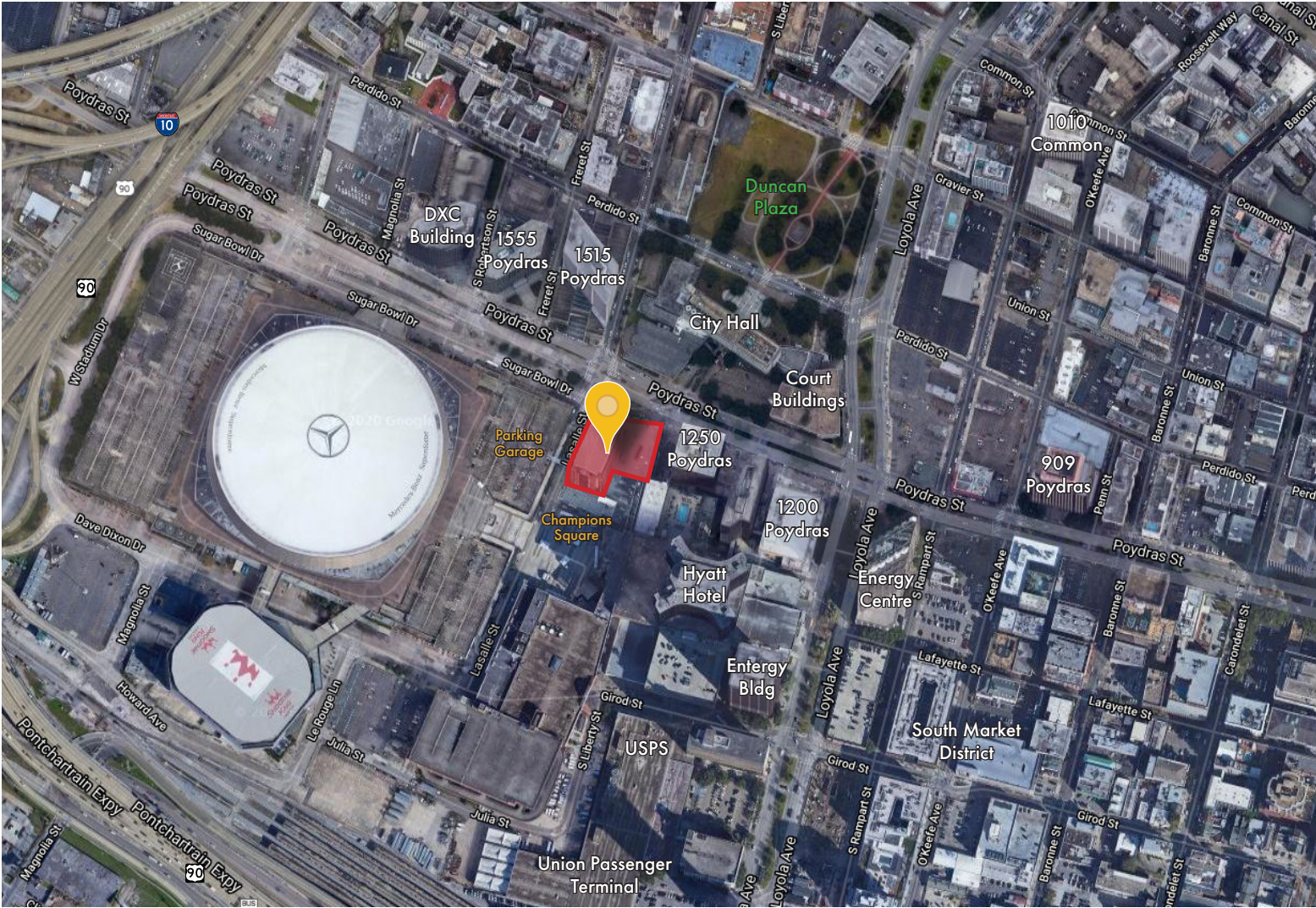
CORPORATE REALTY

Maureen Clary CPM®
mclary@corp-realty.com
504.493.6766

Michael J. Siegel S10R
msiegel@corp-realty.com
504.581.5005

BENSON TOWER

AERIAL MAP



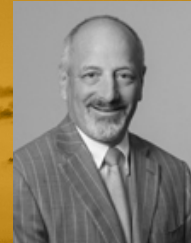
OFFICE SPACE | FOR LEASE

Touch Down in Benson Tower

1450 Poydras Street, New Orleans, LA 70112



Maureen Clary CPM®
mclary@corp-realty.com
504.493.6766



Michael J. Siegel S10R
msiegel@corp-realty.com
504.581.5005

CORPORATE REALTY

201 St. Charles Ave., Suite 4411, New Orleans, LA 70170
504.581.5005 | corp-realty.com

The information contained herein has been obtained from sources that we deem reliable. No representation or warranty is made as to the accuracy thereof, and it is submitted subject to errors, omissions, change of price, or other conditions, or withdrawal without notice. Licensed in Louisiana, 12/2020