

SANTA FE

COMMERCE CENTER

4719 4720
4731 4750

S. SANTA FE CIR.
ENGLEWOOD, CO 80110



4750 S. SANTA FE CIR. | UNIT 2

WAREHOUSE & FLEX SPACE FOR LEASE

PROPERTY OVERVIEW

| | |
|---|---|
| Unit Size: 1,600 SF | Clear Height: 14' 10" - 16' 2" |
| Office: 50% | Loading: One (1) Drive In Door 9'8" x 9'8" |
| Available: Immediately | Parking: 1.96:1,000 |
| Base Rent: \$2,066.67/month | Zoning: I-1 |
| Op. Exp. (2026): \$918.67/month | YOC: 2001 |
| Total Rent: \$2,985.34/month | |

HIGHLIGHTS

- Santa Fe Frontage / Visibility with excellent access to South Metro Denver
- Functional Unit Layout
- Drive-In Loading
- Favorable Neighborhood Demographics
- Abundant Retail Amenities in Area
- Business Park Atmosphere

T.J. SMITH, SIOR
+1 303 283 4576
tj.smith@colliers.com

NICK RICE
+1 720 833 4620
nick.rice@colliers.com

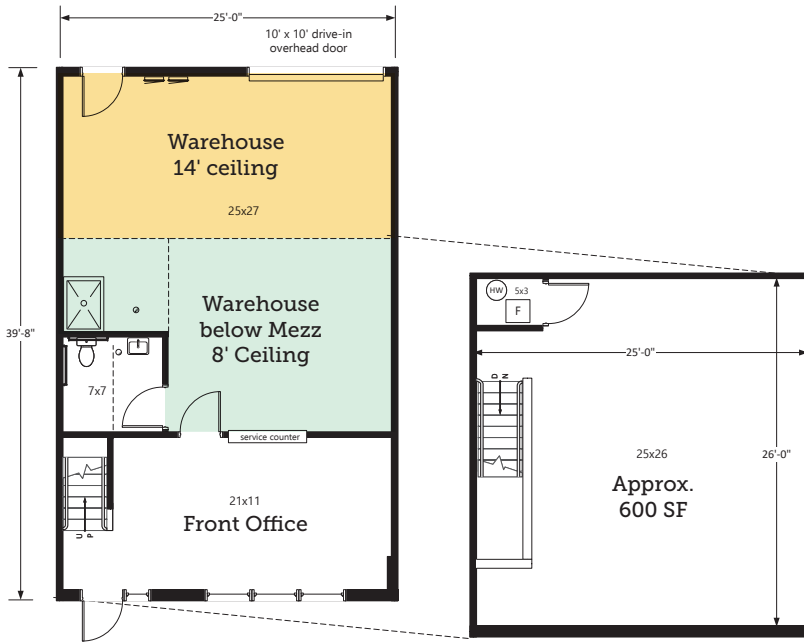
NICHOLAS NASHARR
+1 303 283 4563
nicholas.nasharr@colliers.com

NICOLA
WEALTH

Colliers

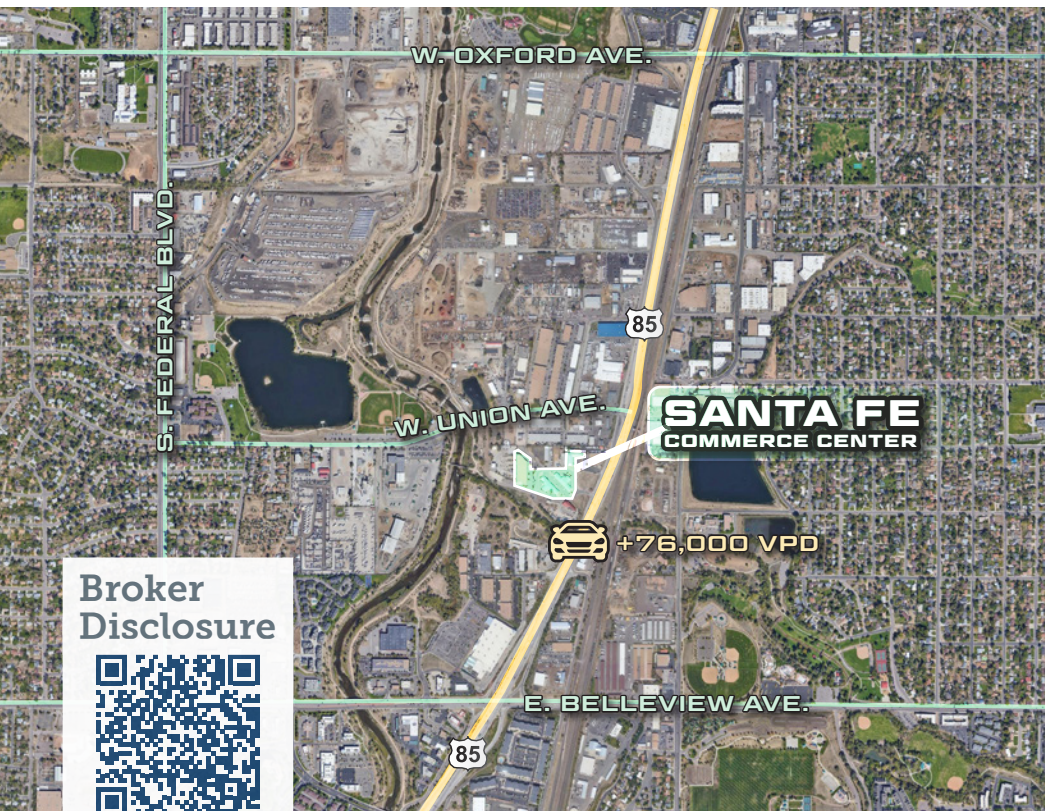
4750 S. SANTA FE CIR. | UNIT 2

1,600 SF



GROUND FLOOR

MEZZANINE



CONTACT US:

T.J. SMITH, SIOR
+1 303 283 4576
tj.smith@colliers.com

NICK RICE
+1 720 833 4620
nick.rice@colliers.com

NICHOLAS NASHARR
+1 303 283 4563
nicholas.nasharr@colliers.com



COLLIERS
4643 S. Ulster Street, Suite 1000
Denver, CO 80237
P: +1 303 745 5800
F: +1 303 745 5888

