



**29 Brook Mews North W2**  
2,500sq ft creative space in Paddington.





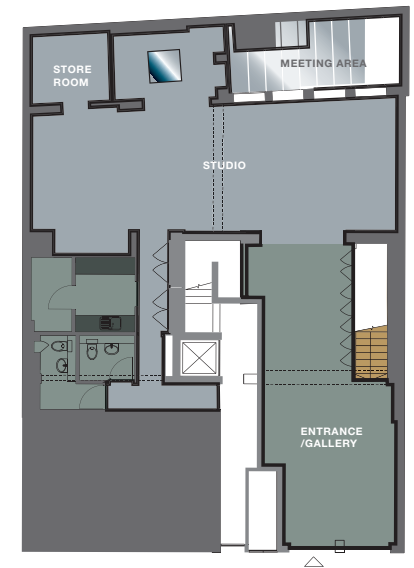
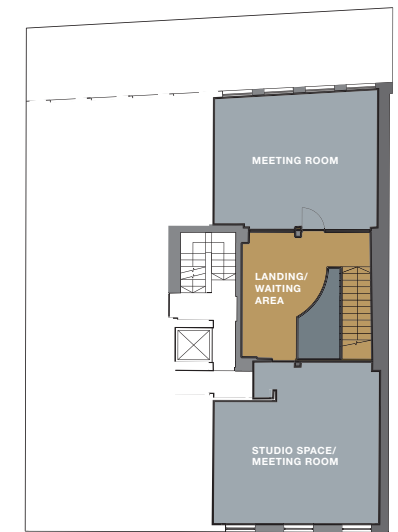
**2500sq ft\* of contemporary,  
creative studio space**

**The ground floor offers a large reception  
area and main studio in a spacious,  
light and airy environment. There is also  
a glass roofed, informal meeting area,  
storage areas, kitchen and toilets.**

**A large meeting room, waiting area and  
further studio are on the first floor.**

\*approx





**Ground floor: 1582 sq ft**  
 Studio space with meeting area  
 Store room  
 Toilets  
 Kitchen

**First floor: 915 sq ft**  
 Large landing/waiting area  
 Main meeting room  
 Additional studio space



Quiet and calm, yet minutes away from central London and connections to airports, tube and mainline stations.

Brook Mews North is a quiet road a few minutes from Hyde Park and Paddington.

Notting Hill, Kensington and central London are all easily accessible within a short walk or taxi ride or on public transport.







**Paddington Station and Hyde Park on your doorstep.**

Located in a quiet, pretty mews, ideally situated for public transport; Paddington, with Heathrow Express, Crossrail and Lancaster Gate tube stations are all a few minutes walk away.

Hyde Park and Kensington Gardens are a stone's throw away with the Serpentine Gallery, bicycle and walking routes.



**David Jackson**

davidjackson@pilcherhershman.co.uk

07801 415957

**Julian Wogman**

julianwogman@pilcherhershman.co.uk

07834 789346

"The Pilcher Hershman Partnership LLP on their behalf and for the Lessor of this property whose Agents they are, give notice that:

1. These particulars are set out as a general outline only for guidance to intending Lessees, and do not constitute any part of an offer or contract.
2. Whilst they have used reasonable endeavours to ensure that the information in these particulars is materially correct, any intending Lessees or Third Parties should not rely on them as statements or representations of fact, but must satisfy themselves by inspection, searches, enquiries, surveys or otherwise as to their accuracy. The Agents as such cannot be held responsible for any loss or damage including without limitation, indirect or consequential loss or damage, or any loss of profits resulting from direct or indirect actions based upon the content of these particulars.
3. No person in the employment of The Pilcher Hershman Partnership LLP has any authority to make any representation or warranty whatsoever in relation to this property.
4. Unless otherwise stated, all rents are correct at the date of publication and, unless otherwise stated, are quoted exclusive of VAT. Lease details and service charges are given as a guide only and should be checked and confirmed by your solicitor prior to exchange of contracts."

**PILCHER HERSHMAN**

**020 7399 8600**

**www.pilcherhershman.co.uk**

**17 SAVILE ROW LONDON W1S 3PN**