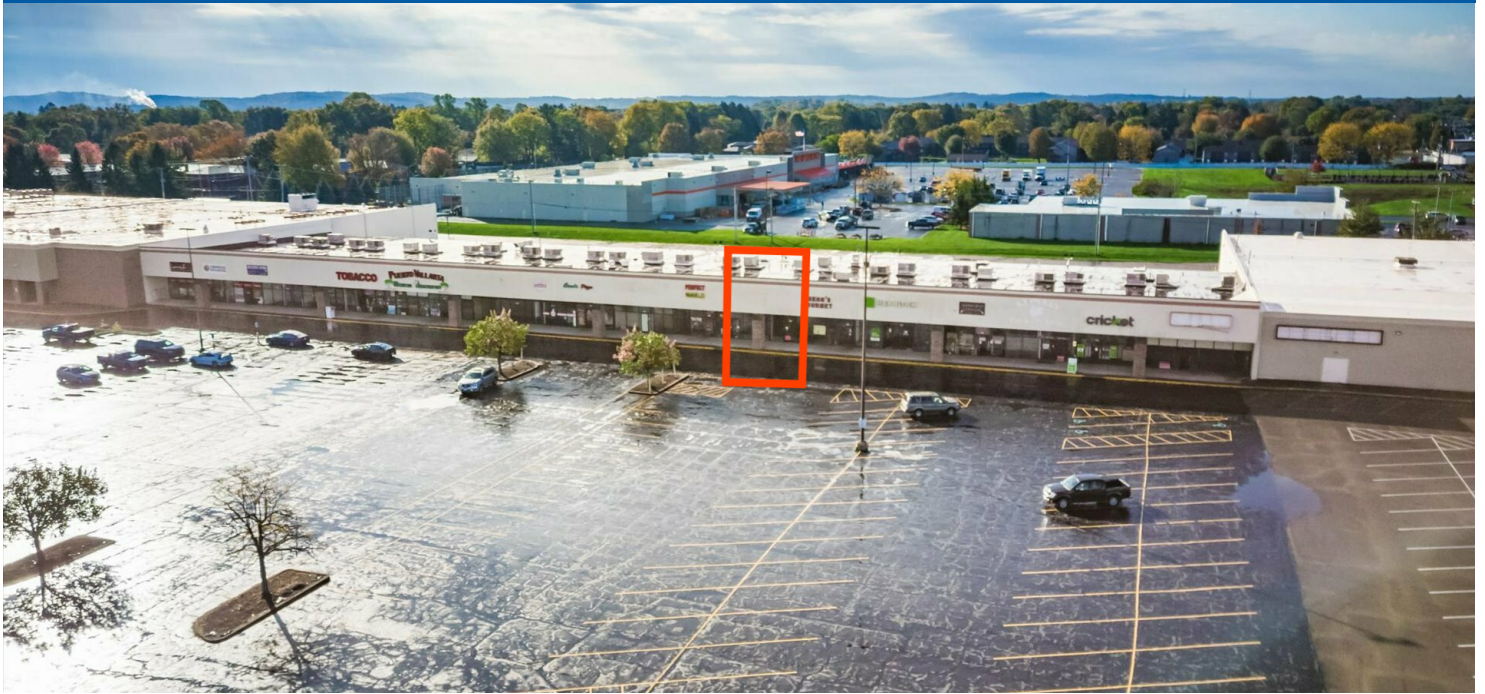




# 287 Deo Drive

Newark, OH 43055



## Offering Summary

Lease Rate:	\$10.00 SF/yr (Gross)
Building Size:	80,000 SF
Available SF:	2,183 SF

## Property Overview

Excellent retail opportunity! This strip center is strategically located on Deo Drive which connects N 21st Street the main shopping corridor to SR-13. Continuous road frontage, highly visible and great building and road signage available. Within close proximity to several national brand box stores and restaurants. Space offers 2,183 SF of space with an open floor plan in the front and office space in the rear of the unit.

## Location Overview

Excellent high visibility location along Deo Drive in Newark. Property is within a highly populated area along with several national brand business surrounded by single family and multi-family housing.





# 287 Deo Drive

Newark, OH 43055





# 287 Deo Drive

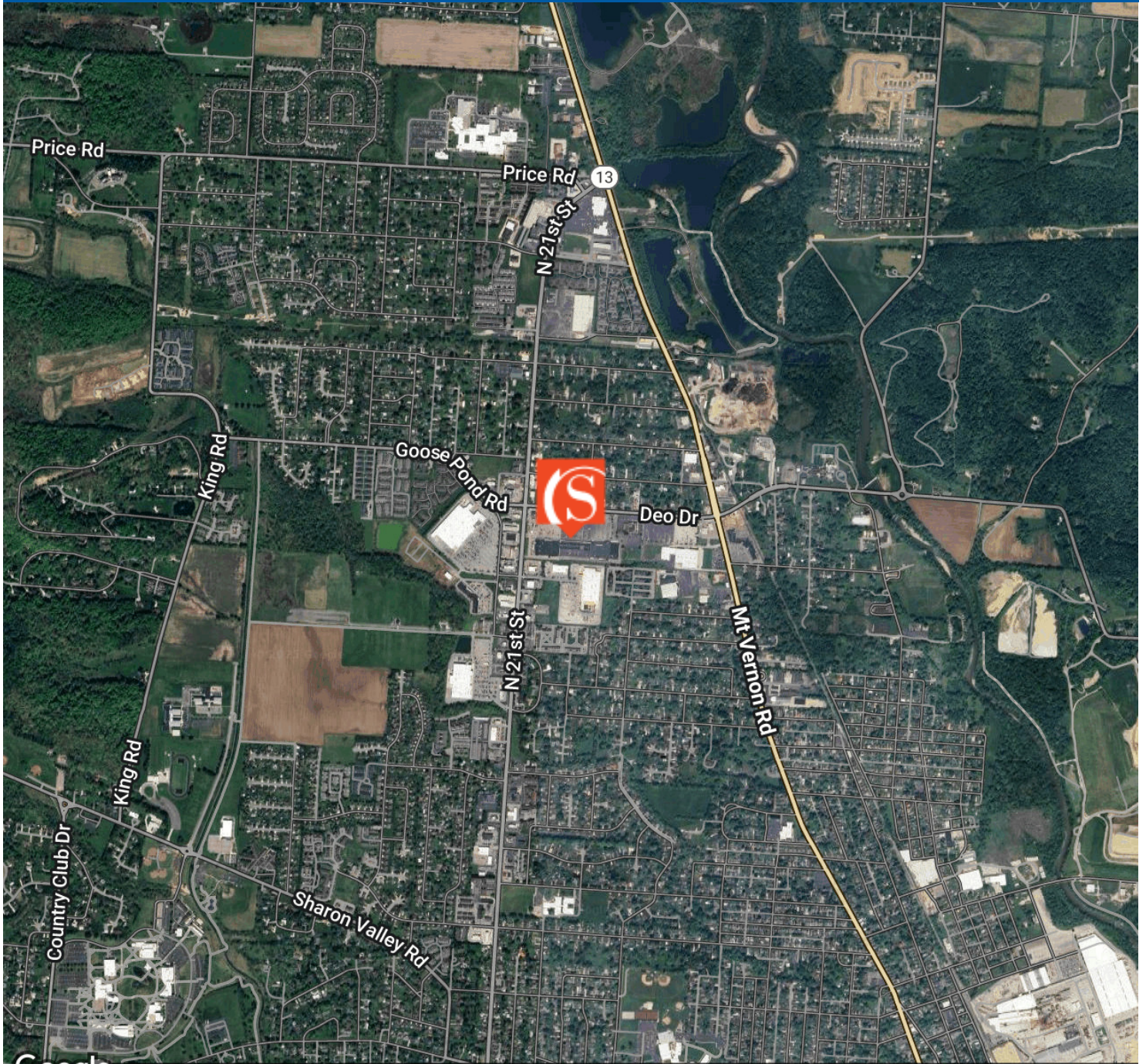
Newark, OH 43055





# 287 Deo Drive

Newark, OH 43055



Google

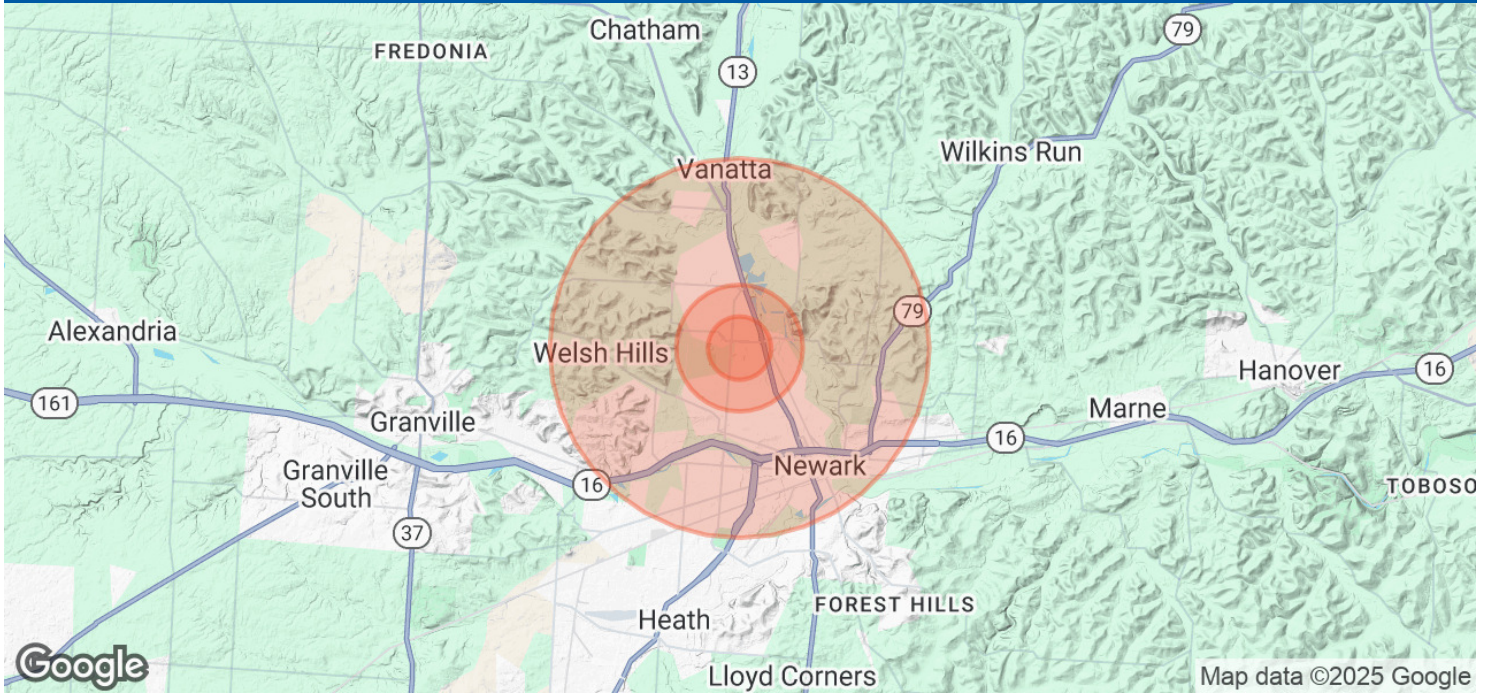
Map data ©2025 Imagery ©2025 Airbus, CNES / Airbus, Landsat / Copernicus, Maxar Technologies, USDA/FPAC/GEO





# 287 Deo Drive

Newark, OH 43055



**Population**

	0.5 Miles	1 Mile	3 Miles
Total Population	2,213	8,298	45,819
Average Age	44	45	41
Average Age (Male)	41	42	40
Average Age (Female)	46	47	43

**Households & Income**

	0.5 Miles	1 Mile	3 Miles
Total Households	1,086	3,881	19,221
# of Persons per HH	2	2.1	2.4
Average HH Income	\$69,885	\$73,559	\$78,380
Average House Value	\$184,816	\$193,507	\$193,097

Demographics data derived from AlphaMap

