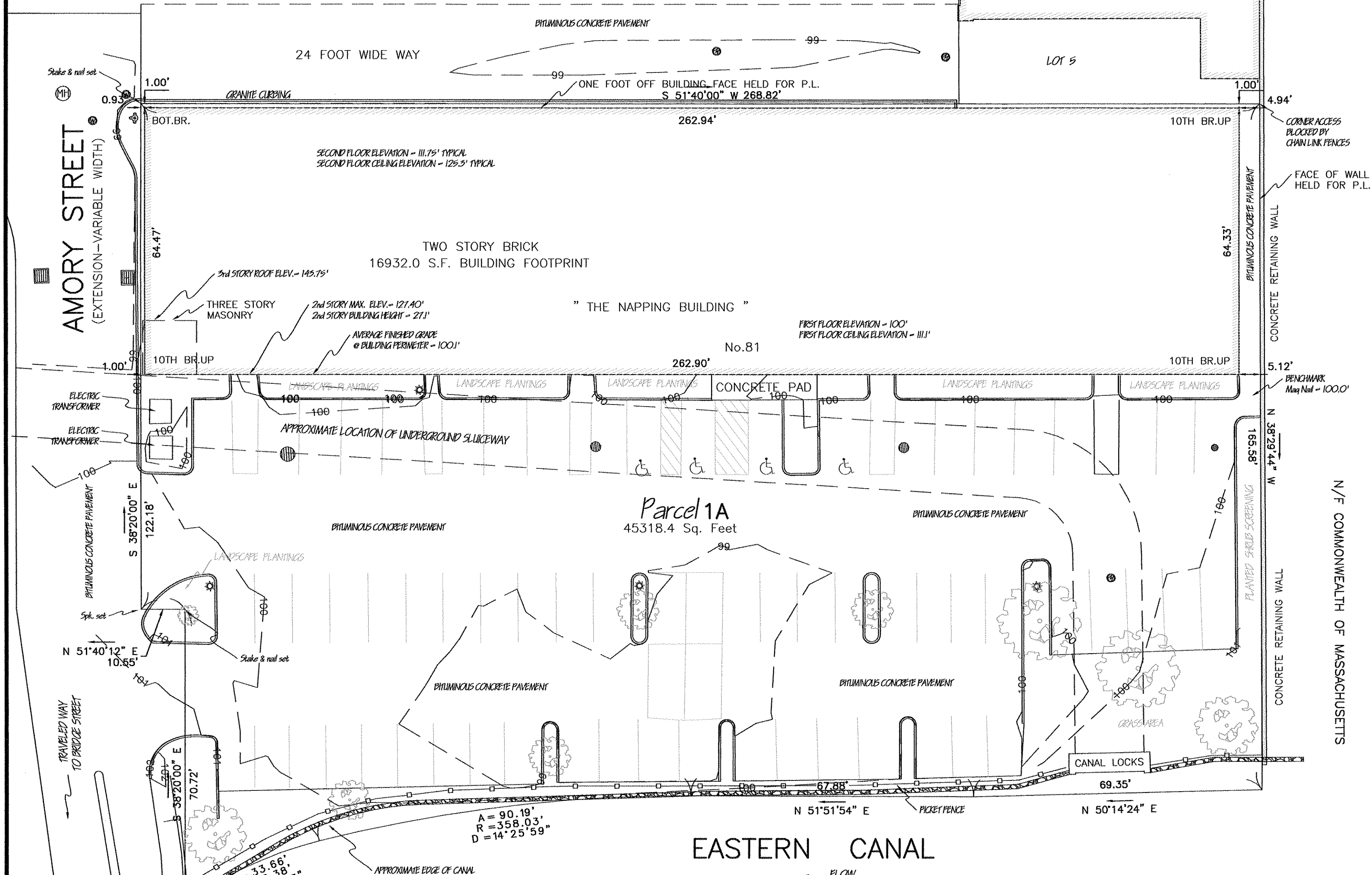


N/F MASSACHUSETTS MILLS 1 LIMITED PARTNERSHIP

PL.BK.101, PLAN 121B



PLAN NOTES:

- DEED REFERENCE USED: BK.6404, PAGE 212, NAPPING BUILDING LIMITED PARTNERSHIP.
- REFER TO EASEMENTS RECORDED IN :
BK.4531, PG.141 - RECIPROCAL EASEMENT FOR ACCESS & UTILITIES WITH NORTHEASTERLY & SOUTHEASTERLY ABUTTER.
BK.4968, PG.049 - RECIPROCAL EASEMENT,(UTILITY EASEMENT FOR GAS, SEWER, ELECTRIC, TELEPHONE & WATER) WITH NORTHEASTERLY & SOUTHEASTERLY ABUTTER.
BK.6726,PG.243 - EXCLUSIVE RIGHT AND EASEMENT FOR PARKING SPACES SHOWN ON CONDOMINIUM SITE PLAN ON FILE WITH THE MASTER DEED RECORDED IN BK.4960, PAGE 3
- REFER TO PLANS RECORDED:
PL.BK.90, PG.161
PL.BK.101, PLAN 121B
PL.BK.166, PLAN 114
PL.BK.162, PLAN 138
PL.BK.170, PG.62
PL.BK.187, PG.96
PL.BK.143, PG.41
- BY HORIZONTAL SCALING ONLY, LOCUS LIES WITH FLOOD ZONE X, AREAS DETERMINED TO BE OUTSIDE THE 0.2% ANNUAL CHANCE FLOODPLAIN, ON FEMA FIRM DATED: JUNE 4, 2010, PANEL NO.25017C0143E.
- LOCATION OF UNDERGROUND SLUICeway AS SHOWN IS APPROXIMATE ONLY AND WAS SCALED FROM PL.BK.166, PG.114.
- ACCESS TO LOCUS FROM BRIDGE STREET IS CURRENTLY OBTAINED OVER AMORY STREET EXTENSION.
- BUILDING COVERAGE = $16,932/45,318.4 = 37.4\%$
- LOCUS CONTAINS 67 PARKING SPACES TOTAL (INCLUDES 4 MARKED HANDICAP SPACES)
- FOR BUILDING USE DESIGNATION AND TOTAL SQUARE FOOTAGE OF FLOOR SPACE FOR EACH USE SEE PLANS BY RAV & ASSOC., INC DATED: 9/20/2011.
- NO MARKERS WERE SET FOR LOT CORNERS OR ANGLE POINTS ALONG THE NORTHWESTERLY LOT LINE AS THESE POINTS FALL WITHIN THE EXISTING "EASTERN CANAL".
- EXISTING TRAFFIC ISLANDS ARE MULCH OR GRASS COVERED. TREES ARE AS SHOWN ON ISLANDS AND GROUNDS.

LEGEND

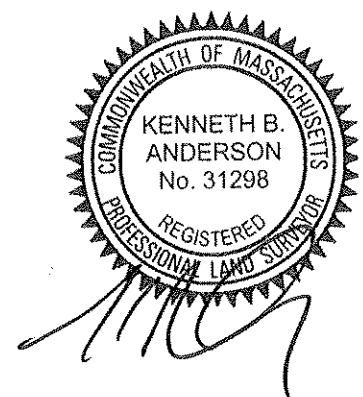
- These standard symbols will be found in the drawing.
- DECIDUOUS TREE
 - MANHOLE
 - WATER GATE
 - FIRE HYDRANT
 - LIGHT
 - SQUARE CATCH BASIN
 - ROUND CATCH BASIN
 - HANDICAP SYMBOL

Plan of Building Location
81 Bridge Street, Lowell,
North Middlesex County, MA

SEP.20, 2011 Scale: 1" = 20'
REV. SEP.30, 2011



© 2011 ALL RIGHTS RESERVED
ANDERSON SURVEYS, INC.
Professional Land Surveyors
800 HIGH STREET
HANSON, MA 02341-0149



Kenneth B. Anderson, PLS # 31298

Assessed Owner:
Napping Building Limited Partnership
C/O Napping Condo Trust
150 Mass Mill Drive
Lowell, MA 01852