**\$90,000**7000 Commercial Way  
Weeki Wachee, FL 34613

MLS #: 2183224



## Commercial Lots & Land

Commercial Property is 51.22' x 300', adjoining 3 lots are available a total of 1.41 acres (204.88'x300') \$90,000 each. You can purchase together or separate. The property is located close to Weeki Wachee Springs, home of the Mermaids. Publix Shopping Center, & Winn Dixie, Walgreens and Suntrust Bank, Bank of America Close by. Zoned C-2, Fast growing area. 1/2 mile north of Hwy 50 (Cortez Blvd), close to all amenities, shopping and Suncoast Parkway just minutes from Tampa area.

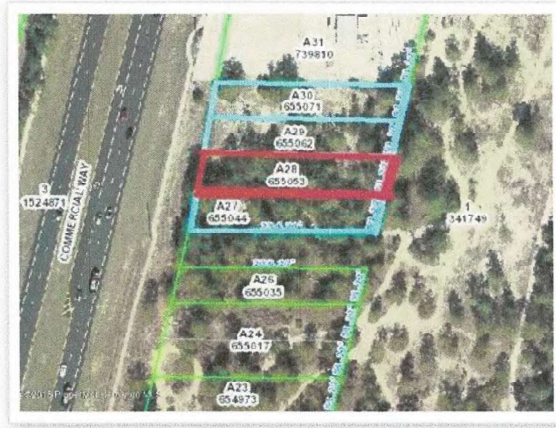
## Property Features

- **Acreage Info:** Over 1/4 to 1/2 Acre
- **Approx Road Frontage:** 51
- **County/Area:** Hernando County
- **Directions:** 1/2 Mile North of Cortez Blvd (Hwy 50) on Right side.
- **Elementary School:** Winding Waters K-8
- **High School:** Weeki Wachee
- **Listing Status:** Active
- **Lot:** A270
- **Lot Description:** Flat
- **Lot Dimension Source:** Tax Rolls
- **Lot Dimensions:** 51.22x300
- **Lot Size:** 0.3500
- **Lot SqFt:** 15366.00
- **Middle School:** Winding Waters K-8
- **Paved Road:** Yes
- **Power Source:** Needed
- **Property Type:** Commercial Lots & Land
- **Road Frontage Type:** US Highway
- **School Year From:** 2016
- **School Year To:** 2017
- **Sewer:** Hookup Avail/Sewer
- **Sub Type:** Commercial
- **Subdivision:** Commercial Highlands Us 19
- **Subdivision/Neighborhood:** Commercial Highlands Us 19
- **Tax Year:** 2018
- **Taxes:** 103.29
- **Utilities:** Cable Available, DSL Available, None
- **Water:** Needed
- **Zip Code:** 34613
- **Zoning:** C2



Virginia Zanti  
Broker/Associate  
Cell: 352-238-6498  
Website: [diamondvirginia.com](http://diamondvirginia.com)  
email: [vzanti@yahoo.com](mailto:vzanti@yahoo.com)

As your **BROKER/ASSOCIATE**, I will go the extra mile in helping you purchase a new home or sell your existing home.



**\$90,000**

**7004 Commercial Way  
Weeki Wachee, FL 34613**

**MLS #: 2183225**



## Commercial Lots & Land

Commercial Property is 51.22' x 300', adjoining 3 lots are available a total of 1.41 acres (204.88'x300') \$90,000 each. You can purchase together or separate. The property is located close to Weeki Wachee Springs, home of the Mermaids. Publix Shopping Center, & Winn Dixie, Walgreens and Suntrust Bank, Bank of America Close by. Zoned C-2, Fast growing area. 1/2 mile north of Hwy 50 (Cortez Blvd), close to all amenities, shopping and Suncoast Parkway just minutes from Tampa area.

## Property Features

- **Acreage Info:** Over 1/4 to 1/2 Acre
- **Approx Road Frontage:** 51
- **County/Area:** Hernando County
- **Directions:** 1/2 Mile North of Cortez Blvd (Hwy 50) on Right side.
- **Elementary School:** Winding Waters K-8
- **High School:** Weeki Wachee
- **Listing Status:** Active
- **Lot:** A280
- **Lot Description:** Flat, Wooded
- **Lot Dimension Source:** Tax Rolls
- **Lot Dimensions:** 51.22x300
- **Lot Size:** 0.3500
- **Lot SqFt:** 15366.00
- **Middle School:** Winding Waters K-8
- **Paved Road:** Yes
- **Power Source:** Needed
- **Property Type:** Commercial Lots & Land
- **Road Frontage Type:** US Highway
- **School Year From:** 2016
- **School Year To:** 2017
- **Sewer:** Hookup Avail./Sewer
- **Sub Type:** Commercial
- **Subdivision:** Commercial Highlands Us 19
- **Subdivision/Neighborhood:** Commercial Highlands Us 19
- **Tax Year:** 2018
- **Taxes:** 103.29
- **Utilities:** Cable Available, DSL Available, None
- **Water:** Needed
- **Zip Code:** 34613
- **Zoning:** C2



**Virginia Zanti**  
**Broker/Associate**  
**Cell: 352-238-6498**  
**Website: diamondvirginia.com**  
**email: vzanti@yahoo.com**

As your **BROKER/ASSOCIATE**, I will go the extra mile in helping you purchase a new home or sell your existing home.

**\$90,000****7008 Commercial Way  
Weeki Wachee, FL 34613****MLS #: 2183226**

## Commercial Lots & Land

Commercial Property is 51.22' x 300', adjoining 3 lots are available a total of 1.41 acres (204.88'x300') \$90,000 each. You can purchase together or separate. The property is located close to Weeki Wachee Springs, home of the Mermaids, Publix Shopping Center, & Winn Dixie, Walgreens and Suntrust Bank, Bank of America Close by. Zoned C-2, Fast growing area. 1/2 mile north of Hwy 50 (Cortez Blvd), close to all amenities, shopping and Suncoast Parkway just minutes from Tampa area.

## Property Features

- **Acreage Info:** Over 1/4 to 1/2 Acre
- **Approx Road Frontage:** 51
- **County/Area:** Hernando County
- **Directions:** 1/2 Mile North of Cortez Blvd (Hwy 50) on Right side.
- **Elementary School:** Winding Waters K-8
- **High School:** Weeki Wachee
- **Listing Status:** Active
- **Lot:** A290
- **Lot Description:** Flat, Wooded
- **Lot Dimension Source:** Tax Rolls
- **Lot Dimensions:** 51.22x300
- **Lot Size:** 0.3500
- **Lot SqFt:** 15366.00
- **Middle School:** Winding Waters K-8
- **Paved Road:** Yes
- **Power Source:** Needed
- **Property Type:** Commercial Lots & Land
- **Road Frontage Type:** US Highway
- **School Year From:** 2016
- **School Year To:** 2017
- **Sewer:** Hookup Avail/Sewer
- **Sub Type:** Commercial
- **Subdivision:** Commercial Highlands Us 19
- **Subdivision/Neighborhood:** Commercial Highlands Us 19
- **Tax Year:** 2018
- **Taxes:** 103.29
- **Utilities:** Cable Available, DSL Available, None
- **Water:** Needed
- **Zip Code:** 34613
- **Zoning:** C2



Virginia Zanti  
Broker/Associate  
Cell: 352-238-6498  
Website: [diamondvirginia.com](http://diamondvirginia.com)  
email: [vzanti@yahoo.com](mailto:vzanti@yahoo.com)

As your BROKER/ASSOCIATE, I will go the extra mile in helping you purchase a new home or sell your existing home.

**\$90,000**7012 Commercial Way  
Weeki Wachee, FL 34613

MLS #: 2183227



## Commercial Lots & Land

Commercial Property is 51.22' x 300', adjoining 3 lots are available a total of 1.41 acres (204.88'x300') \$90,000 each. You can purchase together or separate. The property is located close to Weeki Wachee Springs, home of the Mermaids, Publix Shopping Center, & Winn Dixie, Walgreens and Suntrust Bank, Bank of America Close by. Zoned C-2, Fast growing area. 1/2 mile north of Hwy 50 (Cortez Blvd), close to all amenities, shopping and Suncoast Parkway just minutes from Tampa area.

## Property Features

- **Acreage Info:** Over 1/4 to 1/2 Acre
- **Approx Road Frontage:** 51
- **County/Area:** Hernando County
- **Directions:** 1/2 Mile North of Cortez Blvd (Hwy 50) on Right side.
- **Elementary School:** Winding Waters K-8
- **High School:** Weeki Wachee
- **Listing Status:** Active
- **Lot:** A300
- **Lot Description:** Flat
- **Lot Dimension Source:** Tax Rolls
- **Lot Dimensions:** 51.22x300
- **Lot Size:** 0.3500
- **Lot SqFt:** 15366.00
- **Middle School:** Winding Waters K-8
- **Paved Road:** Yes
- **Power Source:** Needed
- **Property Type:** Commercial Lots & Land
- **Road Frontage Type:** US Highway
- **School Year From:** 2016
- **School Year To:** 2017
- **Sewer:** Hookup Avail / Sewer
- **Sub Type:** Commercial
- **Subdivision:** Commercial Highlands Us 19
- **Subdivision/Neighborhood:** Commercial Highlands Us 19
- **Tax Year:** 2018
- **Taxes:** 103.29
- **Utilities:** Cable Available, DSL Available, Electric Available
- **Water:** Needed
- **Zip Code:** 34613
- **Zoning:** C2



Virginia Zanti  
Broker/Associate  
Cell: 352-238-6498  
Website: [diamondvirginia.com](http://diamondvirginia.com)  
email: [vzanti@yahoo.com](mailto:vzanti@yahoo.com)

As your BROKER/ASSOCIATE, I will go the extra mile in helping you purchase a new home or sell your existing home.