

1155 F STREET

TROPHY DESIGN | EFFICIENT PERFORMANCE





Douglas Development

CORPORATION

For over three decades, Douglas Development Corporation has garnered redevelopment successes in the District of Columbia, as well as in suburban Virginia and Maryland. Douglas Development has earned a reputation for revitalizing underdeveloped, emerging areas and continues to win praise from local government authorities, community members, neighbors, and the real estate community at large.



Dominating F Street between 11th and 12th Streets NW, 1155 F Street is the perfect blend of history and performance. Designed in 2009 by architects Shalom Barnes and Pei, Cobb, Freed & Partners, the building is a stunning showcase of a modern and efficient office building artfully merged with the charisma of seven historic row homes via a breathtaking atrium.



TOSCA



NEIGHBORHOOD + CONVENIENCE

In the heart of DC's East End, 1155 F Street offers one of the most compelling arrays of service amenities, high-end dining options, retailers, museums and transportation options within just steps from the building's front doors.



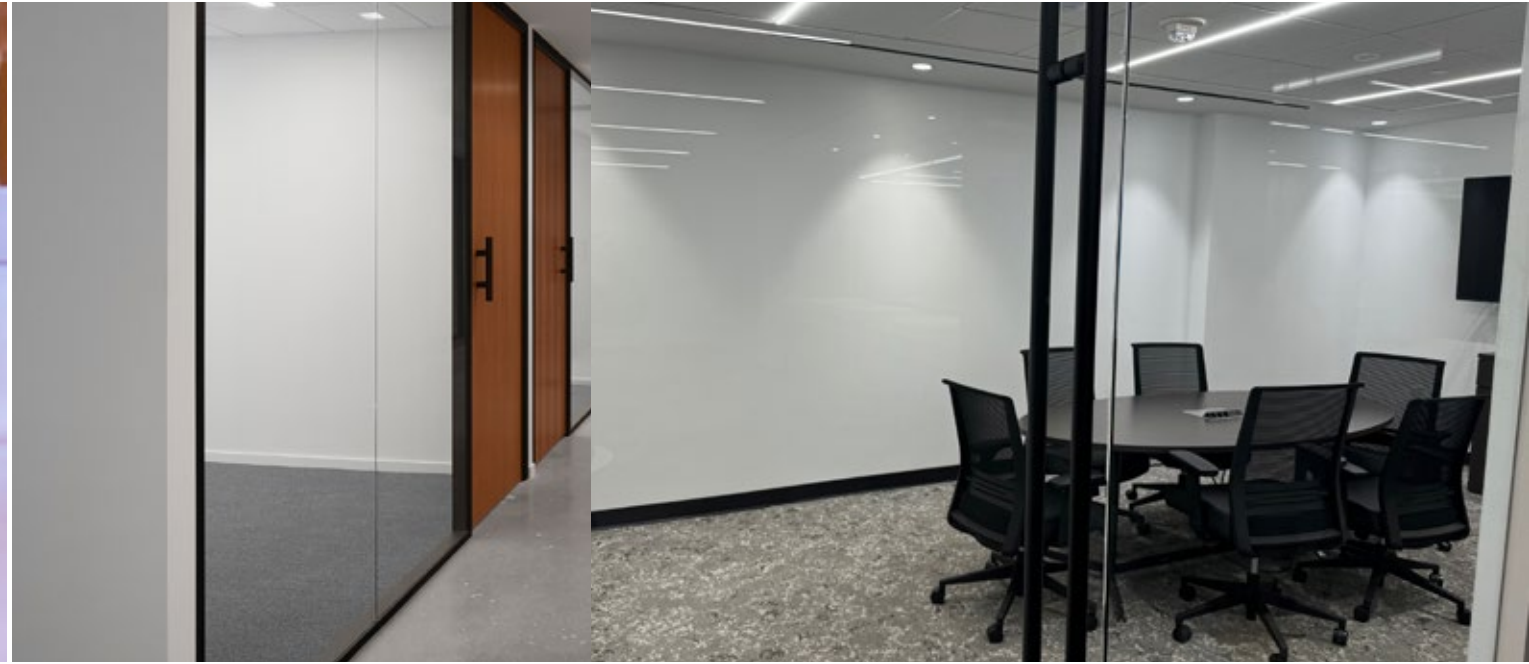
DESIGN + PERFORMANCE

- Size: 260,000 RSF
- Floor-to-ceiling glass curtain wall system
- 30' by 30' column spacing
- New Conference Center Available for all tenants
- State-of-the-art fitness center
- Fully renovated with spectacular views
- 24-hour lobby attendant
- Three levels of underground parking

HOSPITALITY + REFINEMENT

In early 2020, 1155 F delivered a series of modern, well-appointed and thoughtful renovations to the rooftop terrace, and main atrium lobby that included:

- Full renovation of and enhancements to the rooftop terrace and interior common areas serving the rooftop terrace, including new plantings, furnishings and technology, as well as renovation of the interior breakout areas and restrooms serving the rooftop terrace; and
- Enhancements to the main lobby, to include new furnishings, lighting elements and technology.



ROOF TERRACE



1155 F STREET

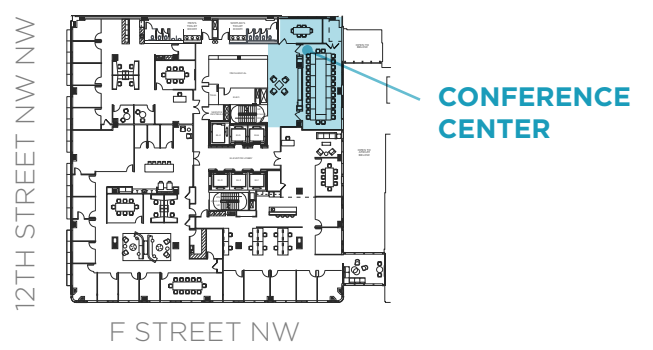


1155 F STREET

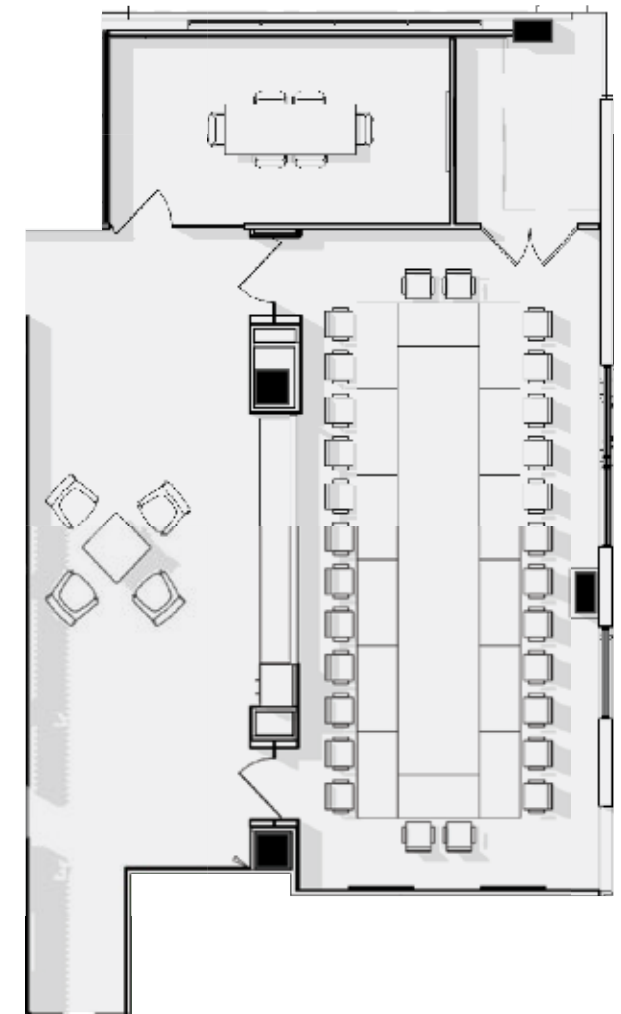


1155 F STREET

CONFERENCE CENTER



3RD FLOOR



55
CLASSROOM LAYOUT

28
BOARDROOM LAYOUT

AVAILABILITIES

5TH FLOOR
SUITE A - 4,148 RSF
JUST DELIVERED!

BRAND NEW SPEC SUITE

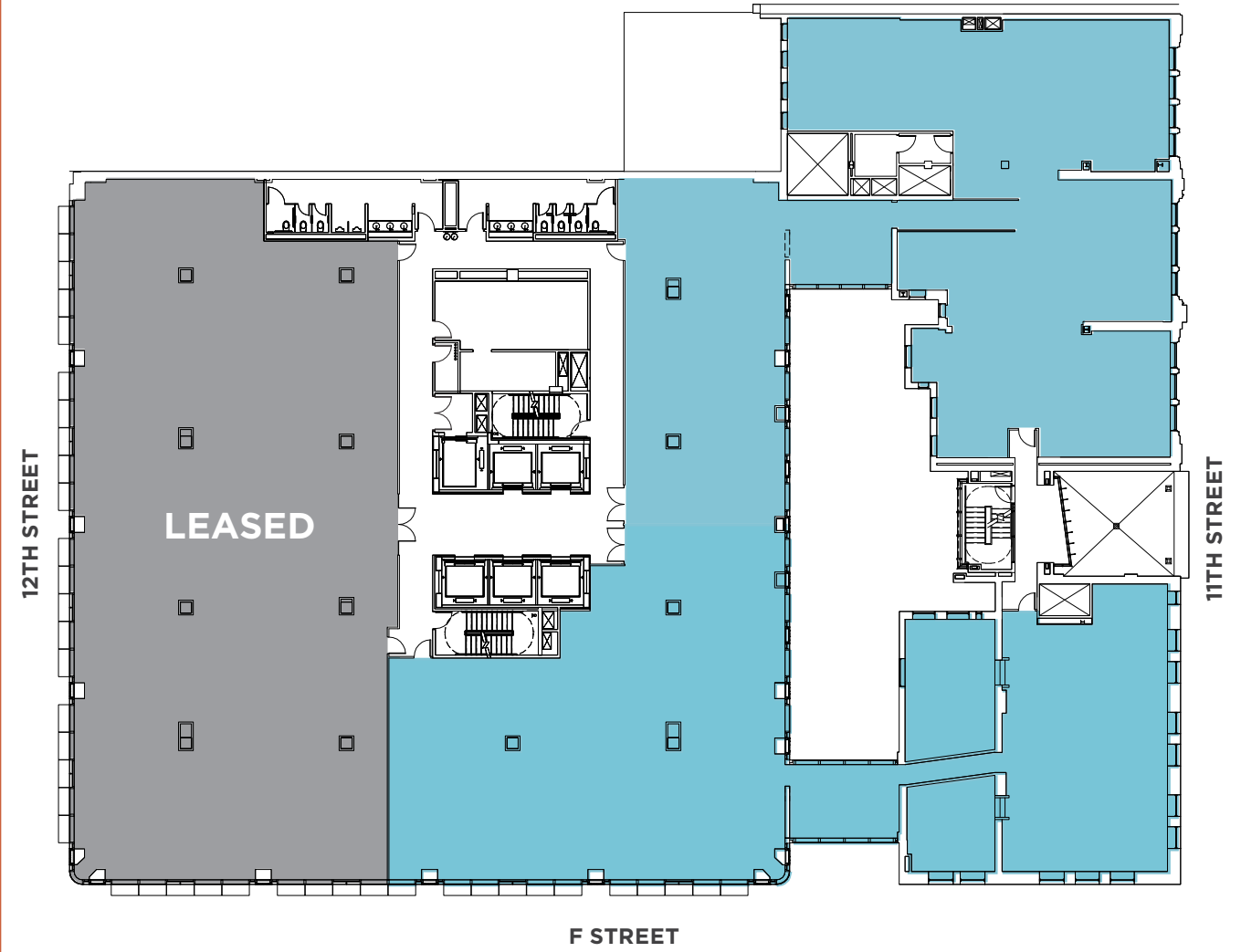


1155 F STREET

14

AVAILABILITIES

6TH FLOOR
16,976 RSF
AVAILABLE IMMEDIATELY



1155 F STREET

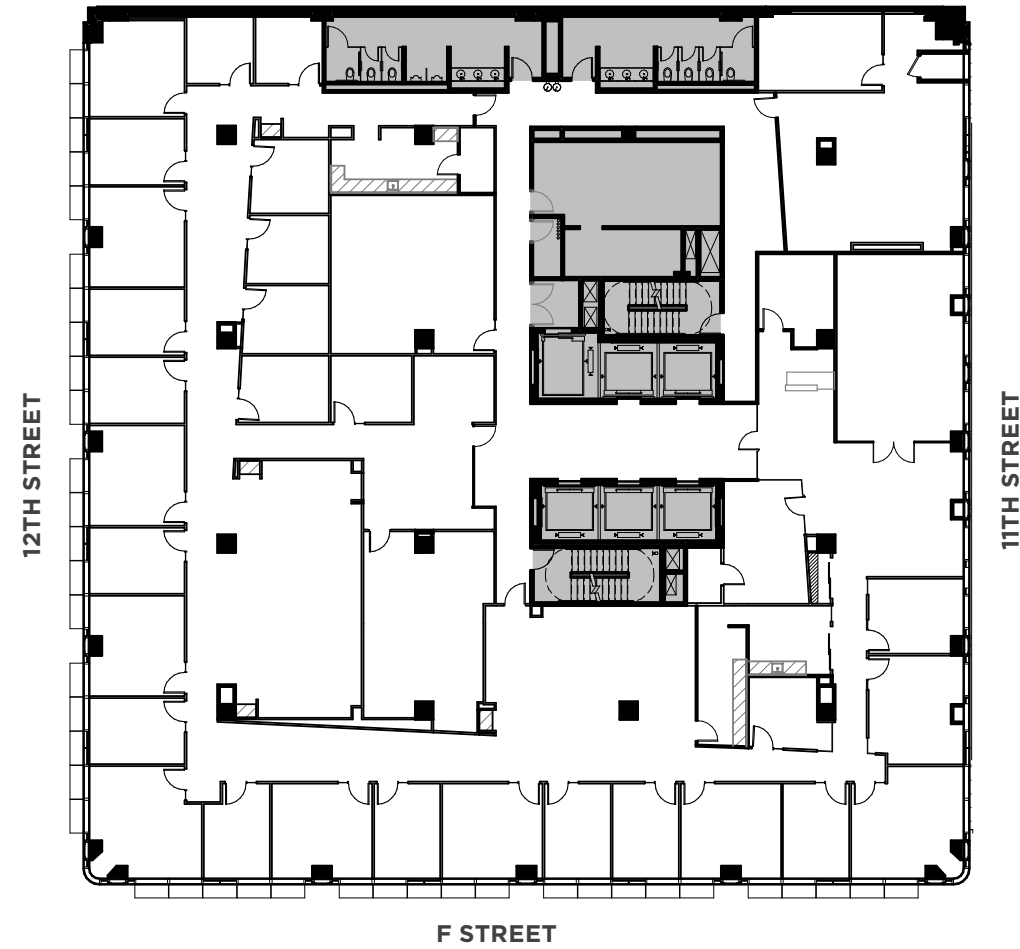
15

AVAILABILITIES

8TH FLOOR

17,259 RSF

AVAILABLE IMMEDIATELY



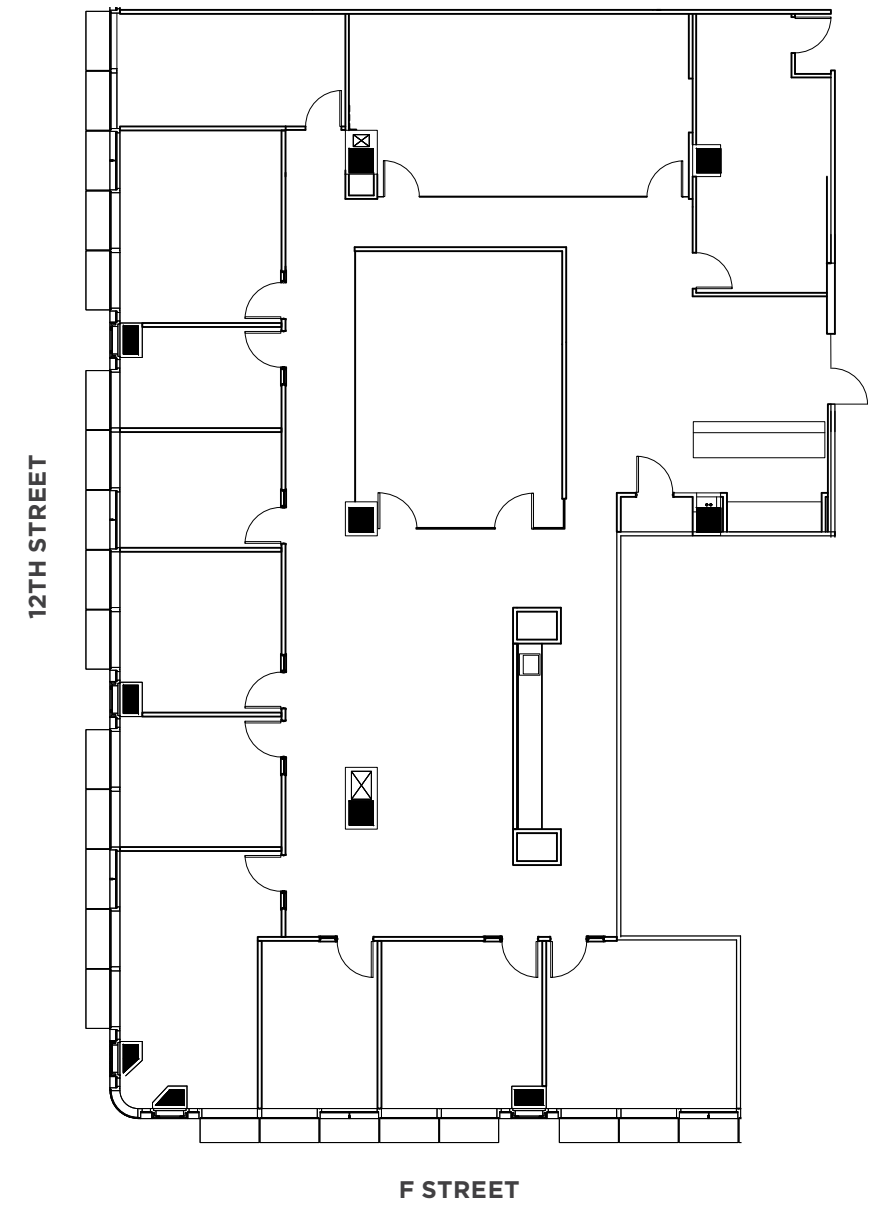
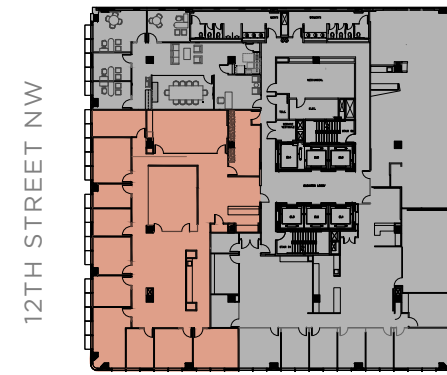
AVAILABILITIES

9TH FLOOR

SPEC SUITE

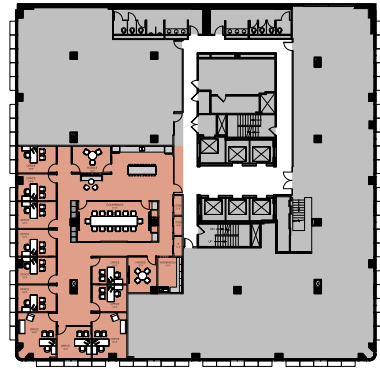
6,415 RSF

AVAILABLE IMMEDIATELY



AVAILABILITIES

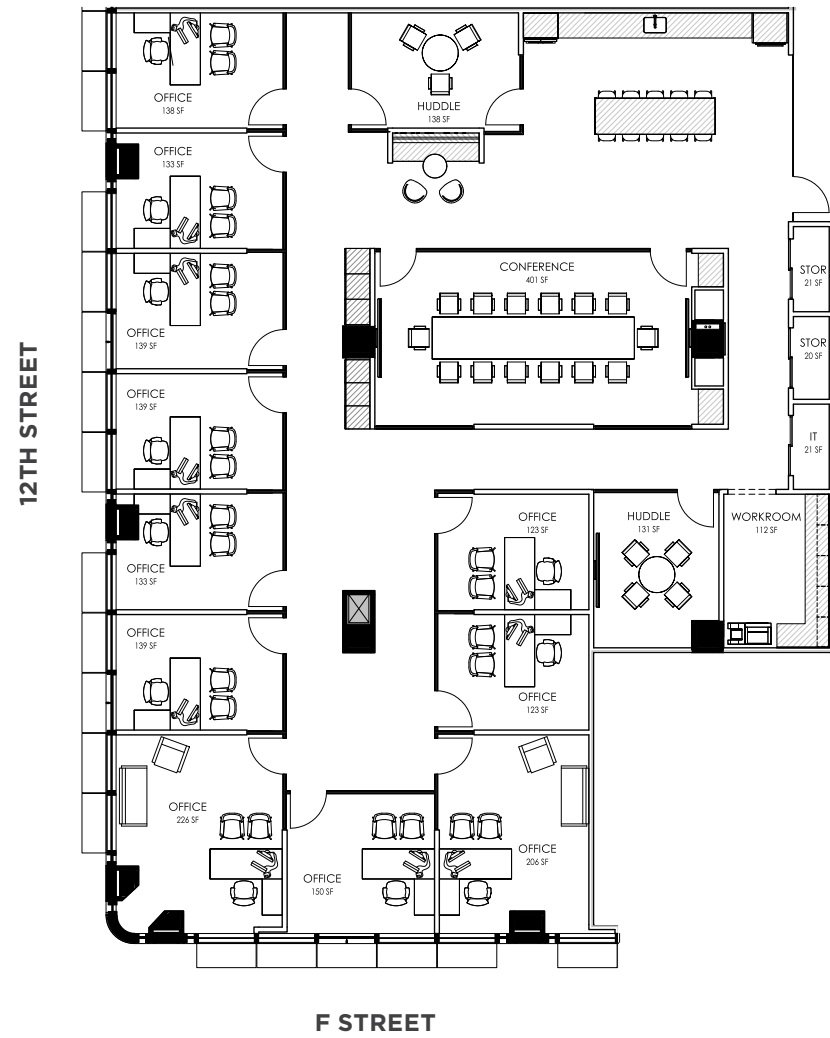
12TH STREET NW



11TH FLOOR

5,703 RSF

BRAND NEW SPEC SUITE
DELIVERING AUGUST 2026



1155 F STREET

TROPHY DESIGN + EFFICIENT PERFORMANCE

1155 F Street, NW | Washington, DC 20004

FOR MORE INFORMATION PLEASE CONTACT:

Bruce Pascal | bruce.pascal@cushwake.com | (202) 463 2100

Mark Wooters | mark.wooters@cushwake.com | (202) 463 2100

Gina Damond | gina.damond@cushwake.com | (202) 407 8127

