

# AERO | ALAMEDA POINT 2,000-3,000 SF OF RETAIL SPACE



Jeff Badstubner  
BRE License # 01155279  
[jeff.badstubner@am.jll.com](mailto:jeff.badstubner@am.jll.com)  
415-395-4900

Jones Lang LaSalle Brokerage, Inc.  
Real Estate License #01856260  
One Front Street, Suite 2000  
San Francisco, CA 94111

Jones Lang LaSalle © 2021 Jones Lang LaSalle IP, Inc. All rights reserved



# AERO | ALAMEDA POINT

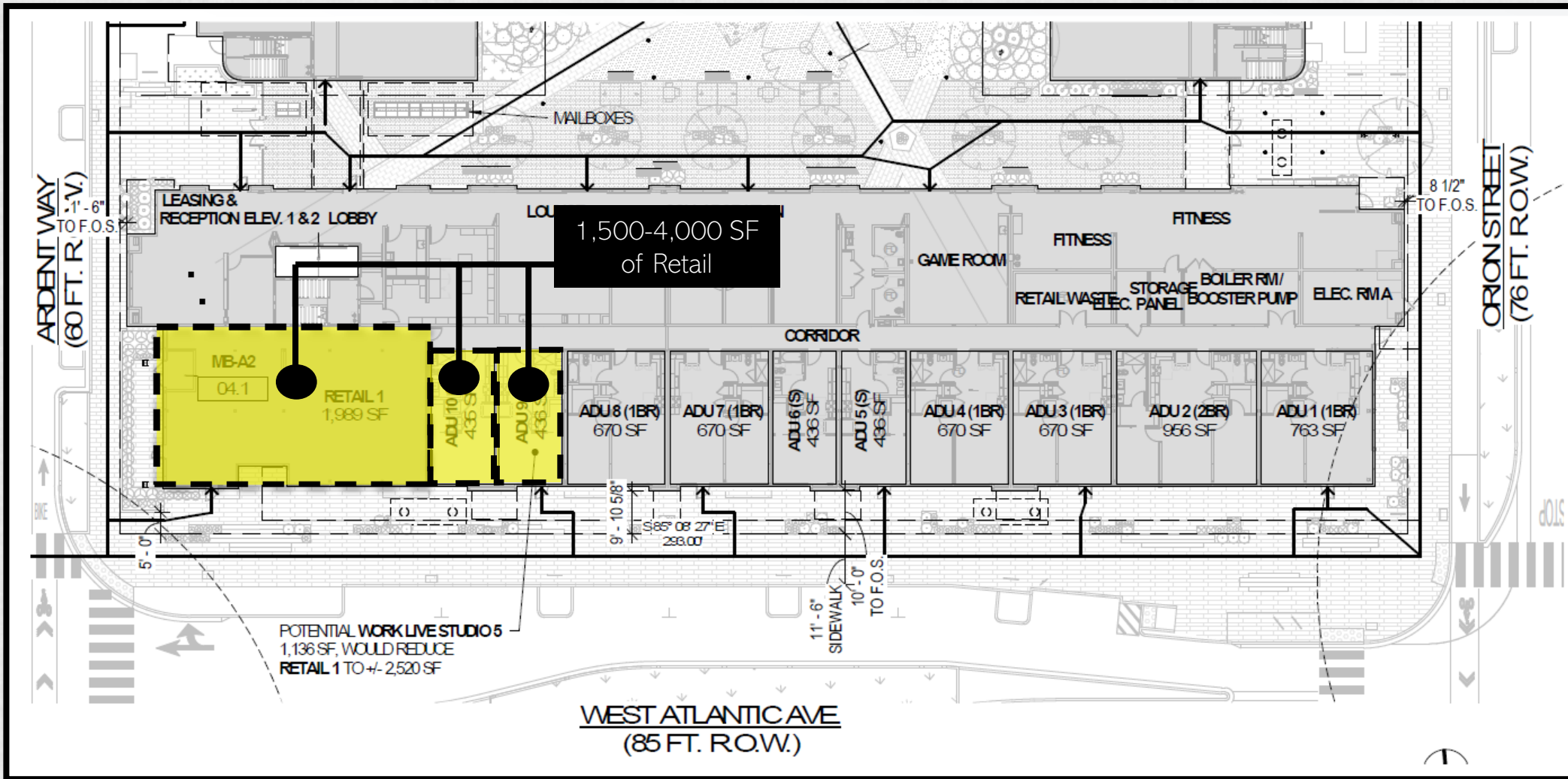
AERO, a 210-unit Class A multi-family development in Alameda, CA. Located within the Alameda Point Master Development and delivering in May 2021, the building will feature 2,000-3,000 SF of retail space at the corner of W. Atlantic Avenue and Ardent Way.



## PROJECT DETAILS

- ❖ 1,500-4,000 SF retail | ± 210 residential units
- ❖ Address: 201 W Atlantic Avenue, Alameda, CA
- ❖ Delivery Date: May 2021
- ❖ Incoming ferry terminal provides residents with a 20-minute one-seat commute to Downtown San Francisco
- ❖ Opportunity to be an early mover in next coveted Bay Area neighborhood
- ❖ CEI's insight and connection to the larger Alameda Point Master Development enhances its ability to create a sense of place with Alameda Point and specifically, AERO

# SPACE PLAN



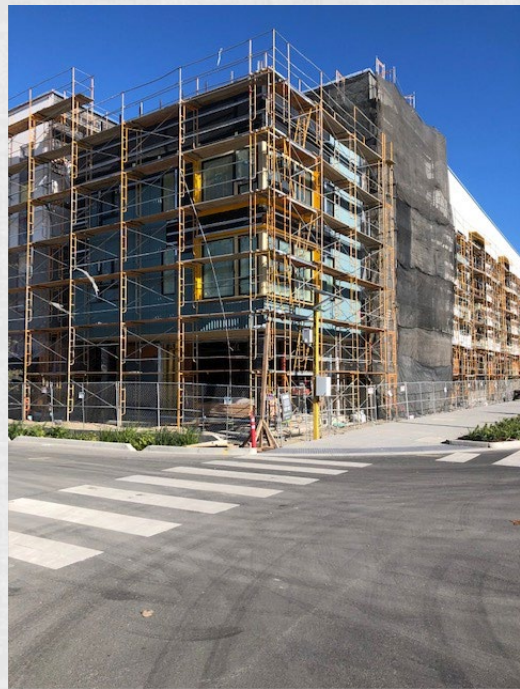
## DELIVERY CONDITIONS

- ❖ The space is being delivered as a “warm shell”
- ❖ Partial HVAC systems installed
- ❖ Immediately ready to receive Tenant Improvements.
- ❖ Conduits for electrical and telephone data
- ❖ Connections for water, sewer, and gas

# PROJECT OVERVIEW VISUAL



Outdoor Open Space Courtyard



Progress Photo Nov. 2020



Protected Seating Area



San Francisco

San Francisco in ±20 mins

Veteran's Admin Development and Nature Reserve

Open Space

SEAPLANE LAGOON  
New Ferry Terminal

Waterfront Town Center

Adaptive Re-Use

Enterprise Zone, Site B



Site

West Midway

SINGLE FAMILY RE-SALES  
\$995,000 - \$1,390,000

Master Development Plan



**DEMOGRAPHICS** | 1-mile radius



Total Population  
12,793



Total Households  
4,828



Average Household Income  
\$83,662




Total Employees  
4,735



Total Businesses  
362

# LOCAL AMENITIES MAP





For More Information Please Contact:

**Jeff Badstubner**

Senior Vice President

415-395-4900

[jeff.badstubner@am.jll.com](mailto:jeff.badstubner@am.jll.com)

BRE License # 01155279

