

CLEMENTS FERRY LOGISTICS CENTER

164,215± SF - BUILD-TO-SUIT

Clements Ferry Road
Charleston, South Carolina 29492



BUILD-TO-SUIT

164,215± SF REAR-LOAD

**CLOSEST AVAILABLE CLASS A
TO WANDO WELCH TERMINAL**



FOR MORE
INFORMATION
CONTACT

RYAN YOUNG
803.530.4153
ryan.young@cushwake.com

ERIC RIDLEHOOVER
704.335.4440
eric.ridlehoover@cushwake.com

DREW SCHARF
919.264.7691
drew.scharf@cushwake.com

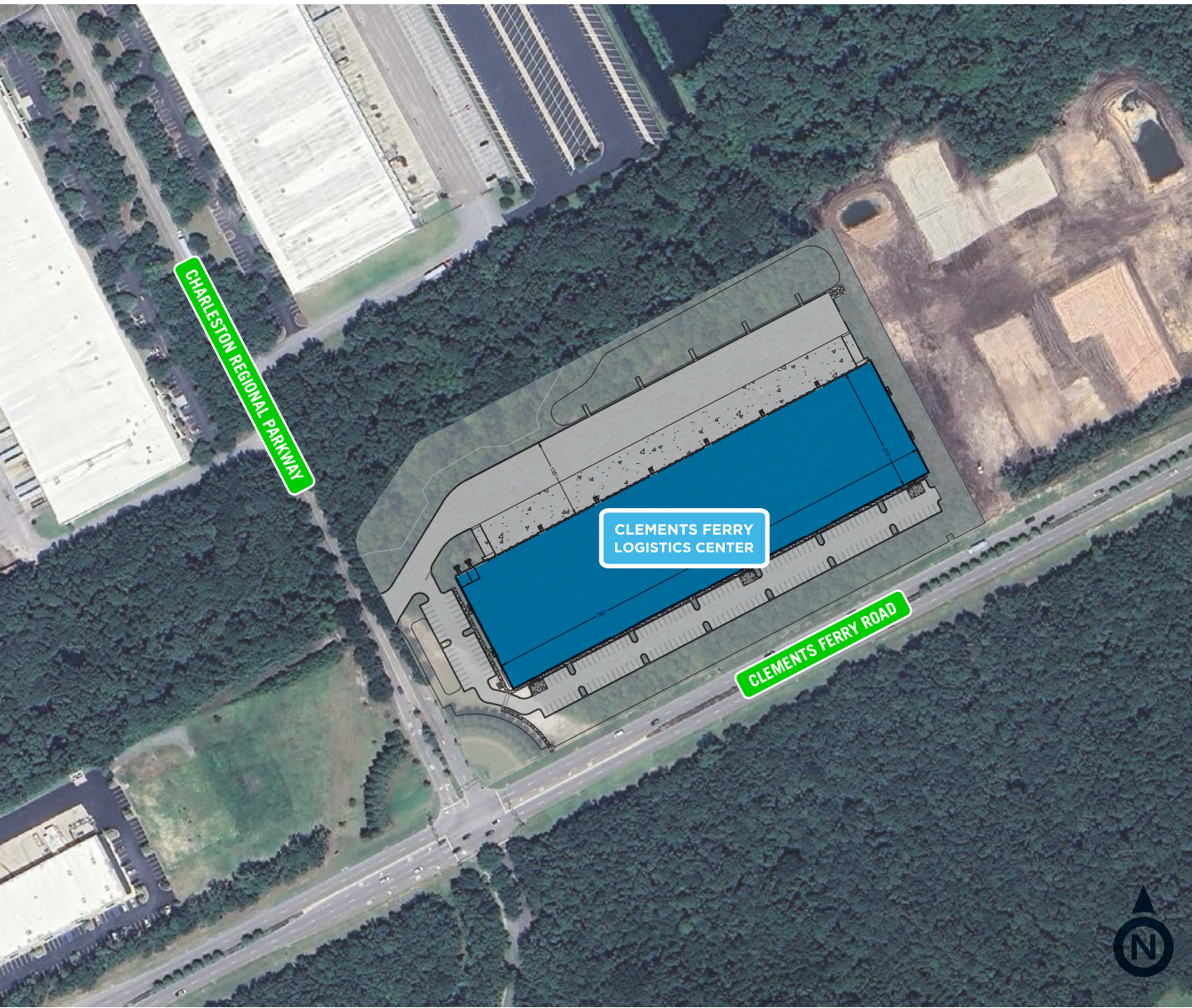


CLEMENTS FERRY LOGISTICS CENTER

164,215± SF - BUILD-TO-SUIT

SITE PLAN

Clements Ferry Road
Charleston, South Carolina 29492



CLEMENTS FERRY LOGISTICS CENTER

OFFERS SUPERIOR ACCESS TO:

- TRANSPORTATION HUBS
- HIGHWAYS
- LARGE LABOR FORCE

Located within the established **Charleston Regional Business Center**, Hunt Midwest's new Class A facility is strategically master-planned for **last-mile distribution** with an efficiency footprint and rear-load configuration.

- ◆ Closest available Class A building to Charleston's Wando Welch Terminal
- ◆ Central location in Charleston's main industrial corridor, I-526 (Mark Clark Expressway)
- ◆ 314,536 population within 10-mile radius and 6.03% predicted growth rate (2022-2027)



FOR MORE
INFORMATION
CONTACT

RYAN YOUNG
803.530.4153
ryan.young@cushwake.com

ERIC RIDLEHOOVER
704.335.4440
eric.ridlehoover@cushwake.com

DREW SCHARF
919.264.7691
drew.scharf@cushwake.com

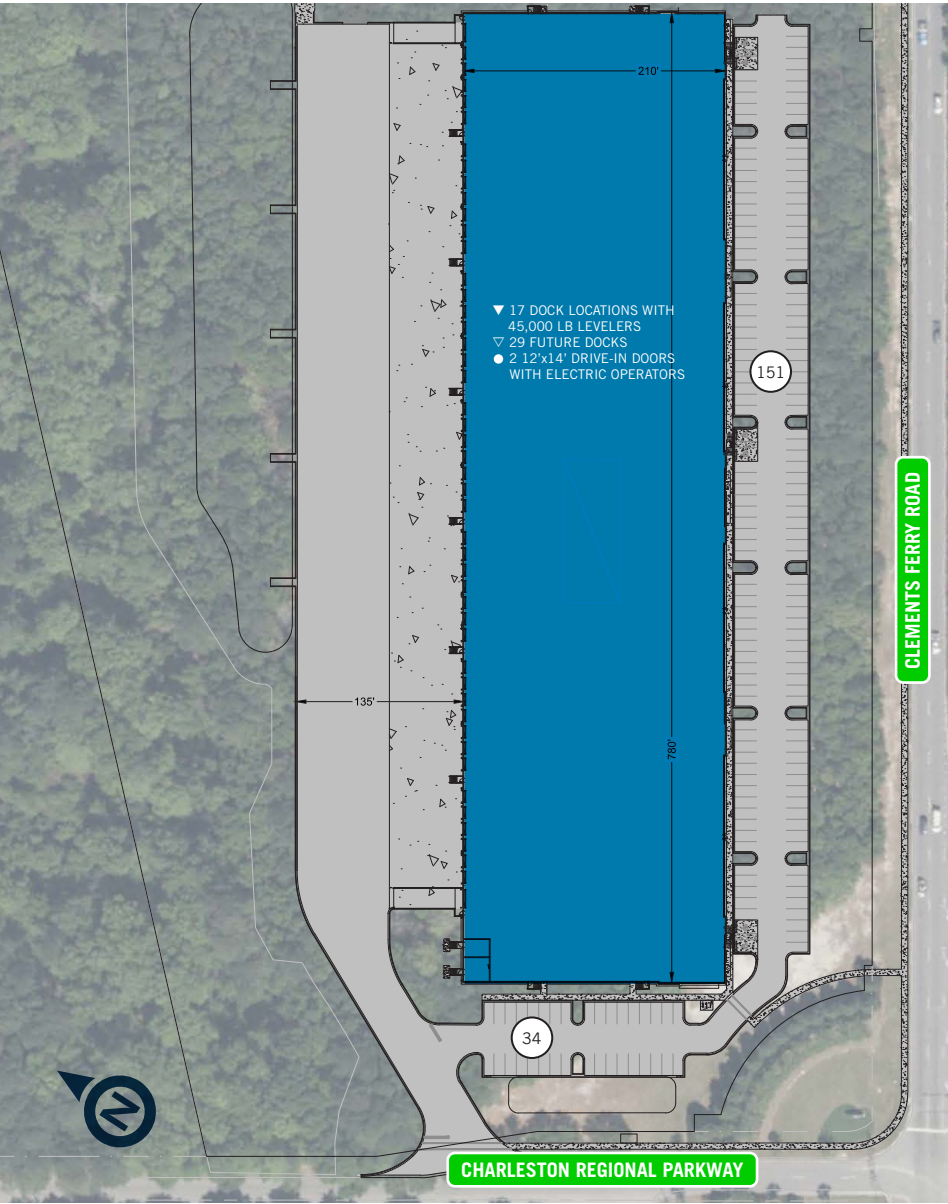


CLEMENTS FERRY LOGISTICS CENTER

164,215± SF - BUILD-TO-SUIT

BUILDING SPECS

Clements Ferry Road
Charleston, South Carolina 29492



BUILDING TYPE	Concrete tilt panels with structural steel frame 1" insulated Low-E glass
BUILDING SIZE	Approximately 164,215± square feet
BUILDING DIMENSIONS	210' deep x 780' wide
ORIENTATION	Rear-load
COLUMN SPACING	50' deep x 52' wide typical, staging bays are 60' deep
CLEAR HEIGHT	32' minimum
ROOF	60 Mil TPO single-ply white membrane, mechanically fastened
BUILDING FLOOR SLAB	7" thick, 4,000 psi concrete typical floor flatness of FF 50 minimum Floor levelness of FL 35 minimum
FLOOR SEALER	Ashford
DRIVE-IN DOORS	Two (2) 12' x 14' drive-in doors
DOCK DOORS & EQUIPMENT	Seventeen (17) 9' x 10' dock-high doors expandable to 46 Z guards, set of dock bumpers, 45,000 lb. mechanical dock levelers, 10" dock seals
ELECTRICAL SERVICE	2,000 amp, 480V
OFFICE	Build-to-suit
INTERIOR	Painted
WAREHOUSE LIGHTING	LED fixtures with 30 Footcandles
FIRE PROTECTION SYSTEM	Viking ESFR quick response pendent heads
TRUCK COURTS	135' deep
TRAILER PARKING	46 total spaces
CAR PARKING	185 total spaces



FOR MORE
INFORMATION
CONTACT

RYAN YOUNG
803.530.4153
ryan.young@cushwake.com

ERIC RIDLEHOOVER
704.335.4440
eric.ridlehoover@cushwake.com

DREW SCHARF
919.264.7691
drew.scharf@cushwake.com

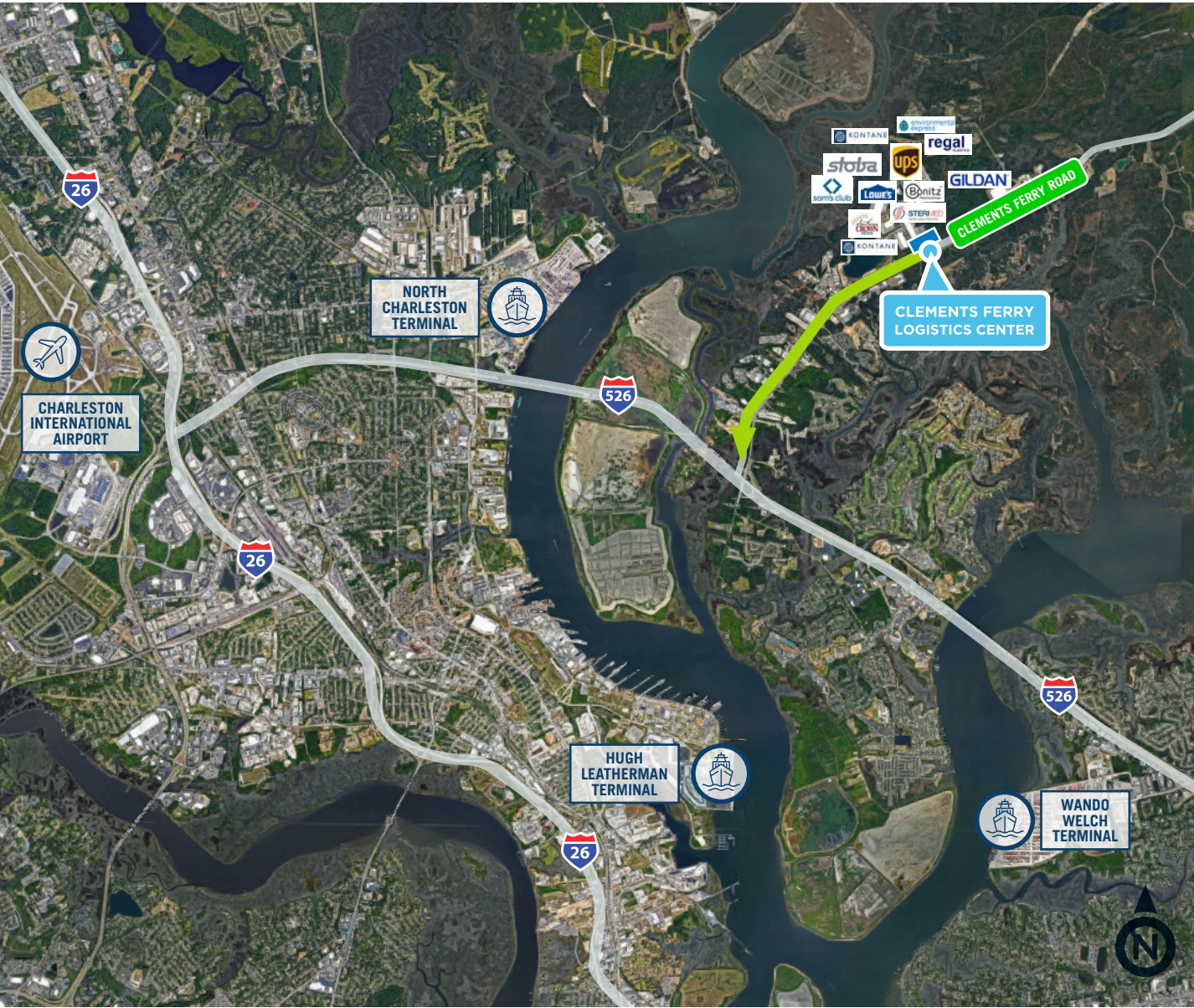


CLEMENTS FERRY LOGISTICS CENTER

164,215± SF - BUILD-TO-SUIT

AREA MAP

Clements Ferry Road
Charleston, South Carolina 29492



CHARLESTON, SOUTH CAROLINA INDUSTRIAL CORRIDOR

Charleston is the fastest growing container port on the East Coast, creating excellent opportunities for industrial users with import/export needs in a business-friendly state.

In addition to delivery of the new Hugh Leatherman Terminal, the Charleston Harbor deepening project has made the Port of Charleston the deepest on the Eastern seaboard at 52 feet, accommodating vessels up to 19,000 TEUs and greatly enhancing efficiency and capacity.

**2.7
MILES**

I-526 - EXIT 23B
INTERCHANGE

**11.2
MILES**

CHARLESTON
INTERNATIONAL AIRPORT

**8.5
MILES**

WANDO WELCH TERMINAL

**9.2
MILES**

PORT OF CHARLESTON
NORTH TERMINAL

**207
MILES**

CHARLOTTE, NC

**297
MILES**

ATLANTA, GA



FOR MORE
INFORMATION
CONTACT

RYAN YOUNG
803.530.4153
ryan.young@cushwake.com

ERIC RIDLEHOOVER
704.335.4440
eric.ridlehoover@cushwake.com

DREW SCHARF
919.264.7691
drew.scharf@cushwake.com

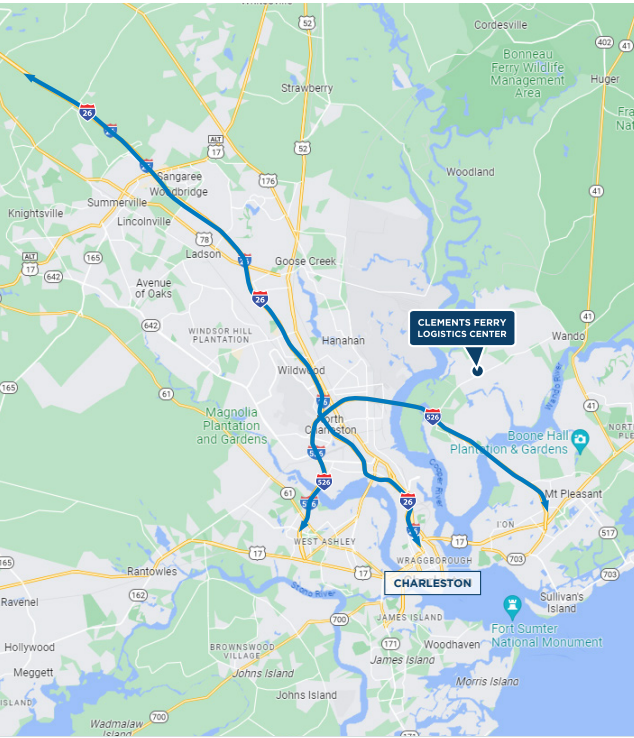


CLEMENTS FERRY LOGISTICS CENTER

164,215± SF - BUILD-TO-SUIT

LOCATION MAP

Clements Ferry Road
Charleston, South Carolina 29492



FOR MORE
INFORMATION
CONTACT

RYAN YOUNG
803.530.4153
ryan.young@cushwake.com

ERIC RIDLEHOOVER
704.335.4440
eric.ridlehoover@cushwake.com

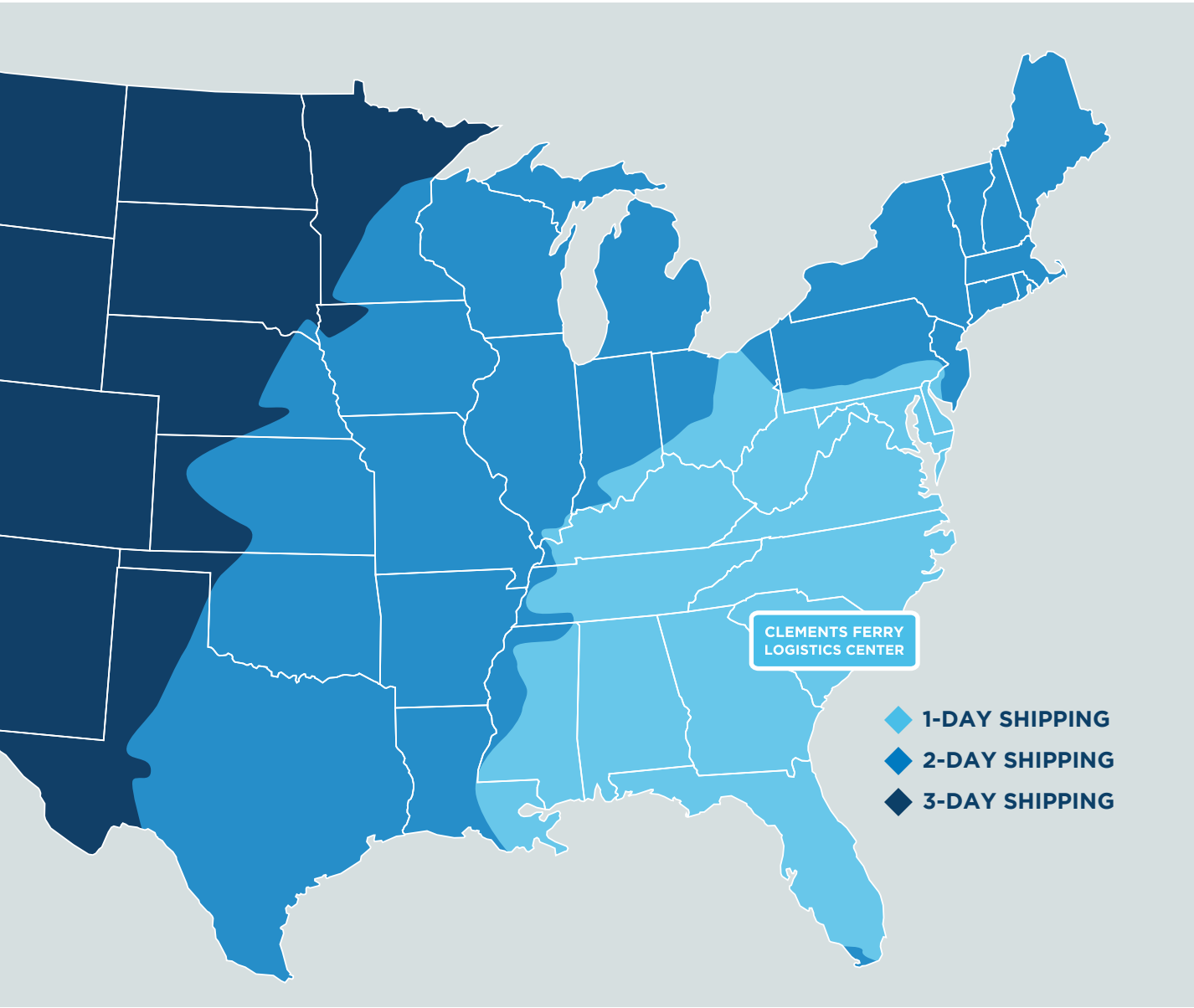
DREW SCHARF
919.264.7691
drew.scharf@cushwake.com



CLEMENTS FERRY LOGISTICS CENTER

164,215± SF - BUILD-TO-SUIT

Clements Ferry Road
Charleston, South Carolina 29492



1-DAY
SHIPPING TO
110M
CONSUMERS

2-DAY
SHIPPING TO
230M
CONSUMERS



FOR MORE
INFORMATION
CONTACT

RYAN YOUNG
803.530.4153
ryan.young@cushwake.com

ERIC RIDLEHOOPER
704.335.4440
eric.ridlehooper@cushwake.com

DREW SCHARF
919.264.7691
drew.scharf@cushwake.com

