

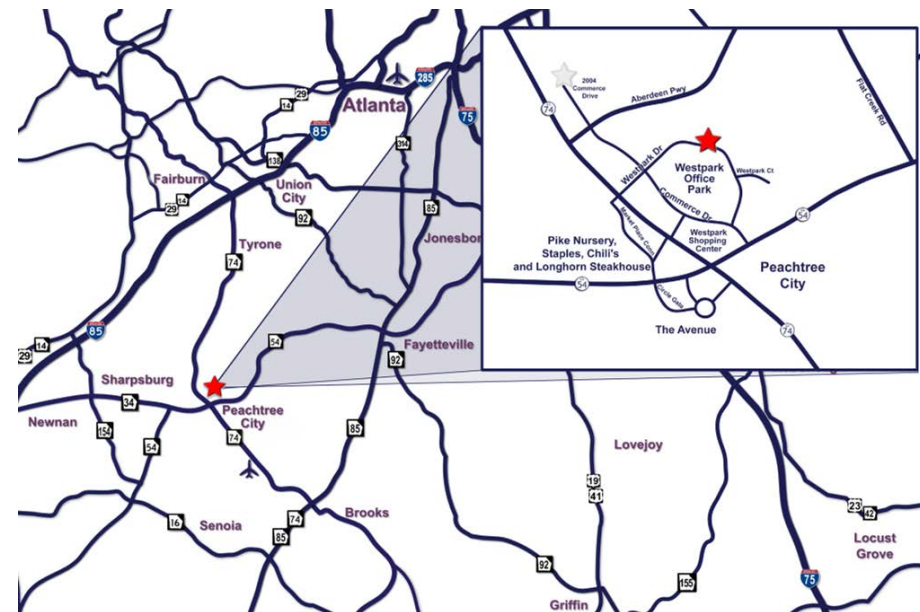
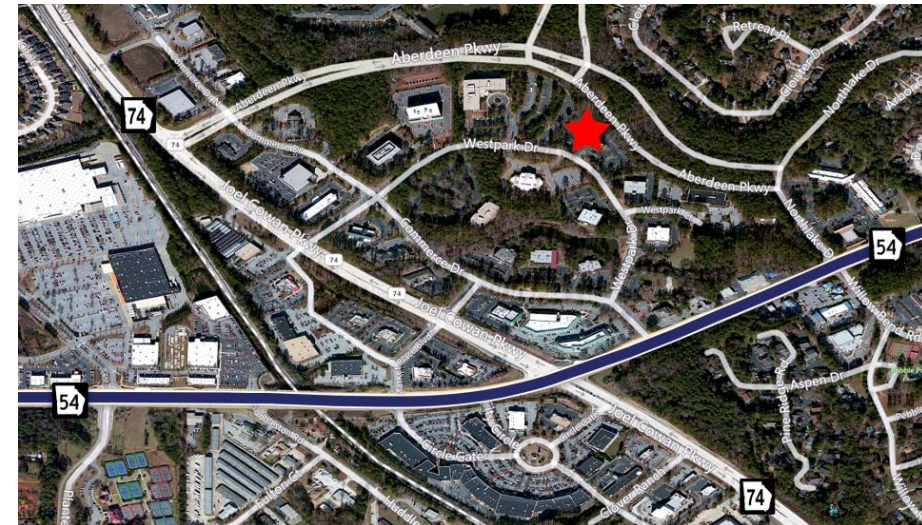
# OFFICE SPACE FOR LEASE

900 Westpark Drive, Suite 310, Peachtree City, GA



## Property Profile

- +/- 1,678 RSF Available
- 36,000 SF, 3-Story Class "A" Office Building
- Easy access to GA Hwy 54 and 74 and I-85
- Adjacent to retail, restaurants and high-end residential
- Parking Ratio: 4/1,000
- Lease Rate: Inquire
- High-speed Internet access and digital communications
- Beautifully landscaped and maintained grounds
- Year Built: 2000
- County: Fayette
- City: Peachtree City



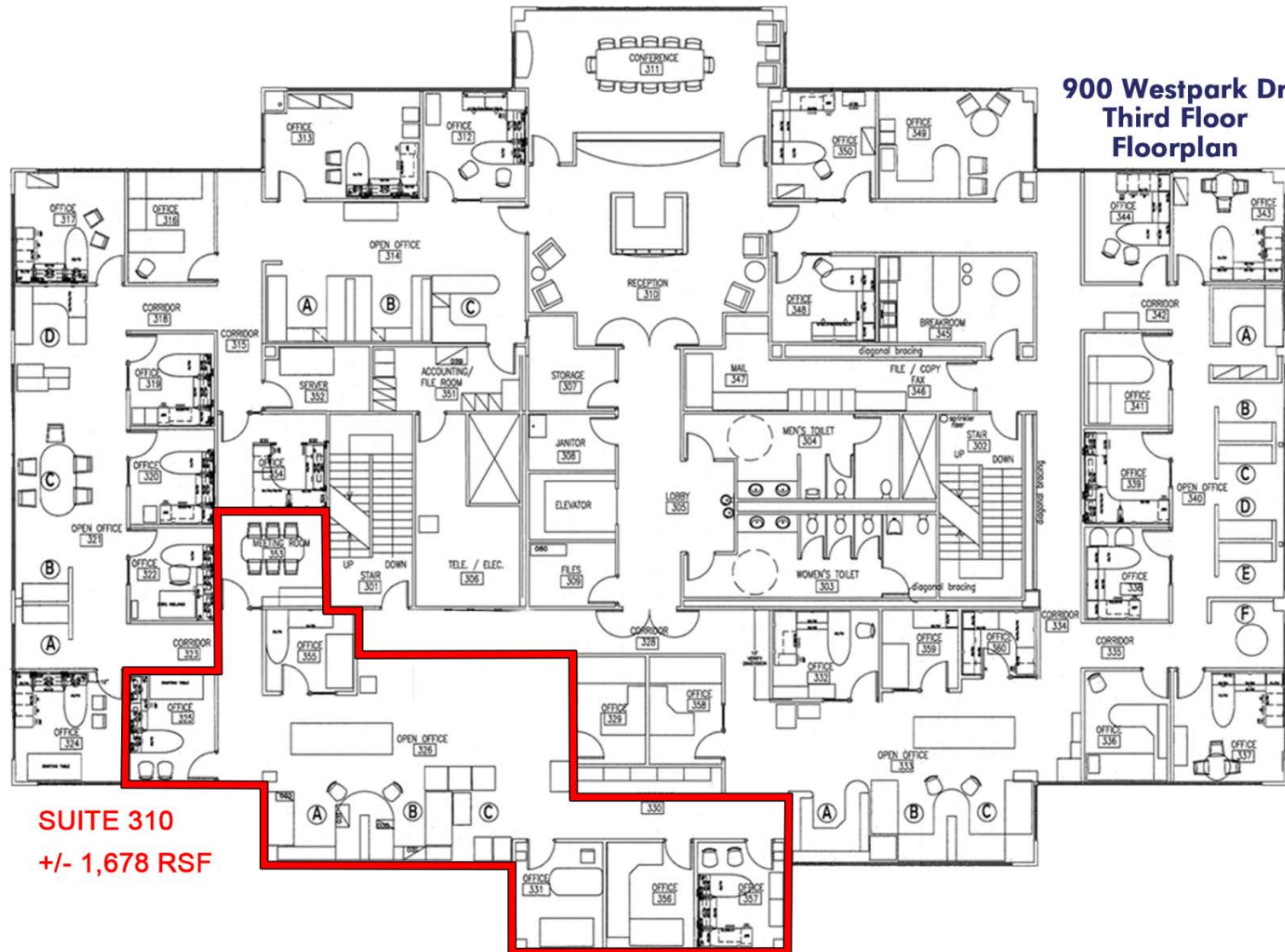
For more information please contact:  
**Brent Randolph** Cell: 770.318.6815

770.632.4000 | [rwcre.net](http://rwcre.net)  
900 Westpark Drive, Suite 300 | Peachtree City, GA 30269

This information has been obtained from sources believed reliable. While we do not doubt its accuracy we have not verified it and make no guarantee, warranty or representation about it.

**RW** | Randolph  
Williamson

## Floor Plan



**SUITE 310**  
**+/- 1,678 RSF**

770.632.4000 | [rwcre.net](http://rwcre.net)  
900 Westpark Drive, Suite 300 | Peachtree City, GA 30269

This information has been obtained from sources believed reliable. While we do not doubt its accuracy we have not verified it and make no guarantee, warranty or representation about it.