



# OAKBROOK TECH CENTER

1346 OAKBROOK DRIVE | NORCROSS, GA 30093

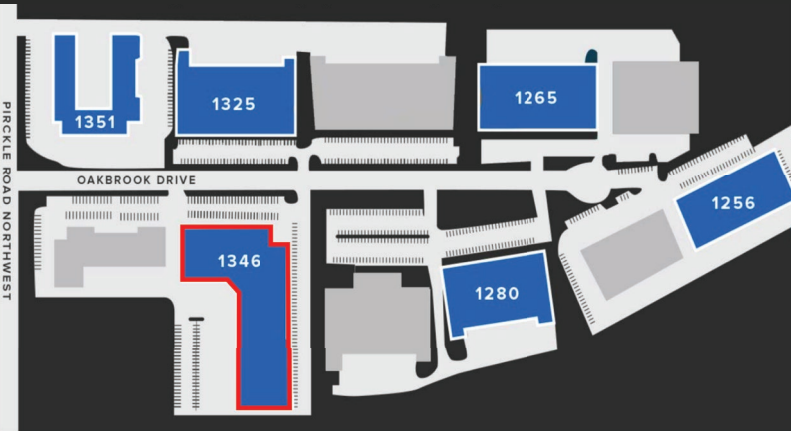
## PROPERTY INFORMATION

- 69,020 SF Rear Load Industrial / Flex Building
- 7,750 SF Available End Cap Suite Available
  - ±6,600 SF Existing Office
  - ±1,150 SF Warehouse
  - One (9'x10') Dock-High Door
  - One (9'x10') Drive-In Ramped Door
- ±18' Clear Height
- Abundant Parking
- Proactive Institutional Ownership
- Excellent access to Jimmy Carter Blvd, Peachtree Industrial Blvd, I-85 and I-285
- Ideal Norcross location in close proximity to numerous restaurants, shops, and local amenities
- Available October 1, 2026

±7,750 SF AVAILABLE



## OAKBROOK TECH CENTER



All information contained herein is believed to be accurate but is not warranted. This offer is subject to errors, omissions, prior sale or withdrawal.



**Hughes Commercial Real Estate, Inc.**  
8215 Roswell Road, Building 700  
Atlanta, GA 30350  
770-559-1099 | hughes-cre.com

**Matt Nelsen**  
404-431-0971  
matt@hughes-cre.com

Owned By:



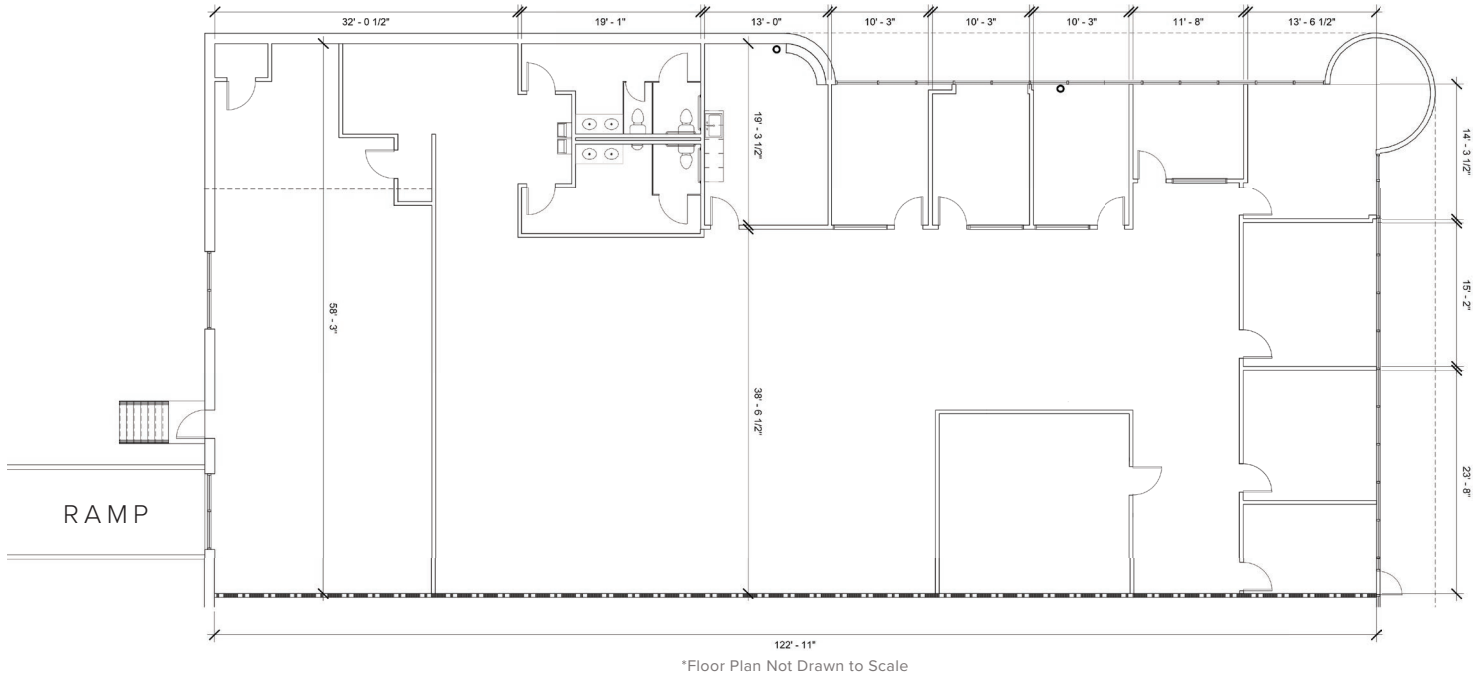


# OAKBROOK

## TECH CENTER

**BUILDING 1346 | SUITE 170A | 7,750 SF**

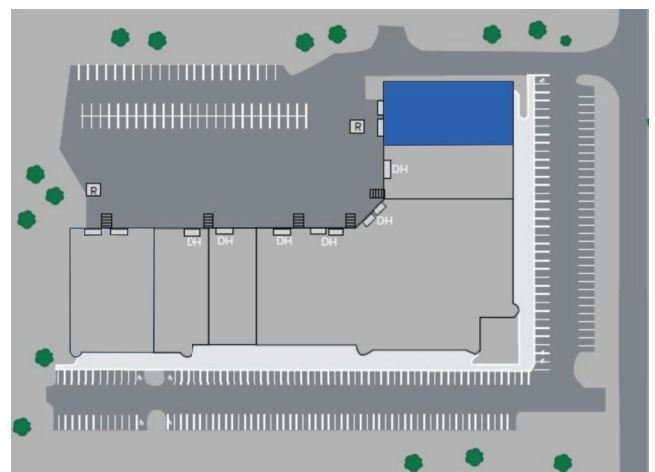
### FLOOR PLAN



### SUITE INFORMATION

- 7,750 SF Suite
- ±6,600 SF Office
- ±1,150 SF Warehouse
- One (1) Dock-High Door
- One (1) Drive-In Door
- 100% HVAC
- Available 10/1/2026

### KEY PLAN



All information contained herein is believed to be accurate but is not warranted. This offer is subject to errors, omissions, prior sale or withdrawal.



**Hughes Commercial Real Estate, Inc.**  
8215 Roswell Road, Building 700  
Atlanta, GA 30350  
770-559-1099 | hughes-cre.com

**Matt Nelsen**  
404-431-0971  
matt@hughes-cre.com

Owned By:





# OAKBROOK

## TECH CENTER

BUILDING 1346 | SUITE 170A | 7,750 SF

### PHOTOS



All information contained herein is believed to be accurate but is not warranted. This offer is subject to errors, omissions, prior sale or withdrawal.



**Hughes Commercial Real Estate, Inc.**  
8215 Roswell Road, Building 700  
Atlanta, GA 30350  
770-559-1099 | [hughes-cre.com](http://hughes-cre.com)

**Matt Nelsen**  
404-431-0971  
[matt@hughes-cre.com](mailto:matt@hughes-cre.com)

Owned By:

