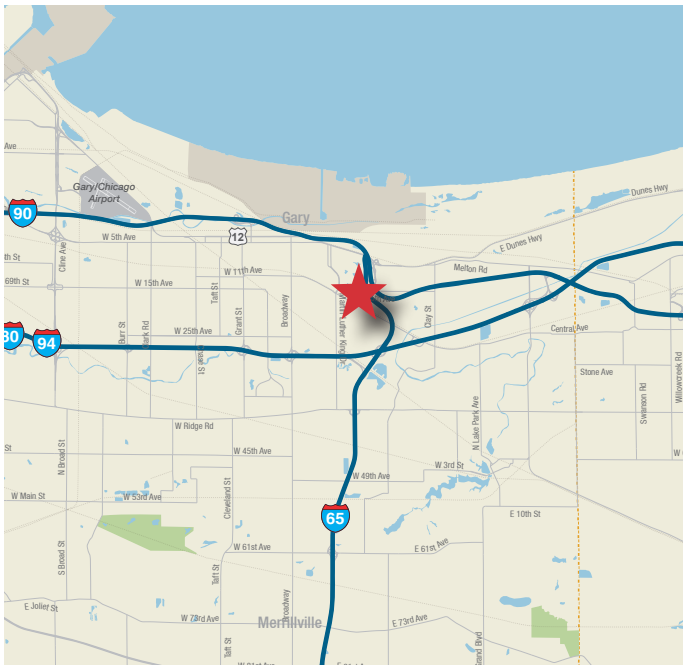


FOR SALE OR LEASE

77,481 SF Industrial
(divisible to 30,312 SF)



2100 E. 15th Avenue

Gary, IN

- 77,481 SF available - divisible to 30,312 SF
- 2,500 SF office
- ±5.3 acres
- 18' clear height
- 2 exterior docks - expandable
- Heavy power - 3,000 amps/480 volts
- 140+ parking
- Immediate access to I-65 and I-80/94
- Excellent manufacturing or distribution facility
- Taxes: \$0.23 psf (2016)

For more information contact:

Chris Gary

Executive Vice President

630 693 0694

cgary@hiffman.com

Alex Sutterer

Associate Broker

630 693 0644

asutterer@hiffman.com

Lease price: \$5.25/sf gross

Sale price: \$2,500,000

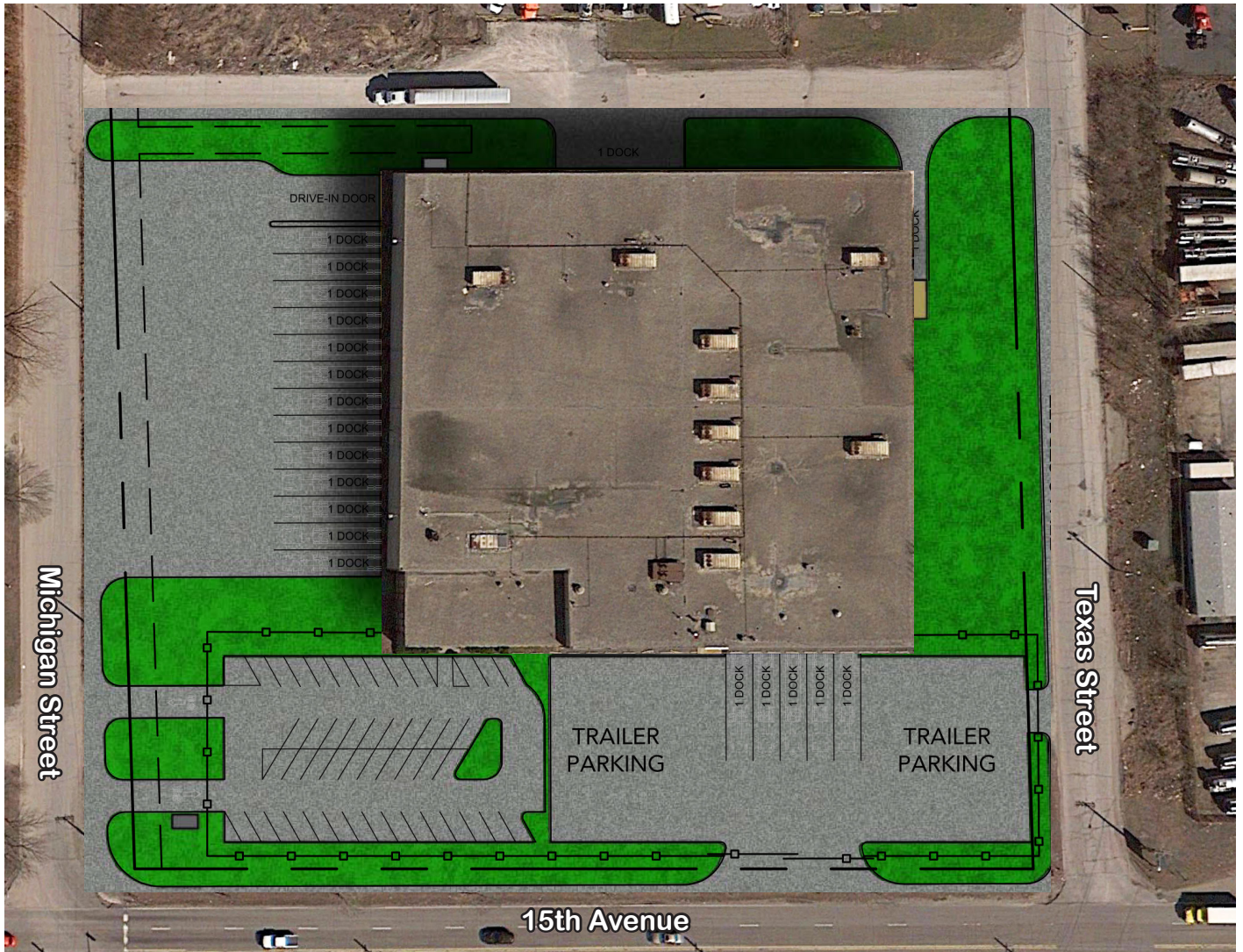


One Oakbrook Terrace, Suite 400
Oakbrook Terrace, IL 60181
630 932 1234
www.naihiffman.com

FOR SALE OR LEASE

2100 E. 15th Avenue
Gary, IN

Conceptual Dock Expansion



Current Site

