



# 124 Lasky Drive, Beverly Hills



Commercial Leasing & Investment Sales  
1450 2nd #150 Santa Monica, CA 90401  
www.rsfla.com BRE # 01095117

Michael Preiss  
310-526-0910  
Michael@rsfla.com

# 124 LASKY

## BUILDING FEATURES

This timeless 8,360 SF two story, freestanding building is one of a three building campus, with onsite parking spaces available. Built in 1947, this family owned and operated building was recently renovated and is meticulously maintained to preserve a classic character. Numerous small suites include exposed brick walls, ample natural light, wood composite floors and recessed lighting.

The property is steps from the Peninsula Hotel, and walking distance from the countless amenities found in the world renowned Beverly Hills Triangle. It is truly an oasis, perfect for any small business seeking a well-appointed location with a Beverly Hills address with plenty of street parking for visitors.

**Office Building SF** 8,360 SF

**Parking:** 2/1000 at \$150 to \$200/space per month  
More available on a month to month basis

**Year Built** 1947, renovated 2014

### Features

- ✓ Exceptional curb appeal with easy walk up access
- ✓ Ample natural light
- ✓ Recently restored restrooms and common areas
- ✓ Accessible, yet quiet
- ✓ Located just off the major Beverly Hills' thoroughfares
- ✓ Small office suites with flexible terms and room to grow
- ✓ Full time property manager and building engineer



T 310-526-0909  
www.rsfla.com  
BRE # 01095117

# AVAILABLE SPACE

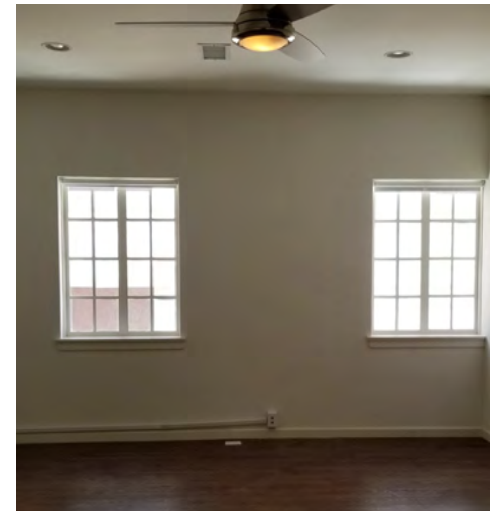
## SUITES

**Suite 102 -** 682 SF  
**Rate** \$5.00/rsf FSG  
**Occupancy** Immediate  
**Term** 3-5 years

**Suite 205 -** 311SF  
**Rate** \$5.00/rsf FSG  
**Occupancy** Immediate  
**Term** 3-5 years

**Suite 210 -** 343 rsf  
(Can be combined w Suite 215 for 620 rsf)  
**Rate** \$5.00/rsf FSG  
**Occupancy** Immediate  
**Term** 3-5 years

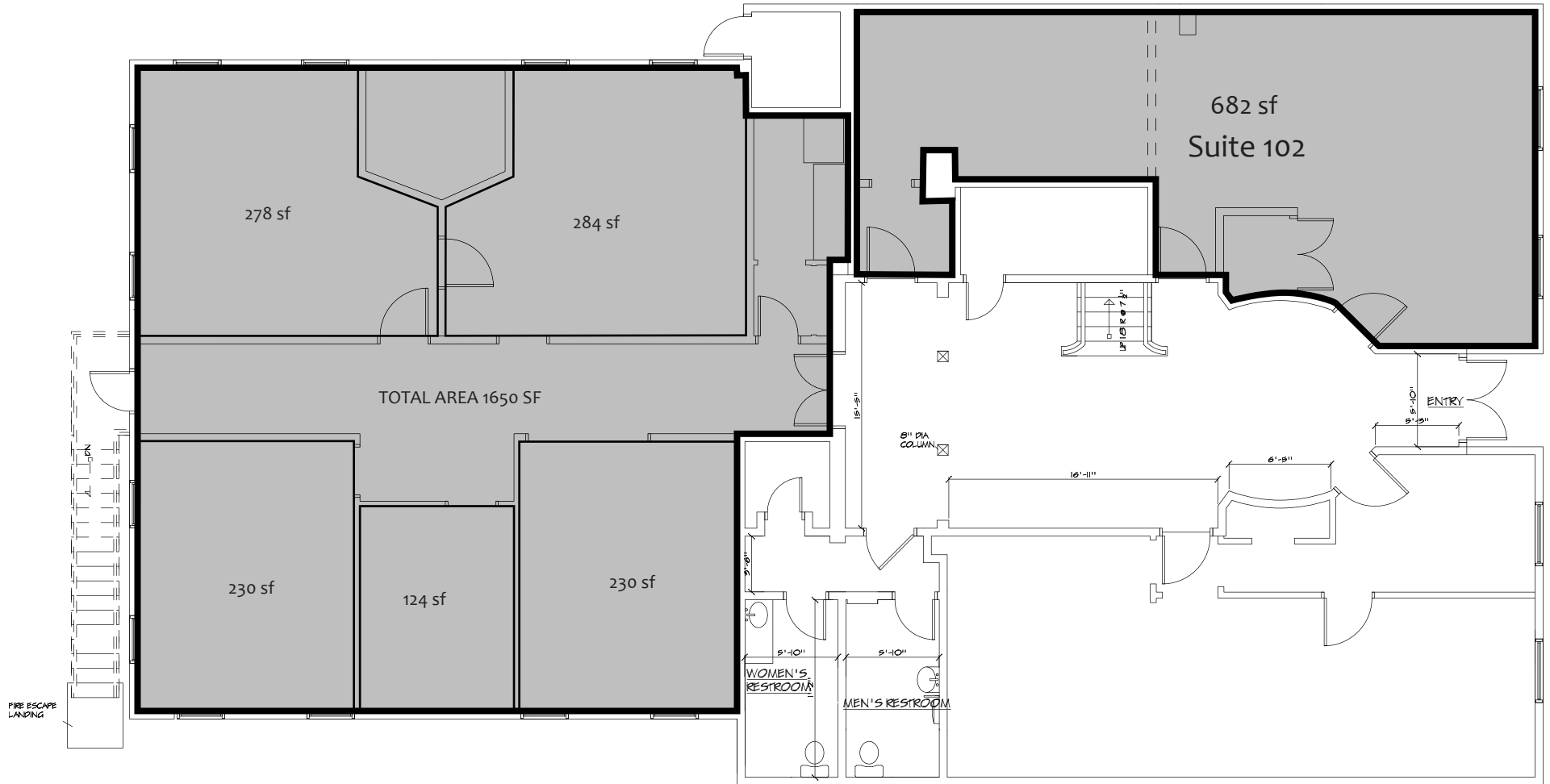
**Suite 215 -** 277 rsf  
(Can be combined w Suite 210 for 620 rsf)  
**Rate** \$5.00/rsf FSG  
**Occupancy** Immediate  
**Term** 3-5 years



T 310-526-0909  
[www.rsfla.com](http://www.rsfla.com)  
DRE # 01095117

# AVAILABLE SPACE

## FIRST FLOOR LAYOUT





# BEVERLY HILLS

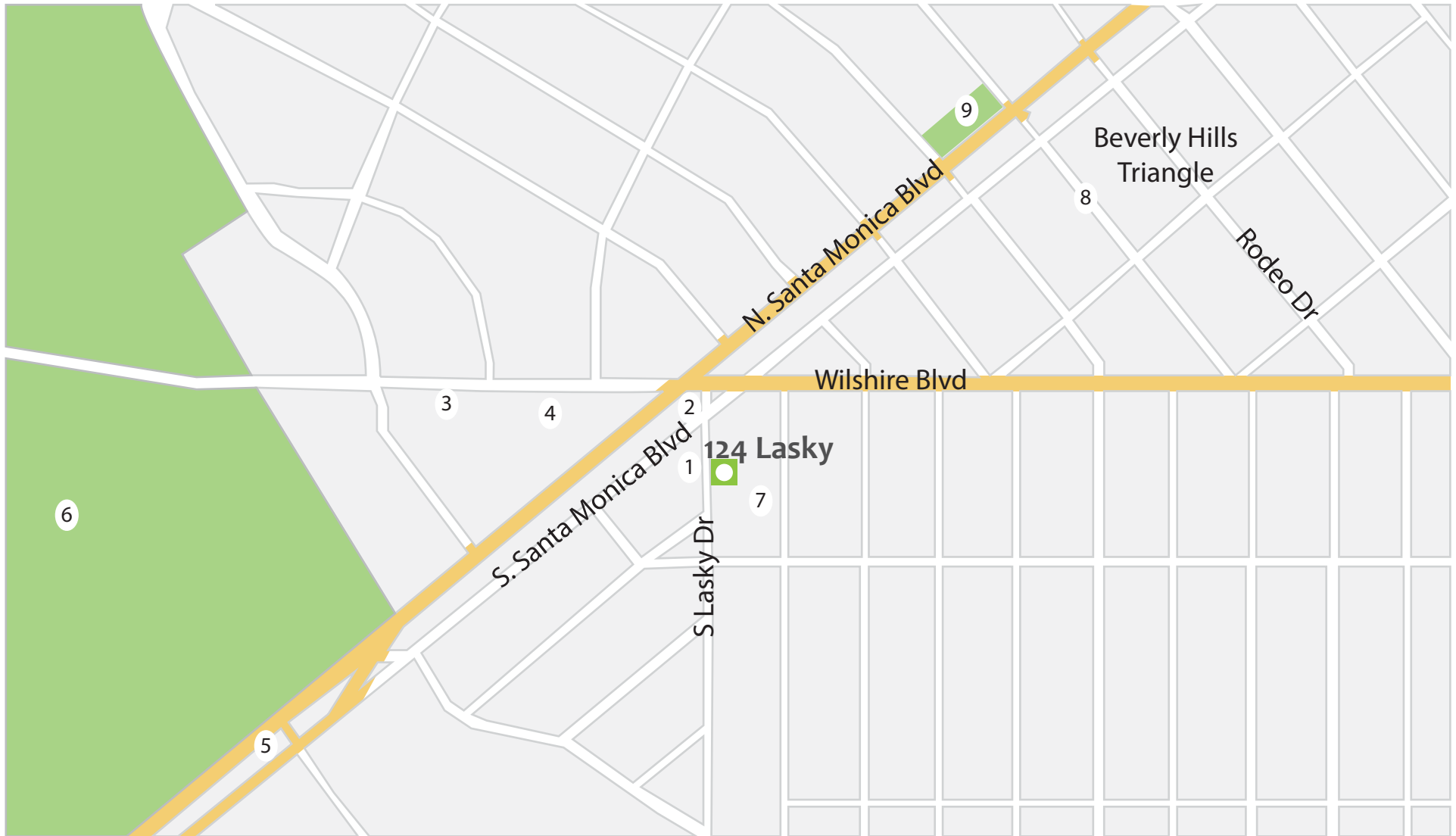
## LIFESTYLE



# BEVERLY HILLS

## NEARBY AMENITIES

- |                    |                           |                              |
|--------------------|---------------------------|------------------------------|
| 1. Peninsula Hotel | 4. Waldorf Astoria        | 7. Maison - Hotel/Restaurant |
| 2. Starbucks       | 5. Westfield Century City | 8. Beverly Hills Triangle    |
| 3. Beverly Hilton  | 6. LA Country Club        | 9. Beverly Gardens Park      |



T 310-526-0909  
www.rsfla.com  
BRE # 01095117