



Asking Price:

**\$28.00**  
PSF

For Lease

Contact us:

**Leigh Hughes**

Vice President

+1 434 284 4007

leigh.hughes@colliers.com

## 1490 Pantops Mountain Pl, Suite 105 Charlottesville, VA

- Suite 105 – 2,622 SF
- \$28.00 PSF, tenant pays trash and janitorial
- Ideally located less than a mile from Martha Jefferson Hospital, directly in front of the Westminster-Canterbury retirement community and surrounded by dialysis, spine and pain, and physical therapy treatment centers

2nd

**Healthiest place  
to live in America**

Kiplinger's Personal Finance

3rd

**Happiest place  
in America**

National Geographic, 2017

4th

**Best city for  
entrepreneurs**

Entrepreneur Magazine

2nd

**Best college town**

Southern Living, 2020

**Colliers**

701 E. Water Street, Suite 301

Charlottesville, VA 22902

P: +1 434 974 7377



## Demographics



2022 population  
**31,301**  
 (3 miles)  
**97,835**  
 (5 miles)  
**140,233**  
 (10 miles)

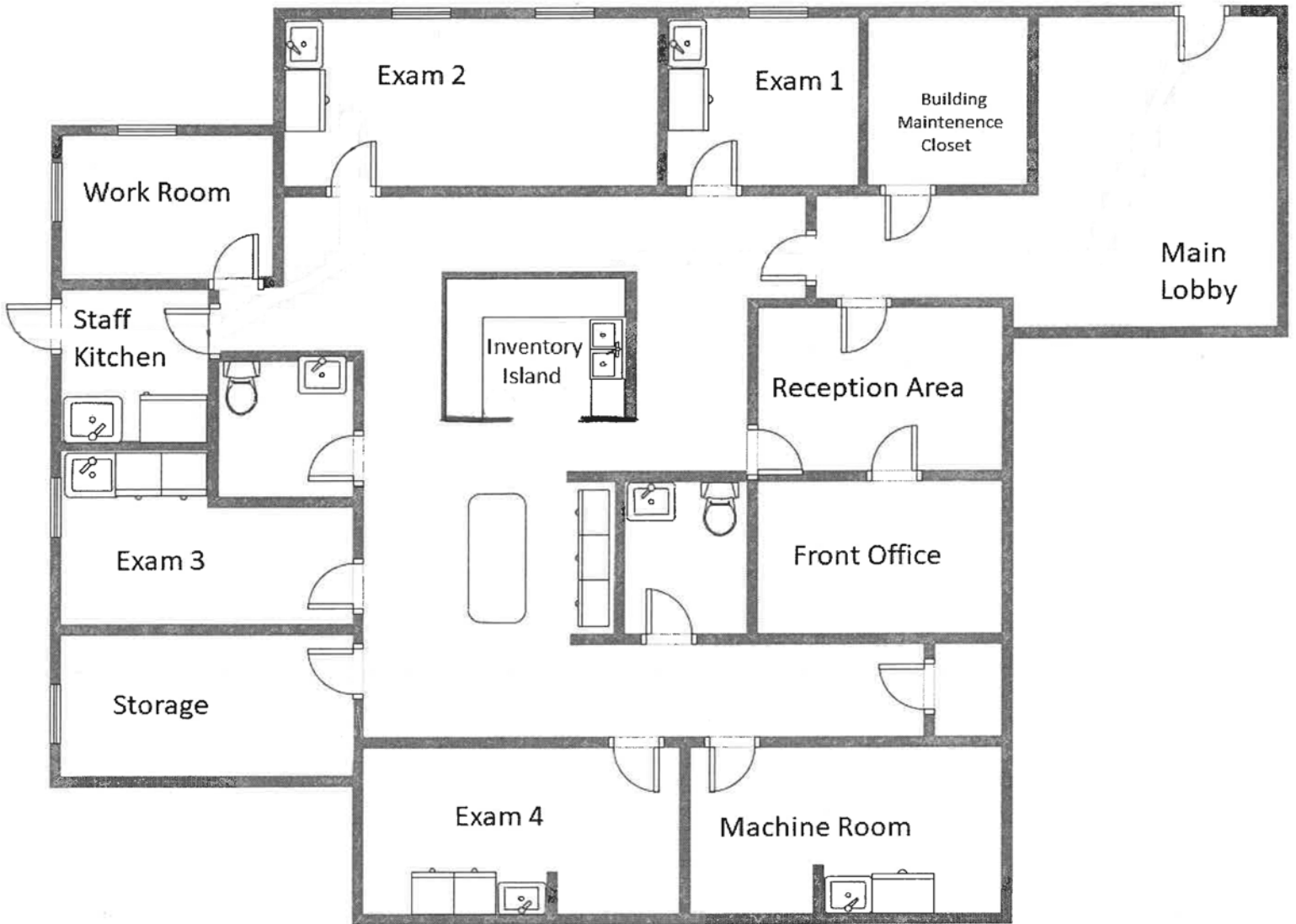
2022 daytime population  
**40,767**  
 (3 miles)  
**124,582**  
 (5 miles)  
**164,683**  
 (10 miles)



2022 Average Household Income  
**\$124,463**  
 (3 miles)  
**\$116,013**  
 (5 miles)  
**\$126,767**  
 (10 miles)

1490 Pantops Mountain Pl | Suite 105





**Contact us:**

**Leigh Hughes**

Vice President  
+1 434 284 4007  
leigh.hughes@colliers.com

**Colliers**  
701 E. Water Street, Suite 301  
Charlottesville, VA 22902  
P: +1 434 974 7377  
colliers.com/charlottesville