



CALIBER

REALTY

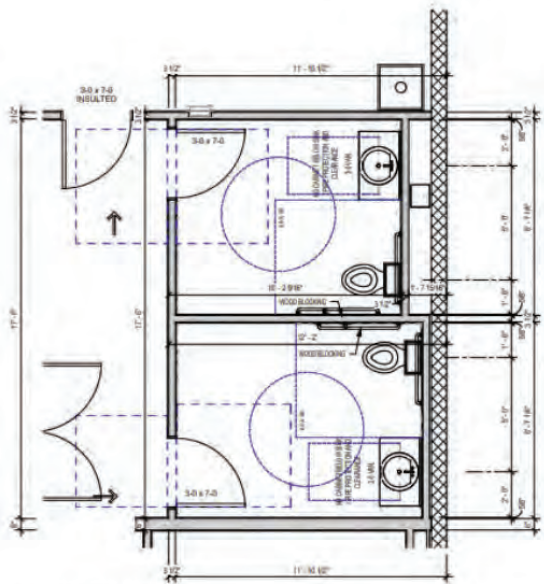
6208 Douglas Ave, Des Moines, IA



OVERVIEW

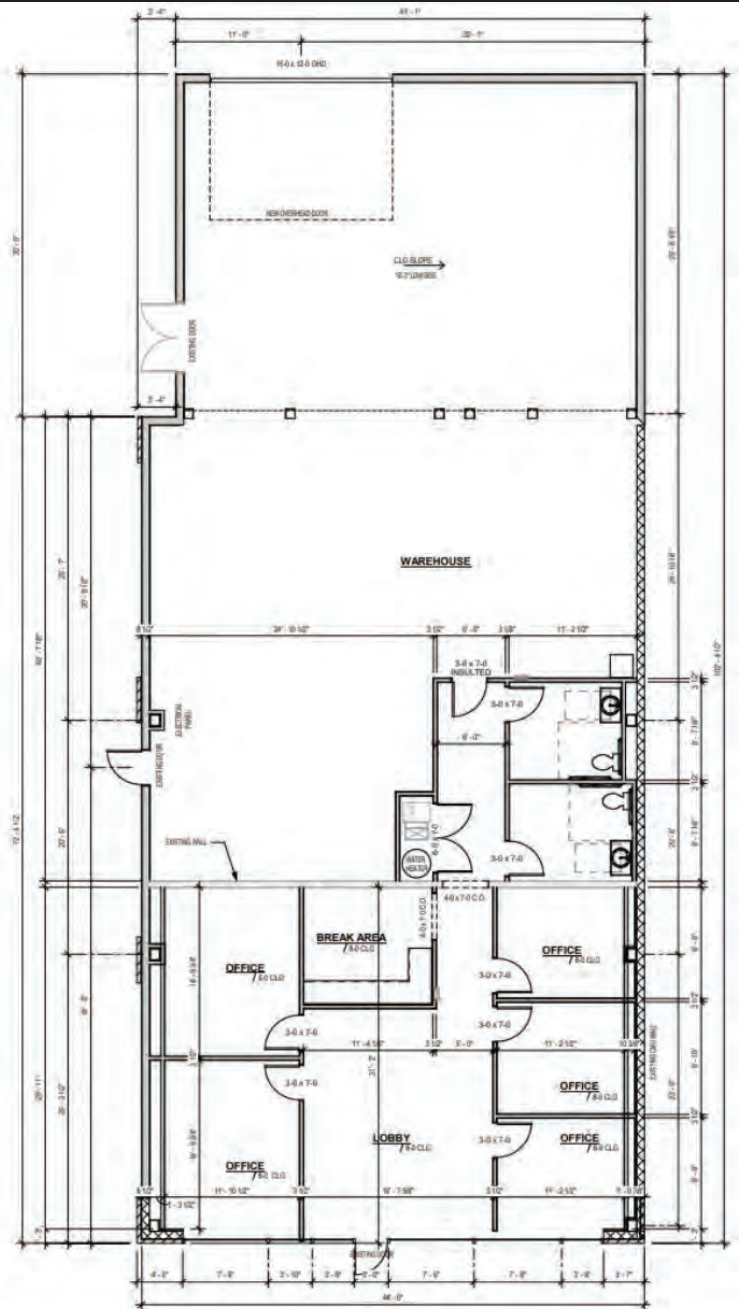
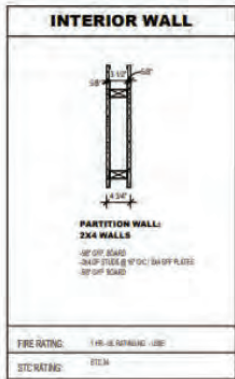
Price: \$525,000 Rate: \$12.00 NNN

- Building Size: 4,357 SF
- Approx 1,800 SF Office Space
- Approx 2,575 SF Warehouse
- Reception Area
- 5 offices
- 2 Restrooms
- 16' x 12' Overhead Door
- Neighboring Businesses: U-Haul, Plaza Pub El Patron Mexican Restaurant, IHop, Merle Hay Mall
- Douglas Ave. Frontage
- Store Front Parking
- Building renovated in 2020



NOTE: SEE TYPICAL ADA TOILET ROOM INFORMATION IN LITERATURE FOR ADDITIONAL INFORMATION.

1 BATHROOMS ENLARGED
Scale: 1/8" = 1'-0"



2 First Floor
Scale: 1/8" = 1'-0"

