

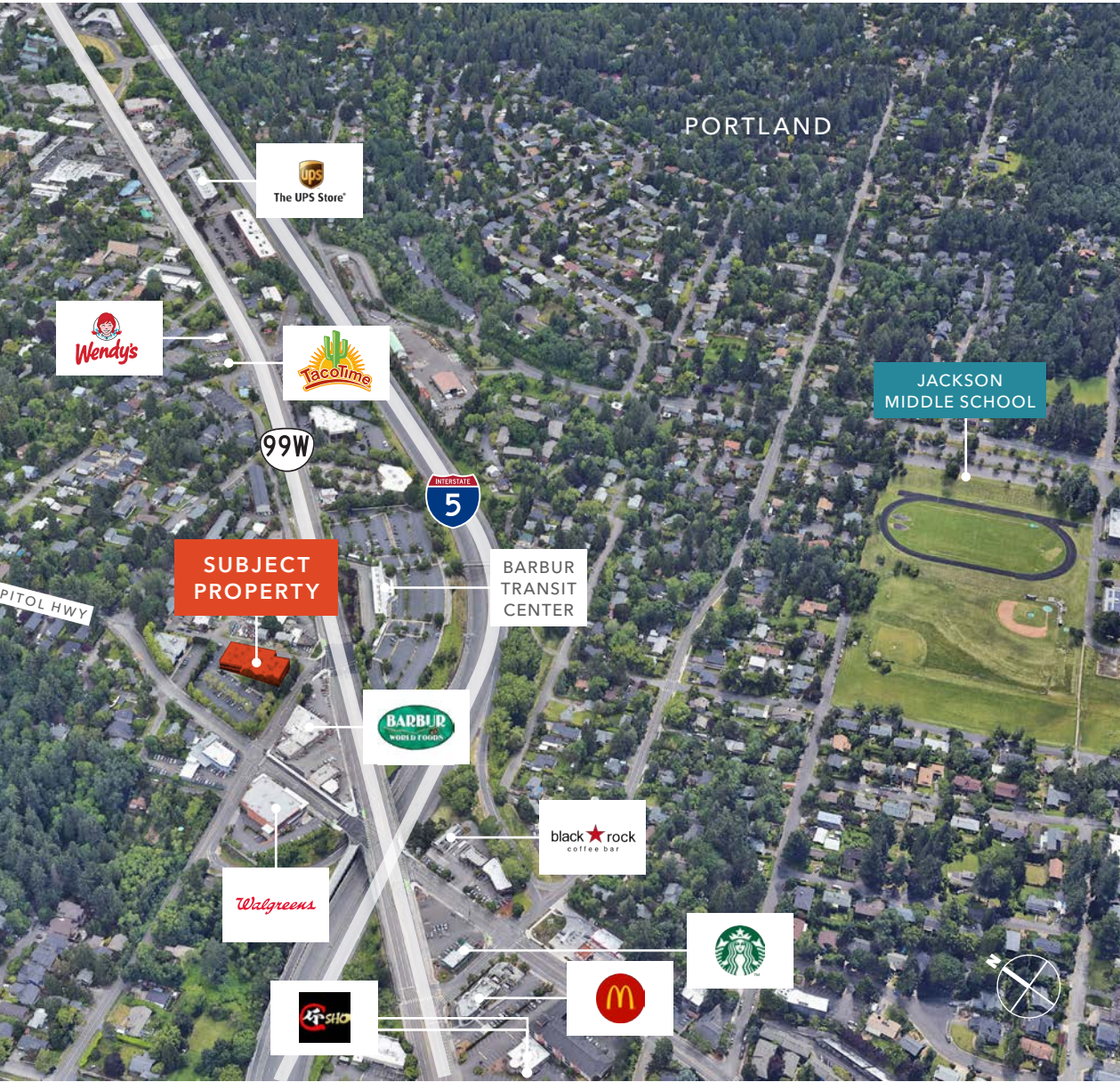
FOR LEASE

CAPITOL PARK



9700 SW CAPITOL HWY, PORTLAND, OR 97219

km Kidder
Mathews



2,783 SF

AVAILABLE

\$21.50/SF

FULL SERVICE



RECENTLY REMODELED



NUMEROUS NEARBY AMENITIES



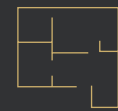
10 MINUTES FROM CBD



AMPLE FREE PARKING



LOCATED IMMEDIATELY OFF I-5



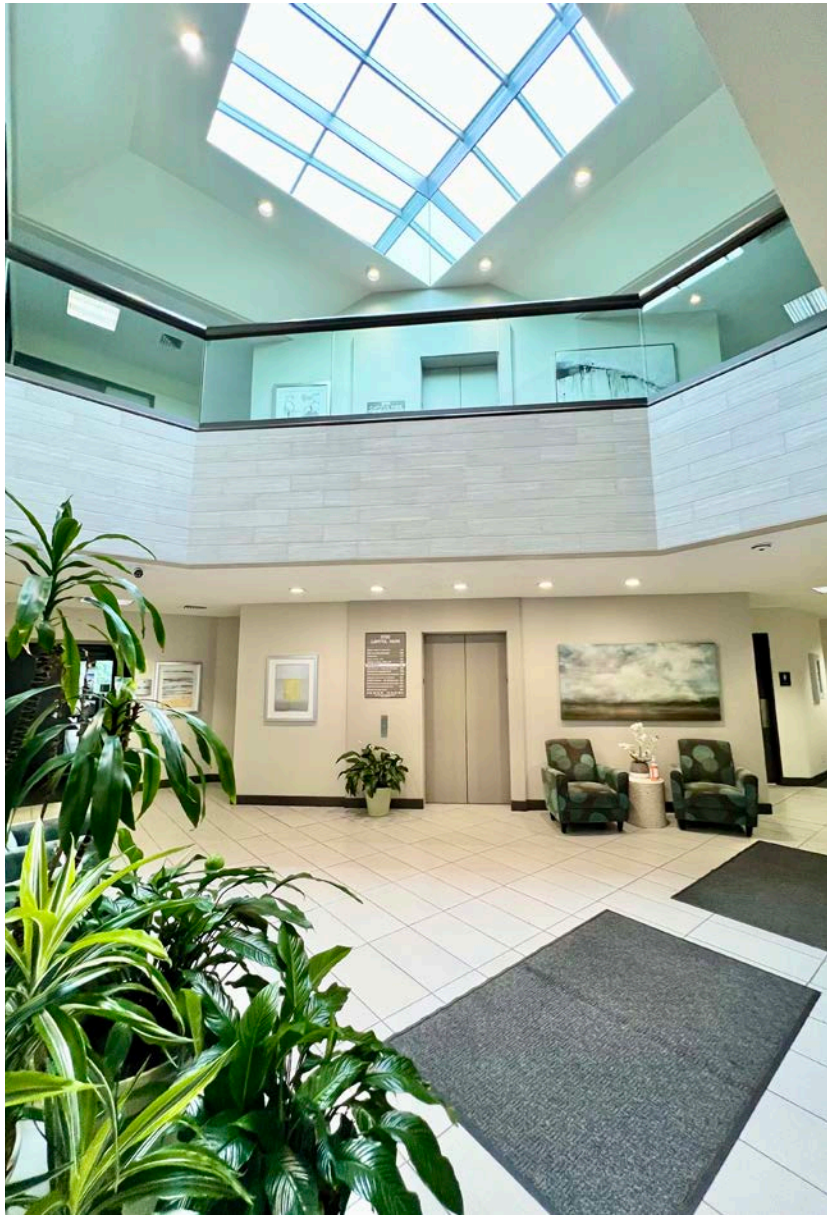
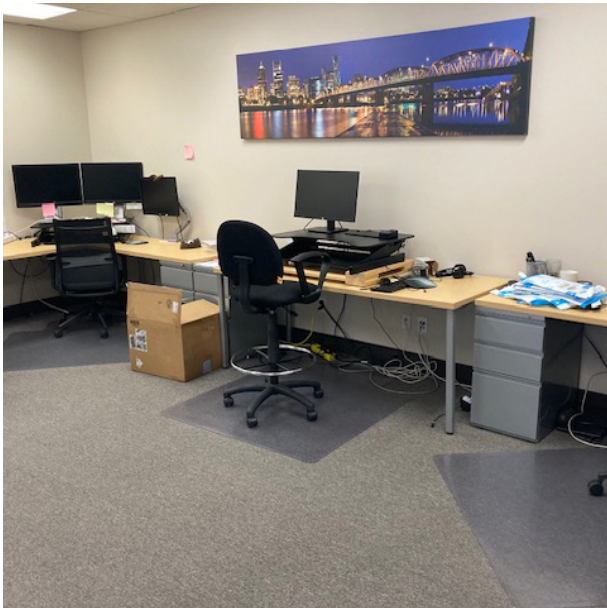
COLLABORATIVE WORKSPACE

CAPITOL PARK



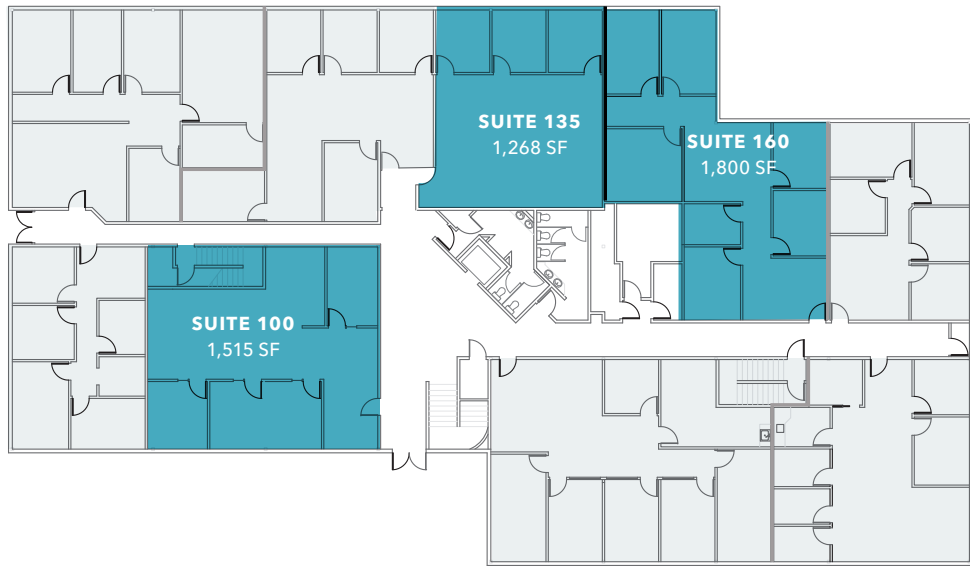
AVAILABLE FOR LEASE

KIDDER MATHEWS



AVAILABLE SUITES

FIRST FLOOR



1,515 SF

SUITE 100

1,268 SF

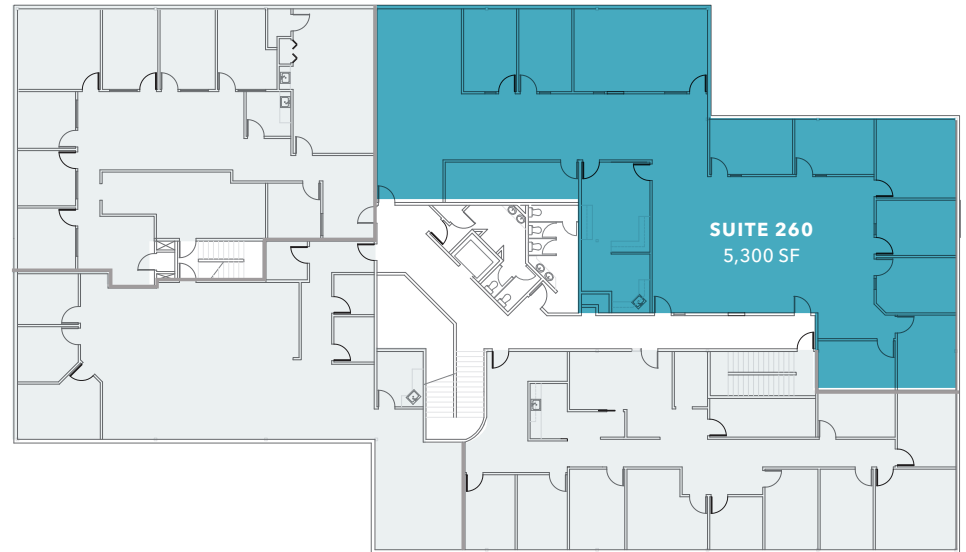
SUITE 135

1,800 SF

SUITE 160

*Suites can be combined for 3,068 SF

SECOND FLOOR



5,300 SF

SUITE 260 (AVAILABLE JULY 1, 2025)

CAPITOL PARK

PORTLAND GOLF CLUB

BEAVERTON

Garden Home

GABRIEL PARK

Multnomah Village

GARDEN HOME PARK

SMITH SCHOOL SPORTS FIELDS

WOODS MEMORIAL NATURAL AREA

FRENCH QUARTER FOOD CARTS

SUBJECT PROPERTY

SW BARBUR BLVD

CASCADE PLAZA

PORTLAND



99W

DICKINSON PARK & WOODS

JACKSON MIDDLE SCHOOL

WASHINGTON SQUARE MALL		

Metzger

MARKHAM ELEMENTARY SCHOOL

TIGARD

PORTLAND COMMUNITY COLLEGE SYLVANIA



CAPITOL PARK

Exclusively listed by

STEVE BOWERS

503.721.2715

steve.bowers@kidder.com

SEAN MCCARTHY

503.721.2712

sean.mccarthy@kidder.com

KIDDER.COM

This information supplied herein is from sources we deem reliable. It is provided without any representation, warranty, or guarantee, expressed or implied as to its accuracy. Prospective Buyer or Tenant should conduct an independent investigation and verification of all matters deemed to be material, including, but not limited to, statements of income and expenses. Consult your attorney, accountant, or other professional advisor.

km Kidder
Mathews