

EVAP Cooled Warehouse Available

savills

FOR SUBLEASE 5621 S 24th Street, Phoenix, AZ 85040



Space Profile

8,130 SF
TOTAL SF AVAILABLE

Withheld
ASKING LEASE RATE PER SF

90 Days
AVAILABILITY

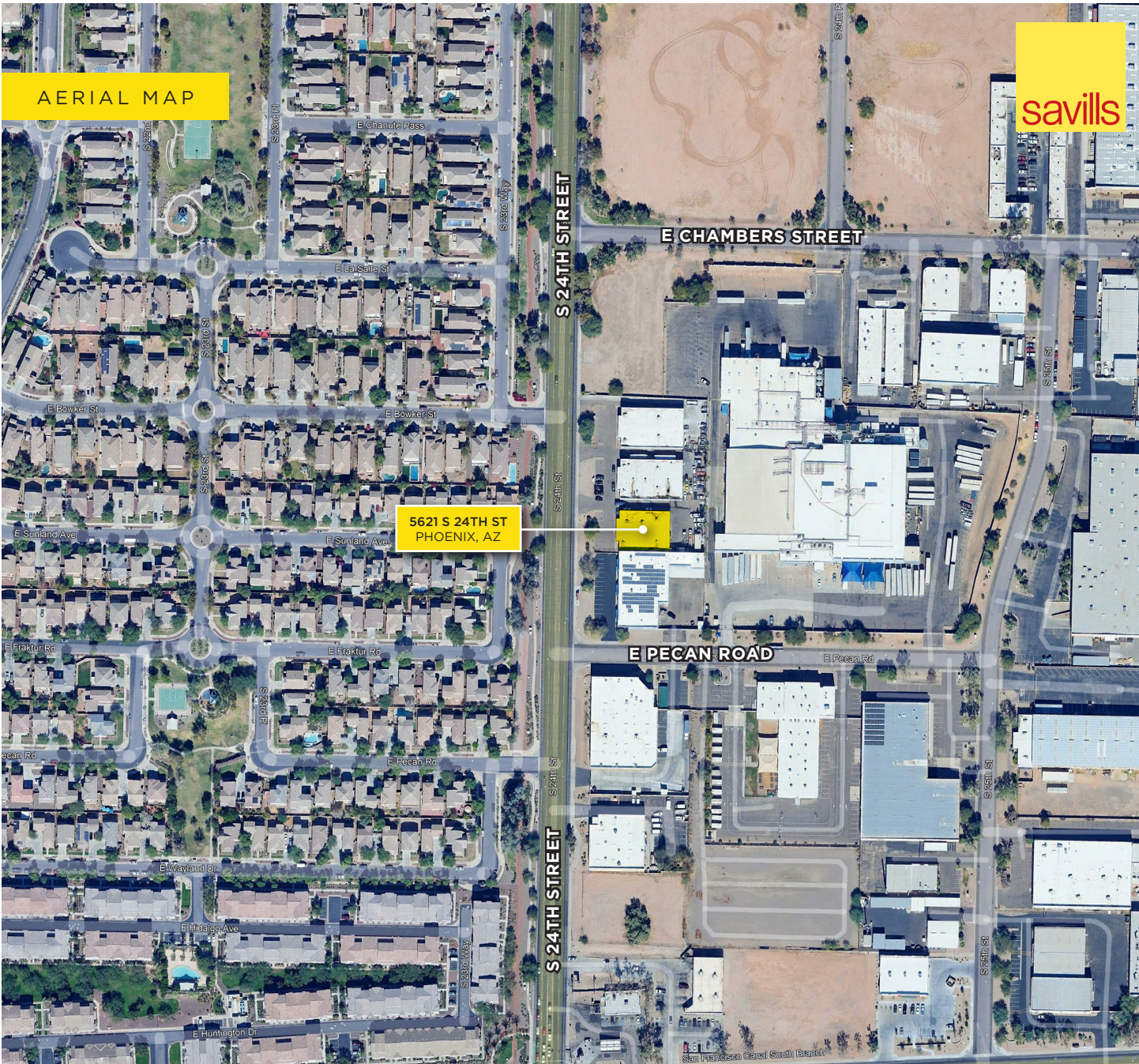
Thru 03/31/2027
TERM

0.98/1,000 SF
PARKING RATIO

KEY HIGHLIGHTS

- 8,130 SF warehouse with 3,000 SF of office space
- Secured yard
- 3 grade-level doors
- 400 amps/120-208 v 3p
- 15' clear height
- 26' building height
- Parking Ratio: 0.98/1,000 SF
- 8 parking spaces
- Please call to schedule tour

AERIAL MAP



5621 S 24TH ST
PHOENIX, AZ



RECEPTION AREA &
4 PRIVATE OFFICES



3 GRADE-LEVEL DOORS



POWER
400A/120 - 208V 3P



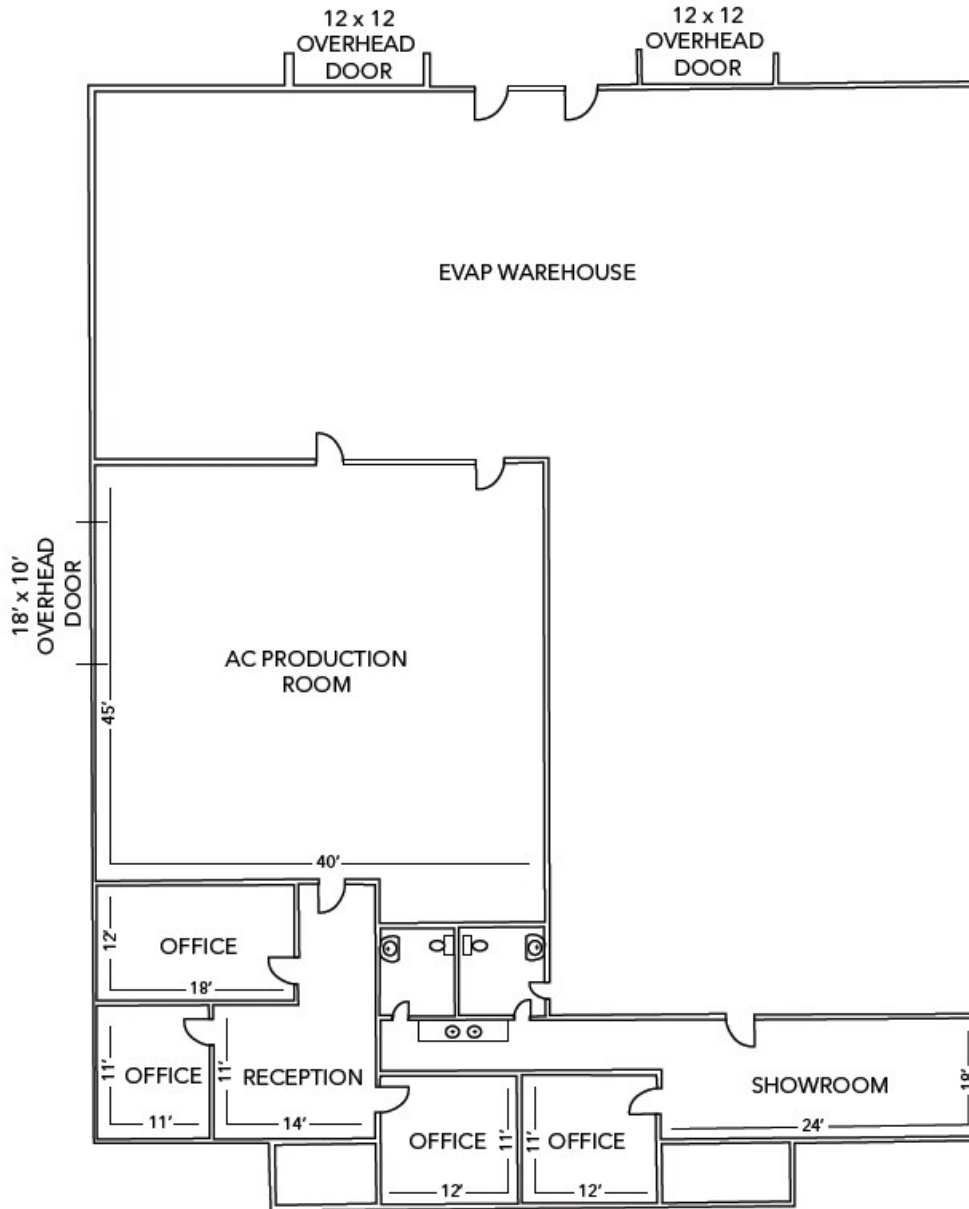
15' CLEAR HEIGHT



KITCHEN / BREAK ROOM



8 SURFACE SPACES



Dina Zavislak

Vice Chairman
+1 972 739 2204
dzavislak@savills.us

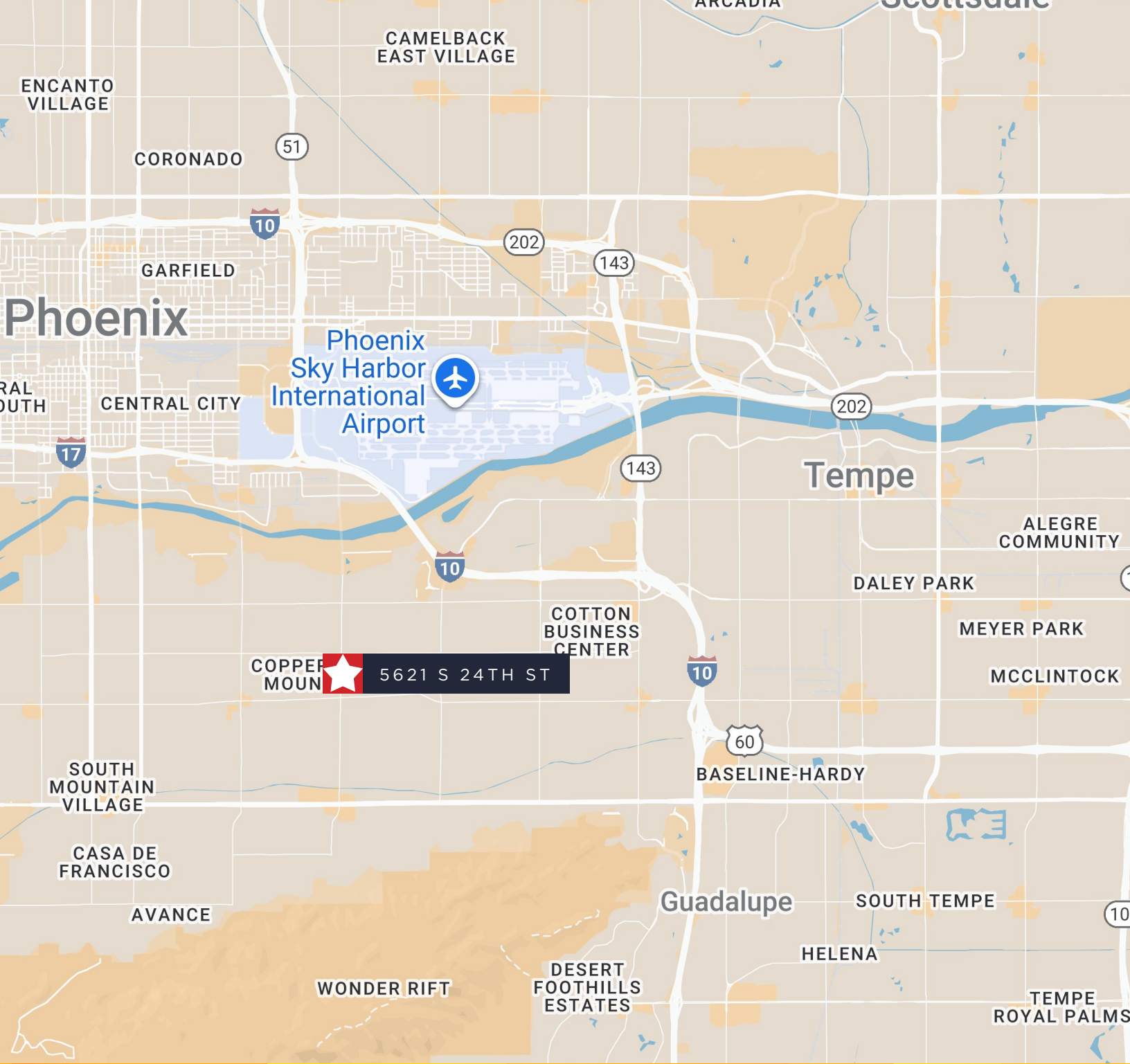
Brett Lessman


Executive Managing Director
+1 949 106 6940
blessman@savills.us

© 2025 Savills. All rights reserved. The information contained in this communication has been obtained from a variety of sources believed to be reliable but has not been verified. NO WARRANTY OR REPRESENTATION, EXPRESS OR IMPLIED, IS MADE AS TO THE CONDITION OF THE PROPERTY OR ACCURACY OR COMPLETENESS OF THE INFORMATION CONTAINED HEREIN AND SAME IS SUBMITTED SUBJECT TO ERRORS, OMISSIONS, CHANGE OF PRICE, RENTAL OR OTHER CONDITIONS, WITHDRAWAL WITHOUT NOTICE AND TO ANY SPECIFIC CONDITIONS IMPOSED BY THE PROPERTY OWNER OR LESSOR







COPPER MOUNT  5621 S 24TH ST



Dina Zavislak

Vice Chairman
+1 972 739 2204
dzavislak@savills.us

Brett Lessman

Executive Managing Director
+1 949 106 6940
blessman@savills.us