

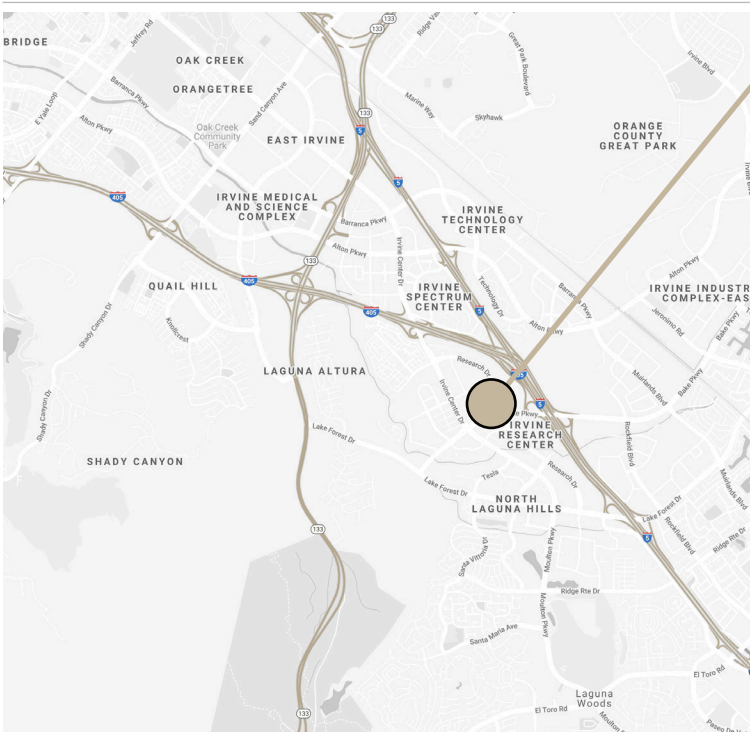
IRVINE

office space



8921 RESEARCH DRIVE > IRVINE

FOR LEASE > 1,350 SF



PROPERTY OVERVIEW

- > Monthly rent: \$1,500
- > This space is located in the heart of the Irvine Spectrum submarket.
- > Enjoy plenty of parking and having immediate access to top amenity destinations including the Irvine Spectrum Shopping Center and Los Olivos Marketplace, which feature over 250+ shopping and dining experiences
- > This office space offers great access to major freeways including the 5, 405 and 133 Toll Road. The building is located in a high-image business park, offering companies an opportunity to build their company brand and image



WINDWATER
REAL ESTATE

19762 MacArthur Blvd, Suite 130, Irvine CA 92612
949.231.5022 | windwater.com | team@windwater.com

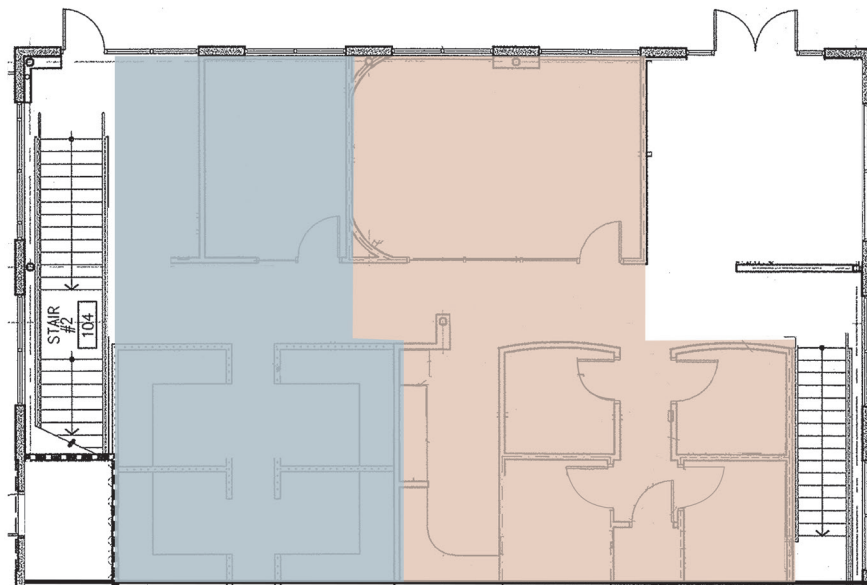
Lic. #01527367



YOUR SPACE



COMMON AREA



WINDWATER
REAL ESTATE

19762 MacArthur Blvd, Suite 130, Irvine CA 92612
949.231.5022 | windwater.com | team@windwater.com

Lic. #01527367