

For Sublease
Office Suite
Lease Rate: \$13.50/ sq. ft. NNN



Smith Development Sublease

6209 E. Silver Maple Circle Suite #102
Sioux Falls, SD 57110

Property Features

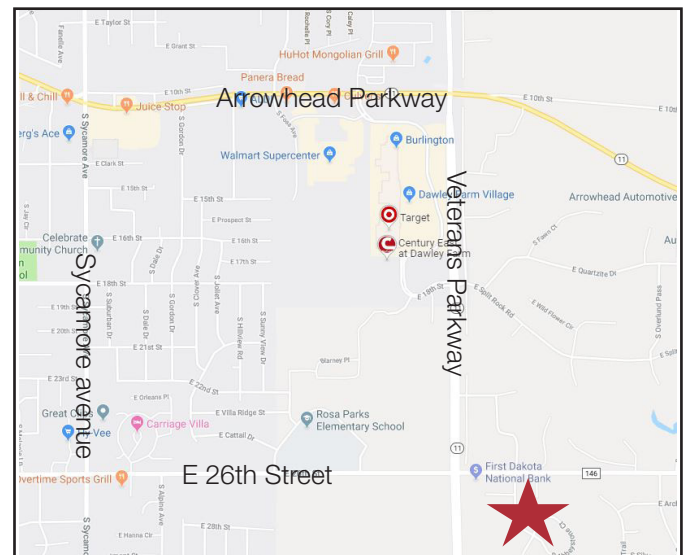
- Suite size: 1,500 sq. ft.
- 3 private offices
- Large conference room
- Nicely built-out space
- Sublease expires 8/31/2021

Pricing

- Lease rate: \$13.50/ sq. ft. NNN
- Estimated NNN expenses: \$2.50/ sq. ft.

Location

- Located on the southeast corner of E. 26th Street and Veterans Parkway
- Area neighbors include: Creative Steps Day Care, Auten Accounting Solutions, First Dakota National Bank, Dawley Farms



Dennis Breske, MBA, CCIM, SIOR

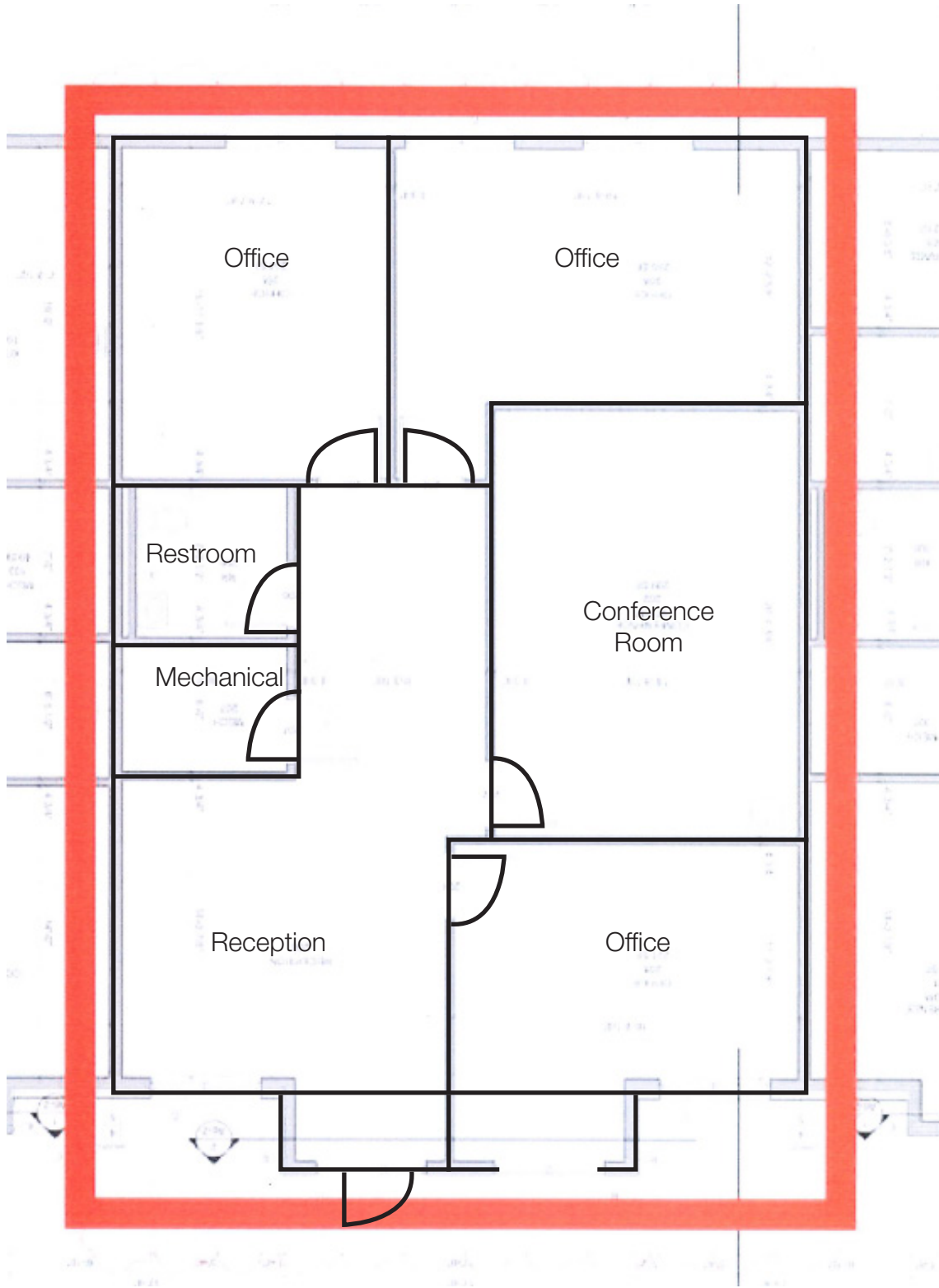
+1 605 444 7100 direct
+1 605 310 6666 mobile
dbreske@naisiouxfalls.com



Marcus Mahlen, CCIM

+1 605 444 7116 direct
+1 605 228 9744 mobile
mmahlen@naisiouxfalls.com

For Sublease
Office Suite



For Sublease
Office Suite



For Sublease
Office Suite

