



L. MASON CAPITANI

CORFAC INTERNATIONAL



FOR SALE OR LEASE

**2,373 SQUARE FEET
MADISON HEIGHTS, MICHIGAN**

PROPERTY FEATURES:

- Stand Alone Office/Medical Building
- Newer Construction
- Seconds from I-75 & I-696
- High Visibility Monument Signage
- Professional Ownership & Management

CONNECT WITH US:



facebook.com/L.MasonCapitaniInc.CORFACInternational
linkedin.com/company/l.-mason-capitani-inc.
twitter.com/LMasonCapitani

FOR MORE INFORMATION:

Aaron Smith
248.637.3515
asmith@Lmcap.com



248.637.9700 | www.Lmcap.com



CORFAC INTERNATIONAL

2301 West Big Beaver
Suite 950
Troy, MI 48084-3329

(248) 637-9700
Facsimile (248) 637-9897
www.Lmcap.com

PROPERTY INFORMATION



PROPERTY NAME: Madison Place

LOCATION: 515 E Eleven Mile Road

CITY: Madison Heights

COUNTY: Oakland

PROPERTY TYPE: Office

YEAR BUILT: 2001

LOCATION DESCRIPTION: E of John R

GROSS SF: 2,373

AVAILABLE SF: 2,373

MAX. AVAILABLE: 2,373

MIN. AVAILABLE: 2,373

FLOORS: 1

PARKING: 14

ZONING:

PROPERTY DESCRIPTION: Stand alone office/medical building. Newer construction. Seconds from I-75/I-696. High visibility monument signage. Professional ownership & management. In close proximity to Royal Oak.

ECONOMIC DATA

MIN RENTAL RATE: \$14.95

MAX RENTAL RATE: \$14.95

OPERATING EXPENSES:

ANNUAL ESCALATIONS: \$0.50

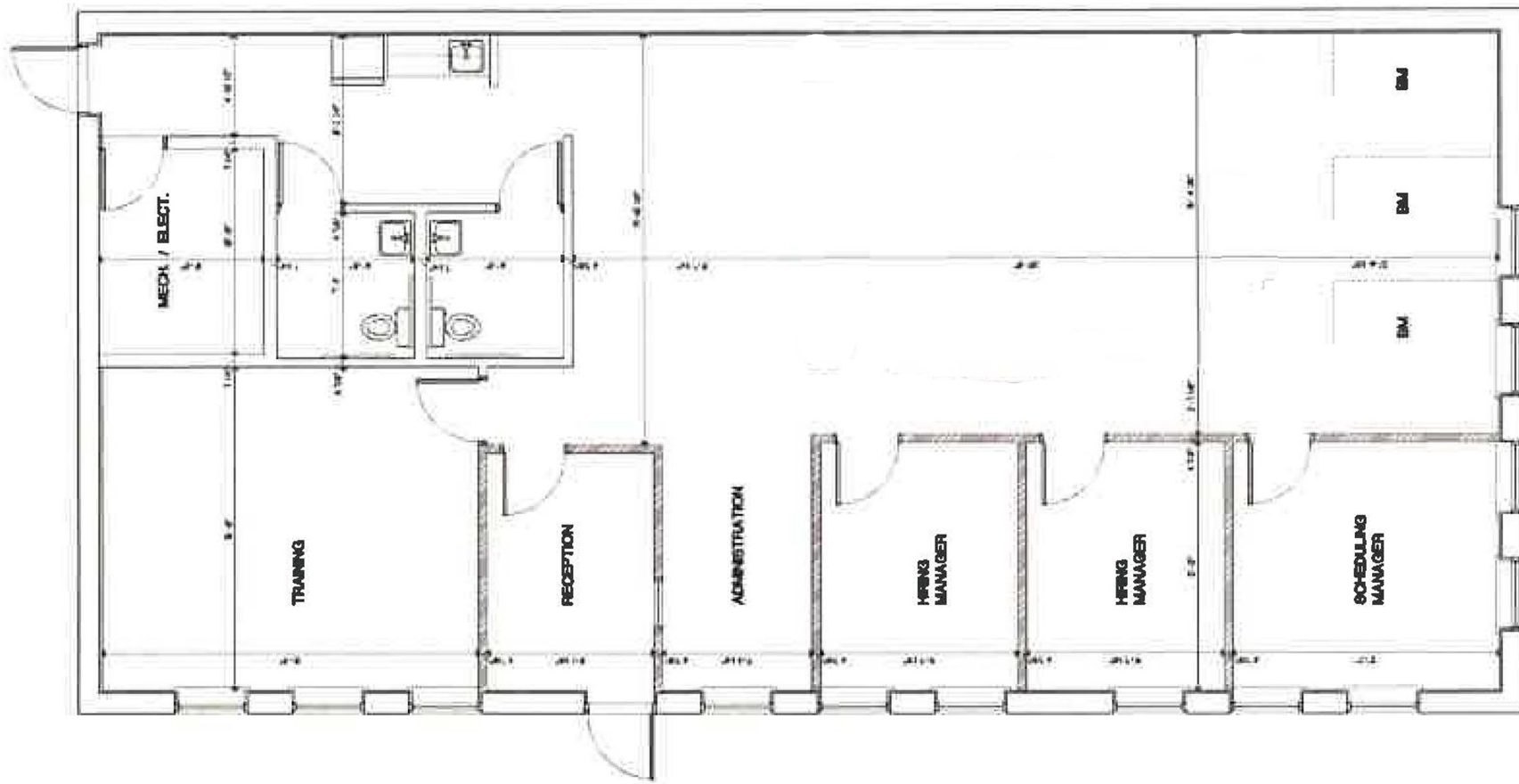
TERMS: +Utilities

LOAD FACTOR:

PARTITION ALLOWANCE: Negotiable

SALE PRICE: \$295,000.00

AGENT: A. Smith



L. MASON CAPITANI

CORFAC INTERNATIONAL
 2301 West Big Beaver Road, Suite 950
 Troy, Michigan 48084

www.Lmcap.com

For More Information, Contact:

Aaron Smith
 asmith@Lmcap.com
 248.637.3515

Floor Plan

515 E. Eleven Mile Road
 Madison Heights, MI

2,373 SQ FT

(Drawing Not to Scale)