

OFFICE PROPERTY // FOR LEASE

UP TO 2,900 SF IN DOWNTOWN NORTHVILLE GREAT LOFT SPACE!

114-118 E MAIN ST.
NORTHVILLE, MI 48167



- Beautiful historic building with exposed brick
- Second and third floor available 1,450 SF per floor
- Abundant natural light
- Building signage available



P.A. COMMERCIAL
Corporate & Investment Real Estate

26555 Evergreen Road, Suite 1500
Southfield, MI 48076
248.358.0100

pacommercial.com

EXECUTIVE SUMMARY



Lease Rate	\$21.00 SF/YR MODIFIED GROSS
-------------------	---

OFFERING SUMMARY

Building Size:	5,360 SF
Available SF:	1,450 - 2,900 SF
Year Built:	1870
Renovated:	2006
Zoning:	CBD
Market:	Detroit
Submarket:	Southern I-275 Corridor
Traffic Count:	7,851

PROPERTY OVERVIEW

Beautifully renovated building in the center of busy downtown Northville. This property features 1,450 SF of loft space on the 2nd and 3rd floors (2,900 SF total) that is ideally suited for a variety of office uses. The building can be entered from Main Street or from the rear of the building which is adjacent to the community parking deck.

LOCATION OVERVIEW

Located on the south side of E Main Street, just east of N Center St in Downtown Northville. Northville has a thriving business community with a blend of professional services, retail and cultural venues. Many residents can walk to downtown, which features specialty shops, theaters, restaurants, and personal services.

PROPERTY HIGHLIGHTS

- Beautiful historic building with exposed brick
- Second and third floor available 1,450 SF per floor
- Abundant natural light
- Building signage available

114-118 E MAIN ST. , NORTHVILLE, MI 48167 // FOR LEASE

ADDITIONAL PHOTOS



P.A. COMMERCIAL
Corporate & Investment Real Estate

Matthew J. Schiffman CEO/MANAGING MEMBER

D: 248.281.9907 | C: 248.943.6449

matt@pacommercial.com

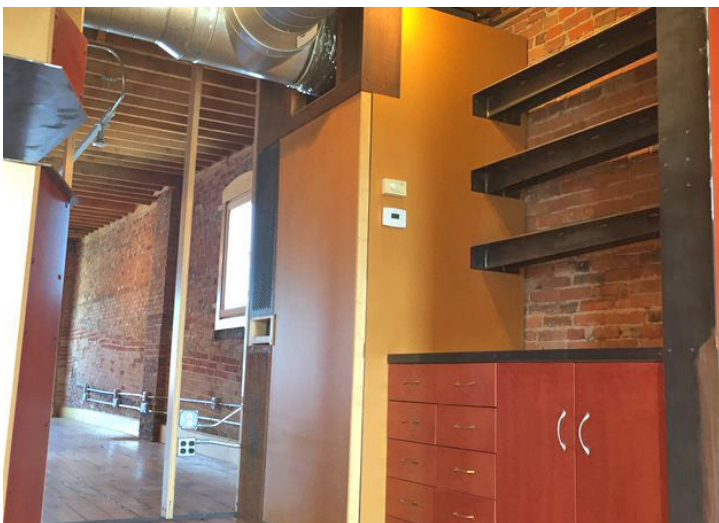
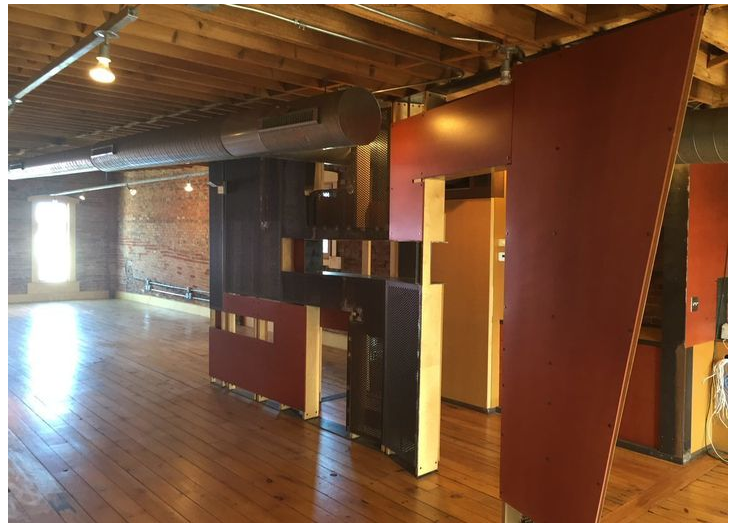
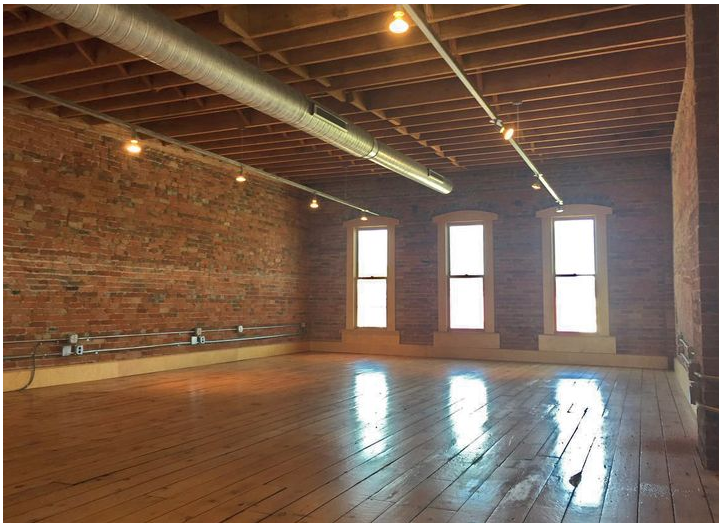
Mike Gunn SENIOR ASSOCIATE

D: 248.331.0202 | C: 248.924.7499

mike@pacommercial.com

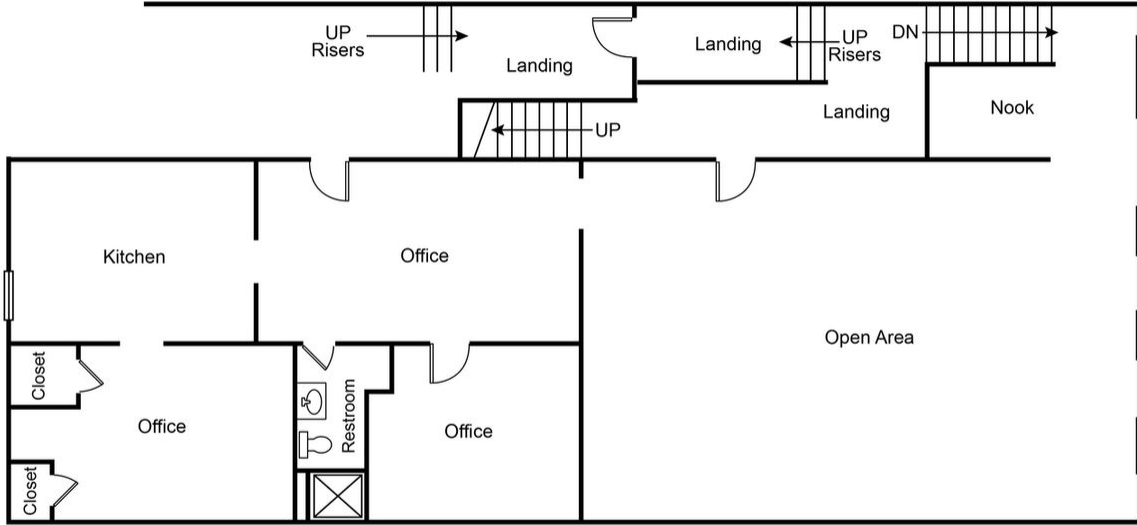
114-118 E MAIN ST. , NORTHVILLE, MI 48167 // FOR LEASE

ADDITIONAL PHOTOS

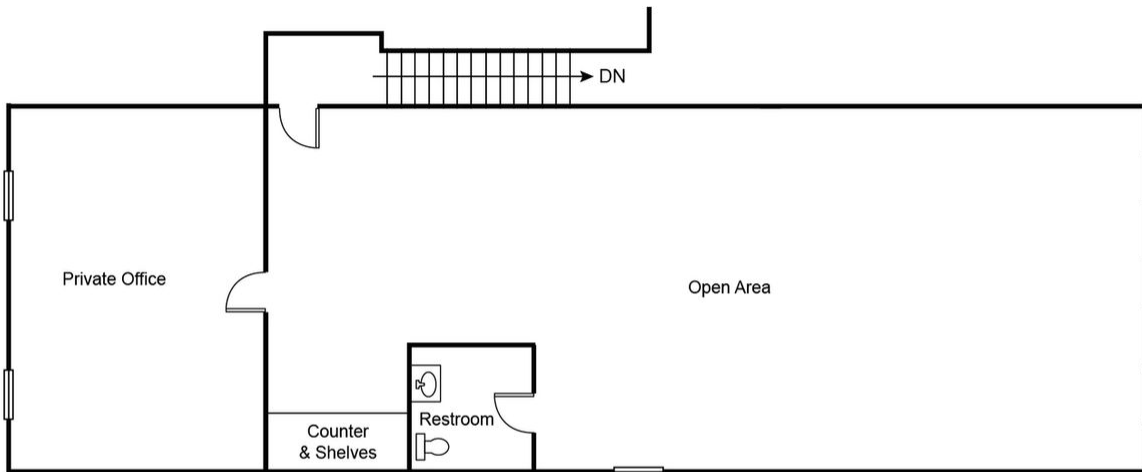


114-118 E MAIN ST. , NORTHVILLE, MI 48167 // FOR LEASE

FLOOR PLANS



SECOND STORY
1,450 SF



THIRD STORY
1,450 SF



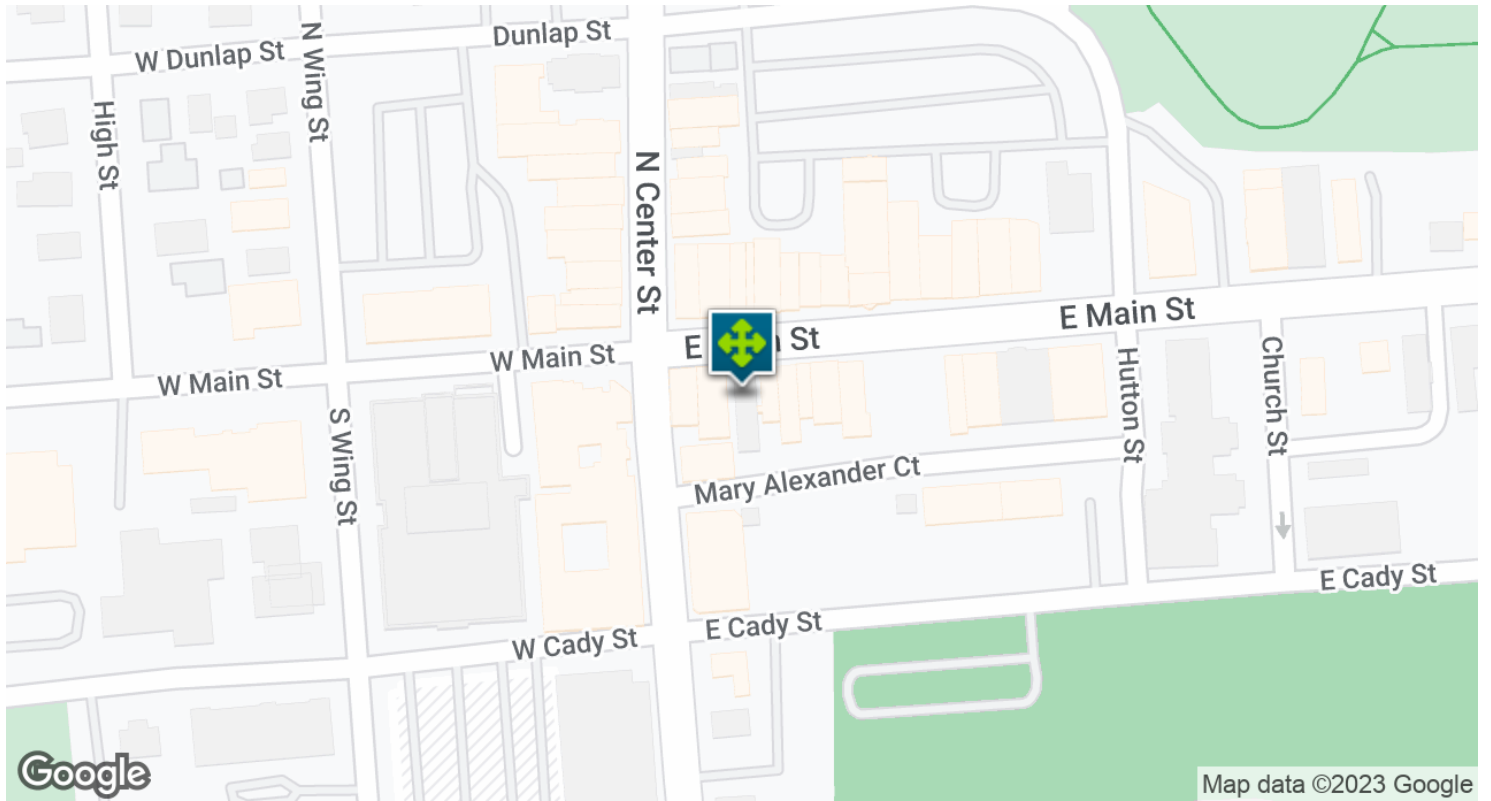
P.A. COMMERCIAL
Corporate & Investment Real Estate

Matthew J. Schiffman CEO/MANAGING MEMBER
D: 248.281.9907 | C: 248.943.6449
matt@pacommercial.com

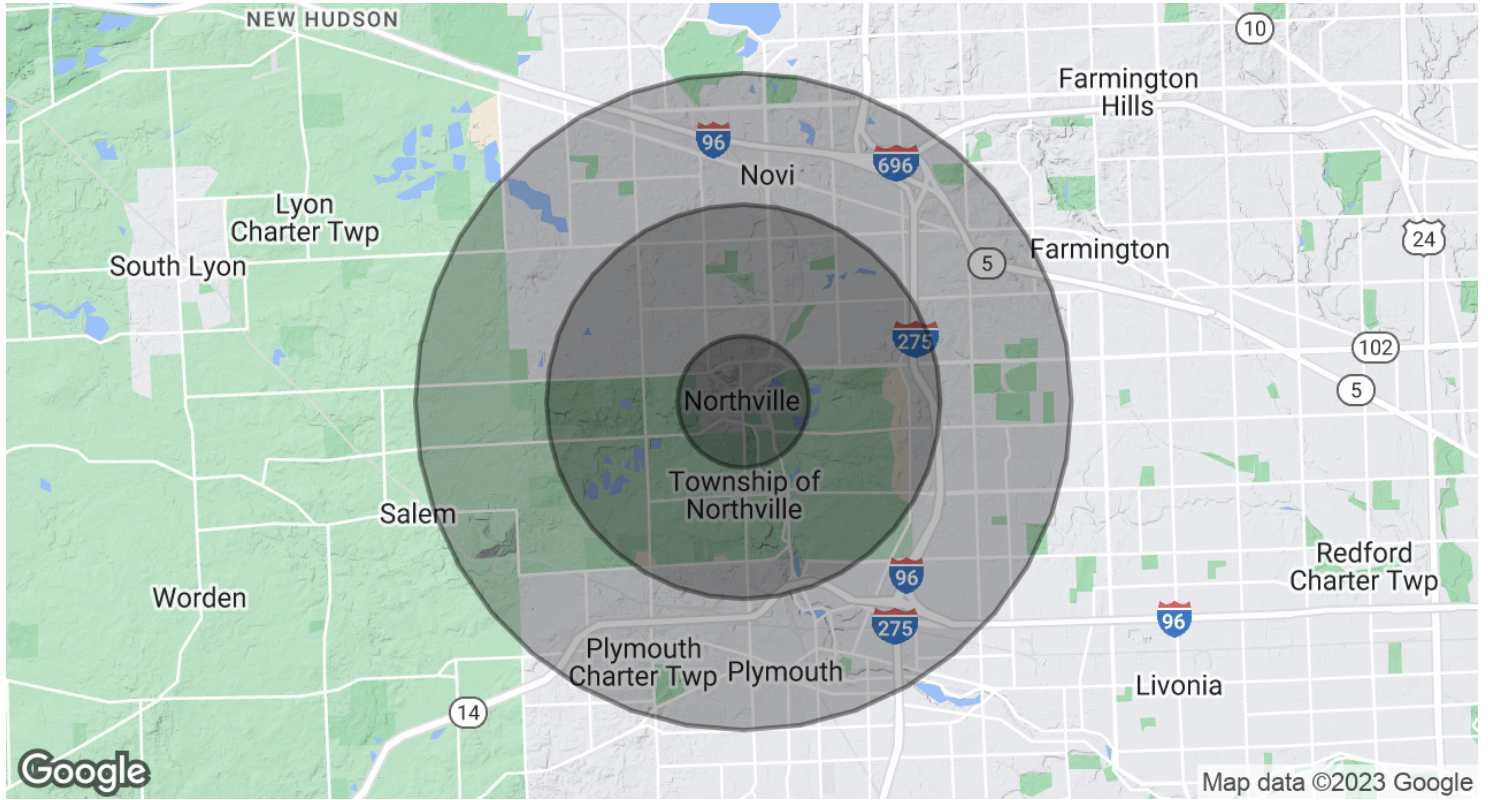
Mike Gunn SENIOR ASSOCIATE
D: 248.331.0202 | C: 248.924.7499
mike@pacommercial.com

114-118 E MAIN ST. , NORTHVILLE, MI 48167 // FOR LEASE

LOCATION MAP



DEMOGRAPHICS MAP & REPORT



POPULATION	1 MILE	3 MILES	5 MILES
Total Population	8,008	55,295	140,841
Average Age	44.3	41.5	41.3
Average Age (Male)	41.3	39.8	39.7
Average Age (Female)	46.1	43.0	42.7
HOUSEHOLDS & INCOME	1 MILE	3 MILES	5 MILES
Total Households	3,418	21,468	54,914
# of Persons per HH	2.3	2.6	2.6
Average HH Income	\$111,840	\$121,841	\$111,977
Average House Value	\$346,783	\$362,985	\$319,637

* Demographic data derived from 2020 ACS - US Census

114-118 E MAIN ST. , NORTHVILLE, MI 48167 // FOR LEASE

CONTACT US



FOR MORE INFORMATION, PLEASE CONTACT:



Matthew J. Schiffman
CEO/MANAGING MEMBER

D: 248.281.9907
C: 248.943.6449
matt@pacommercial.com



Mike Gunn
SENIOR ASSOCIATE

D: 248.331.0202
C: 248.924.7499
mike@pacommercial.com

P.A. Commercial

26555 Evergreen Road, Suite 1500
Southfield, MI 48076

P: 248.358.0100

F: 248.358.5300

pacommercial.com

Follow Us!



P.A. COMMERCIAL
Corporate & Investment Real Estate

Matthew J. Schiffman CEO/MANAGING MEMBER
D: 248.281.9907 | **C:** 248.943.6449
matt@pacommercial.com

Mike Gunn SENIOR ASSOCIATE
D: 248.331.0202 | **C:** 248.924.7499
mike@pacommercial.com