



THE  
POWELL GROUP  
The Experts in Real Estate & Business Brokerage

7202 Quaker Ave, Lubbock, Texas 79424

**M** Murphy  
BUSINESS SALES  
Excellence in Business Transactions



# Class A Showroom/Warehouse for Lease on Quaker Avenue



**PRESENTED BY:**

**Lease Rate: \$16.00 psf/yr.**

**DAVID POWELL, CCIM**

Commercial Broker  
Business Broker  
(806) 239-0804  
lubbockcommercial@gmail.com



THE  
POWELL GROUP  
The Experts in Real Estate & Business Brokerage

**KW Commercial | Lubbock  
The Powell Group**

10210 Quaker Avenue  
Lubbock, TX 79424

# Property Summary



## Property Summary

Lease Rate:	\$16.00
Total SF:	21,564 SF
Lease Type:	NNN
Zoning:	C2
Parking Spaces:	65

## Property Overview

Retail Showroom/Warehouse for Lease with over 230' of frontage on Quaker Avenue. This property has approximately 6,400 SF of warehouse space and over 15,000 SF of office and showroom space. There are 3 offices, a breakroom and 65 parking spaces. Please contact listing agent for additional information.

## Property Highlights

- Quaker Avenue Frontage
- Easy Access to Loop 289
- Surrounded by Established Businesses
- 12 x 12 Overhead Door



THE

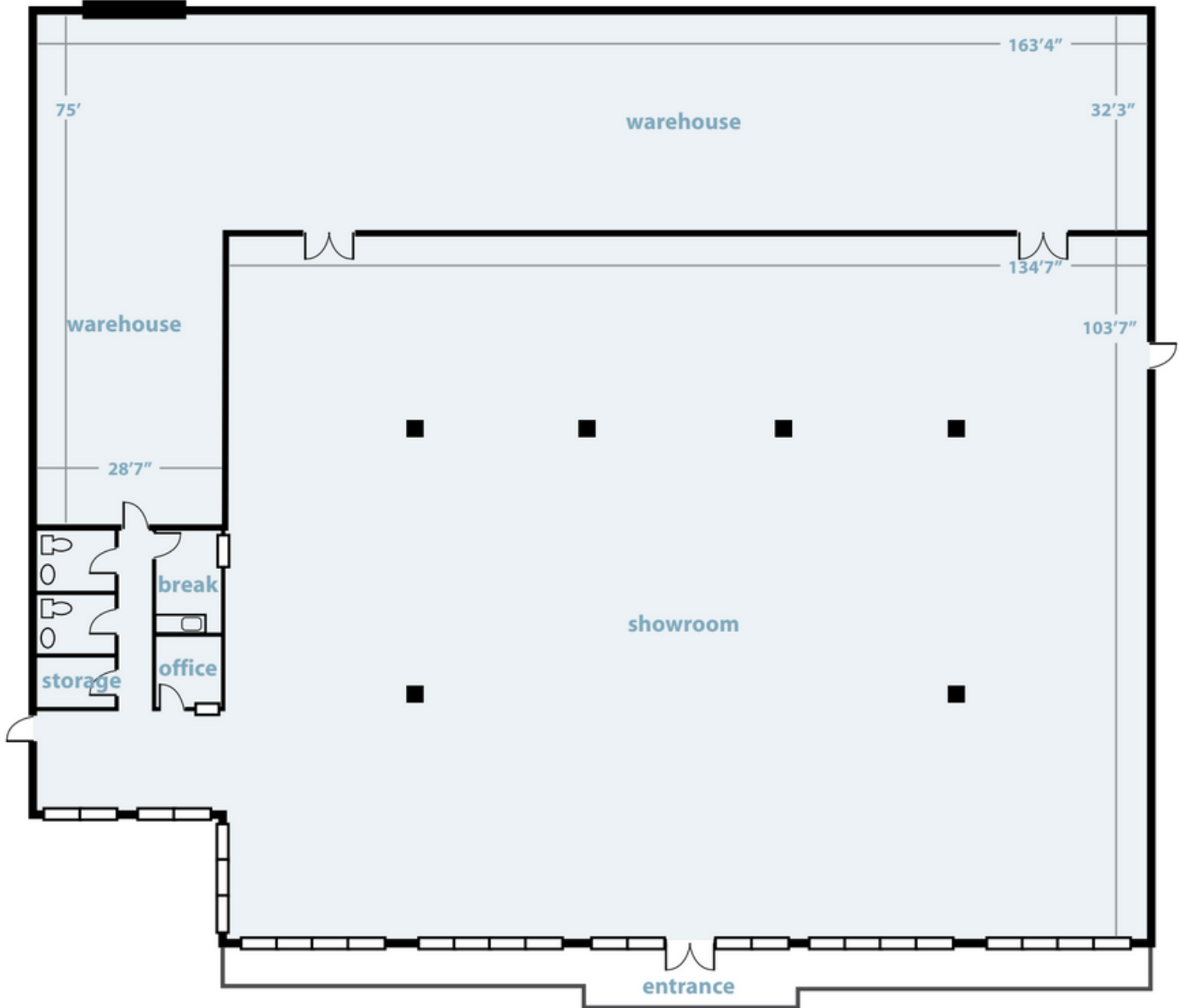
POWELL GROUP

The Experts in Real Estate & Business Brokerage

7202 Quaker Ave, Lubbock, Texas 79424

# Floor Plan

12'x12' overhead door



THE

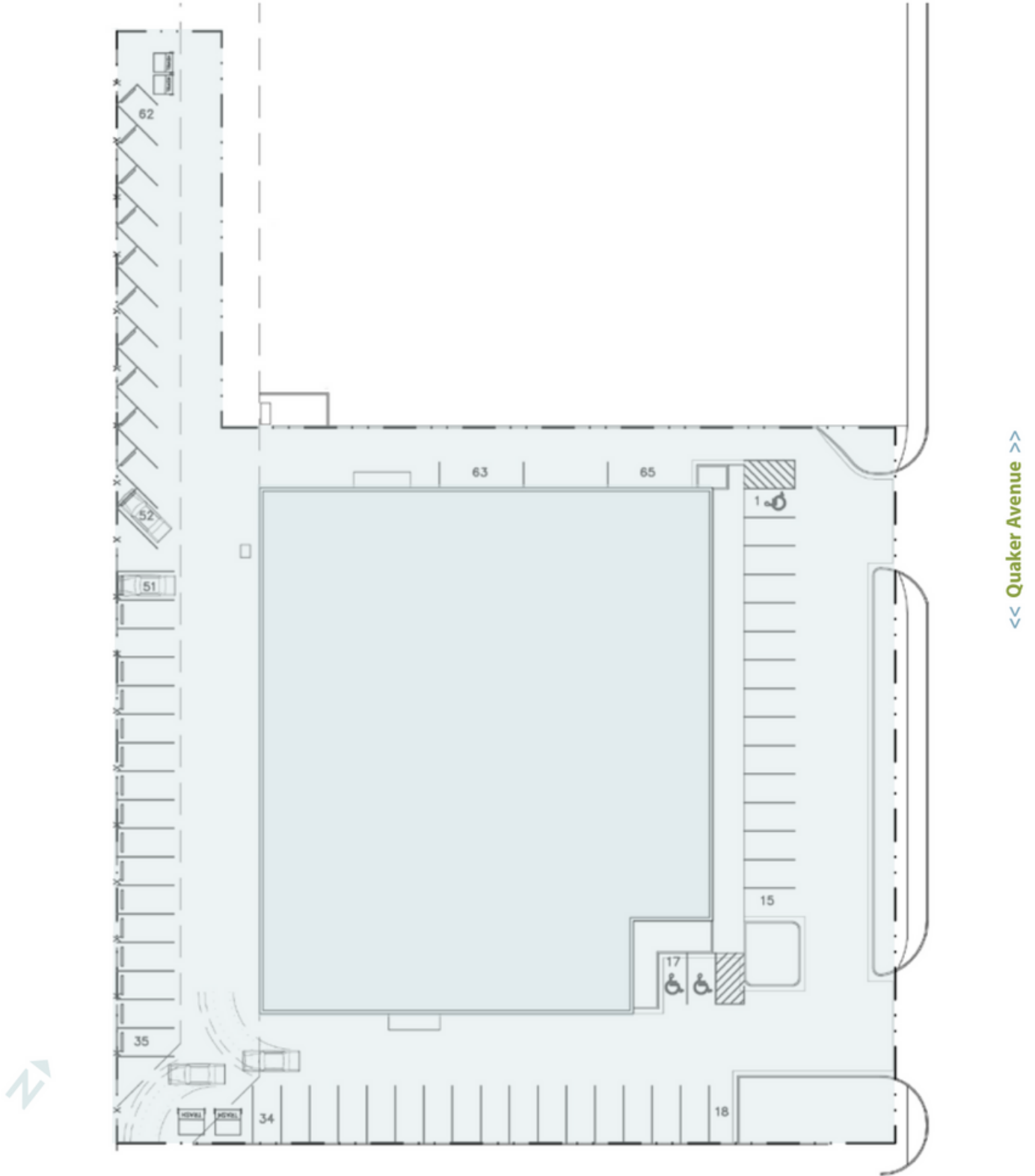
**POWELL GROUP**

*The Experts in Real Estate & Business Brokerage*

View more listings at [www.lubbockcommercialrealestate.com](http://www.lubbockcommercialrealestate.com)

7202 Quaker Ave, Lubbock, Texas 79424

# Site Plan



THE

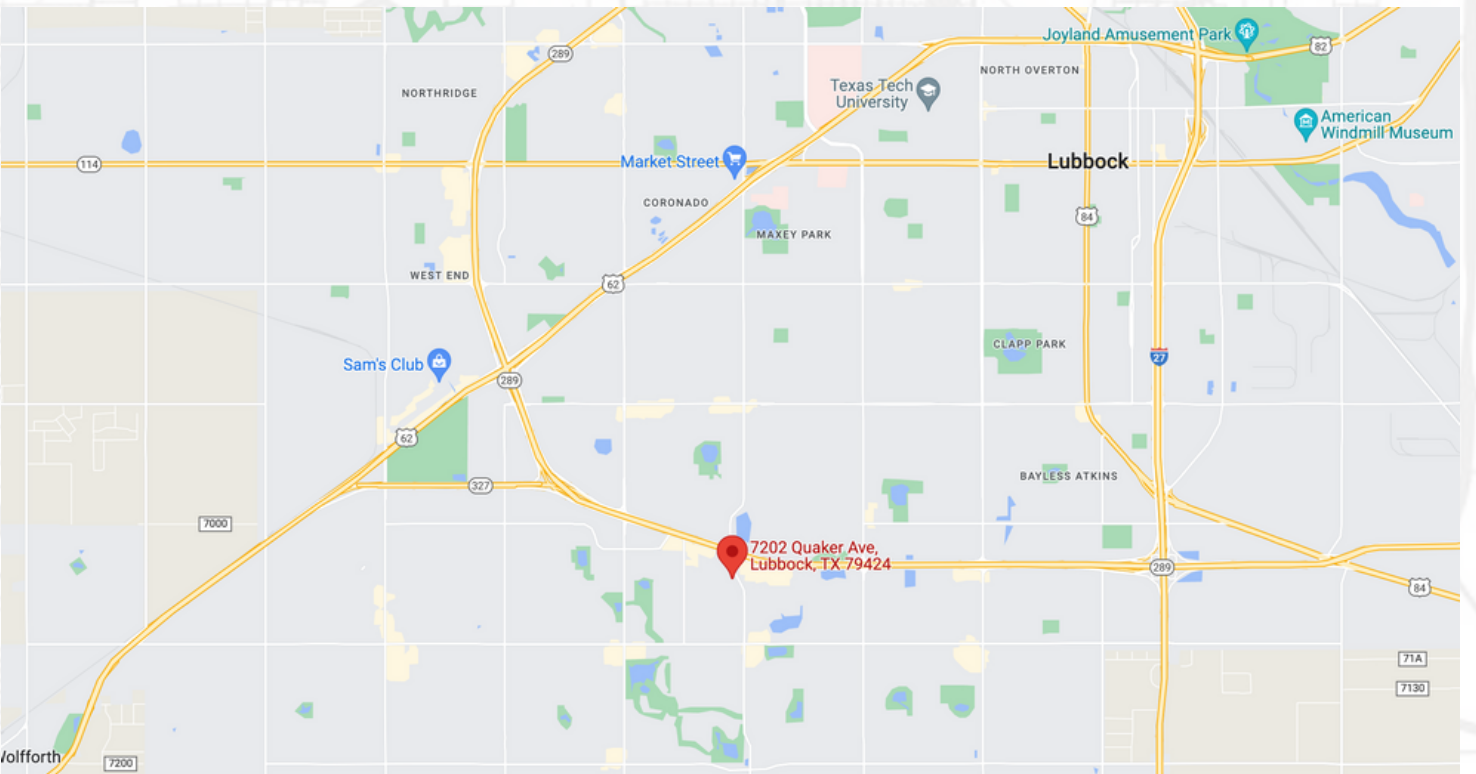
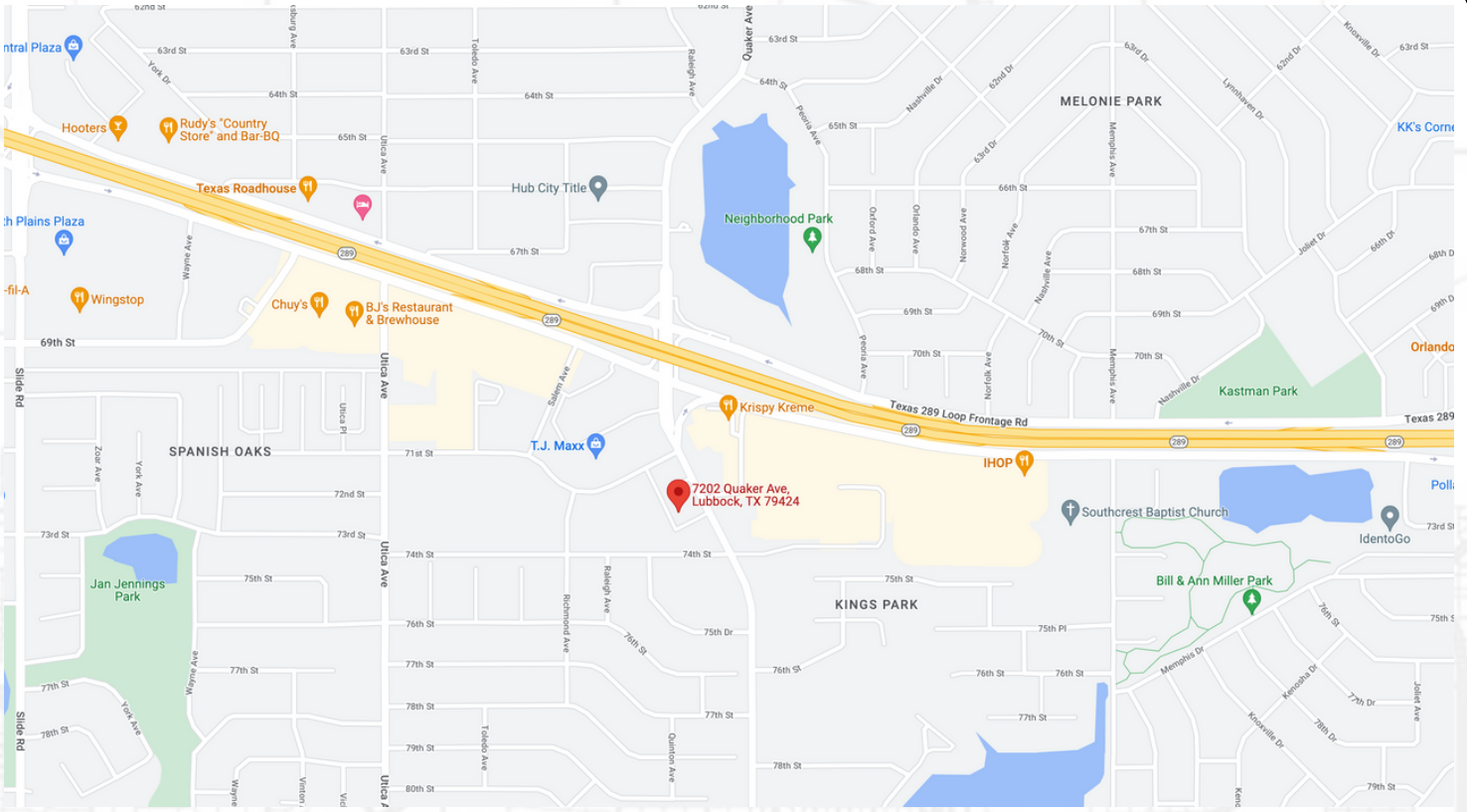
**POWELL GROUP**

*The Experts in Real Estate & Business Brokerage*

View more listings at [www.lubbockcommercialrealestate.com](http://www.lubbockcommercialrealestate.com)

7202 Quaker Ave, Lubbock, Texas 79424

# Additional Maps



THE  
POWELL GROUP

The Experts in Real Estate & Business Brokerage

View more listings at [www.lubbockcommercialrealestate.com](http://www.lubbockcommercialrealestate.com)