



For Lease



110 S. Edison Avenue / Tampa, FL 33606



Licensed Real Estate Brokers

Jeff Dervech, Leasing Representative

JDervech@DervechRE.com

813.766.9639



Beautiful

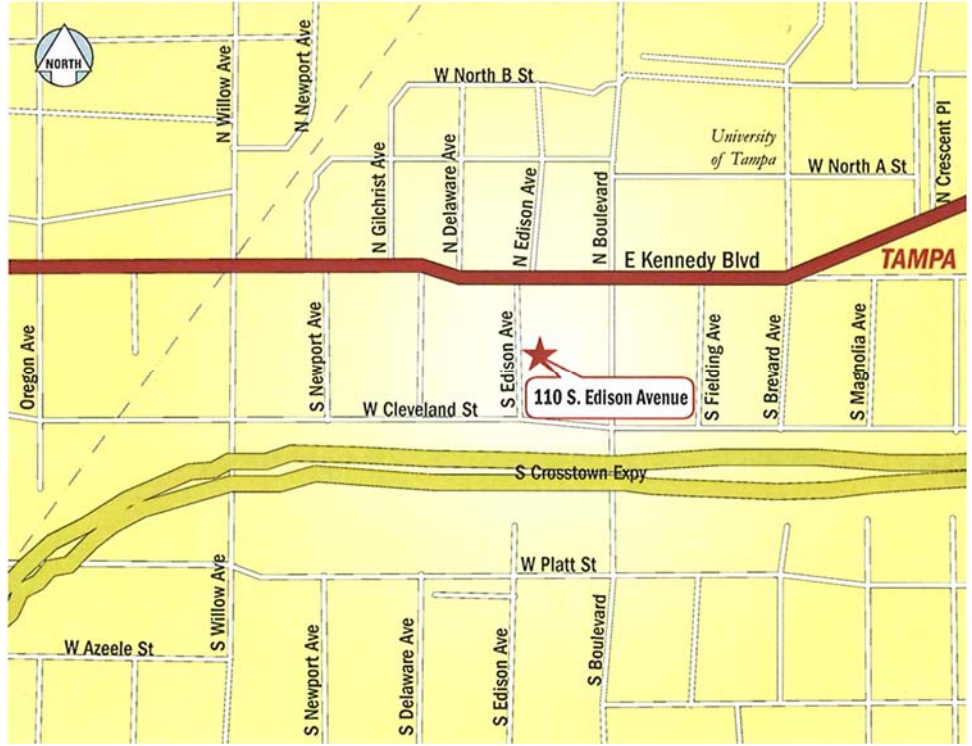
Victorian Two-Story Circa 1903

PROFESSIONAL OFFICE BUILDING IN
HISTORIC HYDE PARK DISTRICT

- Building Features:**
- 2,867 ± SF Available—Fully Renovated
 - Zoning: Professional Office Uses
 - Wired for Telephone and Cable
 - Hurricane Film on Windows
 - Minutes from Old Hyde Park and Downtown Tampa
 - Walking Distance to Restaurants
 - 8 Parking Spaces Off Alley (behind building) and Parking Available on Both Sides of Edison Avenue

No warranty or representation, expressed or implied, is made as to the accuracy of the information contained herein, and same is submitted subject to errors, omissions, change of price, rental or other conditions, withdrawal without notice, any special list conditions imposed by our Principals.

For Lease

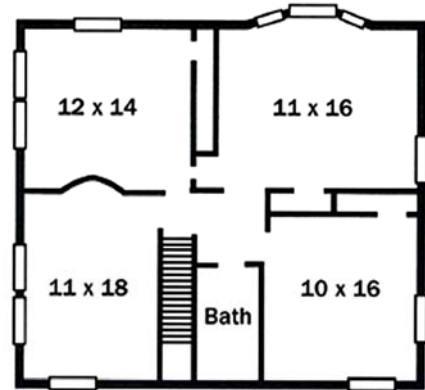
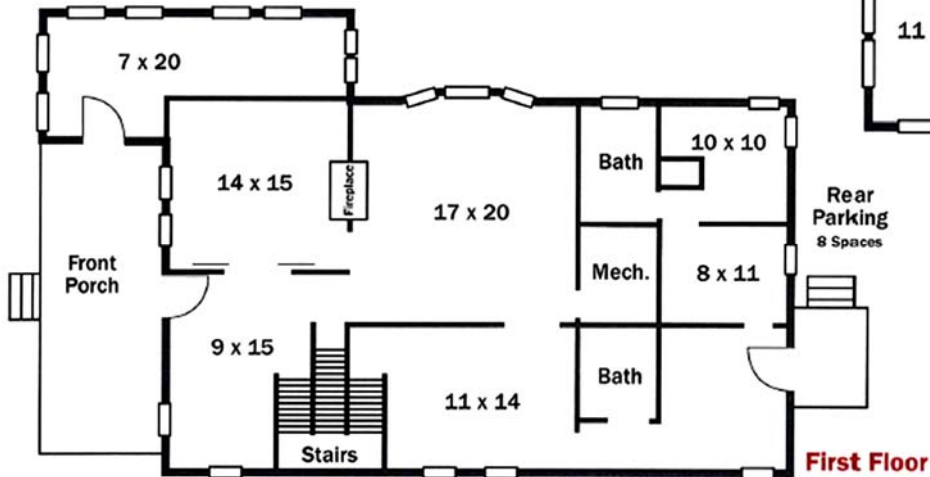


Licensed Real Estate Brokers

Jeff Dervech, Leasing Representative

JDervech@DervechRE.com

813.766.9639



Second Floor

First Floor

No warranty or representation, expressed or implied, is made as to the accuracy of the information contained herein, and same is submitted subject to errors, omissions, change of price, rental or other conditions, withdrawal without notice, any special list conditions imposed by our Principals.