

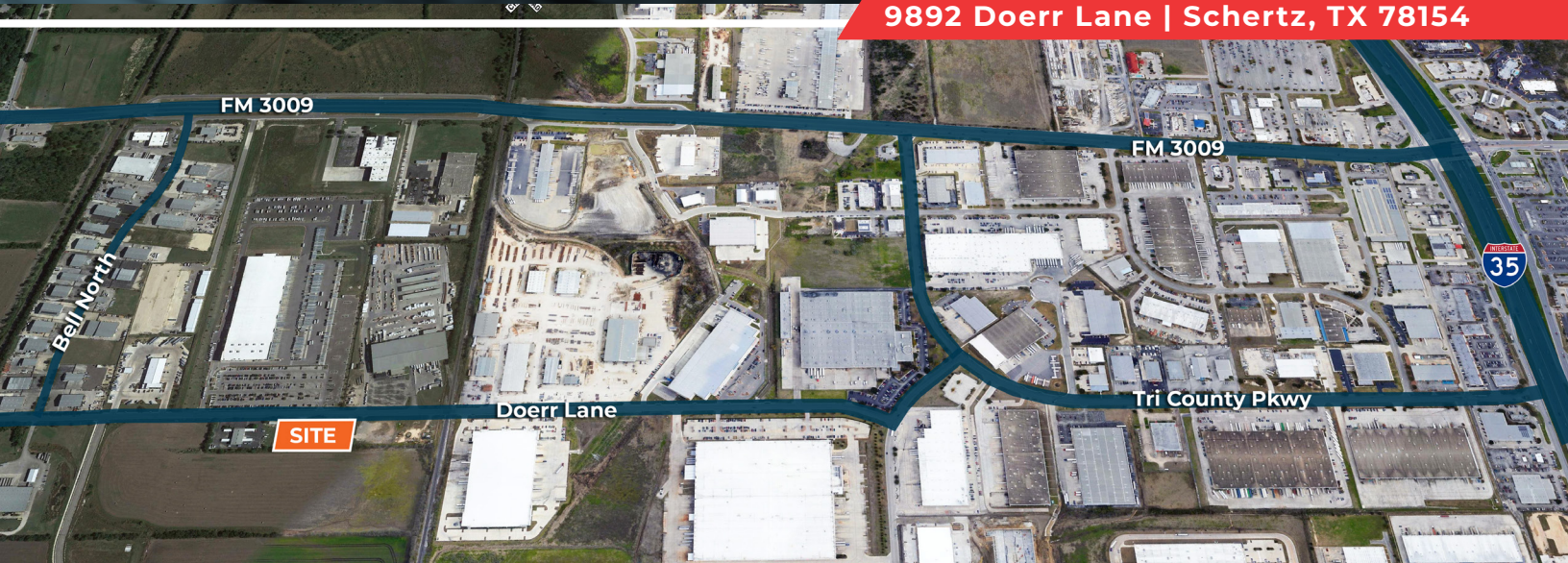
# FOR LEASE INDUSTRIAL STORAGE FACILITY

±2,780 SF on 1.9 Acres

# partners

PARTNERSREALSTATE.COM

9892 Doerr Lane | Schertz, TX 78154



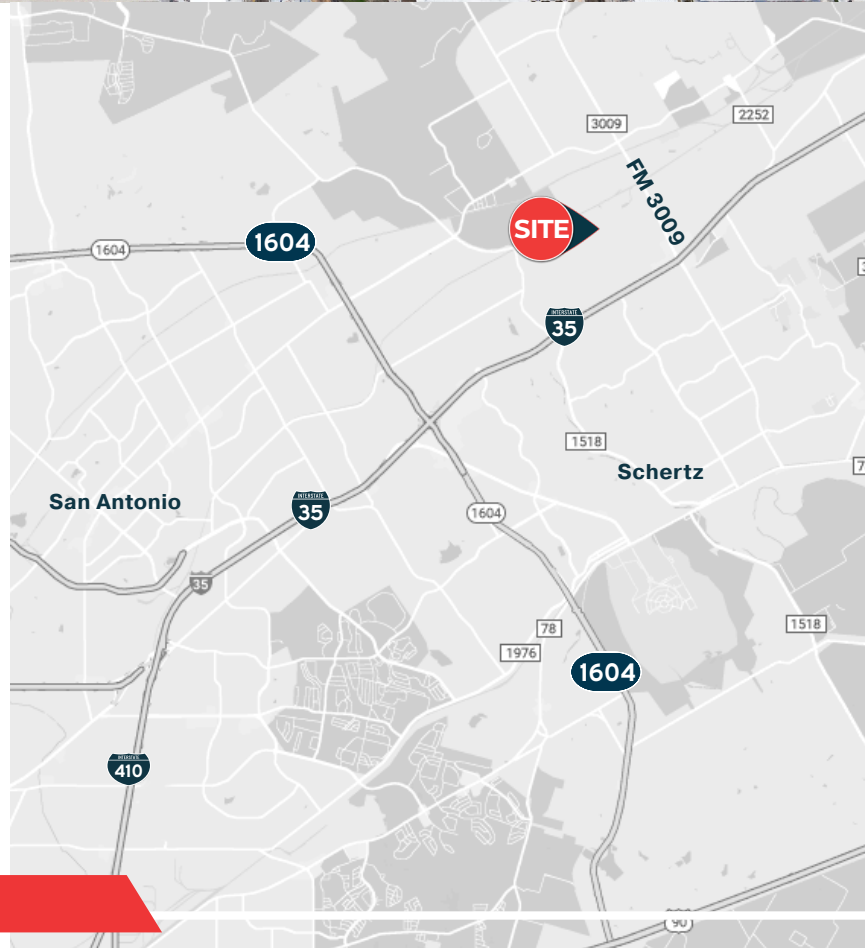
## PROPERTY HIGHLIGHTS

### PROPERTY SIZE:

- Building Size: ±2,780 SF
- Land: ±1.9 Acres Stabilized Yard

### PROPERTY FEATURES:

- Fully Fenced Perimeter with two entry points
- M-1 Zoning (Manufacturing - Light)
- Strategically positioned in the Schertz Submarket, providing easy access to IH-35, Loop 1604, and IH-10
- Exit 175 from IH-35 to FM 3009, and multiple points of access from Lookout Road, Schertz Parkway, Tri County Parkway & Bell North



**LEASE RATE:** Contact Broker

**CARLOS MARQUEZ, SIOR**

PARTNER

Industrial Brokerage Services

tel 210 896 2525

carlos.marquez@partnersrealestate.com

**CALEB HORTON**

ASSOCIATE

Industrial Brokerage Services

tel 210 833 3050

caleb.horton@partnersrealestate.com

1020 NE Interstate 410 Loop, Suite 810

San Antonio, TX 78209

210 446 3655

[www.partnersrealestate.com](http://www.partnersrealestate.com)

# FOR LEASE INDUSTRIAL STORAGE FACILITY

±2,780 SF on 1.9 Acres

# partners

PARTNERSREALSTATE.COM



**CARLOS MARQUEZ, SIOR**  
PARTNER  
Industrial Brokerage Services  
tel 210 896 2525  
carlos.marquez@partnersrealstate.com

**CALEB HORTON**  
ASSOCIATE  
Industrial Brokerage Services  
tel 210 833 3050  
caleb.horton@partnersrealstate.com

1020 NE Interstate 410 Loop, Suite 810  
San Antonio, TX 78209  
210 446 3655  
[www.partnersrealstate.com](http://www.partnersrealstate.com)

# FOR LEASE INDUSTRIAL STORAGE FACILITY

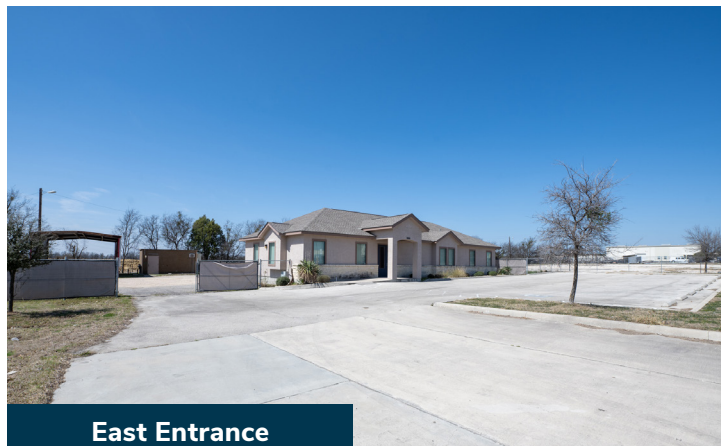
±2,780 SF on 1.9 Acres

# partners

PARTNERSREALSTATE.COM



Office Space



East Entrance



Concrete Apron



West Entrance



Facing West



Facing East

**CARLOS MARQUEZ, SIOR**

PARTNER

Industrial Brokerage Services

tel 210 896 2525

carlos.marquez@partnersrealestate.com

**CALEB HORTON**

ASSOCIATE

Industrial Brokerage Services

tel 210 833 3050

caleb.horton@partnersrealestate.com

1020 NE Interstate 410 Loop, Suite 810

San Antonio, TX 78209

210 446 3655

[www.partnersrealestate.com](http://www.partnersrealestate.com)

# FOR LEASE INDUSTRIAL STORAGE FACILITY

±2,780 SF on 1.9 Acres

# partners

PARTNERSREALSTATE.COM



Reception Area



Breakroom



Hallway



Private Office

## CARLOS MARQUEZ, SIOR

PARTNER  
Industrial Brokerage Services  
tel 210 896 2525  
carlos.marquez@partnersrealestate.com

## CALEB HORTON

ASSOCIATE  
Industrial Brokerage Services  
tel 210 833 3050  
caleb.horton@partnersrealestate.com

1020 NE Interstate 410 Loop, Suite 810  
San Antonio, TX 78209  
210 446 3655

[www.partnersrealestate.com](http://www.partnersrealestate.com)



# Information About Brokerage Services

Texas law requires all real estate license holders to give the following information about brokerage services to prospective buyers, tenants, sellers and landlords.

11-2-2015



## TYPES OF REAL ESTATE LICENSE HOLDERS:

- **A BROKER** is responsible for all brokerage activities, including acts performed by sales agents sponsored by the broker.
- **A SALES AGENT** must be sponsored by a broker and works with clients on behalf of the broker.

## A BROKER'S MINIMUM DUTIES REQUIRED BY LAW (A client is the person or party that the broker represents):

- Put the interests of the client above all others, including the broker's own interests;
- Inform the client of any material information about the property or transaction received by the broker;
- Answer the client's questions and present any offer to or counter-offer from the client; and
- Treat all parties to a real estate transaction honestly and fairly.

## A LICENSE HOLDER CAN REPRESENT A PARTY IN A REAL ESTATE TRANSACTION:

**AS AGENT FOR OWNER (SELLER/LANDLORD):** The broker becomes the property owner's agent through an agreement with the owner, usually in a written listing to sell or property management agreement. An owner's agent must perform the broker's minimum duties above and must inform the owner of any material information about the property or transaction known by the agent, including information disclosed to the agent or subagent by the buyer or buyer's agent.

**AS AGENT FOR BUYER/TENANT:** The broker becomes the buyer/tenant's agent by agreeing to represent the buyer, usually through a written representation agreement. A buyer's agent must perform the broker's minimum duties above and must inform the buyer of any material information about the property or transaction known by the agent, including information disclosed to the agent by the seller or seller's agent.

**AS AGENT FOR BOTH - INTERMEDIARY:** To act as an intermediary between the parties the broker must first obtain the written agreement of *each party* to the transaction. The written agreement must state who will pay the broker and, in conspicuous bold or underlined print, set forth the broker's obligations as an intermediary. A broker who acts as an intermediary:

- Must treat all parties to the transaction impartially and fairly;
- May, with the parties' written consent, appoint a different license holder associated with the broker to each party (owner and buyer) to communicate with, provide opinions and advice to, and carry out the instructions of each party to the transaction.
- Must not, unless specifically authorized in writing to do so by the party, disclose:
  - o that the owner will accept a price less than the written asking price;
  - o that the buyer/tenant will pay a price greater than the price submitted in a written offer; and
  - o any confidential information or any other information that a party specifically instructs the broker in writing not to disclose, unless required to do so by law.

**AS SUBAGENT:** A license holder acts as a subagent when aiding a buyer in a transaction without an agreement to represent the buyer. A subagent can assist the buyer but does not represent the buyer and must place the interests of the owner first.

## TO AVOID DISPUTES, ALL AGREEMENTS BETWEEN YOU AND A BROKER SHOULD BE IN WRITING AND CLEARLY ESTABLISH:

- The broker's duties and responsibilities to you, and your obligations under the representation agreement.
- Who will pay the broker for services provided to you, when payment will be made and how the payment will be calculated.

**LICENSE HOLDER CONTACT INFORMATION:** This notice is being provided for information purposes. It does not create an obligation for you to use the broker's services. Please acknowledge receipt of this notice below and retain a copy for your records.

PCR Brokerage San Antonio, LLC dba Partners	9003952	licensing@partnersrealestate.com	713-629-0500
Licensed Broker /Broker Firm Name or Primary Assumed Business Name	License No.	Email	Phone
Jon Silberman	389162	jon.silberman@partnersrealestate.com	713-985-4626
Designated Broker of Firm	License No.	Email	Phone
Gary Hebert	730341	gary.hebert@partnersrealestate.com	512-580-6025
Licensed Supervisor of Sales Agent/ Associate	License No.	Email	Phone
Carlos Marquez	521174	carlos.marquez@partnersrealestate.com	(210) 892-1413
Sales Agent/Associate's Name	License No.	Email	Phone

Buyer/Tenant/Seller/Landlord Initials

Date